

DISTANCES FROM SIDE STAKES FOR CROSS-SECTIONING  
SLOPE 1 TO 1. ROADWAY OF ANY WIDTH

	0	.1	.2	.3	.4	.5	.6	.7	.8	.9	
0	0.00	0.10	0.20	0.30	0.40	0.50	0.60	0.70	0.80	0.90	0
1	1.00	1.10	1.20	1.30	1.40	1.50	1.60	1.70	1.80	1.90	1
2	2.00	2.10	2.20	2.30	2.40	2.50	2.60	2.70	2.80	2.90	2
3	3.00	3.10	3.20	3.30	3.40	3.50	3.60	3.70	3.80	3.90	3
4	4.00	4.10	4.20	4.30	4.40	4.50	4.60	4.70	4.80	4.90	4
5	5.00	5.10	5.20	5.30	5.40	5.50	5.60	5.70	5.80	5.90	5
6	6.00	6.10	6.20	6.30	6.40	6.50	6.60	6.70	6.80	6.90	6
7	7.00	7.10	7.20	7.30	7.40	7.50	7.60	7.70	7.80	7.90	7
8	8.00	8.10	8.20	8.30	8.40	8.50	8.60	8.70	8.80	8.90	8
9	9.00	9.10	9.20	9.30	9.40	9.50	9.60	9.70	9.80	9.90	9
10	10.00	10.10	10.20	10.30	10.40	10.50	10.60	10.70	10.80	10.90	10
11	11.00	11.10	11.20	11.30	11.40	11.50	11.60	11.70	11.80	11.90	11
12	12.00	12.10	12.20	12.30	12.40	12.50	12.60	12.70	12.80	12.90	12
13	13.00	13.10	13.20	13.30	13.40	13.50	13.60	13.70	13.80	13.90	13
14	14.00	14.10	14.20	14.30	14.40	14.50	14.60	14.70	14.80	14.90	14
15	15.00	15.10	15.20	15.30	15.40	15.50	15.60	15.70	15.80	15.90	15
16	16.00	16.10	16.20	16.30	16.40	16.50	16.60	16.70	16.80	16.90	16
17	17.00	17.10	17.20	17.30	17.40	17.50	17.60	17.70	17.80	17.90	17
18	18.00	18.10	18.20	18.30	18.40	18.50	18.60	18.70	18.80	18.90	18
19	19.00	19.10	19.20	19.30	19.40	19.50	19.60	19.70	19.80	19.90	19
20	20.00	20.10	20.20	20.30	20.40	20.50	20.60	20.70	20.80	20.90	20
21	21.00	21.10	21.20	21.30	21.40	21.50	21.60	21.70	21.80	21.90	21
22	22.00	22.10	22.20	22.30	22.40	22.50	22.60	22.70	22.80	22.90	22
23	23.00	23.10	23.20	23.30	23.40	23.50	23.60	23.70	23.80	23.90	23
24	24.00	24.10	24.20	24.30	24.40	24.50	24.60	24.70	24.80	24.90	24
25	25.00	25.10	25.20	25.30	25.40	25.50	25.60	25.70	25.80	25.90	25
26	26.00	26.10	26.20	26.30	26.40	26.50	26.60	26.70	26.80	26.90	26
27	27.00	27.10	27.20	27.30	27.40	27.50	27.60	27.70	27.80	27.90	27
28	28.00	28.10	28.20	28.30	28.40	28.50	28.60	28.70	28.80	28.90	28
29	29.00	29.10	29.20	29.30	29.40	29.50	29.60	29.70	29.80	29.90	29
30	30.00	30.10	30.20	30.30	30.40	30.50	30.60	30.70	30.80	30.90	30
31	31.00	31.10	31.20	31.30	31.40	31.50	31.60	31.70	31.80	31.90	31
32	32.00	32.10	32.20	32.30	32.40	32.50	32.60	32.70	32.80	32.90	32
33	33.00	33.10	33.20	33.30	33.40	33.50	33.60	33.70	33.80	33.90	33
34	34.00	34.10	34.20	34.30	34.40	34.50	34.60	34.70	34.80	34.90	34
35	35.00	35.10	35.20	35.30	35.40	35.50	35.60	35.70	35.80	35.90	35
36	36.00	36.10	36.20	36.30	36.40	36.50	36.60	36.70	36.80	36.90	36
37	37.00	37.10	37.20	37.30	37.40	37.50	37.60	37.70	37.80	37.90	37
38	38.00	38.10	38.20	38.30	38.40	38.50	38.60	38.70	38.80	38.90	38
39	39.00	39.10	39.20	39.30	39.40	39.50	39.60	39.70	39.80	39.90	39
40	40.00	40.10	40.20	40.30	40.40	40.50	40.60	40.70	40.80	40.90	40
41	41.00	41.10	41.20	41.30	41.40	41.50	41.60	41.70	41.80	41.90	41
42	42.00	42.10	42.20	42.30	42.40	42.50	42.60	42.70	42.80	42.90	42
43	43.00	43.10	43.20	43.30	43.40	43.50	43.60	43.70	43.80	43.90	43
44	44.00	44.10	44.20	44.30	44.40	44.50	44.60	44.70	44.80	44.90	44
45	45.00	45.10	45.20	45.30	45.40	45.50	45.60	45.70	45.80	45.90	45
46	46.00	46.10	46.20	46.30	46.40	46.50	46.60	46.70	46.80	46.90	46
47	47.00	47.10	47.20	47.30	47.40	47.50	47.60	47.70	47.80	47.90	47
48	48.00	48.10	48.20	48.30	48.40	48.50	48.60	48.70	48.80	48.90	48
49	49.00	49.10	49.20	49.30	49.40	49.50	49.60	49.70	49.80	49.90	49
50	50.00	50.10	50.20	50.30	50.40	50.50	50.60	50.70	50.80	50.90	50

REPRODUCED FROM THE SURVEYING AND MAPPING DIVISION OF THE U.S. GEOLOGICAL SURVEY, WASHINGTON, D.C. 20540.

Distance of slope stake from side or shoulder stake for any width roadway, slope 1 to 1. If ground is nearly level, the cut or fill at side stake is located by the double entry method in left column and top row. The number in body of table in same row and column gives distance from side stake to slope stake. If ground is not level estimate the difference in elevation between the side stake and slope stake, lower target by this amount if cut, elevate if fill. Add this amount to cut or fill and find distance in table. Set up rod at this point, and line of sight should cut target. If it does not make the slight adjustment necessary.

TABLE XIII—CORRECTIONS FOR TANGENTS AND EXTERNALS

These corrections are to be added to the approximate values, found by dividing the tangent, or external, for a 1° curve (Table VIII) by the degree of curve, in order to obtain the true tangents, or externals. Intermediate values may be obtained by interpolation.

FOR TANGENTS ADD

Central Angle	DEGREE OF CURVE														
	5°	10°	15°	20°	25°	30°	35°	40°	45°	50°	55°	60°	65°	70°	
10°	.03	.06	.09	.13	.16	.19	.22	.25	.28	.31	.34	.38	.42	.46	
15°	.04	.10	.14	.19	.24	.29	.34	.39	.45	.51	.57	.63	.68	.74	
20°	.06	.13	.19	.26	.32	.39	.45	.51	.58	.65	.72	.79	.84	.90	
25°	.08	.16	.24	.33	.40	.49	.58	.67	.75	.83	.90	.99	1.06	1.14	
30°	.10	.19	.29	.39	.49	.59	.69	.79	.89	.99	1.09	1.20	1.29	1.39	
35°	.11	.22	.34	.47	.58	.69	.79	.89	.99	1.09	1.20	1.29	1.39	1.49	
40°	.13	.26	.40	.53	.67	.80	.93	1.06	1.20	1.34	1.49	1.64	1.79	1.94	
45°	.15	.30	.44	.60	.76	.91	1.06	1.21	1.37	1.52	1.70	1.87	2.04	2.21	
50°	.17	.34	.51	.68	.85	1.02	1.19	1.36	1.54	1.72	1.91	2.10	2.29	2.48	
55°	.19	.38	.57	.76	.95	1.14	1.32	1.52	1.72	1.92	2.14	2.35	2.56	2.77	
60°	.21	.42	.63	.84	1.05	1.27	1.49	1.71	1.94	2.17	2.38	2.60	2.83	3.07	
65°	.23	.46	.69	.93	1.16	1.40	1.64	1.88	2.13	2.38	2.63	2.88	3.13	3.39	
70°	.25	.51	.76	1.02	1.28	1.54	1.80	2.06	2.33	2.60	2.88	3.16	3.44	3.72	
75°	.27	.56	.83	1.12	1.40	1.69	1.98	2.27	2.57	2.87	3.16	3.47	3.78	4.09	
80°	.30	.61	.91	1.22	1.53	1.84	2.15	2.46	2.78	3.10	3.44	3.78	4.12	4.46	
85°	.33	.66	1.00	1.33	1.68	2.02	2.36	2.70	3.05	3.40	3.77	4.14	4.55	4.89	
90°	.36	.72	1.09	1.45	1.83	2.20	2.57	2.94	3.32	3.70	4.10	4.50	4.91	5.32	
95°	.39	.79	1.19	1.55	2.00	2.40	2.80	3.20	3.61	4.02	4.40	4.98	5.38	5.83	
100°	.43	.86	1.30	1.74	2.18	2.62	3.06	3.50	3.95	4.40	4.88	5.37	5.85	6.34	
110°	.51	1.03	1.56	2.08	2.61	3.14	3.67	4.21	4.76	5.31	5.86	6.43	7.01	7.60	
120°	.62	1.25	1.93	2.52	3.16	3.81	4.45	5.11	5.77	6.44	7.12	7.80	8.50	9.22	

FOR EXTERNALS ADD

Central Angle	DEGREE OF CURVE														
	5°	10°	15°	20°	25°	30°	35°	40°	45°	50°	55°	60°	65°	70°	
10°	.001	.003	.004	.006	.007	.008	.009	.011	.012	.014	.015	.017	.018	.020	
15°	.003	.007	.010	.014	.018	.023	.027	.032	.035	.039	.043	.047	.051	.055	
20°	.006	.011	.017	.022	.028	.034	.038	.045	.051	.057	.063	.070	.076	.083	
25°	.009	.018	.027	.036	.046	.056	.066	.074	.083	.093	.106	.120	.127	.135	
30°	.013	.025	.038	.051	.065	.078	.090	.103	.116	.129	.149	.170	.179	.188	
35°	.018	.035	.054	.072	.086	.109	.131	.153	.175	.197	.213	.230	.247	.264	
40°	.023	.046	.070	.093	.117	.141	.172	.203	.234	.265	.277	.290	.315	.341	
45°	.030	.060	.093	.119	.153	.184	.216	.254	.289	.325	.351	.378	.411	.445	
50°	.037	.075	.116	.151	.189	.227	.266	.305	.345	.384	.425	.467	.508	.550	
55°	.046	.093	.142	.188	.236	.283	.332	.381	.420	.479	.530	.582	.641	.700	
60°	.056	.112	.168	.225	.283	.340	.398	.457	.516	.575	.636	.697	.774	.851	
65°	.067	.135	.204	.273	.343	.412	.483	.554	.625	.697	.771	.845	.922	1.01	
70°	.080	.159	.240	.321	.403	.485	.568	.652	.735	.819	.906	.994	1.08	1.17	
75°	.095	.182	.266	.353	.440	.528	.617	.707	.797	1.07	1.18	1.29	1.39	1.49	
80°	.110	.220	.332	.445	.558	.671	.787	.903	1.02	1.13	1.25	1.38	1.50	1.62	
85°	.128	.259	.391	.524	.657	.790	.926	1.06	1.20	1.34	1.47	1.62	1.76	1.91	
90°	.149	.299	.450	.603	.756	.910	1.07	1.22	1.38	1.54	1.70	1.87	2.03	2.20	
95°	.174	.350	.522	.706	.885	1.06	1.25	1.43	1.62	1.80	1.99	2.18	2.38	2.58	
100°	.200	.401	.604	.809	1.01	1.22	1.43	1.64	1.85	2.06	2.28	2.50	2.73	2.96	
110°	.268	.536	.806	1.08	1.35	1.63	1.91	2.20	2.48	2.76	3.05	3.35	3.66	3.96	
120°	.360	.721	1.08	1.45	1.82	2.19	2.57	2.95	3.33	3.72	4.11	4.50	4.91	5.32	

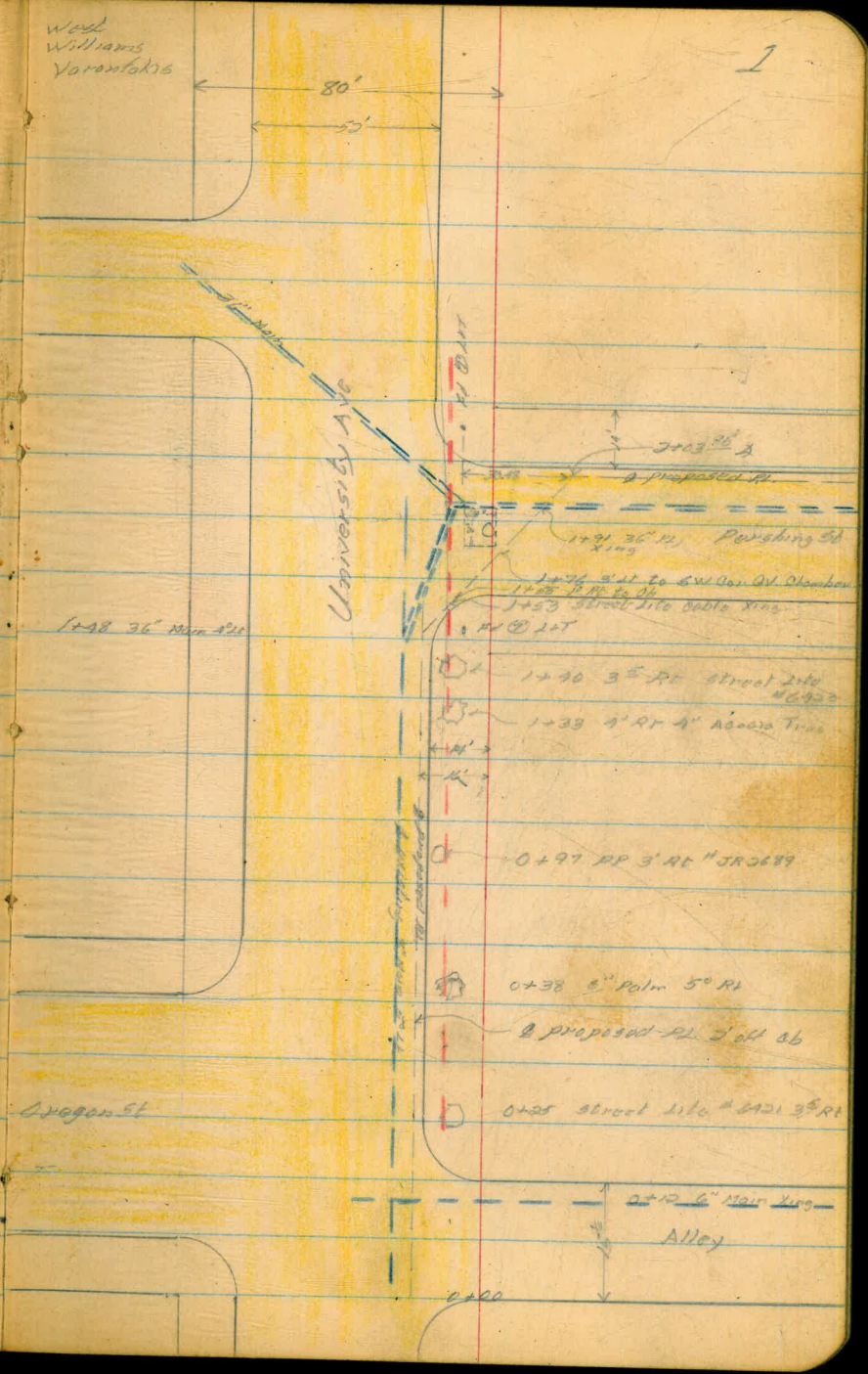
*Alice*  
 Pershing Ave University to Landis 1-4  
 Bancroft - Ocean View to Martin 5-6  
*Alice*  
 33rd St. Imperial to "K" St. 7-8  
 23rd St. Imperial to Commercial 9-10  
 Logan Ave 40th to 41st 11-12  
 Logan Ave 35th to Webster Freeway 13-14  
 Nardica St. 42nd to 43rd 15-16  
 Toyne St. Marlowe to 5th St. 18-19  
 Marine View Ave. 41st to Division 20-21  
 Tompkins 35th to Cemetery Prop 22-23  
*Alice*  
 Everets, Parker Pl to Pacific Beach Dr. 24-25  
 Parker Pl. Farnuel to Everets 26-27-28  
 Horn Island, Figueroa to Pico 29-34  
 Grand Ave, Olney to Lamont (Plan only) 35-37  
 Grand Ave Olney to School prop 39-46  
 Grand Ave. Olney to Lamont (revised profile) 47-50  
*Alice*

University Ave 5ths Far. 6" AC Main *Alice*  
 Pershing Ave University to Landis 51-52  
 Marine View Ave 41st to Division 53-54  
 5ths Far. 6" x 8" AC Main *Alice*  
 Grand Ave Marrell to Bond 60-70  
 HORNBLIND ST., FIGUEROA TO PICO @ 5THS FAR. 71-72  
 MARTIN ST, ALLEY E of 32nd to Bancroft St *Alice* 74-75  
 PROPOSED EASEMENT LOT 24 MUIRLANDS CREST. - 76  
*Alice*

Pershing St  
 Alley West of Pershing Ave  
 to Land's

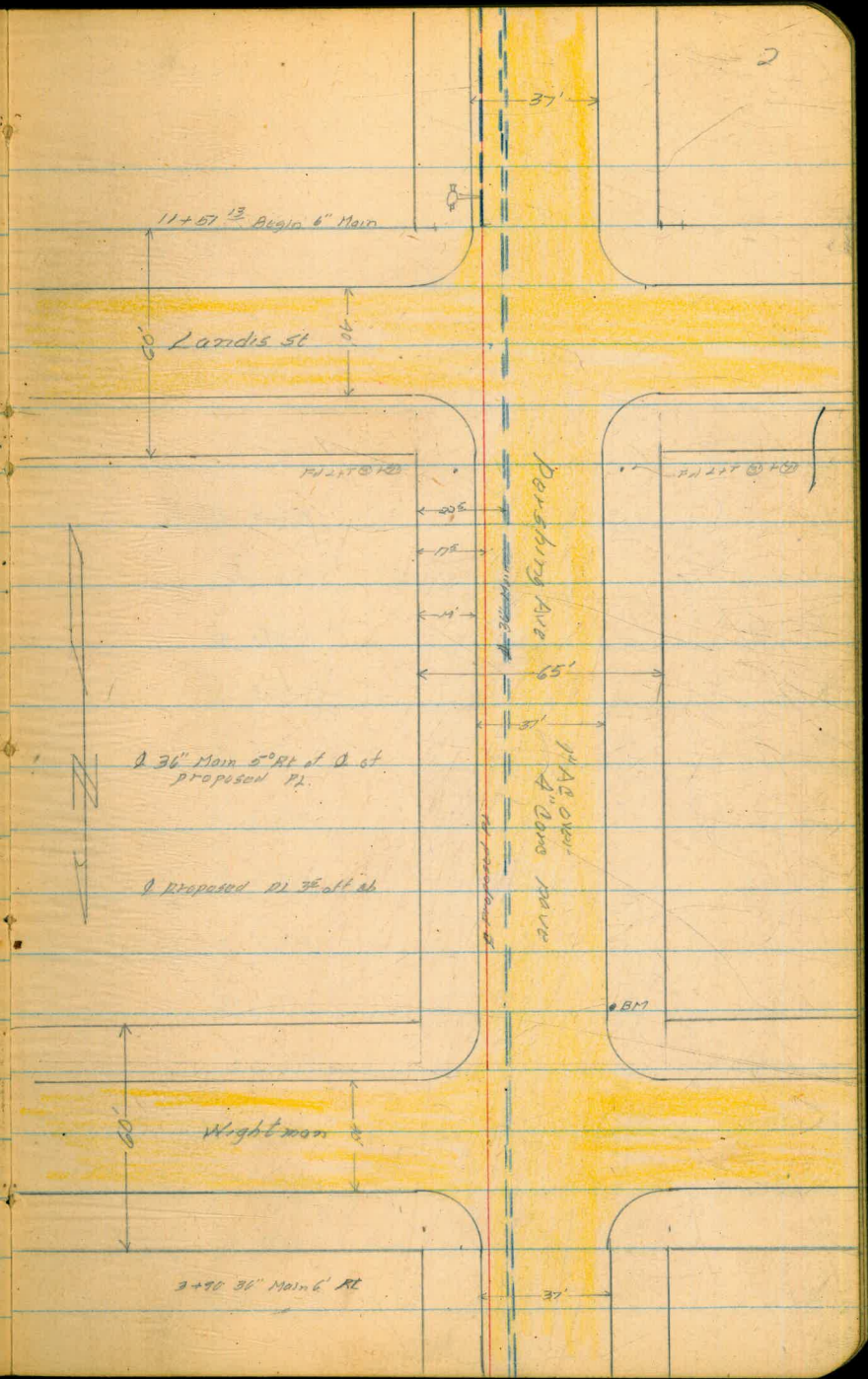
2+03 <sup>85</sup>  $\Delta$  45° 16' 30" RT  
 1+48  $\Delta$  45° 00' 00" RT

0+700 West prop line Alley



11+51 <sup>14</sup>

South property Landis



Profile Pershing Air  
University to Landis

West  
Williams  
Varonfakis

3

3/17/64

7.28 34.5 29 338.01

SW BP Wightman & Pershing

0+00 1230 333.0

West prop line Alley

+50 10.94 335.0

1+00 8.56 336.7

1+8~~8~~ 6.60 338.7

+50 4.67 338.6

2+03<sup>85</sup> 4.97 340.32

+50 5.70 339.6

3+00 6.37 338.9

+50 6.81 338.5

4+00 7.34 338.0

+38 7.96 337.3

Outlet Pershing

+50 7.33 338.0

5+00 6.76 338.5

+50 6.25 339.0

6+00 5.65 345.04 5.80 339.19

+50 5.26 340.0

7+00 4.90 340.1

+50 4.59 340.45

345.04

8+00	4.44	340.6
+50	4.71	340.3
9+00	5.12	339.90
+50	5.45	339.59
10+00	5.87	339.17
+50	6.20	338.84
11+00	6.53	338.51
+50	7.10	337.94

4.23 345.11 4.16 340.88

7.08 338.08 = 338.01

Turn on FH SF. Cor. Punching + Lardis

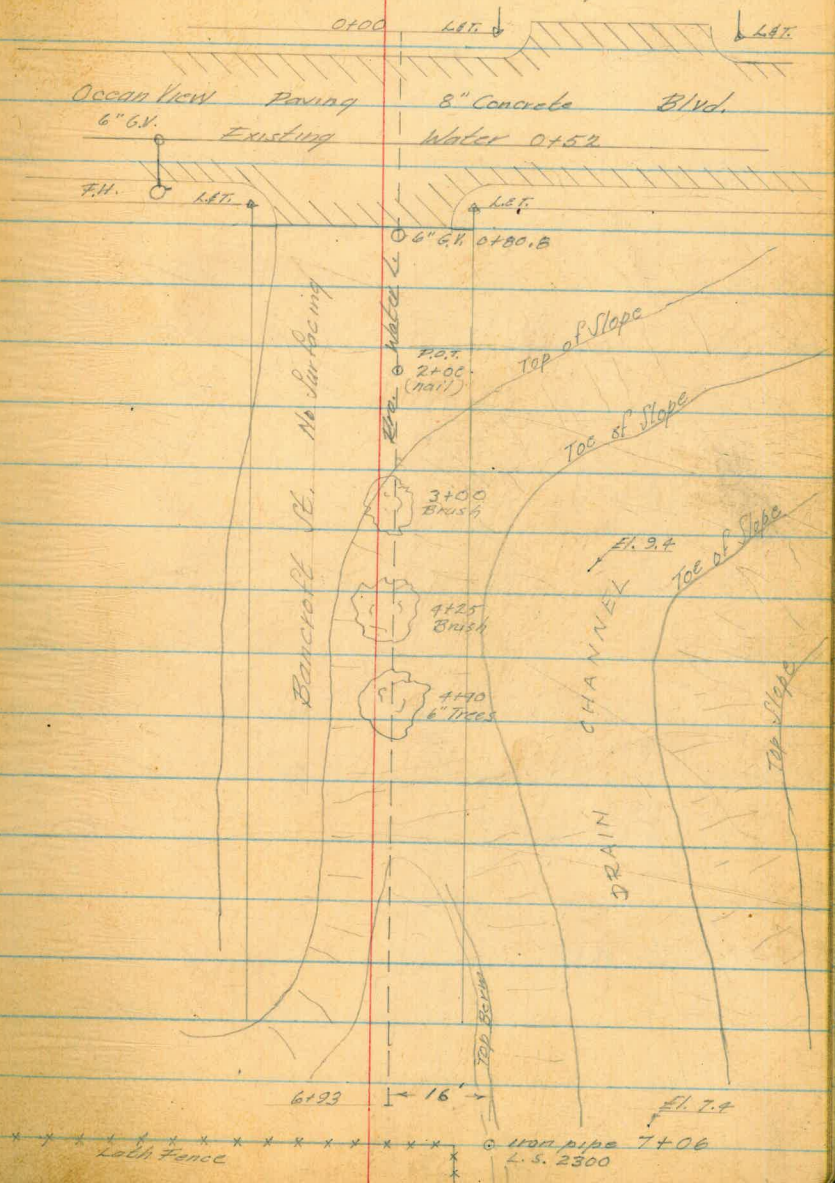
WERT.  
Holahan  
Varantales

Profile of Bancroft - Ocean View

to Martin

4-1-54  
Cool & Cloudy

Station	+	H.I.	-	Alt.	B.M. S.W. + H.
				36.73	Ocean View, Ban.
	0.40	36.63			
0+00			2.1		34.5
+13.8			2.60		34.0
+50			3.8		32.8
+80			4.52		32.1 Sea edge
+100			4.5		32.1
+50			4.6		32.0
2+00			5.3	31.3	L 7.9 R 4.7 20 10
+15			6.7		29.9
+49			15.4		21.2
+89			11.8	24.8	L 28.1 R 6.8 35 20
T.P.			4.95	31.68	
	0.42	32.10			
3+50			19.3	19.8	L 26.0 R 1.5 25 25
4+00			15.5	16.6	





Bancroft - Ocean View to Martin

Station	+	H.L.	-	Elev.	
		32.10			
T.P.			11.01	21.09	
	3.43	29.52			
4150			4.2	20.3	
5100			7.1	14.4	L. 18.9 30
+50			9.0	15.5	K. 2.4 15
6100			13.6	10.9	L. 10.6 10
+50			13.7	10.8	K. 18.3 25
+98			14.1	10.4	P. 1.0 25
			11.96	12.56	1" iron pipe L.S. 2300 Set T.B.M.
	12.95	25.51			
T.P.			4.36	21.15	
	10.96	32.11			
			0.12	31.99	
	4.47	36.46			
			0.24	36.22	
				36.23	B.M. SW. F.N. Ocean View B.M.

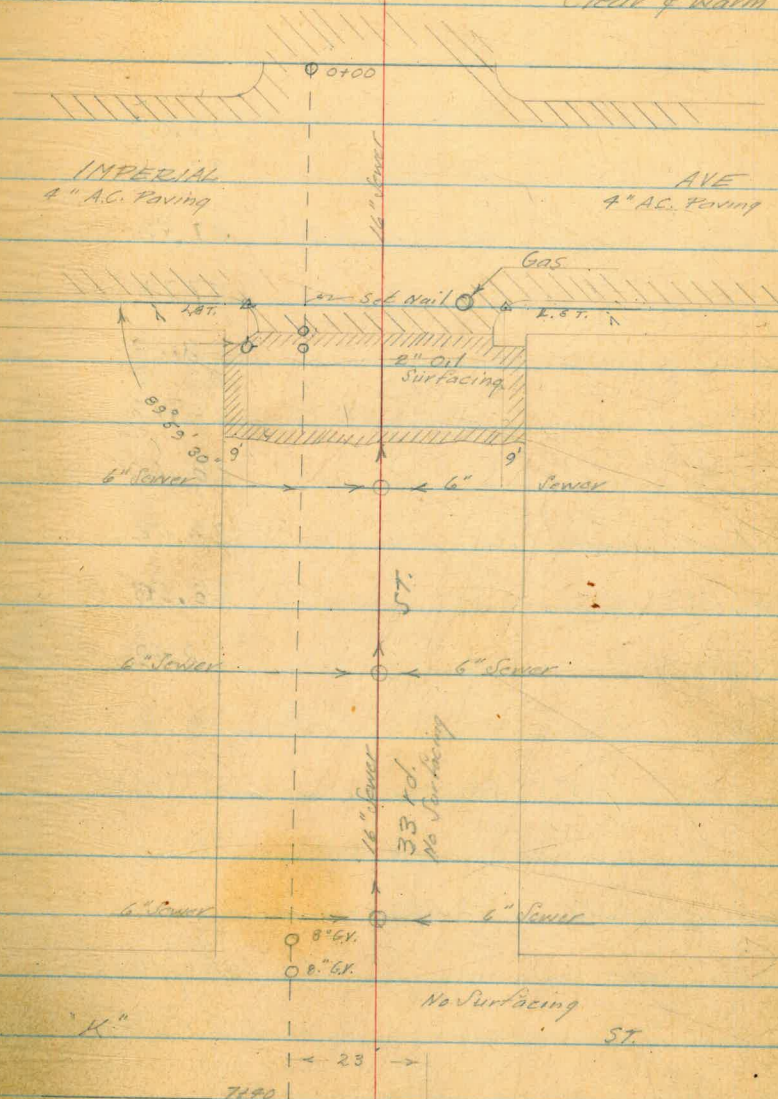
Profile of 33rd St. Imperial to

"K" St.

Wert  
Holaban  
Varonfakes  
4-1-54

Clear & Warm

Station	+	H.I.	-	Elev.	
				27.02	S.E. Cor 2.47 Imperial
	2.70	29.72			
0+00			2.6	27.12	
+50			2.6	27.12	
+67			2.93	26.79	No. Gutter Line Imp. No Prop.
+80			2.76	26.96	Imperial 6" G.V.
+82			2.90	26.82	
1+00			3.1	26.62	
+50			4.4	25.32	
2+00			5.0	24.72	
		Flow	11.99	17.73	M.H. Sewer
+16		Flow	4.99	24.73	
+50			5.1	24.62	
3+00			4.7	25.02	
+50			4.3	25.42	
4+00			3.8	25.92	
+50			3.5	26.22	
5+00			3.0	26.72	



cont. Map.

Profile of 33rd Imperial

to "K"

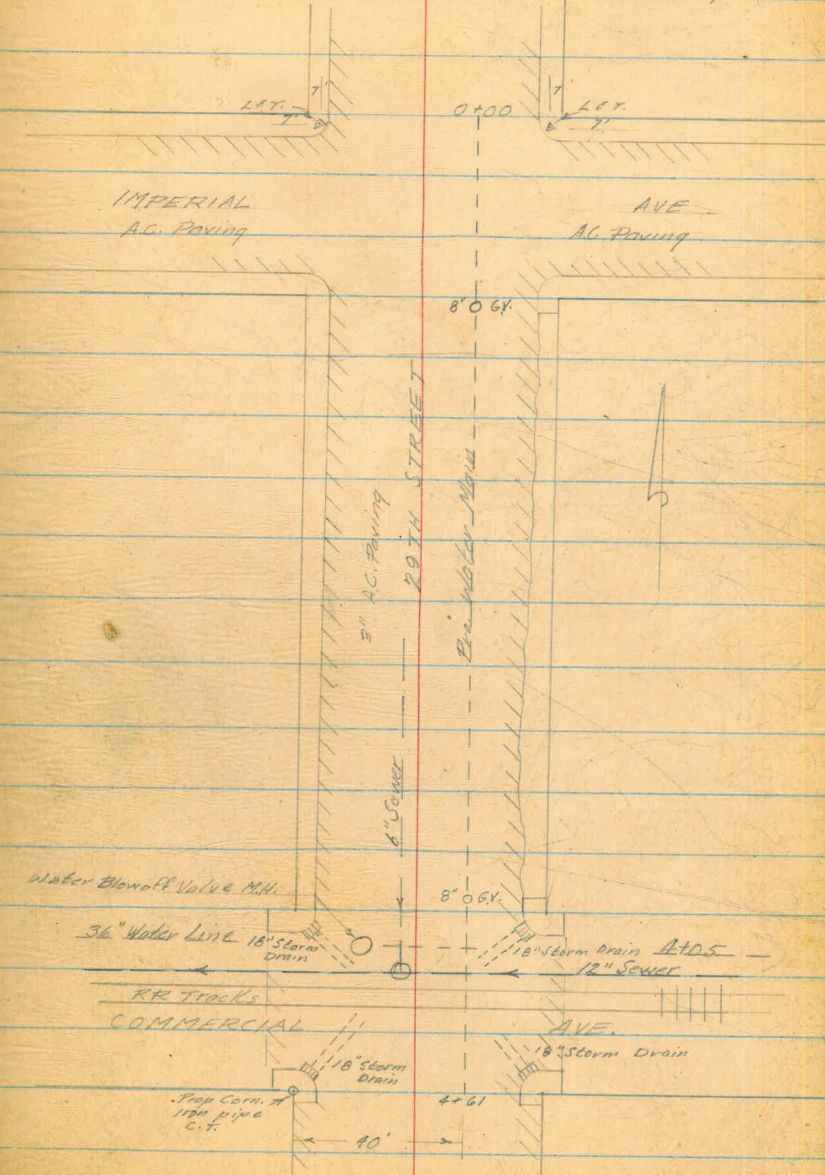
Station	+	H.I.	-	Elev.	
		29.72			
5+46		Flow	10.07	19.65	M.H.
		Rim	2.06	27.66	Sewer
1+50			2.3	27.42	
6+00			2.0	27.72	
1+50			1.5	28.22	
		Flow	9.02	20.70	M.H.
1+72		Rim	0.98	28.76	Sewer
1+97			1.12	28.60	8" G.V.
7+00			1.1	28.62	
1+03			1.18	28.56	8" G.V.
7+40			1.3	28.42	No. Prop. "K" St.
T.P.			0.99	29.28	
1.03	30.31				
			1.93	28.88	Set T.B.M. con Mon.
1.34	30.22				
			3.24	26.98	
				27.02	1.27 S.E. corn Imperial

Went  
Hala han  
Varen stakis.  
4-2-54  
9  
Clear & Warm

Profile 29th St. Imperial Ave

To Commercial

Station	+	H.L.	-	Elev.	W. B. P. 29th Imperial
	4.39	76.44		72.05	
0+00			4.09	72.4	6" G.V. No. Gutter
+14			4.45	72.0	Imperial
+50			4.1	72.3	So. Gutter
+66			4.56	71.9	Imperial
+82			4.77	71.7	8" G.V.
1+00			5.0	71.4	
+50			5.4	71.0	
2+00			5.7	70.7	
+50			6.1	70.3	
TP			5.98	70.46	
	5.23	75.69			
3+00			5.7	70.0	
+50			6.1	69.6	N. Prop.
+81			6.61	69.1	Commercial



## Profile 29th Imperial to Commercial

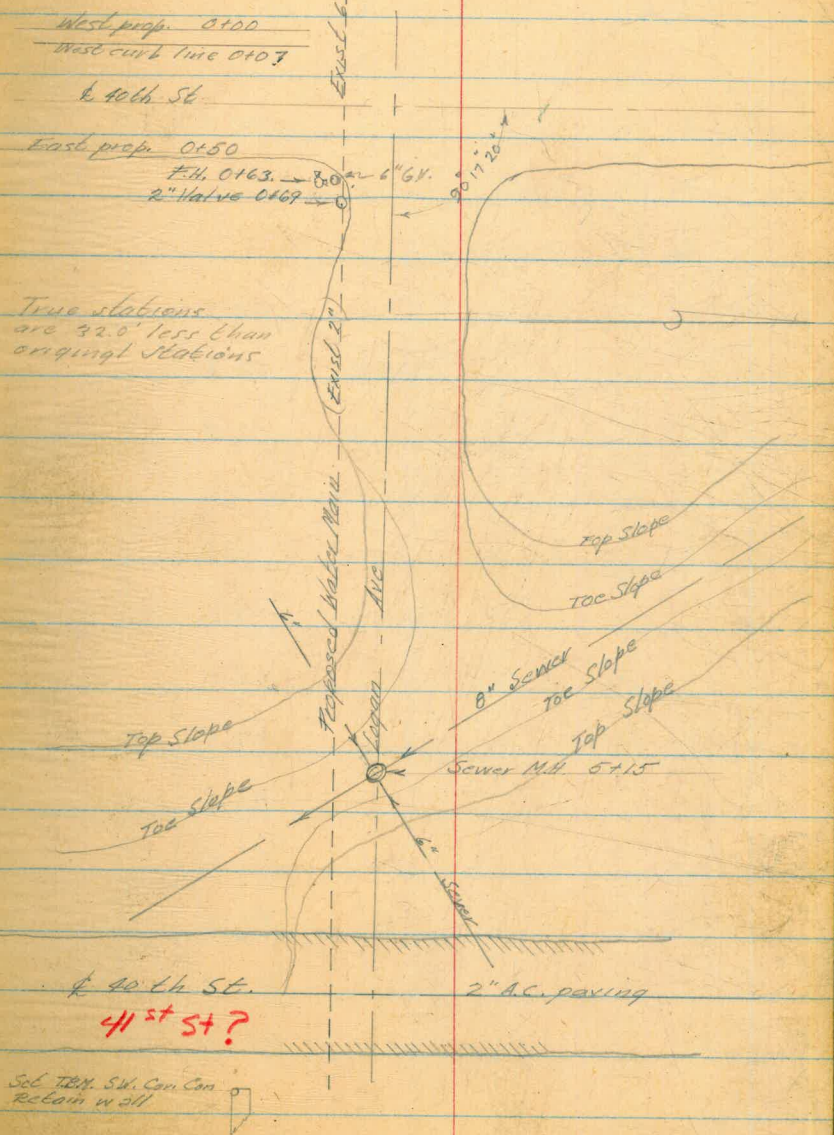
Station	H.I.	-	Elev.	
	75.69			
3+90		11.49	64.2	Flow line Rd. Drain
3+92		10.10	65.6	Flow line Lt. Drain
4+00		6.6	69.1	
4+05		8.00		Top Concr Cack
		6.49		Water M.H.
+10		6.32		Sewer M.H. Rim
		11.02		Sewer Flow line
+19		6.40		Top RR. Track
+21		6.32		4 Track F.L.
4+47		11.50		Rd. Drain F.L.
		11.50		Lt. Drain
+50		7.2	68.5	
+61		7.1		
		6.88	68.51	Iron pipe S.W. Prop Cor Com. 4 29 66
7.P.		4.95	70.74	
579	76.53			
		4.47	72.06	
			72.05	B.M.

Profile of Logan Ave 40th St

Sta	+	H.I.	-	Elev	S.M. F.N. 40th National
	5.49	70.89		65.40	
T.P.			3.10	67.79	
	4.86	72.65			
0+32.0 <del>0+00</del>			4.1	68.6	
0+18 <del>0+00</del>			4.5	68.2	
0+68.0 <del>0+00</del>			2.3	70.4	
1+18.0 <del>0+00</del>			2.2	70.5	
1+68.0 <del>0+00</del>			5.8	66.9	
2+18 <del>0+00</del>			9.6	63.1	
2+68 <del>0+00</del>			12.8	59.9	
2+83 <del>0+00</del>			12.6	60.1	
3+18 <del>0+00</del>			8.7	64.0	
3+84.6 3+52.6			9.4	63.3	
P.O.T. 3+68 <del>0+00</del>			11.4	61.3	
T.P.			12.14	60.51	
	1.19	61.70			

WERT  
Varonstokis  
Holahan  
4-5-54  
clear & drain

to 41st St.



Logan Ave. 40th to 41st

Sta	+	H.I.	-	Elev		Sta	+	H.I.	-	Elev	
		66.70						49.64			
3+93						6+97					E. edge
4+25			6.8	54.9		7+11	97		8.1	41.5	of pave
						6+87					
T.P.			12.50	49.20		4+9			5.4	44.2	
	0.44	49.64				7+07			5.1	44.5	
4+18						+32.09					See TOM
4+50			2.7	46.9					5.85	43.79	SW. Corn. Rd. Wall
4+43											
4+75			10.8	38.8			0.21	44.00			
4+68											
5+00			16.9	32.7		T.P.			0.13	43.87	
4+83			23.4		F.L. Sewer						
4+15			15.9		Dim Sewer		12.71	56.58			
5+18											
4+50			16.9	33.7		T.P.			0.19	56.39	
5+43											
4+75			11.6	38.0	Top Slope		9.12	65.51			
5+68											
6+00			4.8	44.8		T.P.			0.12	65.39	
5+79											BM. FH.
4+13			1.8	47.8	Top Slope					65.90	SW. Corn. 427 Nub.
6+00											
4+39			1.5	48.1							
6+18											
4+50			4.1	45.5							
6+55											
4+87			9.9	39.7							
6+62					West edge						
4+94			8.34	41.3	pave. 40th						
6+68											
7+00			8.1	41.5							

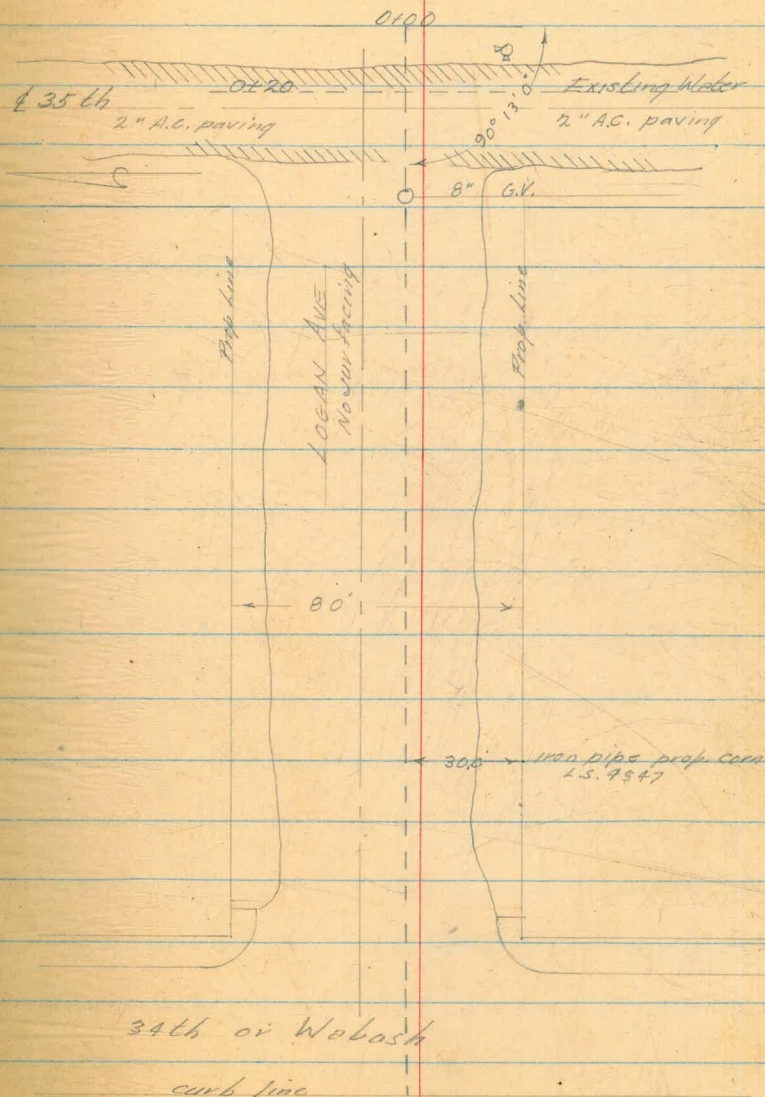
Wert  
Kronfolis  
Halation 4-6-54

13

Profile of Logan Ave 35th St to Wabash

Clear of Wabash

Sta.	L	H.I.	-	Elev.	S.E. F.H.
				44.19	35th, National
	11.85	56.04			
0+100			2.0	54.0	E. edge
+19			2.4	53.6	pave 35th
+46			2.6	53.4	w. edge.
+50			4.1	51.9	pave 35th
1+100			5.3	50.7	
T.P.			5.09	50.95	
	0.33	51.28			
+50			2.6	48.7	
2+100			4.6	46.7	
+50			6.7	44.6	
P.O.T.					
2+77.7			7.9	43.4	
3+00			9.2	42.1	
+50			13.0	38.3	
T.P.			13.04	38.24	
	0.55	38.79			





Logan Ave 35th to Wabash

Sta	+	Hi.	-	Elev
		38.79		
4+00			5.7	33.1
+50			11.9	29.4
T.P.			13.20	25.59
	0.62	26.21		
5+00			4.8	21.4
+50			10.1	16.1
6+00			11.3	14.9
6+18.3			10.20	16.0
			4.33	21.88
	12.82	34.70		
T.P.			0.28	34.42
	13.12	47.54		
T.P.			0.02	47.52
T.P.	9.19	56.72		
			12.56	44.16
			44.19	B.M.

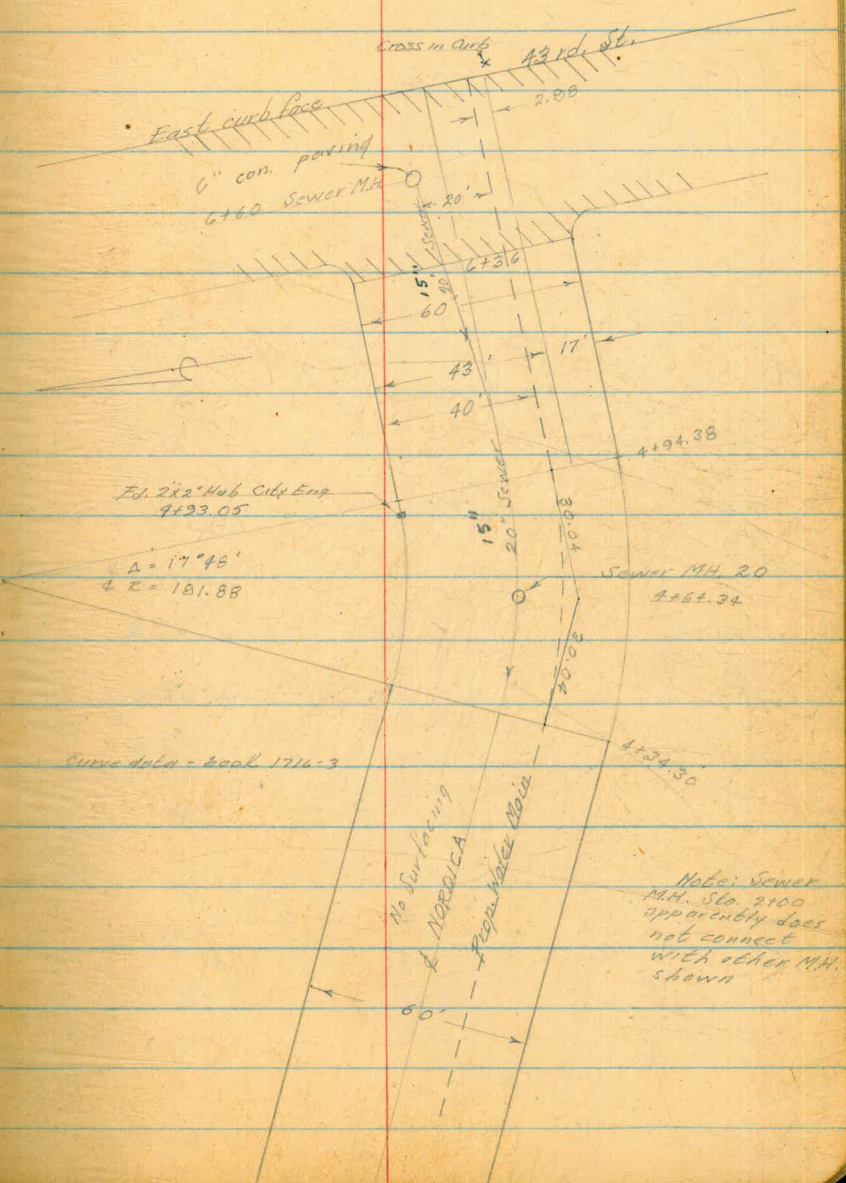
West Top  
 curb 34.66  
 Iron pipe  
 NE. 1st Cor.  
 L.S. 4847

Wert  
Koronskalis  
Hilshon 4-7-54 15

Profile Nordica 42nd to 43rd

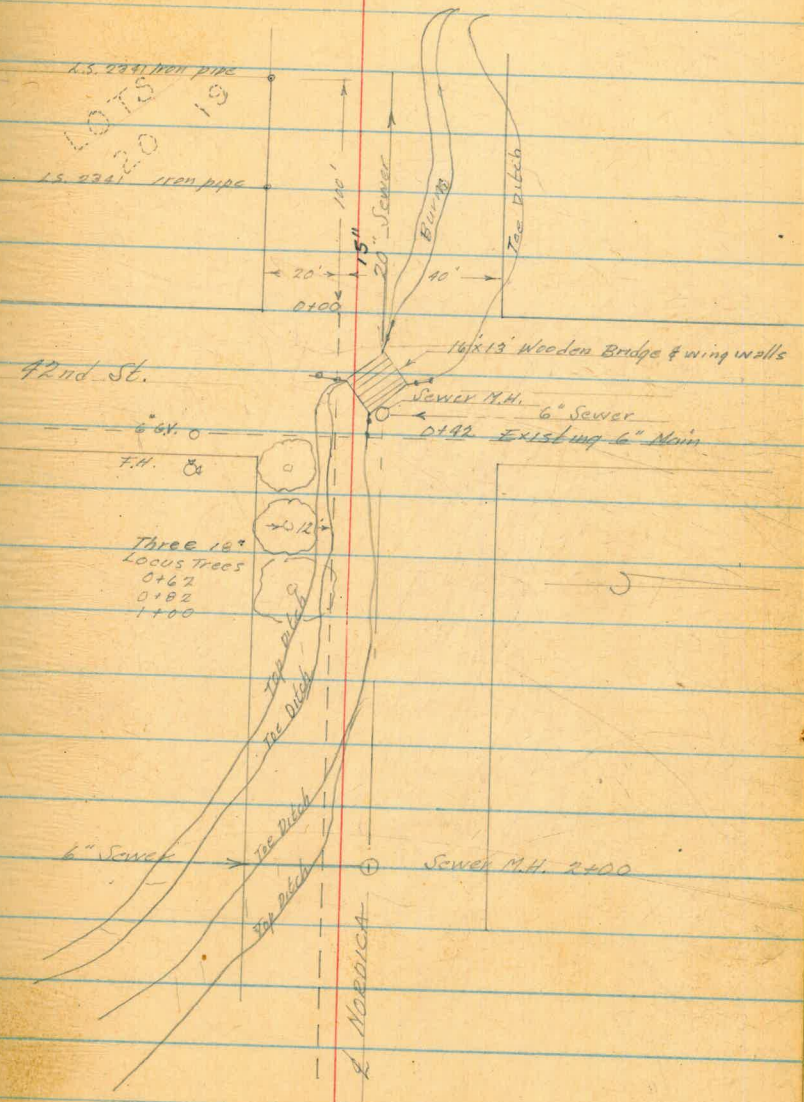
Clear & Warm

Sta.	+	H.I.	-	Elev.	
				42.84	N.W. cor. 22nd Division B.P.
	0.69	43.48			
T.P.			12.68	30.80	
	0.04	30.84			
T.P.			8.19	22.65	
	7.72	30.37			
0+00			7.8	22.6	E. Wing
+25			6.8	23.6	Bridge
		Flow	13.28	15.09	
+27		Run	6.38	23.99	Sewer MH
+50			7.9	22.5	Draw Ditch
+68			7.1	23.3	Top Slope Draw Ditch
+83			11.7	19.7	Top Slope
1+00			10.0	20.4	Top Slope
+25			6.7	23.7	Top Slope
+50			6.8	23.6	
2+00			5.4	25.0	
		Flow	13.79	16.6	
2+01		Run	5.19		Sewer MH



Nordica 42nd to 43rd

Stations	+	H.I.	-	Elev.
		30.37		
3+00			2.0	28.4
T.P.			2.08	30.29
	9.78	35.07		
+50			3.6	31.5
4+00			3.9	31.2
BC 4+34.30			5.3	27.8
PI 4+64.34			6.4	28.7
		Flow 15.37	19.7	
4+65		Rim 4.77		Sewer M.H.
EC 4+99.38			6.6	28.5
5+50			6.5	28.6
6+00			6.3	28.8
6+32			4.2	30.9
				Wedge post
7+44			4.4	30.7
				43rd W. gutter
+50			4.2	30.9
		Flow 14.50	20.6	
+60		Rim 3.60	31.47	
				Top curb
7+00			3.8	31.3
				E. 43rd



Nordica 42nd to 43rd

Sta.	+	H.L.	-	Elev.	
		35.07			
		•	3.93	31.14	F.B.M. + on curb 43rd
	3.05	34.19			
T.P.			2.09	32.10	
	12.26	44.36			
			1.99	42.87	
				42.84	B.M.

Werk  
Varonstallis  
Halahan

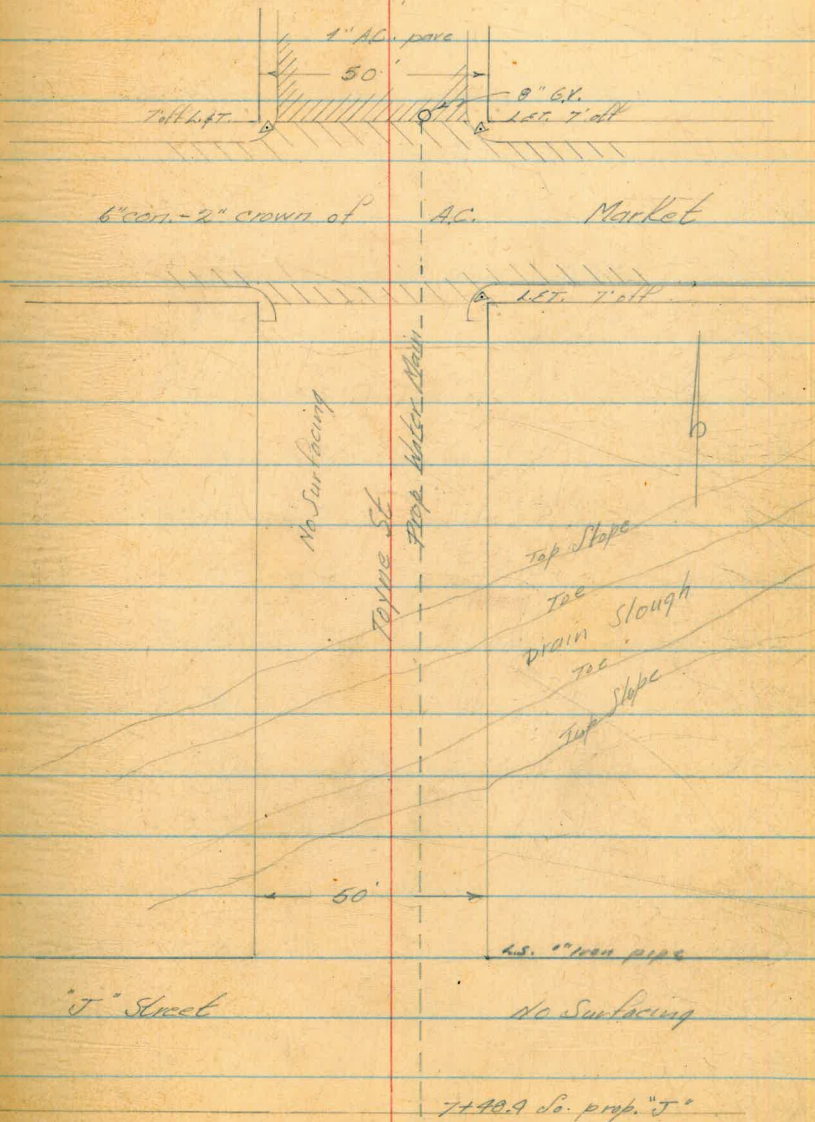
18

4-8-54

TOYNE MARKET Co "J" St.

Clear & Worm

Sta.	Dist.	Elev.	SW. BP.
		128.76	42nd Manhole
	7.82	136.58	
0+00	6.0	130.6	No. Gutter
+19	6.2	130.4	Market
150	6.1	130.5	No. Gutter
159	6.5	130.1	Market
+80	6.5	130.1	so. edge pavement
1+00	5.9	130.7	
150	5.9	130.7	
2+00	6.5	130.1	
150	7.8	128.8	
T.P.	8.01	128.57	
	0.52	129.09	
3+00	2.6	126.5	
150	6.4	122.7	
4+00	10.0	119.1	
+37	13.1	116.0	



7140.9 so. prop. "J"

## TOYNE ST MARKET to 'J'

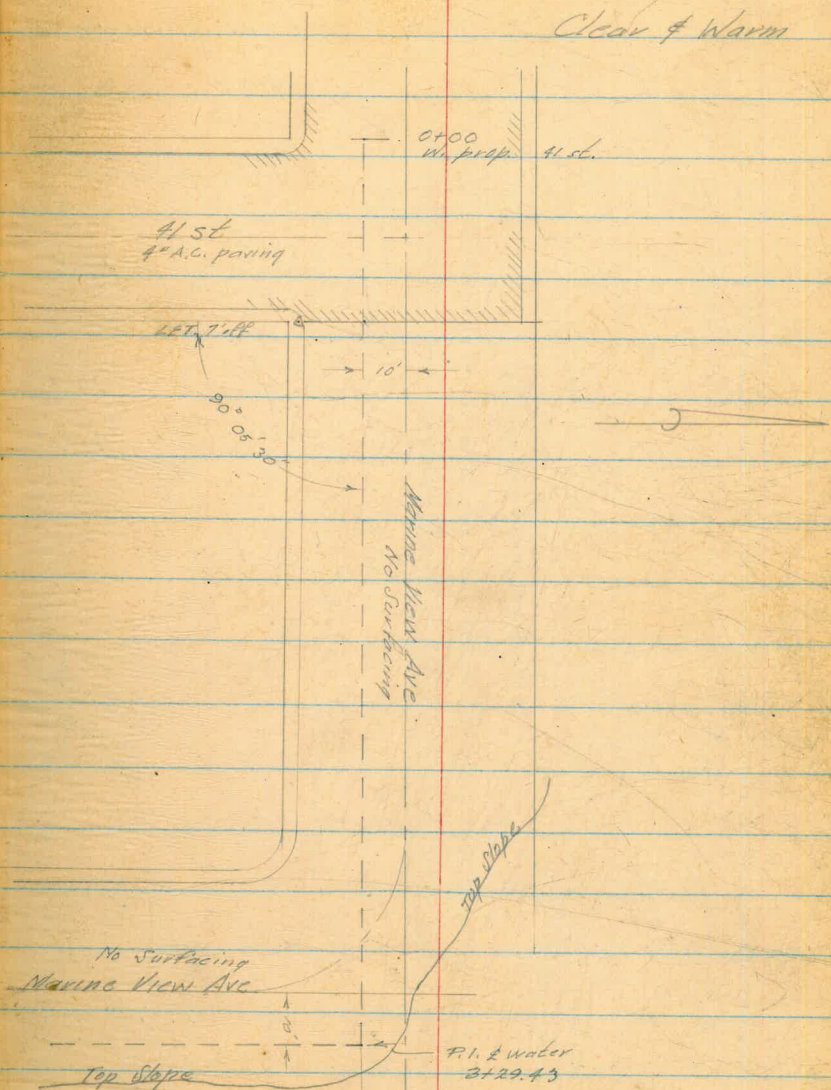
No.	+	H.L.	-	Elec.	
		129.07			
T.P.			13.13	115.96	
	10.94	126.00			
4+62			13.4	112.6	
5+00			13.0	113.0	
+50			13.2	112.8	
+80			12.8	113.2	
6+00			9.9	116.1	
+30			3.1	122.9	
+50			2.4	123.6	
7+48.4			2.5	123.5	So. prop 'J'
			2.30	123.70	
	8.73	132.43			Set T.B.M.
			0.42	132.01	Sw. cor J
	0.46	132.47			
			10.17	122.30	
	12.45	139.75			
			5.94	129.81	

Werb  
Varon Palis 20  
Holahan 4-9-54

Marine View Ave. 41st to Division

Clear & Warm

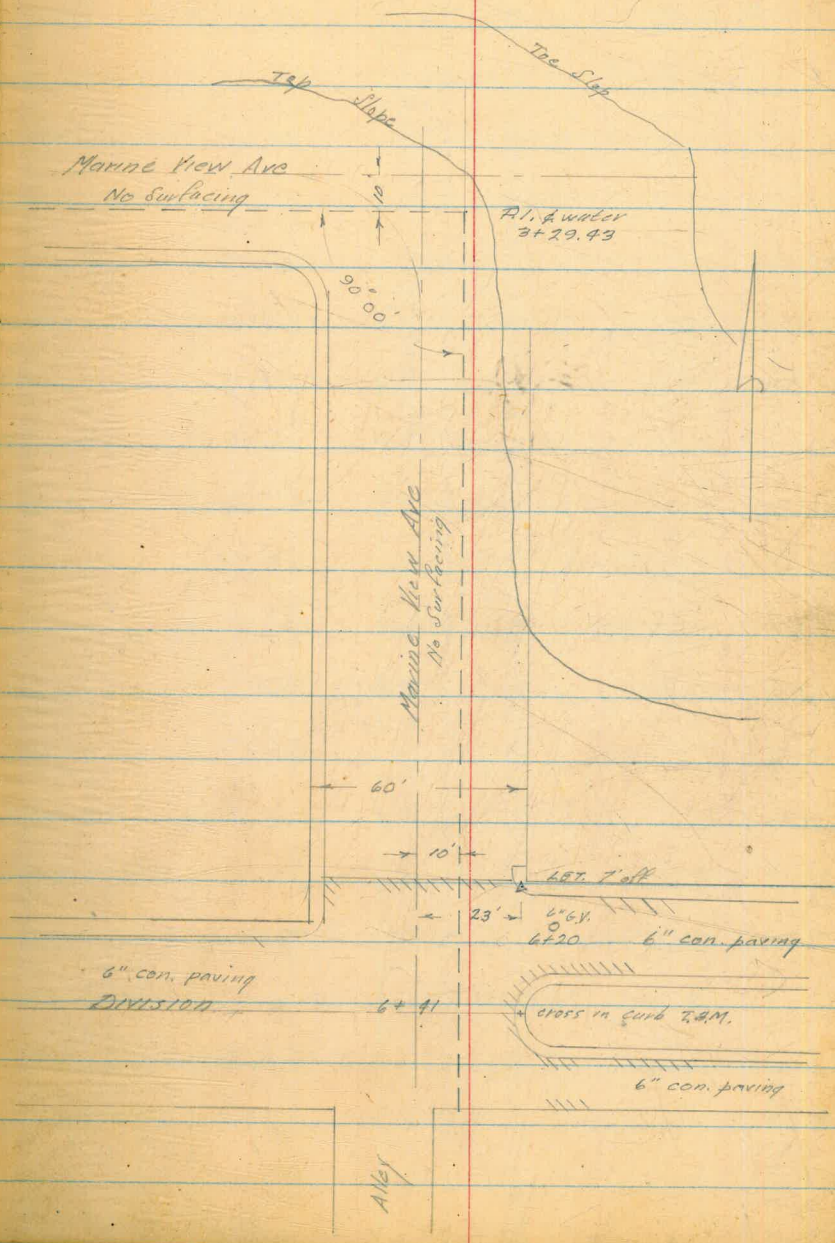
Sta.	+	H.L.	-	NW. B.P. 41st Division
	10.10	67.99		57.34
0+00			6.8	60.6
+50			5.0	62.4
+60			4.8	62.6 E. edge pave
1+00			3.5	63.9
+50			0.80	66.6
		Fl.	4.80	sewer
T.P.		Rm	0.10	M.H.
	6.30	73.64		
2+00			6.4	67.2
+50			5.7	67.9
3+00			5.1	68.5
3+29.93			5.6	68.0
4' east				
3+29.93			5.9	67.7
14' east				
3+29.93			10.7	
7' north				
3+29.93			5.8	
17' north				
3+29.93			8.8	



P.I. & water  
3+29.43

Marine View Ave. 41st to Division

Sta.		H.I.	-	Elev.	
		73.64			
3+50			5.1	68.5	
4+00			4.8	68.8	
4+50			3.8	69.8	
5+00			2.9	70.7	
5+50			2.0	71.6	
6+00			0.33	73.3	N. edge pave. Division
T.P.			0.42	73.22	
	5.21	78.43			
6+41			3.7		So. prop 74.7 Division Sub T.M.M. + on curb West E. Rd.
			3.60	74.83	
T.P.			13.06	65.37	
	0.85	66.22			
			8.87	57.35	
				57.24	B.M.



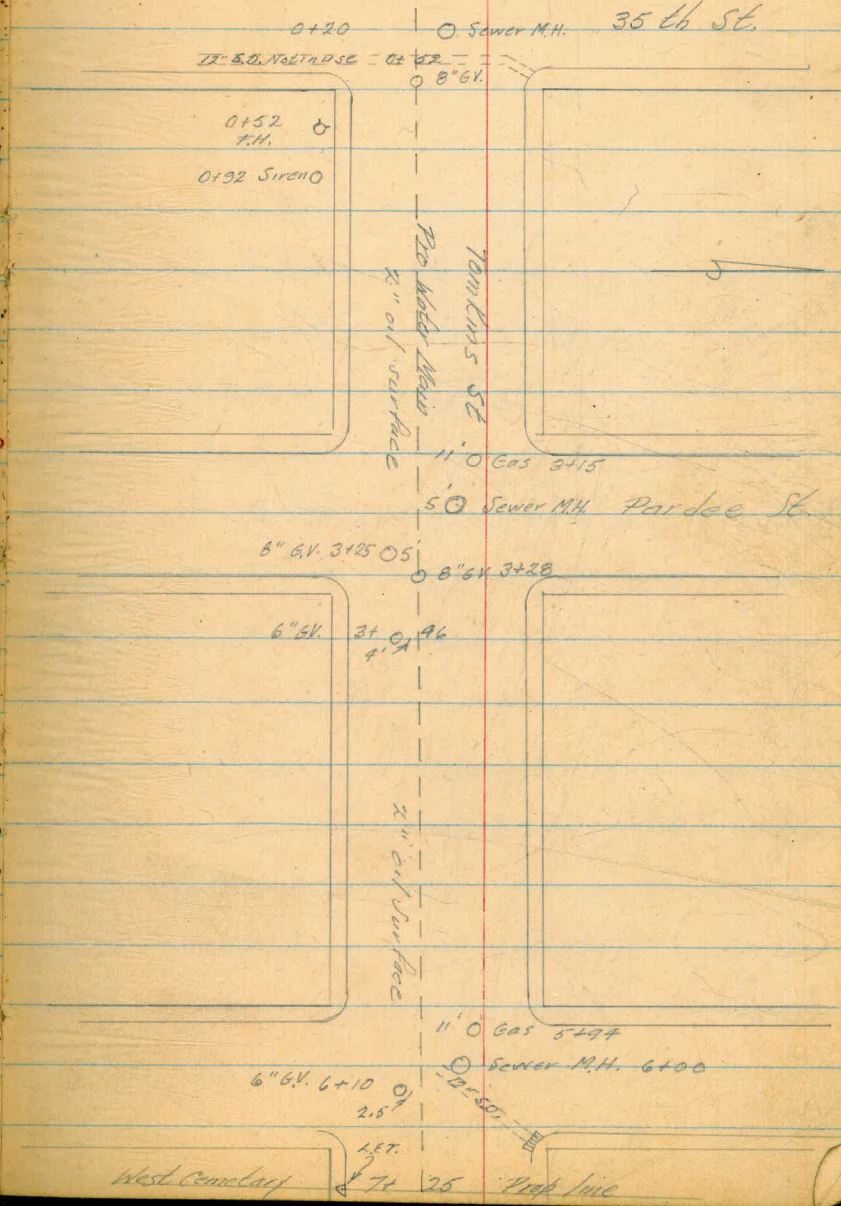


Tomkins 35th to Cemetery Prop Line

Sta	I	H.L.		Elev	SW. B.P. 35th Tomkins
	8.19	70.03		61.84	
0+00			Flow 8.4	61.6	
			Rim 11.75		Sewer
+40				63.0	M.H.
+80			7.1	62.9	
+100			6.6	63.4	
+150			5.8	64.2	
+200			5.0	65.0	
+250			4.2	65.8	
+300			3.5	66.5	
			F.L. 7.90		
+320			Rim 3.30	66.7	
+350			3.7	66.3	
+400			3.5	66.5	
T.P.			3.27	66.76	
	6.52	73.28			
+450			6.5	66.8	
+500			6.3	67.0	

WEET  
Varenakis 22  
Holohan 4-9-54

Wed prop 0100 35th Clear & Warm  
0+10 6" 0.2



## Tompkins 35th to Cemetery Prop Line

Sta	+	ht.	-	Elev.	
		73.28			
5+50			6.0	67.3	
6+00			6.0	67.3	
		Fl.	15.82		Sewer M.H.
6+00		Rim	5.82	67.5	5' No
+25			5.9	67.4	
+50			5.7	67.6	
		Fl.	8.8		TOP 12"
+50		Top	5.9	67.4	Drain
7+00			1.7	68.6	
+25			3.8	69.5	Cemetery Prop.
			3.80	69.48	Set TBM N&T P.I. Cen of So Tan.
	2.65	72.13			
T.P.			5.74	66.39	
	3.10	69.57			
			7.73	61.84	
				61.84	B.M.

WEET  
KEMP  
VARONFAKIS

24

6-22-54

Profile of Water Everts St  
Parker Pl. to Pac. Beach Dr.

- 0+00 No. prop. line Pac. Beach Dr.
- +10 No. curb line
- +30 of Pac. Beach Dr., Sewer M.H.
- +50 Sq. curb line
- +60 So. prop. line, end 6" con. pave.

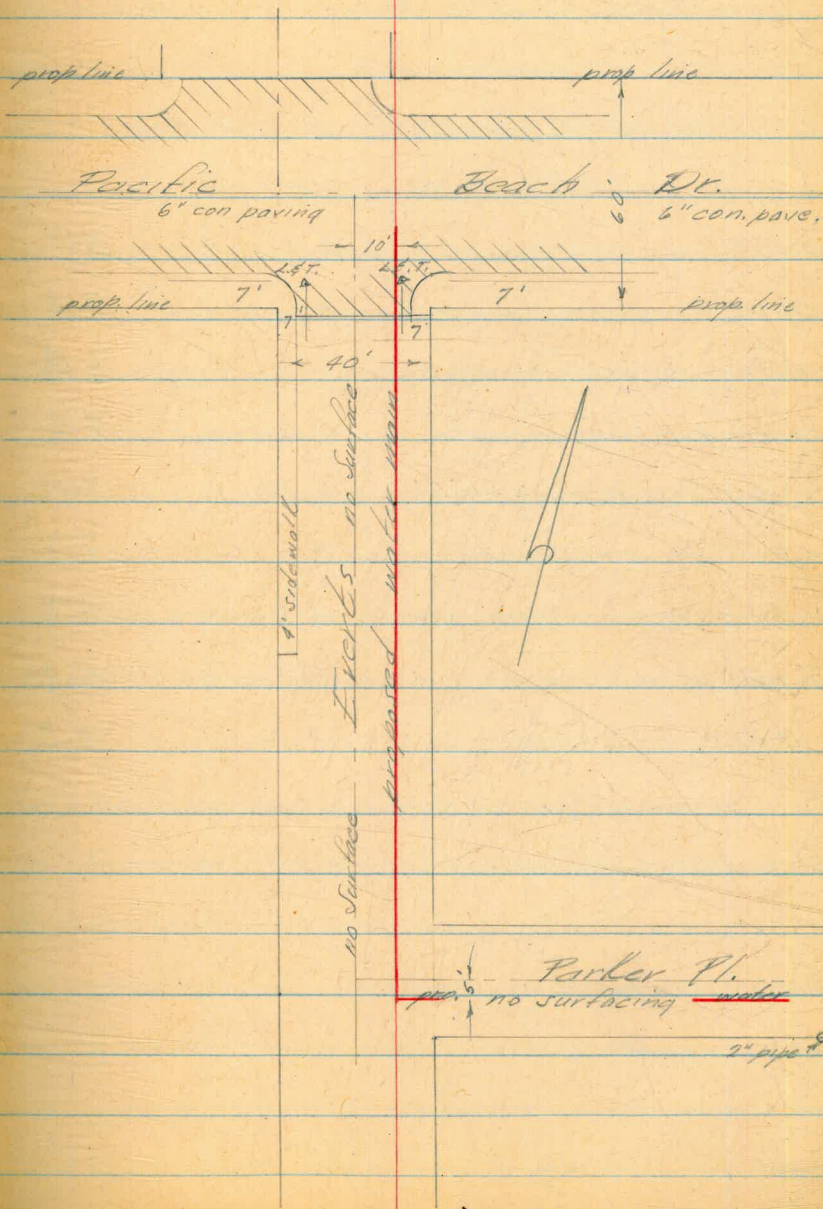
1+50 End of sidewalk

1+90 No. prop. line Parker Pl.

2+05 of Parker Pl.

2+10 P.L. of proposed water lines

2+20 So. prop. line



Parker Pl.  
no surfacing water  
2" pipe

## Profile Evert's Continued

7.40

483 12.33

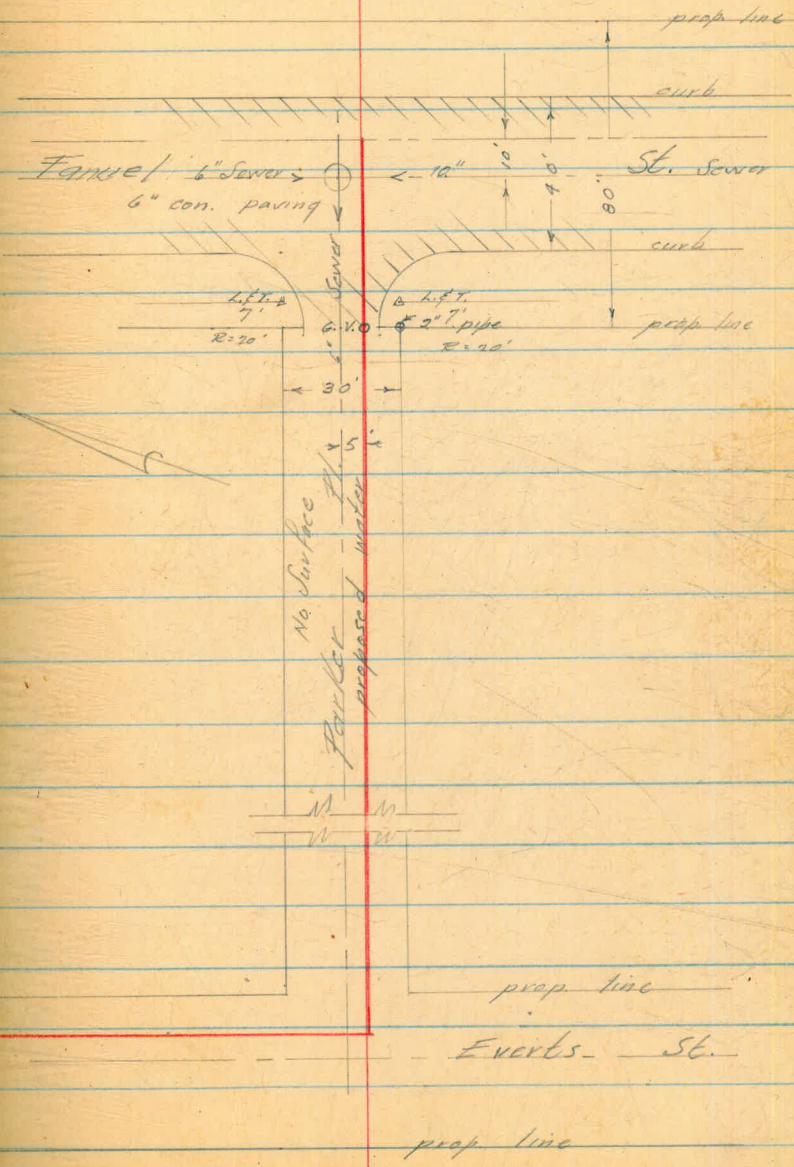
N.W. B.P. Pacific Beach Dr. E Everts

0+00	2.6	9.7
+10	4.1	8.2
+30	4.5	7.8
+50	5.1	7.2
+60	5.2	7.1
1+00	4.8	7.5
+50	6.0	6.3
2+00	7.4	4.9
+20	8.0	4.3

Profile of Water on Parker Pl.  
 Everts St to Fanuel

WEST 26  
 Kemp  
 Karantalis 6-22-54

- 0+00 E. prop. line of Fanuel
- +20 E. curb line
- +40 E. street, & Sewer M.H. 5' dia
- +60 W. curb line
- +80 W. prop. line



- 5+80 E. prop. line Everts
- 5+90 proposed water on Everts
- 6+20 W. prop. line Everts

prop. line  
 Everts St.  
 prop. line

## Profile of Parker Pl. Cont.

		7.40	
4.83	12.23		
6+20		8.1	4.1
6+00		7.6	4.6
T.P.		7.32	4.91
6.58	11.99		
5+50		6.5	5.0
5+00		5.9	5.6
4+50		5.1	6.4
4+00		4.6	6.9
3+50		3.6	7.9
3+00		2.9	8.6
2+50		2.2	9.3
2+00		1.5	10.0
1+50		0.4	11.1
T.P.		0.38	11.11
1.71	12.82		

N.W. B.P. Pacific Beach Dr. &amp; Everts

W prop line of Everts

Parker Pl Everts to

Fannuel Cont.

12.82

1+00	1.8	11.0
0+80	1.9	10.9
0+60	3.0	9.8
0+40	2.22	10.6
0+20	2.5	10.3
0+00	1.2	11.6
T.P.	7.85	4.97

End 6" paving & W prop. of Fannuel.  
 W curb line Fannuel  
 Sewer M.H. East rim, 10.5 to T.L.  
 E curb line Top curb 1.8  
 East prop line Fannuel.

7.36 12.33

4.91	7.42
	7.90

B.P. Pac. Beach & Everts

Profile of Water on Hornblend St  
Figuerod to Pico

	45.10	
2.30	47.40 ✓	
	8.43	38.97 ✓
2.43	41.40 ✓	
	12.87	28.53 ✓
0.63	29.16 ✓	
	13.09	16.07 ✓
0.45	16.52 ✓	
	9.33	7.19 ✓
3.93	11.12 ✓	
	4.85	6.27 ✓
3.72	9.99 ✓	
	4.66	5.33 ✓
4.06	9.39 ✓	
	5.19	4.20 ✓
3.39	7.59 ✓	
	3.46	4.13 ✓
5.50	9.63 ✓	

NW B.P. Olney & Garnet

Set T.B.M. Spike in Tele. Pole E/L Pico, 150' So.

Wert  
Kemp  
Holahan

2-23-54

29



## Profile of Hornblend Cont.

9.63-

4.68 4.95 ✓

4.79 9.74 ✓

0+00	3.7	6.04 ✓
+50	4.1	5.64 ✓
+85	4.1	5.64 ✓
1+00	4.6	5.14 ✓
+50	4.1	5.64 ✓
2+00	5.2	4.54 ✓
+50	5.0	4.74 ✓
3+00	5.3	4.44 ✓
+50	5.6	4.14 ✓
4+00	6.0	3.74 ✓
+50	6.0	3.74 ✓
T.P.	6.68	3.06 ✓

5.03 8.09 ✓

4+93	5.4	2.69 ✓
5+00	5.4	2.69 ✓
+53	5.4	2.69 ✓

Set T.B.M. SW. cor. men. SW. cor. Figures of  
Hornblend

E/L of Figures

W/L of Figures

E/L of Bond St.

W/L " " "

## Profile of Horn Island Canal

8.09

6+00	5.2	2.89 ✓
+50	5.9	2.19 ✓
7+00	4.7	3.39 ✓
+50	4.3	3.79 ✓
8+00	3.9	4.19 ✓
+50	3.7	4.39 ✓
T.P.	3.56	4.53 ✓

4.81 9.34 ✓

9+00	4.8	4.54 ✓
+50	4.7	4.64 ✓
10+00	5.0	4.34 ✓
+50	5.3	4.04 ✓
11+00	5.4	3.94 ✓
+37	6.8	2.54 ✓
+50	9.8 -	.46 ✓
+97	9.9 -	.56 ✓
12+03	14.1 -	4.76 ✓
12+17	14.2 -	4.86 ✓

Top of dirt bank

Top " " "

Edge of Slough

Bottom " "

W/L of Pico St.

## Profile of Hornblend Cont.

9.34<sup>1</sup>

T.P.

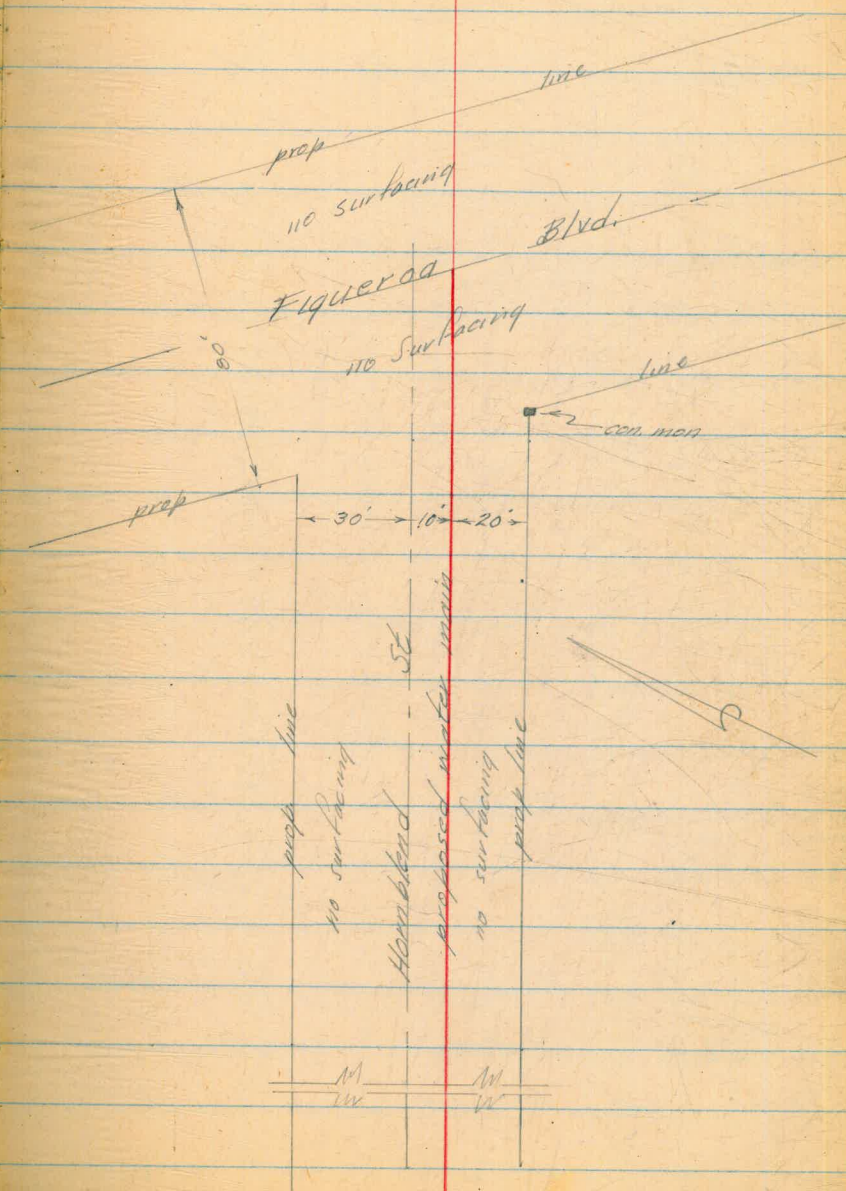
4.02 5.32<sup>1</sup> ✓9.47 9.72<sup>1</sup> ✓3.55 6.24<sup>1</sup> ✓4.61 10.85<sup>1</sup> ✓4.32 6.53<sup>1</sup> ✓6.36 12.89<sup>1</sup> ✓0.95 12.44<sup>1</sup> ✓11.77 24.21<sup>1</sup> ✓0.26 23.95<sup>1</sup> ✓11.44 35.39<sup>1</sup> ✓0.75 34.64<sup>1</sup> ✓9.95 44.09<sup>1</sup> ✓1.75 42.34<sup>1</sup> ✓5.02 47.36<sup>1</sup> ✓2.37 44.99<sup>1</sup> ✓

45.10

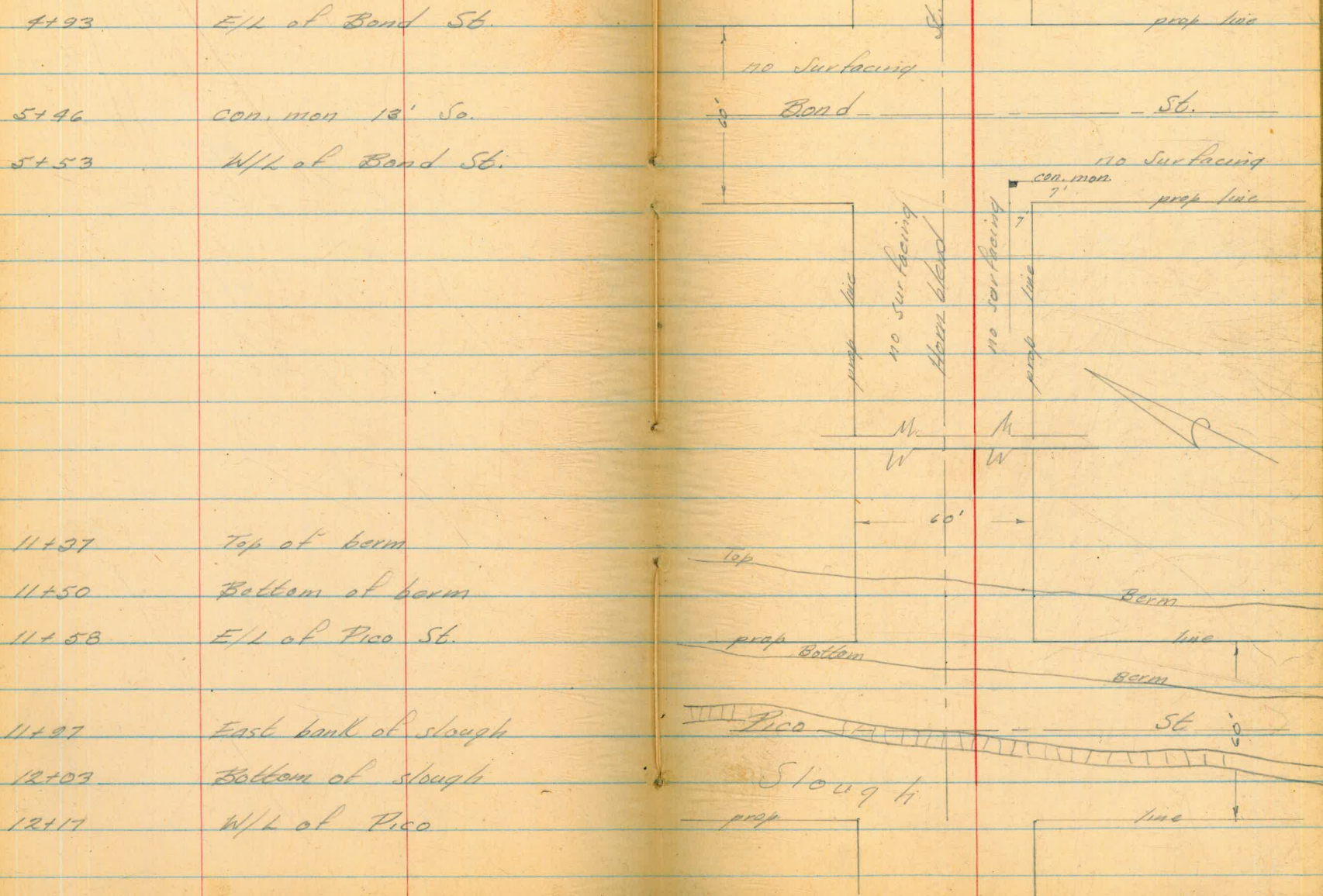
B.P. Garnet &amp; Olivine

Profile of Hornblend Cont.

- 0+00 E/L of Figueroa Blvd.
- 0+80 P.L. So. prop of Hornblend E  
W prop of Figueroa (con. man)
- 0+85 W/L of Figueroa Blvd.

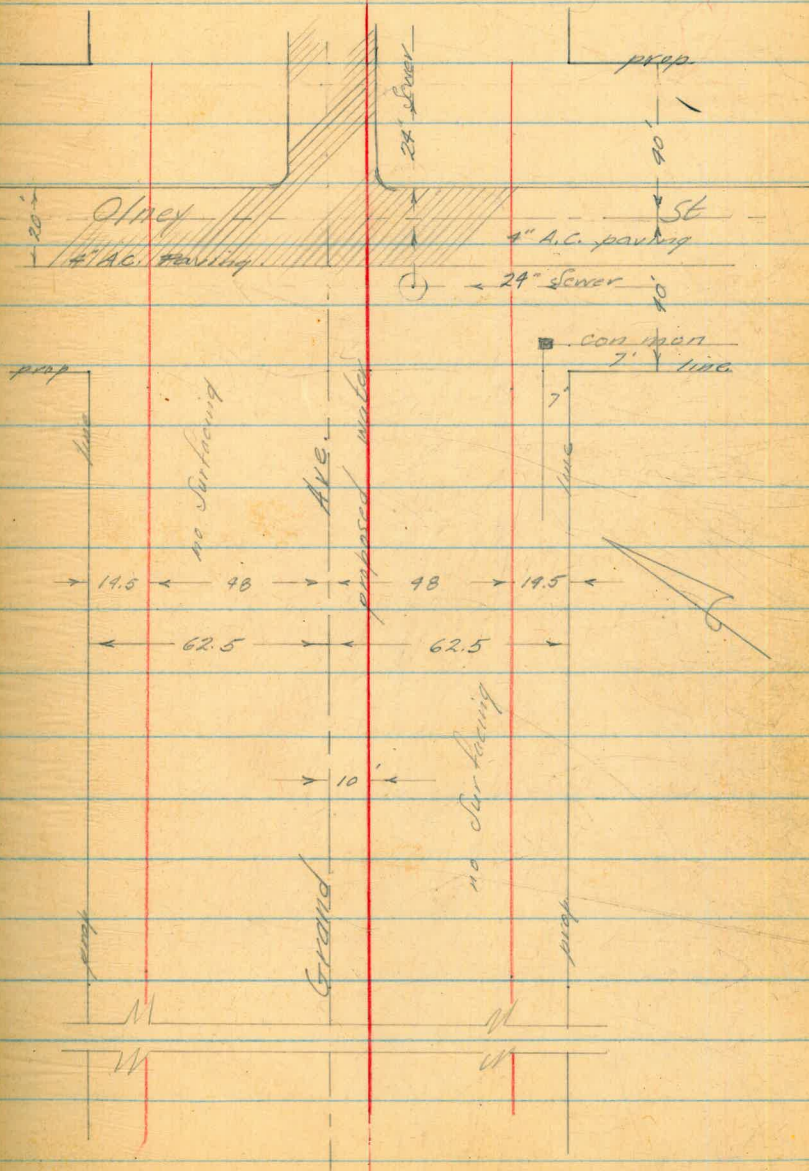


## Profile Horn blend Cont.



Profile of Proposed Water  
Grand Ave., Olney St to Lament St.

12+38.02	
0100	E/H of Olney St.
+40	F of Olney St.
+52	Wedge 4" A.C. paving
+58	Sewer M.H. 20' H.
+73	Cen. man. 45.5 H.
11+58.02	
+80	W/H of Olney St.



Profile Grand Ave Cont.

6+58.57  
5+72.45

E/L of Noyes

5+78.57  
6+59.45

W/L of Noyes

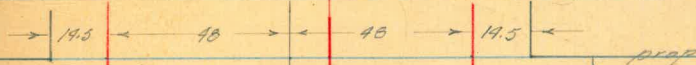
1+80.02  
10+58

E edge 3" AG parkway

0+80  
11+58.02  
0+78.02  
11+60

E/L of Merrill St

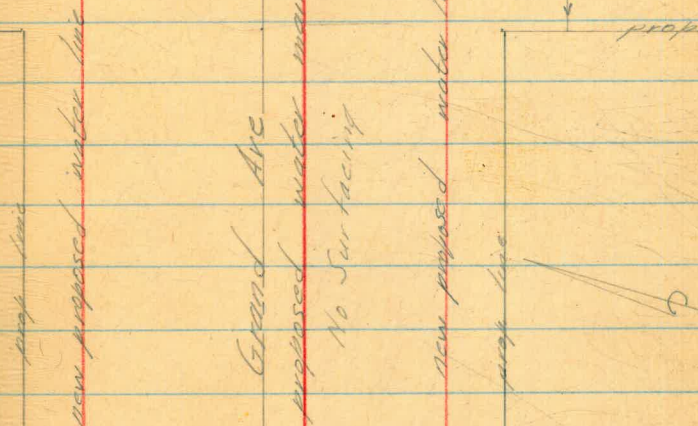
W. edge 3" AG parkway



Noyes

80 St

No Surface



62.5

62.5

10'

M

M

W

W

original

prop line

Merrill

St

## Profile Grand Ave. Cont

0+00  
12+38.02

W/L o P Merrell

17+37.82 F/L of Lamont

17+57.82 E. curb line

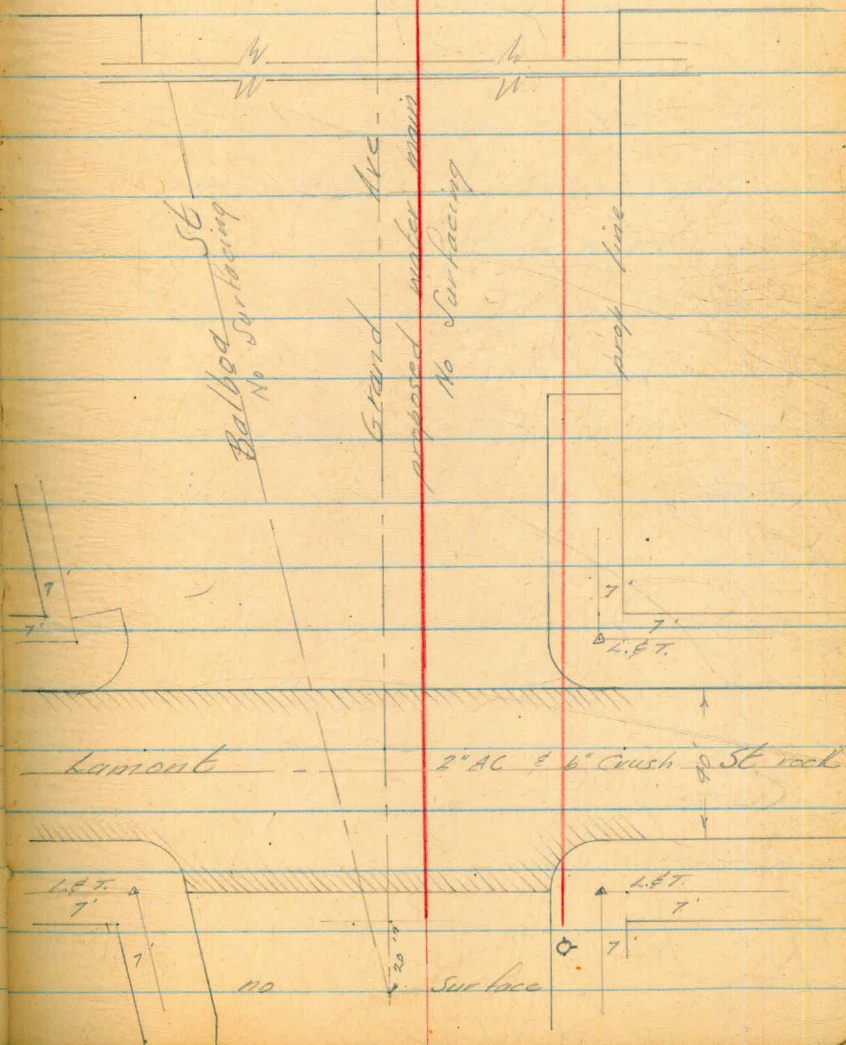
17+97.82 W. curb line

18+17.82 W/L o P Lamont

18+20 F.H.

Merrell

St.





Profile Grand Ave, Lamont

to Olney St

		45.10
0.72	45.82	
		8.57 37.25
2.11	39.66	
		9.60 30.06
6.06	36.12	
0+00		8.8
+32		7.9
+52		7.6
+58		7.91 28.21
+58		7.4

BB NW cor Canal & Olney

5/11 Olney

W edge 9" A.G. paving

Sewer M.H. 22' 16" 15' to flow line

Profile & Proposed Water  
Grand Ave., Olney to School Prop.

11+58.02

0+00

W/L of Olney St

0+22

24" Sewer M.H. 15' H.

0+26

Edge 4" A.C. paving

0+52

" " " "

12+38.02

0+80

E/L of Olney St.

1+84 13+42

Power Pole 16' off prop.

3+04 14+62

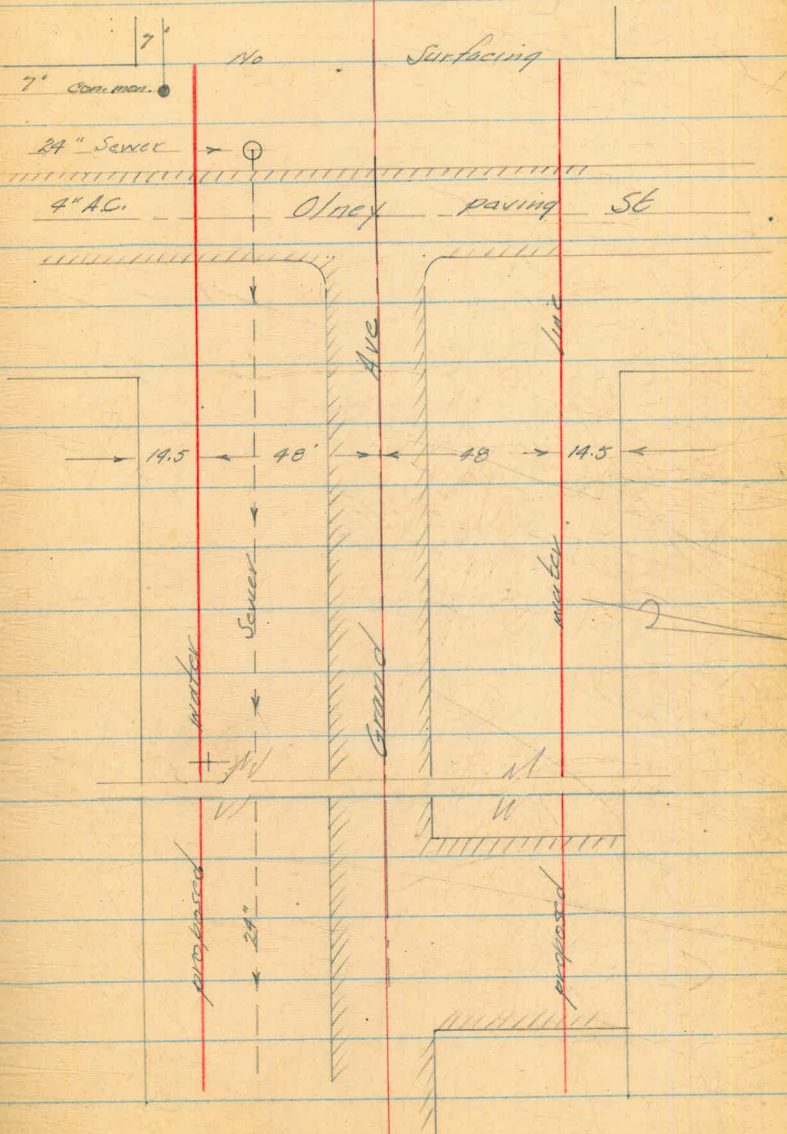
Edge 4" A.C. Drive

3+54 15+12

Edge 4" A.C. Drive

Went  
Kemp  
Holahan 7-2-54

39



4+84 16+42

12" Tree 16' off prop.

5+44 17+02

8" Tree 16' off prop.

6+04 17+62

Sewer M.H. 15' 16.

6+09 17+67

Edge of 4" AC. drive

6+33 17+91

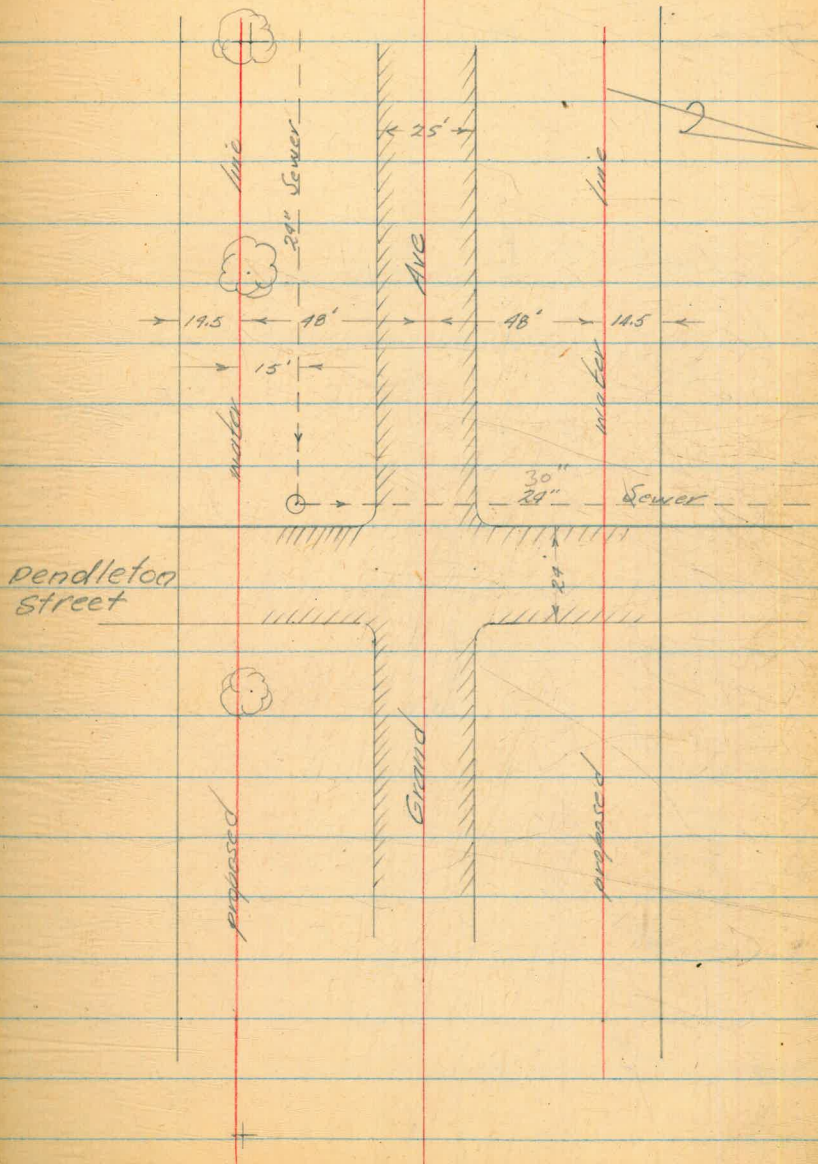
" " " " "

6+54 18+12

10" Tree 16' off prop.

7+69 19+27

Power Pole 16' off prop.



7+69 19+27

Power Pole

9+16 20+74

& corr. drain ditch  
36" corr. pipe under road

10+54 22+12

A Tree

11+74 23+32

10" Sewer

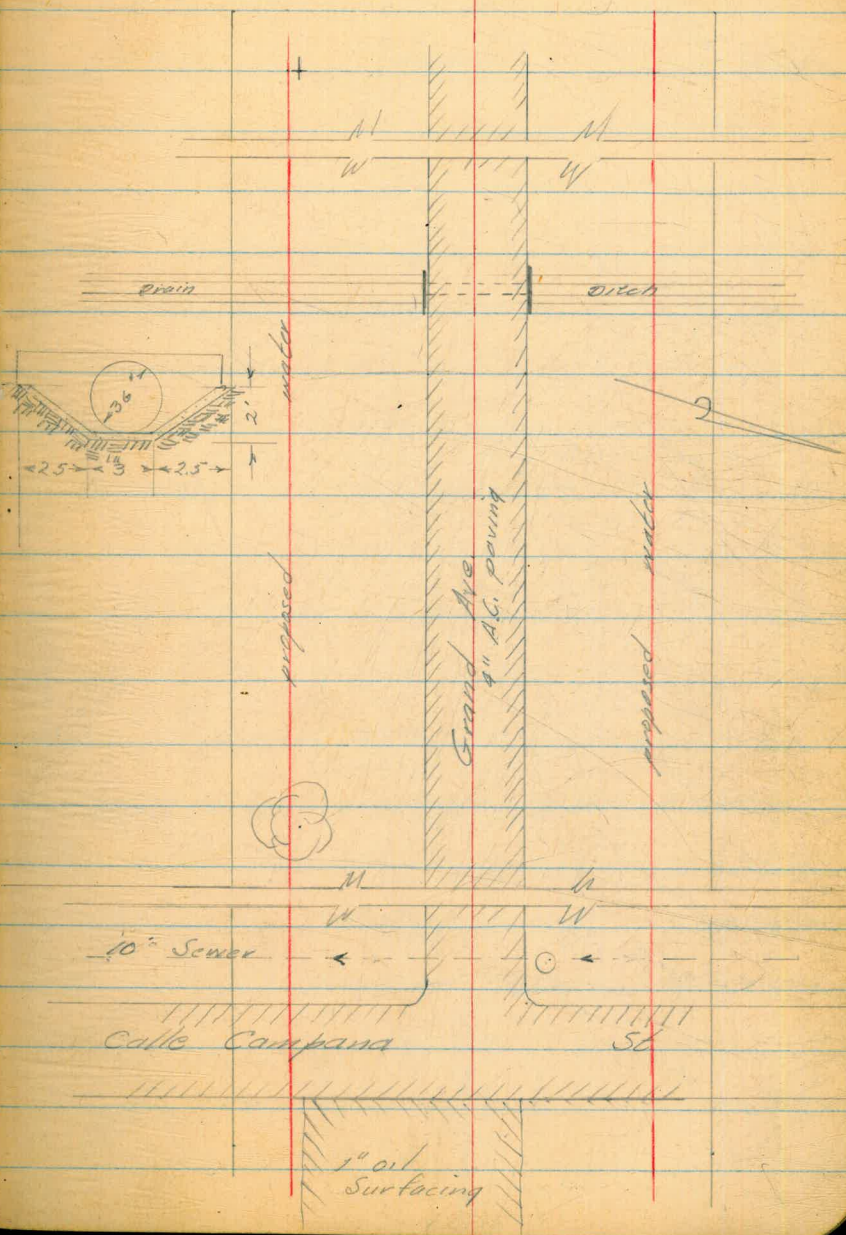
7.8 to Flow

11+86 23+44

Wedge 9" A.G.

12+10 23+68

7" " "



12+10 23+68

12+69 24+27

12" Cypress Tree 2' Lt.

13+29 24+87

Power Pole 2' Lt.

13+64 25+22

Power pole 2' Lt.

14+90 26+98

W. gutter

15+30 26+88

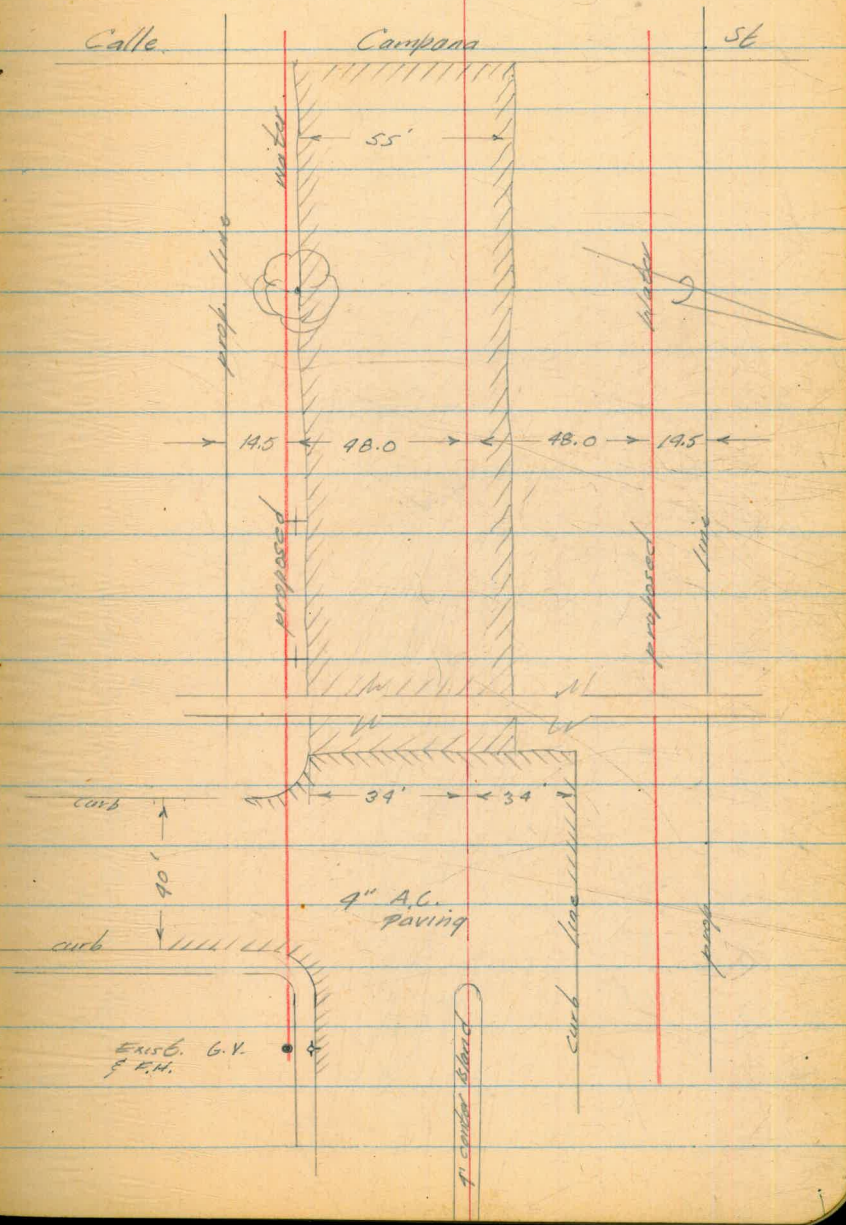
E. gutter

15+90 26+98

Back sidewalk

15+57 27+15

Existing G.V. & F.H.



Profile of Grand Ave  
Olney St. East to School

		28.21	
1.95	30.16		
0+00	11+58		
+22		rim	1.95
+24	11+72		
+40	11+98		
+52	12+10		
1+04	12+62		
+54	13+12		
2+04	13+62		
+54	14+12		
3+04	14+62		
+54	15+12		
4+04	15+62		
T.P		9.08	21.08
2.08	23.16		

Sewer M.H. Olney & Grand

North line	So. line	
+0.6	0.3	
0.0	2.5	Sewer M.H. 15' to T.I.
+0.3	2.6	Wedge A.C., 4"
+0.1	3.3	& Olney St.
+0.4	2.8	E. edge A.C., 4"
0.5	4.1	
1.6	4.5	
2.9	5.3	
3.7	6.2	
5.5	7.7	Wedge parking lot N. line
6.3	8.8	S. " " " "
7.7	10.2	

Profile of Grand Cont.

23.16

4+54 16+12

5+04 16+62

+54 17+12

6+04 17+62

7+09 17+67

+33 17+91

+54 18+12

7+04 18+62

+54 19+12

T.P. 10.98 12.68

1.07 13.75

8+04 19+62

+54 20+12

9+04 20+62

T.P. 3.58 10.17

0.69 10.86

9+16 20+74

No. line Saline

1.5 21.7 19.3

2.7 20.5 18.6

4.4 18.8 17.1

5.3 17.9 16.2

5.5 17.7 16.2

6.1 17.1 15.2

6.6 16.6 14.3

8.0 15.2 12.4

9.3 13.9 11.5

12.7 10.4

1.1 3.4

2.5 11.3 9.2

2.8 11.0 8.1

5.7

4.1 6.8 5.0

5.9 fl. Storm Ditch

Sewer M.H. 25 left.

W. edge 4" drive

E " " "

## Profile of Grand Cent.

		10.86	
9+59	21+12		
10+04	21+62		
11+04	22+12		
11+04	22+62		
11+54	23+12		
12+04	23+32	rim 9.78	
12+04	23+44		
12+04	23+62		
12+10	23+68		
12+54	24+12		
13+04	24+62		
13+54	25+12		
T.P.		6.91	4.45
14+04	25+62	5.69	10.14
14+54	26+12		
14+90	26+48		

No. line	Set line	
1.9	9.0	6.6
2.7	8.2	4.3
3.8	7.1	4.9
4.3	6.6	6.0
4.7	6.2	5.2
4.9	6.0	5.7
5.3	5.6	6.3
5.5	5.4	4.6
5.3	5.6	6.3
5.4	5.5	4.6
5.7	5.2	6.3
6.0	4.9	4.6
		4.5
		6.4
		4.6
		6.3
		4.5
		6.4
		4.7
		6.2
		4.7
		7.2
		3.7
		7.5
		3.4
		7.5
		3.4
		6.4
		3.7
		6.3
		3.8
		4.4
		5.7
		W. gutter line

-6.08-

Sewer MH. 7.5 to fl.

W. edge of 4" AC. Cattle Compens.

E. edge 9" AC. Cattle Compens.



Profile of Grand Canal

		10.14
15+04	26+62	
+ 30	26+88	
+ 40	26+98	
+ 57	27+15	
		2.83 7.31

46

Normal	Saline
4.8	5.3
	4.6
	5.5
	4.3
	5.8
	E. gutter line
5.0	5.1
	Back edge sidewalk
4.5	5.6
	5.4
	Existing G.P.
F.H. TBM.	El. 7.31

NOTE: #  
 For continuation  
 refer to page 55.

Revised Profile of Grand Ave  
Olney St to Lament St.

		28.21
	10.05	38.26
12+38.02		
0+00	12+10.02	
+28		
+40	11+94	
+52	11+86.02	
+58	11+80.02	
+58		10.05 28.2
+73	11+58.02	
1+00	11+38.02	
+50	10+88	
2+00	10+38	
+50	9+88	
3+00	9+38	
+50	8+88	
T.P.		3.79 34.47
	9.33	43.80

Wert  
Kemp  
Holahan  
47  
6-7-54

T.B.M. Rim Sewer M.H. Olney & Grand

No. line	So. line	
		26.3
8.2	30.1	12.0 E/H of Olney
7.7	30.6	10.9 27.4 E edge 4" A.C. Olney St
8.3	30.0	11.4 26.9 E 4" A.C. Olney
7.6	30.7	10.6 27.5 W edge A.C. Olney
7.1	31.2	10.7 27.6 Sewer Crossing
		Sewer M.H. 15' H, cut 15' to ft.
		W/H Olney
7.7	30.6	9.2 29.1
7.8	30.5	8.8 29.5
6.9	31.4	9.2 29.1
6.2	32.1	9.2 30.1
5.2	33.1	5.4 32.9
4.0	34.3	4.0 34.3
2.9	35.4	4.4 33.9

## Profile Grand Cont.

	93.80		
9+00 8+38			
+50 7+88			
5+00 7+38			
+50 6+88			
6+00 6+38			
+50			
7+00			
+50			
8+00			
+50			
T.P.	6.28	37.52	
	9.37	46.89	
9+00			
+50			
10+00			
+50			
+58			1480.02
11+00			

6" A.C.	8" A.C.
No.	So.
8.4 35.4	10.5 33.3
8.0 35.8	9.6 34.2
8.0 35.8	9.0 34.8
7.7 36.4	8.4 35.4
5.3 38.5	9.0 34.8
4.3 39.5	8.6 35.2
5.3 38.5	9.3 34.5
5.1 38.4	9.4 34.4
6.0 37.8	8.7 35.1
4.2 39.6	7.5 36.3
6.9 40.0	10.0 36.9
6.4 40.5	9.9 37.0
4.2 42.7	9.0 37.9
3.9 43.5	7.7 39.5
	7.1 39.8
4.5 42.4	6.7 40.2
	E. edge of 3" A.C. park way

## Profile of Grand Cont

	46.89		No.	So.
11+50			3.9 <sup>43.0</sup>	6.4 <sup>40.5</sup>
+60	0+78.02			6.9 <sup>40.5</sup>
+70	0+68.02		4.1 <sup>42.8</sup>	8.2 <sup>38.7</sup>
+71	0+67.02		4.7 <sup>42.2</sup>	
12+00	0+38		4.6 <sup>42.3</sup>	8.4 <sup>38.5</sup>
+17	0+21		5.0 <sup>41.9</sup>	
+17	0+21		3.3 <sup>43.6</sup>	
+50			3.2 <sup>43.7</sup>	6.6 <sup>40.3</sup>
T.P.		3.36 43.53		
	7.19	50.72		
13+00			6.5	7.7
+50			6.1	7.8
14+00			5.5	6.9
+50			5.1	6.2
15+00			4.5	6.0
+50			4.1	4.9
16+00			3.9	4.2

W. edge 3" AC. parkway

## Profile of Grand

			No.	So.	
	50.72		2.8	3.5	
16+50					
T.P.		3.51	47.21		
	5.55	52.76			
16+90				5.4	E. con walk
17+00				5.3	
17+57.82				4.8	Top curb
				5.3	gutter
17+77.82				4.7	& Lamont
+97.82				4.7	gutter
				4.0	Top curb
				3.9	back sidewalk
				3.8	opposite F.H.
	2.42	50.34			
		50.37			
			R.P. NW. cor Lamont & Grand		

University Ave  
 Pershing Ave University  
 to Grades

STA.	+ HI		
B.M.	7.06	345.07	338.01
T.P.	7.79	343.74	9.12 335.95
0+12.5			9.7 334.0 329.4
+50			8.2 335.5 330.9
1+00			6.3 337.4 333.0
1+48 A.H.			4.3 339.4 333.5
1+95			3.2 340.5 334.0
2+03.85 X			3.3 340.4 334.1
+50			4.0 339.7 334.6
T.P.	3.67	343.02	4.39 339.35
3+00			4.0 339.0 335.0
+50			4.3 338.7 334.8
4+00			5.0 338.0 334.5
+50			5.1 337.9 334.4
+92			4.5 338.5 334.6
+92			3.8 339.2
5+00			4.3 338.7 334.7
+50			3.7 339.3 335.0
6+00			3.3 339.7 335.4
+50			3.0 340.0 335.8
7+00			2.7 340.3 336.2

West  
 Williams  
 Varonakis X  
 Kellhofer &

9/7/54  
 HOT

51

BM SWBP Wightman & Pershing

C4  $\frac{6}{6}$   
 C4  $\frac{6}{6}$   
 C4  $\frac{4}{4}$   
 C5  $\frac{9}{9}$   
 C6  $\frac{5}{3}$  F.H. TEE  
 C6  
 C5  $\frac{1}{1}$   
 C4  $\frac{0}{0}$   
 C3  $\frac{9}{9}$   
 C3  $\frac{5}{5}$   
 C3  $\frac{5}{5}$   
 C3  $\frac{9}{9}$  F.H. TEE  
 C0  $\frac{0}{0}$  (4) F.H.  
 C4  $\frac{0}{0}$   
 C4  $\frac{3}{3}$   
 C4  $\frac{3}{3}$   
 C4  $\frac{2}{2}$   
 C4  $\frac{1}{1}$

PERSHING CONT.

STA	+ HI	- EL		
	343.02			
7+50		2.4	340.6	336.6
T.P.				
8+00	3.83	344.59	2.26	340.76
				337.0
+50		4.1	340.5	336.6
9+00		4.5	340.1	336.2
+50		4.8	339.8	335.8
10+00		5.2	339.4	335.4
+50		5.6	339.0	335.1
11+00		5.9	338.7	334.6
+50		6.5	338.1	334.2
T.P.	5.03	344.49	5.13	339.46
CHECK				
B.M.		6.47	338.02	= 338.01

WEST  
WILLIAMS  
VARONFAKIS  
KELLHOFER

52

9/7/54

C4  $\frac{0}{8}$   
C3  $\frac{9}{9}$   
C3  $\frac{9}{9}$   
C3  $\frac{0}{9}$   
C4  $\frac{0}{9}$   
C4  $\frac{1}{9}$   
C4  $\frac{1}{9}$   
C3  $\frac{9}{9}$

Marine View Ave  
41st to Division

West  
Williams, T  
Varonakis +  
Kullhofer

53

10/22/54

	983.	67.17	57.34	
0+60			4.5	62.7 59.0
1+00			2.8	64.4 60.5
1+15 S			1.7	65.5 65.7
1+50	684	73.59	0.42	66.75 62.5
2+00			6.2	67.4 62.5
2+05 N			6.2	67.4 67.3
2+50			5.7	67.9 63.6
2+50 N			5.3	68.3 68.0
3+00			4.9	68.7 64.7
3+29 <sup>93</sup> A			5.1	68.5 64.8
3+40			4.9	68.7 64.9
3+40			5.7	67.9 68.7
3+50			4.6	69.0 65.0
3+98 W			3.6	70.0 70.3
4+00			4.2	69.4 65.2
4+3 W			2.7	70.9 71.0
4+50			3.5	70.1 66.1
4+83 W			2.0	71.6 71.7

NW 80 41st + Division

1  
C3 Begin work

2  
C3

3  
F0

4  
C4

5  
C4

6  
C0

7  
C4

8  
C0

9  
C4

10  
C4

11  
C3

12  
C3

13  
F0

14  
C4

15  
F0

16  
C4

17  
F0

18  
C4

19  
F0

20  
C4

21  
F0

22  
C4

23  
F0

24  
C4

25  
F0

26  
C4

27  
F0

28  
C4

29  
F0

30  
C4

31  
F0

32  
C4

33  
F0

34  
C4

35  
F0

36  
C4

37  
F0

38  
C4

39  
F0

40  
C4

41  
F0

42  
C4

43  
F0

44  
C4

45  
F0

46  
C4

47  
F0

48  
C4

49  
F0

50  
C4

51  
F0

52  
C4

53  
F0

54  
C4

55  
F0

56  
C4

57  
F0

58  
C4

59  
F0

60  
C4

61  
F0

62  
C4

63  
F0

64  
C4

65  
F0

66  
C4

67  
F0

68  
C4

69  
F0

70  
C4

71  
F0

72  
C4

73  
F0

74  
C4

75  
F0

76  
C4

77  
F0

78  
C4

79  
F0

80  
C4

81  
F0

82  
C4

83  
F0

84  
C4

85  
F0

86  
C4

87  
F0

88  
C4

89  
F0

90  
C4

91  
F0

92  
C4

93  
F0

94  
C4

95  
F0

96  
C4

97  
F0

98  
C4

99  
F0

100  
C4

101  
F0

102  
C4

103  
F0

104  
C4

105  
F0

106  
C4

107  
F0

108  
C4

109  
F0

110  
C4

111  
F0

112  
C4

113  
F0

114  
C4

115  
F0

116  
C4

117  
F0

118  
C4

119  
F0

120  
C4

121  
F0

122  
C4

123  
F0

124  
C4

125  
F0

126  
C4

127  
F0

128  
C4

129  
F0

130  
C4

131  
F0

132  
C4

133  
F0

134  
C4

135  
F0

136  
C4

137  
F0

138  
C4

139  
F0

140  
C4

141  
F0

142  
C4

143  
F0

144  
C4

145  
F0

146  
C4

147  
F0

148  
C4

149  
F0

150  
C4

151  
F0

152  
C4

153  
F0

154  
C4

155  
F0

156  
C4

157  
F0

158  
C4

159  
F0

160  
C4

161  
F0

162  
C4

163  
F0

164  
C4

165  
F0

166  
C4

167  
F0

168  
C4

169  
F0

170  
C4

171  
F0

172  
C4

173  
F0

174  
C4

175  
F0

176  
C4

177  
F0

178  
C4

179  
F0

180  
C4

181  
F0

182  
C4

183  
F0

184  
C4

185  
F0

186  
C4

187  
F0

188  
C4

189  
F0

190  
C4

191  
F0

192  
C4

193  
F0

194  
C4

195  
F0

196  
C4

197  
F0

198  
C4

199  
F0

200  
C4

201  
F0

202  
C4

203  
F0

204  
C4

205  
F0

206  
C4

207  
F0

208  
C4

209  
F0

210  
C4

211  
F0

212  
C4

213  
F0

214  
C4

215  
F0

216  
C4

217  
F0

218  
C4

219  
F0

220  
C4

221  
F0

222  
C4

223  
F0

224  
C4

225  
F0

226  
C4

227  
F0

228  
C4

229  
F0

230  
C4

231  
F0

232  
C4

233  
F0

234  
C4

235  
F0

236  
C4

237  
F0

238  
C4

239  
F0

240  
C4

241  
F0

242  
C4

243  
F0

244  
C4

245  
F0

246  
C4

247  
F0

248  
C4

249  
F0

250  
C4

251  
F0

252  
C4

253  
F0

254  
C4

255  
F0

256  
C4

257  
F0

258  
C4

259  
F0

260  
C4

261  
F0

262  
C4

263  
F0

264  
C4

265  
F0

266  
C4

267  
F0

268  
C4

269  
F0

270  
C4

271  
F0

272  
C4

273  
F0

274  
C4

275  
F0

276  
C4

277  
F0

278  
C4

279  
F0

280  
C4

281  
F0

282  
C4

283  
F0

284  
C4

285  
F0

286  
C4

287  
F0

288  
C4

289  
F0

290  
C4

291  
F0

292  
C4

293  
F0

294  
C4

295  
F0

296  
C4

297  
F0

298  
C4

299  
F0

300  
C4

301  
F0

302  
C4

303  
F0

304  
C4

305  
F0

306  
C4

307  
F0

308  
C4

309  
F0

310  
C4

311  
F0

312  
C4

313  
F0

314  
C4

315  
F0

316  
C4

317  
F0

318  
C4

319  
F0

320  
C4

321  
F0

322  
C4

323  
F0

324  
C4

325  
F0

326  
C4

327  
F0

328  
C4

329  
F0

330  
C4

331  
F0

332  
C4

333  
F0

334  
C4

335  
F0

336  
C4

337  
F0

338  
C4

339  
F0

340  
C4

341  
F0

342  
C4

343  
F0

344  
C4

345  
F0

346  
C4

347  
F0

348  
C4

349  
F0

350  
C4

351  
F0

352  
C4

353  
F0

354  
C4

355  
F0

356  
C4

357  
F0

358  
C4

359  
F0

360  
C4

361  
F0

362  
C4

363  
F0

364  
C4

365  
F0

366  
C4

367  
F0

368  
C4

369  
F0

370  
C4

371  
F0

372  
C4

373  
F0

374  
C4

375  
F0

376  
C4

377  
F0

378  
C4

379  
F0

380  
C4

381  
F0

382  
C4

383  
F0

384  
C4

385  
F0

386  
C4

387  
F0

388  
C4

389  
F0

390  
C4

391  
F0

392  
C4

393  
F0

394  
C4

395  
F0

396  
C4

397  
F0

398  
C4

399  
F0

400  
C4

401  
F0

402  
C4

403  
F0

404  
C4

405  
F0

406  
C4

407  
F0

408  
C4

409  
F0

410  
C4

411  
F0

412  
C4

413  
F0

414  
C4

415  
F0

416  
C4

417  
F0

418  
C4

419  
F0

420  
C4

421  
F0

422  
C4

423  
F0

424  
C4

425  
F0

426  
C4

427  
F0

428  
C4

429  
F0

430  
C4

431  
F0

432  
C4

433  
F0

434  
C4

435  
F0

436  
C4

437  
F0

438  
C4

439  
F0

440  
C4

441  
F0

442  
C4

443  
F0

444  
C4

445  
F0

446  
C4

447  
F0

448  
C4

449  
F0

450  
C4

451  
F0

452  
C4

453  
F0

454  
C4

455  
F0

456  
C4

457  
F0

458  
C4

459  
F0

460  
C4

461  
F0

462  
C4

463  
F0

464  
C4

465  
F0

466  
C4

467  
F0

468  
C4

469  
F0

470  
C4

471  
F0

472  
C4

473  
F0

474  
C4

475  
F0

476  
C4

477  
F0

478  
C4

479  
F0

480  
C4

481  
F0

482  
C4

483  
F0

484  
C4

485  
F0

486  
C4

487  
F0

488  
C4

489  
F0

490  
C4

491  
F0

492  
C4

493  
F0

494  
C4

495  
F0

496  
C4

497  
F0

498  
C4

499  
F0

500  
C4

501  
F0

502  
C4

503  
F0

504  
C4

505  
F0

506  
C4

507  
F0

508  
C4

509  
F0

510  
C4

511  
F0

512  
C4

513  
F0

514  
C4

515  
F0

516  
C4

517  
F0

518  
C4

519  
F0

520  
C4

521  
F0

522  
C4

523  
F0

524  
C4

525  
F0

526  
C4

527  
F0

528  
C4

529  
F0

530  
C4

531  
F0

532  
C4

533  
F0

534  
C4

535  
F0

536  
C4

537  
F0

538  
C4

539  
F0

540  
C4

541  
F0

542  
C4

543  
F0

544  
C4

545  
F0

546  
C4

547  
F0

548  
C4

549  
F0

550  
C4

551  
F0

552  
C4

553  
F0

554  
C4

555  
F0

556  
C4

557  
F0

558  
C4

559  
F0

560  
C4

561  
F0

562  
C4

563  
F0

564  
C4

565  
F0

566  
C4

567  
F0

568  
C4

569  
F0

570  
C4

571  
F0

572  
C4

573  
F0

574  
C4

575  
F0

576  
C4

577  
F0

578  
C4

579  
F0

580  
C4

581  
F0

582  
C4

583  
F0

584  
C4

585  
F0

586  
C4

587  
F0

588  
C4

589  
F0

590  
C4

591  
F0

592  
C4

593  
F0

594  
C4

595  
F0

596  
C4

597  
F0

598  
C4

599  
F0

600  
C4

601  
F0

602  
C4

603  
F0

604  
C4

605  
F0

606  
C4

607  
F0

608  
C4

609  
F0

610  
C4

611  
F0

612  
C4

613  
F0

614  
C4

615  
F0

616  
C4

617  
F0

618  
C4

619  
F0

620  
C4

621  
F0

622  
C4

623  
F0

624  
C4

625  
F0

626  
C4

627  
F0

628  
C4

629  
F0

630  
C4

631  
F0

632  
C4

633  
F0

634  
C4

635  
F0

636  
C4

637  
F0

638  
C4

639  
F0

640  
C4

641  
F0

642  
C4

643  
F0

644  
C4

645  
F0

646  
C4

647  
F0

648  
C4

649  
F0

650  
C4

651  
F0

652  
C4

653  
F0

654  
C4

655  
F0

656  
C4

657  
F0

658  
C4

659  
F0

660  
C4

661  
F0

662  
C4

663  
F0

664  
C4

665  
F0

666  
C4

667  
F0

668  
C4

669  
F0

670  
C4

671  
F0

672  
C4

673  
F0

674  
C4

675  
F0

676  
C4

677  
F0

678  
C4

679  
F0

680  
C4

681  
F0

682  
C4

683  
F0

684  
C4

685  
F0

686  
C4

687  
F0

688  
C4

689  
F0

690  
C4

691  
F0

692  
C4

693  
F0

694  
C4

695  
F0

696  
C4

697  
F0

698  
C4

699  
F0

700  
C4

701  
F0

702  
C4

703  
F0

704  
C4

705  
F0

706  
C4

707  
F0

708  
C4

709  
F0

710  
C4

711  
F0

712  
C4

713  
F0

714  
C4

715  
F0

716  
C4

717  
F0

718  
C4

719  
F0

720  
C4

721  
F0

722  
C4

723  
F0

724  
C4

725  
F0

726  
C4

727  
F0

728  
C4

729  
F0

730  
C4

731  
F0

732  
C4

733  
F0

734  
C4

735  
F0

736  
C4

737  
F0

738  
C4

739  
F0

740  
C4

741  
F0

742  
C4

743  
F0

744  
C4

745  
F0

746  
C4

747  
F0

748  
C4

749  
F0

750  
C4

751  
F0

752  
C4

753  
F0

754  
C4

755  
F0

756  
C4

757  
F0

758  
C4

759  
F0

760  
C4

761  
F0

762  
C4

763  
F0

764  
C4

765  
F0

766  
C4

767  
F0

768  
C4

769  
F0

770  
C4

771  
F0

772  
C4

773  
F0

774  
C4

775  
F0

776  
C4

777  
F0

778  
C4

779  
F0

780  
C4

781  
F0

782  
C4

783  
F0

784  
C4

785  
F0

786  
C4

787  
F0

788  
C4

789  
F0

790  
C4

791  
F0

792  
C4

793  
F0

794  
C4

795  
F0

796  
C4

797  
F0

798  
C4

799  
F0

800  
C4

801  
F0

802  
C4

803  
F0

804  
C4

805  
F0

806  
C4

807  
F0

808  
C4

809  
F0

810  
C4

811  
F0

812  
C4

813  
F0

814  
C4

815  
F0

816  
C4

817  
F0

818  
C4

819  
F0

820  
C4

821  
F0

822  
C4

823  
F0

824  
C4

825  
F0

826  
C4

827  
F0

828  
C4

829  
F0

830  
C4

831  
F0

832  
C4

833  
F0

834  
C4

835  
F0

836  
C4

837  
F0

838  
C4

839  
F0

840  
C4

841  
F0

842  
C4

843  
F0

844  
C4

845  
F0

846  
C4

847  
F0

848  
C4

849  
F0

850  
C4

851  
F0

852  
C4

853  
F0

854  
C4

855  
F0

856  
C4

857  
F0

858  
C4

859  
F0

860  
C4

861  
F0

862  
C4

863  
F0</



Marine View Cont

73.59

5+00 2.6 71.0 67.1

C<sub>3</sub><sup>2</sup>

106 E 2.6 71.0 72.7

FT<sup>1</sup>

changed to 5+65

+19 W 1.3 72.3 72.3

C<sub>0</sub><sup>0</sup>

+50 1.7 71.9 68.0

C<sub>3</sub><sup>1</sup>

+54 W 6.67 79.66 0.60 72.99 72.9

C<sub>0</sub><sup>1</sup>

71.9

5.6  
1.5  
7.1

1.4

73.3

6+00 6.3 73.4 69.8

C<sub>3</sub><sup>6</sup>

0.12 68.85 10.93 68.73

11.51 57.34

57.34

5+65 WE 73.3 72.9

0 0 1

Profile & Proposed Water  
Grand Ave, Sta 15+30 High  
School Prop to Bond St.

		7.31	
	3.10 10.91		
15+30	26+88	4.6	5.6
+54	27+12	4.7	5.7
16+04	27+62	4.6	5.8
+54	28+12	4.5	5.9
17+04	28+62	4.4	6.0
+54	29+12	4.1	6.3
18+04	29+62	3.9	6.5
T.P.		4.00	6.91
	5.25 11.66		
18+54	30+12	5.0	6.7
19+04	30+62	4.9	6.8
19+54	31+12	4.8	6.9
20+04	31+62	4.7	7.0
+54	32+12	7.2	4.5

WERT  
LEMP  
HOLAHAN

55

10-25-54

Top H. Grand Ave at School prop.

10' W. School prop.

P.O.T.

Note: Stations continued

from survey Page 39, 7-2-54

at 100 as W. of Chng.

See Sheets 2318A-D  
2318 -D

		11.66		
21+04	32+62		7.5	4.2
+54	33+12		7.6	4.1
22+04	33+62		8.6	3.1
T.P.			7.52	4.14
		3.76	7.90	
22+34	33+92		5.1	2.8
+54	34+12		9.5	-1.6
23+04	34+62		11.4	-3.5
+17	34+75		11.5	-3.4
+66	35+24		11.5	-3.4
+79	35+37		9.9	-2.0
24+04	35+62		9.7	3.2
+54	36+12		6.1	1.8
25+04	36+62		5.4	2.5
+54	37+12		4.5	3.4
T.P.			4.58	3.32
		9.08	7.40	
26+04	37+62		4.1	3.3

Top west bank of Slough  
 Bottom " " " "  
 W edge water  
 E edge water  
 Bottom east bank  
 Top " "

		7.40		
26+59	38+12		4.5	2.9
27+09	38+62		4.8	2.6
+59	39+12		5.0	2.4
28+09	39+62		4.7	2.7
+59	40+12		5.0	2.4
29+09	40+62		5.0	2.4
+97.5	41+05.5	?	4.9	2.5
+54.	41+12		4.9	2.5
30+07.6	41+65.6	?	6.3	1.1
TR			3.94	3.46
	4.81	8.25		

2.20 5.37

5.33 T.B.M. spl in TR. E/L Pico 150' So.

N/L of Bond

E/L of Bond

Grand Ave Comb.

15+30 26+88

E. curb line

19+55 31+13

End Center Island

20+10 31+68

End N. curb line & pavement

School Prop.

prop

proposed water

curb

Grand

4' center island

3" A.C. paving

curb

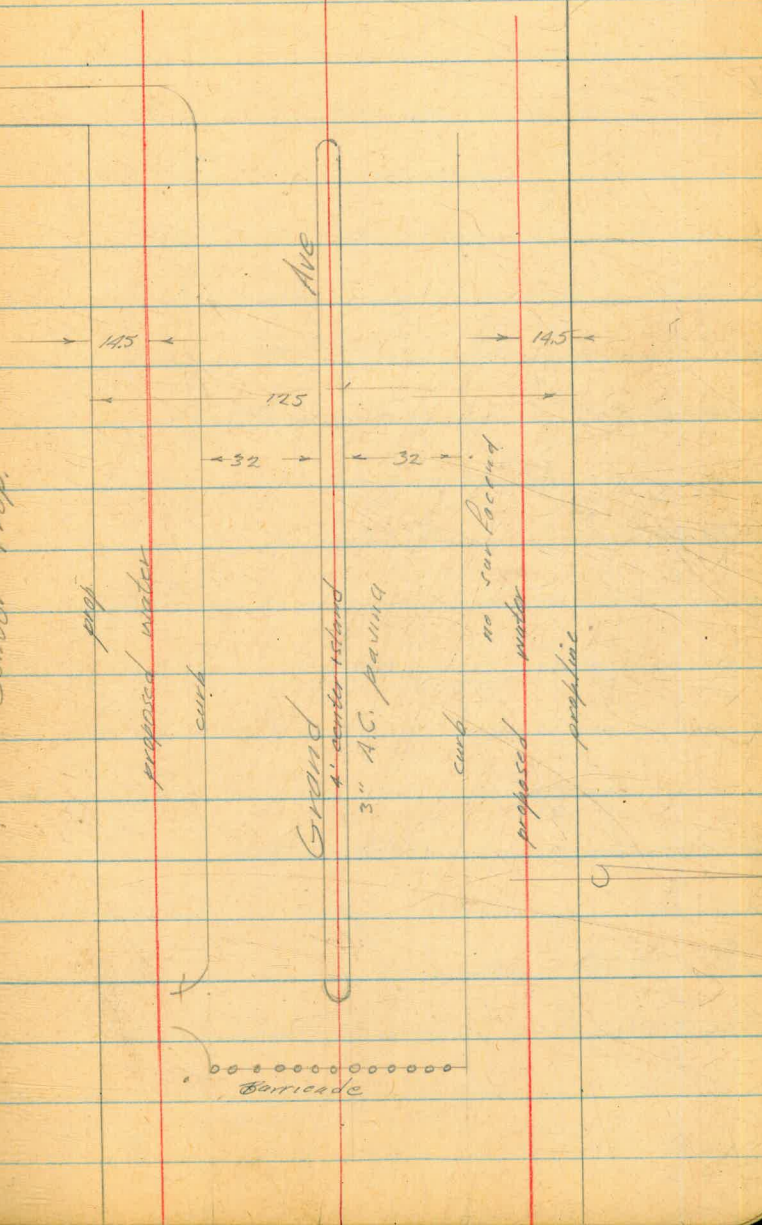
no surfacing

proposed water

proposed

prop line

Barriade



22+36.50 33+94.5

W/L of Pico

22+86.5 34+44.5

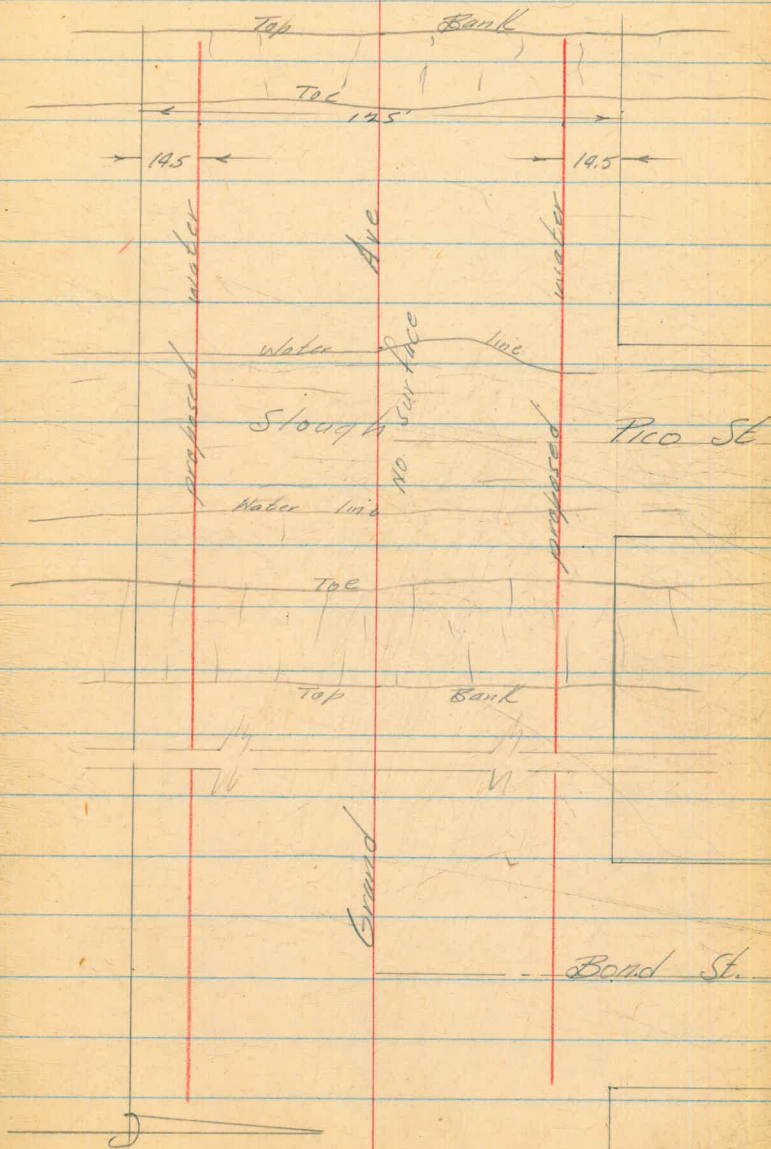
E/L of Pico

29+47.50 41+05.5

W/L of Bond

30+07.50 41+65.5

E/L of Bond



Grand Ave. Marrell to Bond  
Stks for 6" & 8" AC Mains

Five Hyds Set 17.9 from Prop  
Back of Meters Set 92 from Property

0+00 Wly prop Line Marrell

1.98 58.13 5215

3.50 47.53 1210 44.03

8" AC Connecting Line 0+00 Sly Line <sup>Grand</sup>

0+14<sup>5</sup> 90° bend 2.5 39.0 34.8

+50 7.1 40.4 35.6

1+00 5.6 41.9 36.9

+50 4.1 43.4 37.6

+58 3.9 43.6 —

+90<sup>2</sup> 3.3 44.6 38.0

6" AC North Side Grand

0+50 <sup>op A</sup> split 5.1 42.4 37.2

1+00 4.7 42.8 36.8

+50 5.0 42.5 36.4

2+00 4.3 43.2 36.0

+50 5.1 42.4 35.6

3+00 7.6 39.9 35.0

+50 7.7 39.8 34.6

4+00 8.3 39.2 34.2

+50 5.71 43.89 9.95 38.19 33.9

West  
Williams X  
Voronskys †

95  
31  
179

125  
145  
1195  
65

60

9-29-55

BM NW L&T Hornblend + Marrell

to rock

13.6

4.3

17.9

42.8

3.9

88

14.6

39.1

C4 <sup>2</sup>

C4 <sup>8</sup>

C5 <sup>0</sup>

C5 <sup>8</sup>

C To EXISTING end of Work Balboa

C6.6

C5 <sup>2</sup>

C6 <sup>0</sup>

C6 <sup>1</sup>

C7 <sup>2</sup>

C6 <sup>8</sup>

C4 <sup>9</sup>

C5 <sup>2</sup>

C5 <sup>0</sup>

C4 <sup>3</sup>

Turn on Quarry

2+00<sup>5</sup> to existing 10' ST

Grand Ave North Side Cont

6" AC

43.89

4+65 WM N	5.6	38.3	37.6
5+00	5.3	38.6	33.6
+50	5.0	38.9	33.4
6+00	4.0	39.9	33.2
Tapping Cross			
+39	4.3	39.6	33.0
+50	5.2	38.7	32.9
7+00	6.8	37.1	32.5
+20 M N	7.8	36.7	36.4
+46 M N	7.3	36.6	36.3
+50	7.3	36.6	32.2
8+00	7.3	36.6	32.0
+50	7.3	36.6	31.6
9+00	7.7	36.2	31.2
+20 M.N.	8.2	35.7	34.5
+50 2.70	38.58	8.07	35.82 30.4
+86 M N	5.2	33.3	33.6
10+00	5.3	33.2	29.0
+50	4.6	33.9	28.2
11+00	5.9	32.6	27.6

38.5  
4.2  
34.3

61

9/29/55

C0 <sup>7</sup>	2063
C5 <sup>0</sup>	
C5 <sup>5</sup>	
C6 <sup>7</sup>	
No CUT	
C5 <sup>8</sup>	
C4 <sup>6</sup>	75
C0 <sup>3</sup>	2110-08
C0 <sup>3</sup>	2111-12
C4 <sup>4</sup>	81
C4 <sup>6</sup>	36.6
C4 <sup>0</sup>	83
C5 <sup>0</sup>	35.6
C5 <sup>0</sup>	8.3
C5 <sup>0</sup>	35.2
C1 <sup>1</sup>	8.7
C5 <sup>4</sup>	2192 31.0
F0 <sup>3</sup>	Turn abnove 9.9
C4 <sup>2</sup>	21.98
C5 <sup>7</sup>	56
C5 <sup>0</sup>	59
C5 <sup>0</sup>	72



Grand Ave North Side 6" AC Main

38.57

11+50	7.0	31.5	25.0
12+00	8.4	30.1	24.5
+49 FH Tec	8.5	30.0	24.0
+49 @ 9 FH	8.9	29.6	27.8
	10.34	28.18	=28.21

Grand Ave South Side 8" AC

2.43 46.46 44.03  
0+00 w/ly prop line (control)

0+60 90° Bend	7.7	38.8	34.8
0+90 FH Tec	6.1	40.4	34.7
0+90 @ 9 FH	5.8	40.7	39.4
0+96 MS	5.8	40.7	39.2
1+00	6.1	40.4	34.7
1+50	6.4	40.1	34.6
2+00	7.2	39.3	34.2
+44 MS	7.6	38.9	38.0
+34 MS	8.0	38.5	37.8
1+50	8.3	38.2	33.7
+75 MS	8.6	37.9	37.6
+85 MS	8.7	37.8	37.4
3+00	9.0	37.5	33.2

9/29/55

C6  $\frac{5}{}$  8.3  
 C5  $\frac{6}{}$  8.5  
 C6  $\frac{0}{}$  29.6  
 C1  $\frac{8}{}$  27.0  
 5.6 To Fill

See page 43

TP. N.Y. Fire Sewer MH Olney + Grand

TP See page 60

C4  $\frac{0}{}$  Bugia Work  
 C5  $\frac{7}{}$   
 C1  $\frac{3}{}$  To FLANGE C6  $\frac{0}{}$  To L  
 012  $\frac{7}{}$   
 C5  $\frac{5}{}$   
 C5  $\frac{1}{}$   
 C5  $\frac{9}{}$  2021  
 C0  $\frac{7}{}$  2025  
 C4  $\frac{5}{}$   
 C0  $\frac{3}{}$  2029  
 C0  $\frac{4}{}$  2033  
 C0  $\frac{3}{}$   
 C4  $\frac{3}{}$

Station	40.46	9.5	37.0	33.0
3+50		9.5	37.0	33.0
3+50 WMS		9.5	37.0	36.8
+62 WMS		9.5	37.0	36.7
4+00 406	40.49	9.84	36.62	32.2
+17 MS		4.3	36.4	36.4
+50		4.9	35.8	31.2
+58 M.S.		4.9	35.8	36.2
+98 MS		5.7	35.0	35.9
5+00		5.6	35.1	30.6
+23 MS		5.6	35.1	35.8
+50		5.2	35.5	30.8
6+00		6.0	34.7	30.9
Tapping 500				
+29		6.2	34.5	
+50		5.7	35.0	30.9
7+00		4.7	36.0	31.0
+10 MS		4.8	35.9	34.9
+50		4.8	35.9	30.8
8+00		6.1	34.6	30.2
+30 MS		6.9	33.8	34.2
+50		6.9	33.8	29.6
9+00		5.1	35.6	29.4
9+52 M.S.		5.1	35.6	33.4

C4 0	
C0 2	2089
C0 3	2045
C4 4	Turn on Curvey
C0 0	
C4 6	2051
F0 4	2061
F0 9	2065
C4 5	
F0 7	2069
C4 7	
C0 8	
C4 1	
C5 0	
C1 0	2111
C5 1	5.3
C4 4	6.4
F0 4	2127
C4 2	
C6 3	7.2 6.3
C2 2	2135

9/29/55

$$\begin{array}{r} 31.5 \\ 2.3 \\ \hline 32.2 \end{array}$$

Grand Ave South Side  
8" AC

40.68

9+50	0.62	35.86	5.44	35.24	28.6
+74 MS			0.7	35.2	32.3
10+00			1.9	34.0	27.6
+20 MS			2.9	33.6	31.6
+55			5.3	30.6	25.9
+61 MS			5.4	30.5	31.8
11+00			5.9	30.0	25.3
+50			6.6	29.3	24.6

Cut sheet made

7.70 28.16 = 28.21

7.95 47.65 39.70

1.48 43.23

7.95 39.70

Grand Ave South Side Cont

6.39 34.56 28.17

9+74 MS			0.2	34.4	32.3
10+00			1.6	33.0	27.6
10+20 MS			2.5	32.1	31.6
12+00			2.8	26.8	22.8
+14 OV			7.2	27.4	22.7

9/29/55

<sup>6</sup>  
C6 Turn on Sewer 7.5  
<sup>2</sup>  
C2 REPLACE 2153  
<sup>4</sup>  
C6 REPLACE 4.0  
<sup>4</sup>  
C1 REPLACE  
<sup>1</sup>  
C4 5.8  
<sup>3</sup>  
F1 21.65  
<sup>1</sup>  
C4 6.0  
<sup>1</sup>  
C4 6.7

Turn on Sewer MH

BM SW 7' x 7' Hub + Disc Marrett Grand

Ch Grade Balboa

44.50 Top existing 10" CI Balboa

10-5-55

Turn on Sewer MH

C2  
C5  
C0  
C4  
C4

3456

12+50			8.8	25.9	22.4
13+00			8.9	25.7	21.2
+50			9.6	25.0	20.0
14+00			10.3	24.3	18.9
+50			11.9	22.8	17.7
15+00	1.46	22.48	13.34	21.22	16.6
+50			26	20.1	15.6
16+00			3.3	19.4	14.4
+50			3.8	18.9	13.4
17+00			5.1	17.6	12.2
+50			6.4	16.3	11.0
18+00			8.0	14.7	9.8
+25 FH Top			9.2	13.5	9.2
+25 (C) FHT			9.0	13.7	13.1
+50			10.1	12.6	8.6
19+00			11.1	11.6	7.6
+50			12.0	10.7	6.6
	1.05	11.36	12.37	10.31	
20+00			2.1	9.3	5.8

C3	4
C4	5
C5	0
C5	4
C5	1
C5	6
C4	5
C4	0
C5	5
C5	4
C5	3
C5	9
C4	3
C4	6
C0	0
C4	0
C4	1
C4	1
C3	5

Turn on Sunday

TO FLANGE (C4<sup>5</sup> TO 1)CUT SHEET MADE TO HERE  
9/7/55

Grand Ave South Side

66

1136

20+25	2.9	4.5	5.0
+50	3.4	8.0	3.3
+62.5	3.5	7.9	2.4
+87.5	4.3	7.1	2.2
21+00	4.5	6.9	2.2
+50	5.3	6.1	2.4
+63.9V	5.5	5.9	2.2
22+00	6.2	5.2	1.6
+50	6.8	4.6	1.0
23+00	7.0	4.4	0.9
+50	7.0	4.4	0.8
24+00	7.8	3.6	0.2
536	8.71	8.01	3.35
24+50	5.3	3.1	-0.4
25+00	5.4	3.3	-0.3
+50	5.2	3.5	-0.2
26+00	5.0	3.7	0.0
+32	4.9	3.8	0.6
	2.66	6.05	= 6.08

C3  $\frac{5}{}$

C4  $\frac{7}{}$

C5  $\frac{5}{}$

C4  $\frac{9}{}$

C4  $\frac{7}{}$

C3  $\frac{7}{}$

C3  $\frac{7}{}$

C3  $\frac{6}{}$

C3  $\frac{6}{}$

C3  $\frac{5}{}$

C3  $\frac{6}{}$

C3  $\frac{4}{}$

C3  $\frac{8}{}$

C3  $\frac{6}{}$

C3  $\frac{7}{}$

C3  $\frac{7}{}$

C3  $\frac{2}{}$  no cut end of work

1 in sewer MH

100 ft 23+32 see page 95

6.05  
 $\frac{7.34}{13.39}$   
 $\frac{11.45}{1.94}$

Top Bell Sewer 21+00

5.88 11.93 6.05  
 4.41 7.52  
 5.88 6.05

CONT.

GRAND AVE No. SIDE 6" A.C.

T.B.M.	2.56	30.77	28.21
12+53		0.8	30.0 23.9
13+00		1.6	29.2 22.9
+50		2.9	27.9 21.8
14+00		4.1	26.7 20.8
+50		5.7	25.1 19.6
15+00		6.6	24.2 18.4
+50		8.0	22.8 17.3
16+00		8.8	22.0 16.0
+50		9.9	20.9 14.8
17+00		11.6	19.2 13.8
T.P			
+50	1.02	18.97	12.82 17.95 12.6
+92			1.7 17.3 11.7
18+00		2.2	16.8 11.4
+50		3.2	15.8 10.2

WEST  
 WILLIAMS  
 VARONFAKIS X  
 KELLHOFER?

9/11/55

CLEAR

67

T.B.M.  
 +5.85 to Flow

75.0  
 5.85  
 1.67

Top Skyrim Sewer M.H. 03 41 2150

PAGE 43

NLY. RIM SEWER M.H. OLNEY + GRAND

C6	$\frac{1}{1}$	6" G.V.
C6	$\frac{3}{3}$	
C6	$\frac{1}{1}$	
C5	$\frac{9}{9}$	
C5	$\frac{5}{5}$	
C5	$\frac{8}{8}$	
C5	$\frac{5}{5}$	
C6	$\frac{0}{0}$	
C6	$\frac{1}{1}$	
C5	$\frac{4}{4}$	
C5	$\frac{4}{4}$	
C5	$\frac{6}{6}$	G.V.
C5	$\frac{4}{4}$	
C5	$\frac{6}{6}$	

CUT SHEET STARTS

GRAND AVE No. SIDE CONT.

6" A.C.

18.97

48.

9/11/55

19+00 4.7 14.3 9.2

C5 <sup>1</sup>

+50 6.0 13.0 8.2

C4 <sup>8</sup>

20+00 7.5 11.5 7.4

C4 <sup>1</sup>

+25 7.8 11.2 7.0

C4 <sup>2</sup>

+50 8.1 10.9 5.3

C5 <sup>6</sup>

+62.5 7.9 11.1 4.4

C6 <sup>7</sup>

+88.5 9.4 9.6 4.2

C5 <sup>4</sup>

21+00 9.7 9.3 4.4

C4 <sup>9</sup>

+50 10.2 8.8 4.8

C4 <sup>0</sup>

NOT MARKED  
TO BE EXPOSED

+89 11.4 7.6 4.2

C3 <sup>4</sup>

F.H. TEE

+89 11.3 7.7 8.5

F0 <sup>8</sup>

TO FLANGE (5) F.H. C3 <sup>5</sup> TO 1

+94 11.6 7.4 4.0

C3 <sup>4</sup>

G.V.

22+00 11.7 7.3 4.0

C3 <sup>3</sup>

+25 11.9 7.1 3.4

C3 <sup>7</sup>

+50 12.4 6.6 3.1

C3 <sup>5</sup>

T.P. 3.57 10.15

12.39 6.58

23+00 4.0 6.2 2.7

C3 <sup>5</sup>

+50 4.6 5.6 2.0

C3 <sup>6</sup>

24+00 4.5 5.7 2.0

C3 <sup>7</sup>

+50 5.0 5.2 1.7

C3 <sup>5</sup>

## GRAND AVE. NO. SIDE CONT.

69.

10.15

9/11/55

125+00			5.0	5.2	1.4	C3	$\frac{8}{1}$	
+50			5.5	4.7	1.0	C3	$\frac{7}{1}$	
226+00			5.5	4.7	1.0	C3	$\frac{7}{1}$	
+50			5.4	4.8	1.4	C3	$\frac{4}{1}$	
27+00			5.0	5.2	1.8	C3	$\frac{4}{1}$	
T.P.						C3	$\frac{0}{1}$	
+50	6.22	11.38	4.99	5.16	2.2	C3	$\frac{6}{1}$	
28+00			6.4	5.0	2.4	C2	$\frac{8}{1}$	
+25			6.1	5.3	2.5	C2	$\frac{8}{1}$	
+50			6.3	5.1	2.6	C2	$\frac{5}{1}$	
29+00			6.3	5.1	2.9	C2	$\frac{2}{1}$	
+25			6.1	5.3	2.8	C2	$\frac{5}{1}$	
+50			6.0	5.4	2.9	C2	$\frac{5}{1}$	
30+00			5.9	5.5	3.0	C2	$\frac{5}{1}$	
+50			5.8	5.6	3.0	C2	$\frac{6}{1}$	
231+00			5.7	5.7	3.2	C2	$\frac{5}{1}$	
+50			5.2	6.2	3.4	C2	$\frac{8}{1}$	
32+00			5.1	6.3	3.4	C2	$\frac{9}{1}$	
+50			4.8	6.6	3.4	C3	$\frac{2}{1}$	
33+00			4.5	6.9	3.4	C3	$\frac{5}{1}$	
+25			4.6	6.8	3.4	C3	$\frac{4}{1}$	2.03 9.73 -3.68 7.70
+50			4.3	7.1	3.4	C3	$\frac{7}{1}$	3.61 6.12 = 6.08 Page 66
33+87			3.4	8.0	5.0	C3	$\frac{0}{1}$	22 $\frac{1}{2}$ BEND (CUT SHEET ENDS)



Grand Ave  
Cont C<sup>1</sup>AE North side  
Bond - P<sup>100</sup>

3.89	7.91	4.02		
2.05	9.59	0.37	7.54	
35+09		25	6.1	4.8
+75		4.8	4.8	-1.6
36+00		15	8.1	-1.5
+50		22	7.4	-1.4
37+00		72	2.4	-1.3
37+04 MN		4.9	4.7	2.4
37+50		70	2.6	-1.2
38+00		70	2.6	-1.0
+50		70	2.6	-1.0
39+00		69	2.7	-1.0
+50		66	3.0	-1.0
+75				-1.0
40+00		65	3.1	-1.0
+07 MN		6.3	3.3	3.3
+50		12	5.4	-1.2
41+00		33	6.3	-1.2
+38		205	7.54	-1.5
5.67	8.00	7.26	7.33	
		3.97	4.03	4.02

WEST  
WILLIAMS X  
KELLHOFER †

70.

10/19/55 PARTLY CLOUDY

⑤ Mon SW Bond + Magnolia St

	Turn on 11+39	2	7.3
C <sup>1</sup> $\frac{3}{1}$	Begin Work	2.3	
C <sup>6</sup> $\frac{4}{1}$		6.7	
C <sup>9</sup> $\frac{6}{1}$		8.9	
C <sup>8</sup> $\frac{8}{1}$		2.6	
		5.8	
C <sup>3</sup> $\frac{7}{1}$		2.9	
		6.7	
C <sup>2</sup> $\frac{3}{1}$			
C <sup>3</sup> $\frac{8}{1}$		26.36	
		2.3	
C <sup>3</sup> $\frac{6}{1}$		7.3	
		2.3	
C <sup>3</sup> $\frac{6}{1}$		7.3	
		2.1	
C <sup>3</sup> $\frac{6}{1}$		7.7	
		7.5	
C <sup>3</sup> $\frac{7}{1}$		7.1	
		9.0	
C <sup>4</sup> $\frac{0}{1}$		6.6	
		3.1	
C <sup>4</sup> $\frac{1}{1}$		6.5	
C <sup>0</sup> $\frac{0}{1}$		26.86	
		5.3	
C <sup>6</sup> $\frac{6}{1}$		4.3	
		6.85	
C <sup>7</sup> $\frac{5}{1}$		2.74	on New Ave page
	DONT MARK	7.45	
	end of work	2.04	

HORN BLEND ST.  
FIGUEIROA TO PICO ST.  
@ STK'S & GED

10/21/55

SHIRLEY  
MARTELL  
KEMP  
HELOHAN

71

S.W. CONC. MEN. FIGUEIROA & HORN BLEND

TBM	6.01	10.96	4.25		
0+33±	8" x 6" TAP SLEEVE BY CITY	5.0	6.0	1.6	
0+45	22 1/2° BEND	5.3	5.7	1.6	041
0+50		5.4	5.6	1.6	040
1+00		5.4	5.6	1.6	040
1+50		4.8	6.2	1.6	040
2+00		5.3	5.7	1.1	040
2+50		6.1	4.9	0.8	041
3+00		6.6	4.4	0.6	038
3+50		7.0	4.0	0.2	038
4+00		6.5	4.5	-0.1	040
4+50		6.7	4.3	-0.4	042
5+00		8.0	3.0	-1.2	042
	344 8.89	5.51	5.25		
5+08	G.V.	6.4	2.5	-1.4	
5+13	12" x 6" CROSS } BY CITY	6.3	2.6	-1.5	
5+18	G.V.	6.2	2.7	-1.5	
5+50		6.4	2.5	-1.2	032
6+00		5.9	3.0	-1.0	040
6+50		5.5	3.4	-0.8	040
6+75		5.4	3.5	-0.6	041

(CONT'D)

3.2  
2.6

72.

8.89

8+03 6+80 F.H. TEE	4.3	4.6	0.2	C 4 <sup>2</sup>	WATER METERS		
(S)	3.6	5.3		C 0 <sup>2</sup> C 5 <sup>1</sup>	3+26 N.		
7+00	5.7	3.2	0.0	C 3 <sup>2</sup>	3+83 N.		
7+50	4.8	4.1	0.0	C 4 <sup>1</sup>	4+25 N.	7+00 4.1 + 5.9	
8+00	4.2	4.7	0.2	C 4 <sup>5</sup>	4+70	11. 10.0	
8+50	4.3	4.6	0.3	<del>C 4<sup>2</sup> C 4<sup>3</sup></del>	MN 7+50	5.5	4.5 3.8 0.0
9+00	4.1	4.8	0.4	<del>C 5<sup>2</sup> C 4<sup>4</sup></del>	M 5 10+30	4.9 5.1	
9+50	3.8	5.1	0.5	<del>C 5<sup>4</sup> C 4<sup>6</sup></del>		4.7 C 0 <sup>1</sup>	
10+00	4.2	4.7	0.6	<del>C 5<sup>3</sup> C 4<sup>1</sup></del>		10.0 - 5.6	
10+50	4.5	4.4	0.4	<del>C 4<sup>8</sup> C 4<sup>0</sup></del>		4.4 - 4.4	
11+00	5.1	3.8	0.0	C 3 <sup>2</sup>			
11+03 B.O. Assy	5.1	3.8	0.0	C 3 <sup>2</sup>			
	WATER METERS						
	10.96						
1+31 N.	4.7	6.3	06.2	C 0 <sup>1</sup>		2758	
1+71 S.	5.5	5.5	05.4	C 0 <sup>1</sup>		2751	
1+71 N.	5.0	6.0	06.0	C 0 <sup>0</sup>		2752	
2+06 N.	4.9	6.1	05.9	C 0 <sup>2</sup>		2744	
2+71 N.	5.7	5.3	05.5	F 0 <sup>2</sup>		2736	
2+85 S.	6.2	4.8	05.0	F 0 <sup>1</sup>		2735	

10.96 Hi

3+25 N	6.5	1.5	05.3	F08	2724
+88 N	7.1	3.9	05.1	F12	2718
4+25 N	7.0	4.0	04.9	F09	2710
4+70 N	7.6	3.4	04.7	F13	2704

~~80~~

889 Hi

6+22 N	4.7	4.2	04.8	F06	2686
6+52 S	5.0	3.9	04.9	F10	2681
+62 N	4.7	4.2	04.4	F02	2676
7+07 S	4.8	4.1	04.6	F05	2671
7+21 S	4.7	4.2	04.6	F04	2667
8+48 N	3.8	5.1	05.5	F00	2652
8+89 N	4.1	4.8	05.7	F09	2644
9+27 N	4.0	4.9	05.8	F09	2636
9+74 N	4.1	4.8	05.9	F11	2630
10+26 N	4.1	4.8	06.0	F12	2620
10+70 N	4.2	4.7	06.1	F12	

360 5.29 = 5.33

TBM Nail in Tel pole piece 150' West of Pitou blend

TP	2.70	8.15	5.45
CK. BM.	5.87	2.28	= 2.48

Pg. 71

NWLY. COR. BOND &amp; GRAND 2" x 2" HUB

MARTIN AVE.  
32<sup>ND</sup> ST. TO BANCROFT  
PRELIMINARY

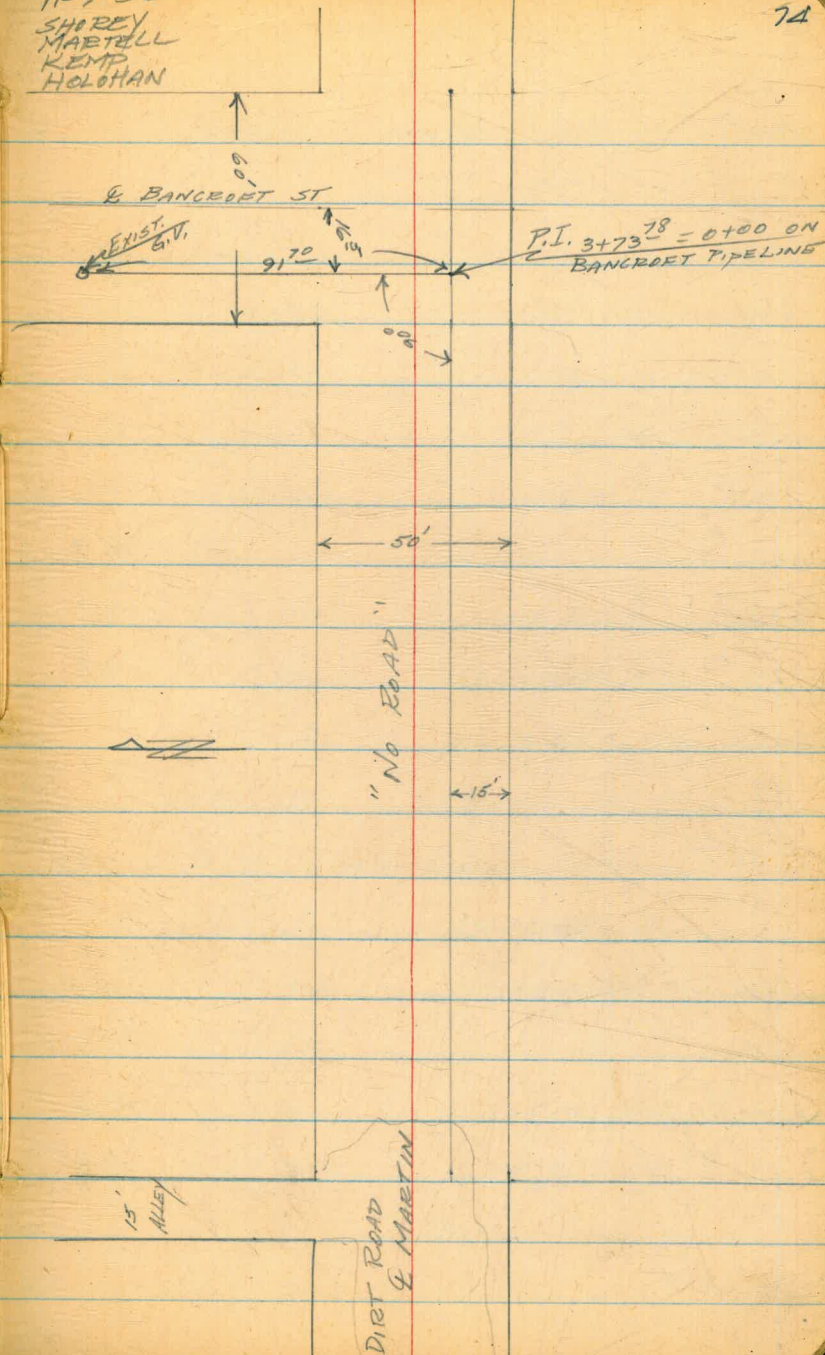
4+20<sup>28</sup> = E/L BANCROFT ST.

3+73<sup>78</sup> P.I.

2+21 = E/L ALLEY - SEE F.B. 913

11-9-55  
SHREY  
MARTELL  
KEMP  
HOLOHAN

74



MARTIN ST.  
(CONT'D)

11-9-55  
SHOREY  
MARTELL  
KEMP  
HOLAHAN

75

TBM 8.22 20.78 12.56 1" IRON PIPE S.E. COR. BANCROFT & MARTIN (Pg. 6)

				LT	RT
2+50		0.8	20.0	0.7 10'	0.0 10'
3+00		4.8	16.0	4.8 10'	5.5 10'
3+50		8.2	12.6	7.7 10'	8.6 10'
3+73 <sup>78</sup> P.I.		9.1	11.7	9.2 10'	9.5 10'
4+00		10.2	10.6	9.9 10'	10.2 10'
4+03 <sup>5</sup>		10.1	10.7		
4+12	TOP SLOPE	6.6	14.2	8.2 10'	6.9 10'
4+20 <sup>28</sup>	E/L BANCROFT ST.	11.0	9.8	11.0 10'	11.7 10'
4+30	TOE SLOPE	15.7			
TP	8.07	27.83	1.03	19.75	

3+73<sup>18</sup> = 0+00 ON PROPOSED PIPELINE STUB

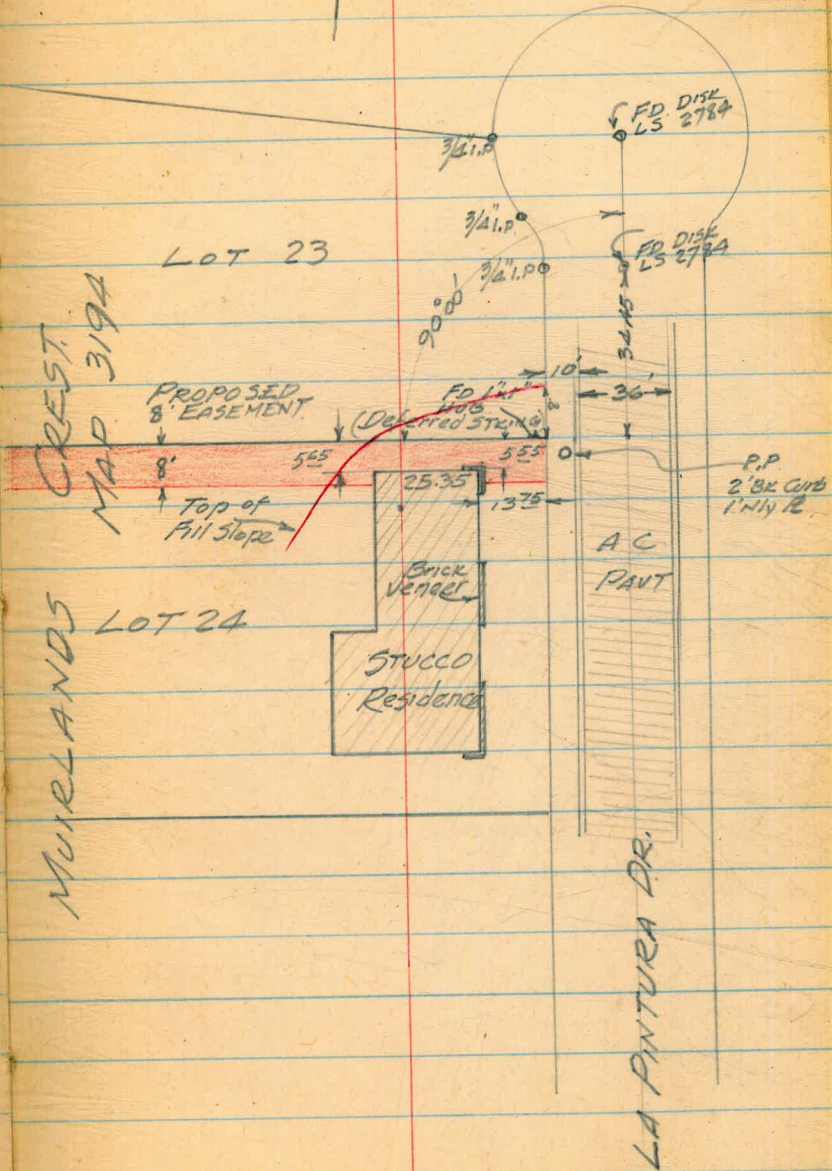
ON BANCROFT ST.

				LT	RT
0+00	ON BANCROFT ST.	16.1	11.9		
0+50		14.1	13.7	7.7 15'	12.6 6'
0+91 <sup>20</sup>	G.O.D. @ G.V.	6.1	21.7		
0+91 <sup>20</sup>	ON G.V. STEM.	10.42	17.4	4.3 15'	4.3 8'
				6.1 5'	7.2 8'
TP	3.43	18.08	13.18	14.65	10.7 15'
CK. TBM		5.50	12.58	= 12.56	

PROPOSED EASEMENT  
LOT 24  
MUIRLANDS CREST.

MAR. 5, 1957  
BEATTY  
O'BRIEN

76.



68  
3A  
3A

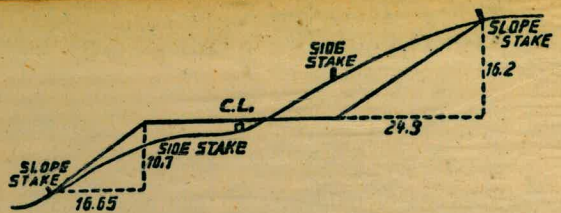
1.4142136  
2  
7071050

46.5  
7+20.28

15+26  
14+86  
40

3+73.78  
16.5  
30  
7+20.28

57.82



**DISTANCES FROM SIDE STAKES FOR CROSS-SECTIONING.**  
SLOPE 1 1/2 TO 1. ROADWAY OF ANY WIDTH.

	0	.1	.2	.3	.4	.5	.6	.7	.8	.9	
0	0.00	0.15	0.30	0.45	0.60	0.75	0.90	1.05	1.20	1.35	0
1	1.50	1.65	1.80	1.95	2.10	2.25	2.40	2.55	2.70	2.85	1
2	3.00	3.15	3.30	3.45	3.60	3.75	3.90	4.05	4.20	4.35	2
3	4.50	4.65	4.80	4.95	5.10	5.25	5.40	5.55	5.70	5.85	3
4	6.00	6.15	6.30	6.45	6.60	6.75	6.90	7.05	7.20	7.35	4
5	7.50	7.65	7.80	7.95	8.10	8.25	8.40	8.55	8.70	8.85	5
6	9.00	9.15	9.30	9.45	9.60	9.75	9.90	10.05	10.20	10.35	6
7	10.50	10.65	10.80	10.95	11.10	11.25	11.40	11.55	11.70	11.85	7
8	12.00	12.15	12.30	12.45	12.60	12.75	12.90	13.05	13.20	13.35	8
9	13.50	13.65	13.80	13.95	14.10	14.25	14.40	14.55	14.70	14.85	9
10	15.00	15.15	15.30	15.45	15.60	15.75	15.90	16.05	16.20	16.35	10
11	16.50	16.65	16.80	16.95	17.10	17.25	17.40	17.55	17.70	17.85	11
12	18.00	18.15	18.30	18.45	18.60	18.75	18.90	19.05	19.20	19.35	12
13	19.50	19.65	19.80	19.95	20.10	20.25	20.40	20.55	20.70	20.85	13
14	21.00	21.15	21.30	21.45	21.60	21.75	21.90	22.05	22.20	22.35	14
15	22.50	22.65	22.80	22.95	23.10	23.25	23.40	23.55	23.70	23.85	15
16	24.00	24.15	24.30	24.45	24.60	24.75	24.90	25.05	25.20	25.35	16
17	25.50	25.65	25.80	25.95	26.10	26.25	26.40	26.55	26.70	26.85	17
18	27.00	27.15	27.30	27.45	27.60	27.75	27.90	28.05	28.20	28.35	18
19	28.50	28.65	28.80	28.95	29.10	29.25	29.40	29.55	29.70	29.85	19
20	30.00	30.15	30.30	30.45	30.60	30.75	30.90	31.05	31.20	31.35	20
21	31.50	31.65	31.80	31.95	32.10	32.25	32.40	32.55	32.70	32.85	21
22	33.00	33.15	33.30	33.45	33.60	33.75	33.90	34.05	34.20	34.35	22
23	34.50	34.65	34.80	34.95	35.10	35.25	35.40	35.55	35.70	35.85	23
24	36.00	36.15	36.30	36.45	36.60	36.75	36.90	37.05	37.20	37.35	24
25	37.50	37.65	37.80	37.95	38.10	38.25	38.40	38.55	38.70	38.85	25
26	39.00	39.15	39.30	39.45	39.60	39.75	39.90	40.05	40.20	40.35	26
27	40.50	40.65	40.80	40.95	41.10	41.25	41.40	41.55	41.70	41.85	27
28	42.00	42.15	42.30	42.45	42.60	42.75	42.90	43.05	43.20	43.35	28
29	43.50	43.65	43.80	43.95	44.10	44.25	44.40	44.55	44.70	44.85	29
30	45.00	45.15	45.30	45.45	45.60	45.75	45.90	46.05	46.20	46.35	30
31	46.50	46.65	46.80	46.95	47.10	47.25	47.40	47.55	47.70	47.85	31
32	48.00	48.15	48.30	48.45	48.60	48.75	48.90	49.05	49.20	49.35	32
33	49.50	49.65	49.80	49.95	50.10	50.25	50.40	50.55	50.70	50.85	33
34	51.00	51.15	51.30	51.45	51.60	51.75	51.90	52.05	52.20	52.35	34
35	52.50	52.65	52.80	52.95	53.10	53.25	53.40	53.55	53.70	53.85	35
36	54.00	54.15	54.30	54.45	54.60	54.75	54.90	55.05	55.20	55.35	36
37	55.50	55.65	55.80	55.95	56.10	56.25	56.40	56.55	56.70	56.85	37
38	57.00	57.15	57.30	57.45	57.60	57.75	57.90	58.05	58.20	58.35	38
39	58.50	58.65	58.80	58.95	59.10	59.25	59.40	59.55	59.70	59.85	39
40	60.00	60.15	60.30	60.45	60.60	60.75	60.90	61.05	61.20	61.35	40
41	61.50	61.65	61.80	61.95	62.10	62.25	62.40	62.55	62.70	62.85	41
42	63.00	63.15	63.30	63.45	63.60	63.75	63.90	64.05	64.20	64.35	42
43	64.50	64.65	64.80	64.95	65.10	65.25	65.40	65.55	65.70	65.85	43
44	66.00	66.15	66.30	66.45	66.60	66.75	66.90	67.05	67.20	67.35	44
45	67.50	67.65	67.80	67.95	68.10	68.25	68.40	68.55	68.70	68.85	45
46	69.00	69.15	69.30	69.45	69.60	69.75	69.90	70.05	70.20	70.35	46
47	70.50	70.65	70.80	70.95	71.10	71.25	71.40	71.55	71.70	71.85	47
48	72.00	72.15	72.30	72.45	72.60	72.75	72.90	73.05	73.20	73.35	48
49	73.50	73.65	73.80	73.95	74.10	74.25	74.40	74.55	74.70	74.85	49
50	75.00	75.15	75.30	75.45	75.60	75.75	75.90	76.05	76.20	76.35	50

THE NATIONAL BLANK BOOK COMPANY  
HOLYOKE MASSACHUSETTS  
NEW YORK CHICAGO BOSTON SAN FRANCISCO