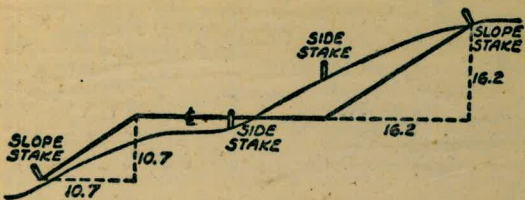


895



Please Return to
City of San Diego Water Dept.
Room 903 Civic Center

DISTANCES FROM SIDE STAKES FOR CROSS-SECTIONING
SLOPE 1 TO 1. ROADWAY OF ANY WIDTH

	0	.1	.2	.3	.4	.5	.6	.7	.8	.9	0
0	0.00	0.10	0.20	0.30	0.40	0.50	0.60	0.70	0.80	0.90	0
1	1.00	1.10	1.20	1.30	1.40	1.50	1.60	1.70	1.80	1.90	1
2	2.00	2.10	2.20	2.30	2.40	2.50	2.60	2.70	2.80	2.90	2
3	3.00	3.10	3.20	3.30	3.40	3.50	3.60	3.70	3.80	3.90	3
4	4.00	4.10	4.20	4.30	4.40	4.50	4.60	4.70	4.80	4.90	4
5	5.00	5.10	5.20	5.30	5.40	5.50	5.60	5.70	5.80	5.90	5
6	6.00	6.10	6.20	6.30	6.40	6.50	6.60	6.70	6.80	6.90	6
7	7.00	7.10	7.20	7.30	7.40	7.50	7.60	7.70	7.80	7.90	7
8	8.00	8.10	8.20	8.30	8.40	8.50	8.60	8.70	8.80	8.90	8
9	9.00	9.10	9.20	9.30	9.40	9.50	9.60	9.70	9.80	9.90	9
10	10.00	10.10	10.20	10.30	10.40	10.50	10.60	10.70	10.80	10.90	10
11	11.00	11.10	11.20	11.30	11.40	11.50	11.60	11.70	11.80	11.90	11
12	12.00	12.10	12.20	12.30	12.40	12.50	12.60	12.70	12.80	12.90	12
13	13.00	13.10	13.20	13.30	13.40	13.50	13.60	13.70	13.80	13.90	13
14	14.00	14.10	14.20	14.30	14.40	14.50	14.60	14.70	14.80	14.90	14
15	15.00	15.10	15.20	15.30	15.40	15.50	15.60	15.70	15.80	15.90	15
16	16.00	16.10	16.20	16.30	16.40	16.50	16.60	16.70	16.80	16.90	16
17	17.00	17.10	17.20	17.30	17.40	17.50	17.60	17.70	17.80	17.90	17
18	18.00	18.10	18.20	18.30	18.40	18.50	18.60	18.70	18.80	18.90	18
19	19.00	19.10	19.20	19.30	19.40	19.50	19.60	19.70	19.80	19.90	19
20	20.00	20.10	20.20	20.30	20.40	20.50	20.60	20.70	20.80	20.90	20
21	21.00	21.10	21.20	21.30	21.40	21.50	21.60	21.70	21.80	21.90	21
22	22.00	22.10	22.20	22.30	22.40	22.50	22.60	22.70	22.80	22.90	22
23	23.00	23.10	23.20	23.30	23.40	23.50	23.60	23.70	23.80	23.90	23
24	24.00	24.10	24.20	24.30	24.40	24.50	24.60	24.70	24.80	24.90	24
25	25.00	25.10	25.20	25.30	25.40	25.50	25.60	25.70	25.80	25.90	25
26	26.00	26.10	26.20	26.30	26.40	26.50	26.60	26.70	26.80	26.90	26
27	27.00	27.10	27.20	27.30	27.40	27.50	27.60	27.70	27.80	27.90	27
28	28.00	28.10	28.20	28.30	28.40	28.50	28.60	28.70	28.80	28.90	28
29	29.00	29.10	29.20	29.30	29.40	29.50	29.60	29.70	29.80	29.90	29
30	30.00	30.10	30.20	30.30	30.40	30.50	30.60	30.70	30.80	30.90	30
31	31.00	31.10	31.20	31.30	31.40	31.50	31.60	31.70	31.80	31.90	31
32	32.00	32.10	32.20	32.30	32.40	32.50	32.60	32.70	32.80	32.90	32
33	33.00	33.10	33.20	33.30	33.40	33.50	33.60	33.70	33.80	33.90	33
34	34.00	34.10	34.20	34.30	34.40	34.50	34.60	34.70	34.80	34.90	34
35	35.00	35.10	35.20	35.30	35.40	35.50	35.60	35.70	35.80	35.90	35
36	36.00	36.10	36.20	36.30	36.40	36.50	36.60	36.70	36.80	36.90	36
37	37.00	37.10	37.20	37.30	37.40	37.50	37.60	37.70	37.80	37.90	37
38	38.00	38.10	38.20	38.30	38.40	38.50	38.60	38.70	38.80	38.90	38
39	39.00	39.10	39.20	39.30	39.40	39.50	39.60	39.70	39.80	39.90	39
40	40.00	40.10	40.20	40.30	40.40	40.50	40.60	40.70	40.80	40.90	40
41	41.00	41.10	41.20	41.30	41.40	41.50	41.60	41.70	41.80	41.90	41
42	42.00	42.10	42.20	42.30	42.40	42.50	42.60	42.70	42.80	42.90	42
43	43.00	43.10	43.20	43.30	43.40	43.50	43.60	43.70	43.80	43.90	43
44	44.00	44.10	44.20	44.30	44.40	44.50	44.60	44.70	44.80	44.90	44
45	45.00	45.10	45.20	45.30	45.40	45.50	45.60	45.70	45.80	45.90	45
46	46.00	46.10	46.20	46.30	46.40	46.50	46.60	46.70	46.80	46.90	46
47	47.00	47.10	47.20	47.30	47.40	47.50	47.60	47.70	47.80	47.90	47
48	48.00	48.10	48.20	48.30	48.40	48.50	48.60	48.70	48.80	48.90	48
49	49.00	49.10	49.20	49.30	49.40	49.50	49.60	49.70	49.80	49.90	49
50	50.00	50.10	50.20	50.30	50.40	50.50	50.60	50.70	50.80	50.90	50

Distance of slope stake from side or shoulder stake for any width roadway, slope 1 to 1. If ground is nearly level, the cut or fill at side stake is located by the double entry method in left column and top row. The number in body of table in same row and column gives distance from side stake to slope stake. If ground is not level estimate the difference in elevation between the side stake and slope stake, lower target by this amount if cut, elevate if fill. Add this amount to cut or fill and find distance in table. Set up rod at this point, and line of sight should cut target. If it does not make the slight adjustment necessary.

163-100
45
163-100

Map 202-1

NOT REPRODUCED
 JAN 20 1965

918.35

44.06
18.62
25.44

75° 04'
90 34' 20"
70° 39' 40"

179 59 60
70 39 40
109 20' 20"

DIRECTIONS FOR USE OF TABLES

TABLE No. XIV

Distance of slope stake from side or shoulder stake for any width roadway, slope $1\frac{1}{2}$ to 1. If ground is nearly level, the cut or fill of side stake is located by the double entry method in from side stake to slope stake. If ground is not level estimate the distance between the side stake and slope stake by amount to cut or fill and find distance in table.

IMPROVED TABLES
AND
INFORMATION

cut target. If it does not make the slight adjustment necessary.

TABLE No. VII

To find Tangent and Distance for curve of any other degree, divide by degree of curve and add correction found in column of corrections. Degree of curve when a given L may be found by dividing tangent (or external), opposite L by given tangent (or external). The distance from a point on the tangent to the curve is very nearly the square of the tangent length divided by twice the radius.

TABLE XIII—CORRECTIONS FOR TANGENTS AND EXTERNALS

These corrections are to be added to the approximate values, found by dividing the tangent, or external, for a 1° curve (Table VIII) by the degree of curve, in order to obtain the true tangents, or externals. Intermediate values may be obtained by interpolation.

FOR TANGENTS ADD

Central Angle	DEGREE OF CURVE													
	5°	10°	15°	20°	25°	30°	35°	40°	45°	50°	55°	60°	65°	70°
10°	.03	.06	.09	.13	.16	.19	.22	.25	.28	.31	.34	.38	.42	.46
15°	.04	.10	.14	.19	.24	.29	.34	.39	.45	.51	.53	.58	.63	.68
20°	.06	.13	.19	.26	.32	.39	.45	.51	.58	.65	.72	.79	.84	.90
25°	.08	.16	.24	.33	.40	.49	.58	.67	.75	.83	.90	.99	1.06	1.14
30°	.10	.19	.29	.39	.49	.59	.69	.79	.89	.99	1.09	1.20	1.29	1.39
35°	.11	.22	.34	.47	.58	.69	.79	.89	.99	1.04	1.29	1.42	1.54	1.66
40°	.13	.26	.40	.53	.67	.80	.93	1.06	1.20	1.34	1.49	1.64	1.79	1.94
45°	.15	.30	.44	.60	.76	.91	1.06	1.21	1.37	1.52	1.70	1.87	2.04	2.21
50°	.17	.34	.51	.68	.85	1.02	1.19	1.36	1.54	1.72	1.91	2.10	2.29	2.48
55°	.19	.38	.57	.76	.95	1.14	1.32	1.52	1.72	1.92	2.14	2.35	2.56	2.77
60°	.21	.42	.63	.84	1.05	1.27	1.49	1.71	1.94	2.17	2.38	2.60	2.83	3.07
65°	.23	.46	.69	.93	1.16	1.40	1.64	1.88	2.13	2.38	2.63	2.88	3.13	3.39
70°	.25	.51	.76	1.02	1.28	1.54	1.80	2.06	2.33	2.60	2.88	3.16	3.44	3.72
75°	.27	.56	.83	1.12	1.40	1.69	1.98	2.27	2.57	2.87	3.16	3.47	3.78	4.09
80°	.30	.61	.91	1.22	1.53	1.84	2.15	2.46	2.78	3.10	3.44	3.78	4.12	4.46
85°	.33	.66	1.00	1.33	1.68	2.02	2.36	2.70	3.05	3.40	3.77	4.14	4.55	4.89
90°	.36	.72	1.09	1.45	1.83	2.20	2.57	2.94	3.32	3.70	4.10	4.50	4.91	5.32
95°	.39	.79	1.19	1.55	2.00	2.40	2.80	3.20	3.61	4.02	4.40	4.98	5.38	5.83
100°	.43	.86	1.30	1.74	2.18	2.62	3.06	3.50	3.95	4.40	4.88	5.37	5.85	6.34
110°	.51	1.03	1.56	2.08	2.61	3.14	3.67	4.21	4.76	5.31	5.86	6.43	7.01	7.60
120°	.62	1.25	1.93	2.52	3.16	3.81	4.45	5.11	5.77	6.44	7.12	7.80	8.50	9.22

FOR EXTERNALS ADD

Central Angle	DEGREE OF CURVE													
	5°	10°	15°	20°	25°	30°	35°	40°	45°	50°	55°	60°	65°	70°
10°	.001	.003	.004	.006	.007	.008	.009	.011	.012	.014	.015	.017	.018	.020
15°	.003	.007	.010	.014	.018	.023	.027	.032	.035	.039	.043	.047	.051	.051
20°	.006	.011	.017	.022	.028	.034	.038	.045	.051	.057	.063	.070	.076	.083
25°	.009	.018	.027	.036	.046	.056	.065	.074	.083	.093	.106	.120	.127	.135
30°	.013	.025	.038	.051	.065	.078	.090	.103	.116	.129	.149	.170	.179	.188
35°	.018	.035	.054	.072	.086	.109	.131	.153	.175	.197	.213	.230	.247	.264
40°	.023	.046	.070	.093	.117	.141	.172	.203	.234	.265	.277	.290	.315	.341
45°	.030	.060	.093	.119	.153	.184	.216	.254	.289	.325	.351	.378	.411	.445
50°	.037	.075	.116	.151	.189	.227	.266	.305	.345	.384	.425	.467	.508	.550
55°	.046	.093	.142	.188	.236	.283	.332	.381	.420	.479	.530	.582	.641	.700
60°	.056	.112	.168	.225	.283	.340	.398	.457	.516	.575	.636	.697	.774	.851
65°	.067	.135	.204	.273	.343	.412	.483	.554	.625	.697	.771	.845	.922	1.01
70°	.080	.159	.240	.321	.403	.485	.568	.652	.735	.819	.906	.994	1.08	1.17
75°	.095	.182	.266	.353	.440	.528	.617	.707	.797	.891	1.07	1.18	1.29	1.39
80°	.110	.220	.332	.445	.558	.671	.787	.903	1.02	1.13	1.25	1.38	1.50	1.62
85°	.128	.259	.391	.524	.657	.790	.926	1.06	1.20	1.34	1.47	1.62	1.76	1.91
90°	.149	.299	.450	.603	.756	.910	1.07	1.22	1.38	1.54	1.70	1.87	2.03	2.20
95°	.174	.350	.522	.706	.885	1.06	1.25	1.43	1.62	1.80	1.99	2.18	2.38	2.58
100°	.200	.401	.604	.809	1.01	1.22	1.43	1.64	1.85	2.06	2.28	2.50	2.73	2.96
110°	.268	.536	.806	1.08	1.35	1.63	1.91	2.20	2.48	2.76	3.05	3.35	3.66	3.96
120°	.360	.721	1.08	1.45	1.82	2.19	2.57	2.95	3.33	3.72	4.11	4.50	4.91	5.32

INDEX

Amherst St 70th to 71st ^{Palms} ^{alice} 1-2 ✓

71st St Amherst to Colony Rd ^{Palms} 3-4 ✓

Colony Rd 71st to 70th ^{Palms} 5-6 ✓

70th St Colony Rd to Amherst St ^{Palms} 7-8 ✓

1950 CAMINO DEL RIO (MISSION VALLEY FREEWAY)

Profile for 8" Fire Service ^{alice} ✓

Amherst 70th to 71st ^{Palms} for 6" AS Main 7 ✓

71st Amherst to Colony Rd ^{alice} 18 ✓

Colony Rd 71st to 70th ^{alice} 19 ✓

70th St Colony Rd to Amherst ^{alice} 20 ✓

^{maps for Motors}

^{Congress + Northridge} 21-22 ✓

Muirlands 12" Feeder line to La Jolla Rancho 23-44 ✓

Muirlands 12" Feeder line Ext. to Scenic Pr. 45-97 ✓

Clove St Zola to Alcott ^{alice} 48-50 ✓

Profile of Alcott St. Clove 300' W ^{alice} 51 ✓

LEVELS, St. George to La Jolla Scenic Dr. ^{alice} 52-58 ✓

lots 677 Check on location of New House ^{alice} ✓

South Muirlands 12" Feeder line ^{alice} 59 ✓

Proposed 8" A.C. MAIN ON FRONTAGE RD. ^{alice} ✓

MISSION VALLEY - OPPOSITE MISSION VALLEY COUNTRY CLUB 60-61 ^{alice} ✓

(D.V.C.)

Proposed Pl.
Mission Valley Inn Subdivision 65 ✓ Alice

Mission Valley Inn Subdivision

STKS for 9" AC Main 68 Alice

Amberst 70th to 71st

A+9A²²

East prop line 71st

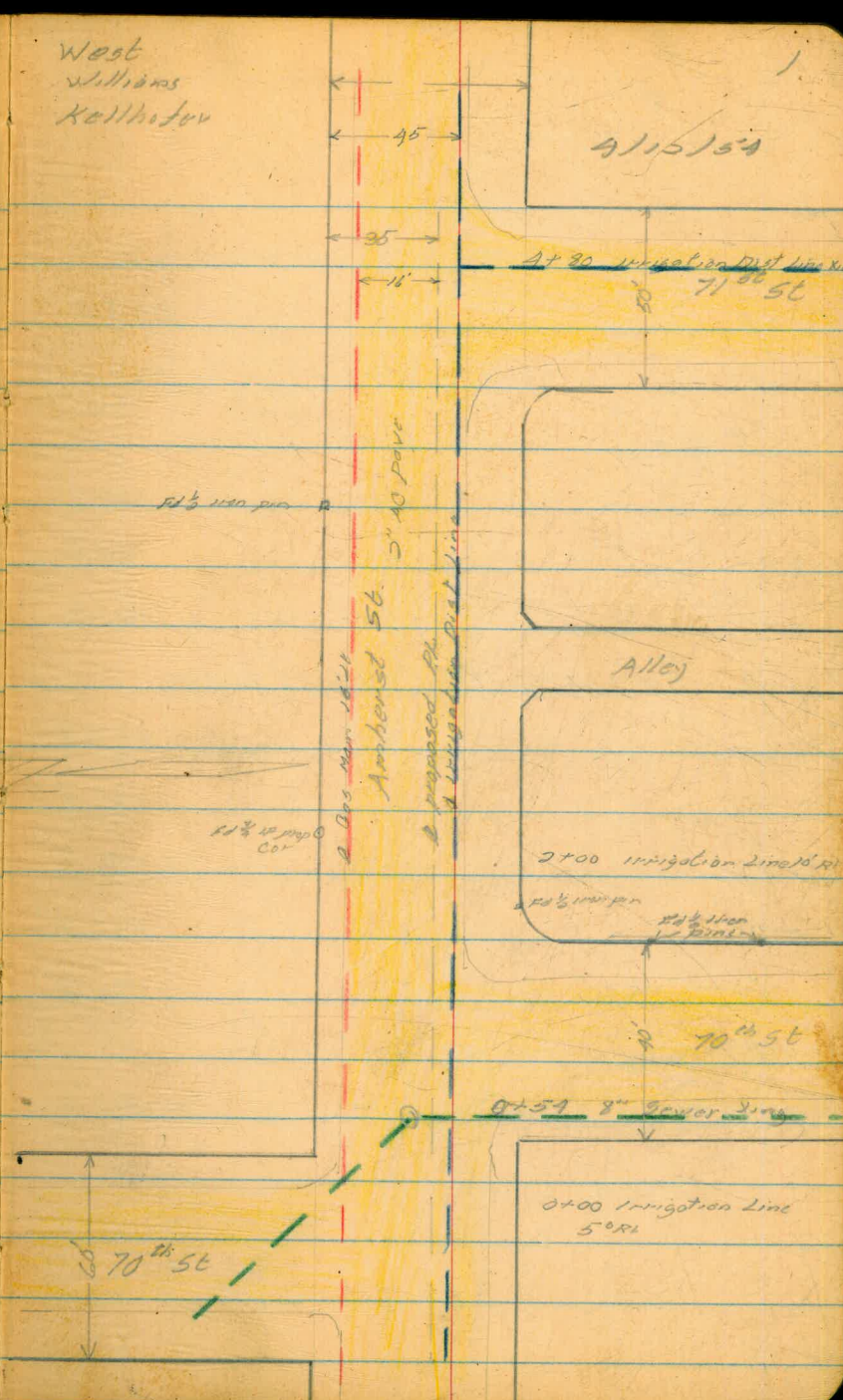
90° 29' 30" RT

A+64²² Amberst = 0+35 71st Ter

A+69⁰⁸ POT

0+86²² POT East prop line 70th

West
Williams
Kallhofer



Q Profile Amberst

1/12/54

1.25 466.51

464.28

SW BP 70th + E1 Cajon

0+00 6.73 458.8

+50 5.37 460.1

+57 5.49 +6.0 to Flow 8" sewer

Top South rim sewer MH 5' off

1+00 5.35 460.1

13' to edge AC pave 11.5' edge AC pave

+50 4.58 460.9

2+00 3.74 461.8

14' LL edge AC pave 11.5' edge AC pave

+50 9.62 472.07 3.06 462.95

Turn on P Nail

3+00 8.78 463.3

13' LL edge AC pave 11' RT edge AC pave

+50 7.62 464.5

4+00 6.19 465.9

15' LL edge AC pave 10' RT edge AC pave

+50 5.65 466.4

+64²² Tee 5.10 466.7

+87 4.86 +5.9 to Flow line

Top North edge sewer MH 14' RT

+94²² 4.95 467.1

east prop line 71st 51

7/54 Amherst to Colony Rd

West
Williams
Kellhofer

3
4/12/54

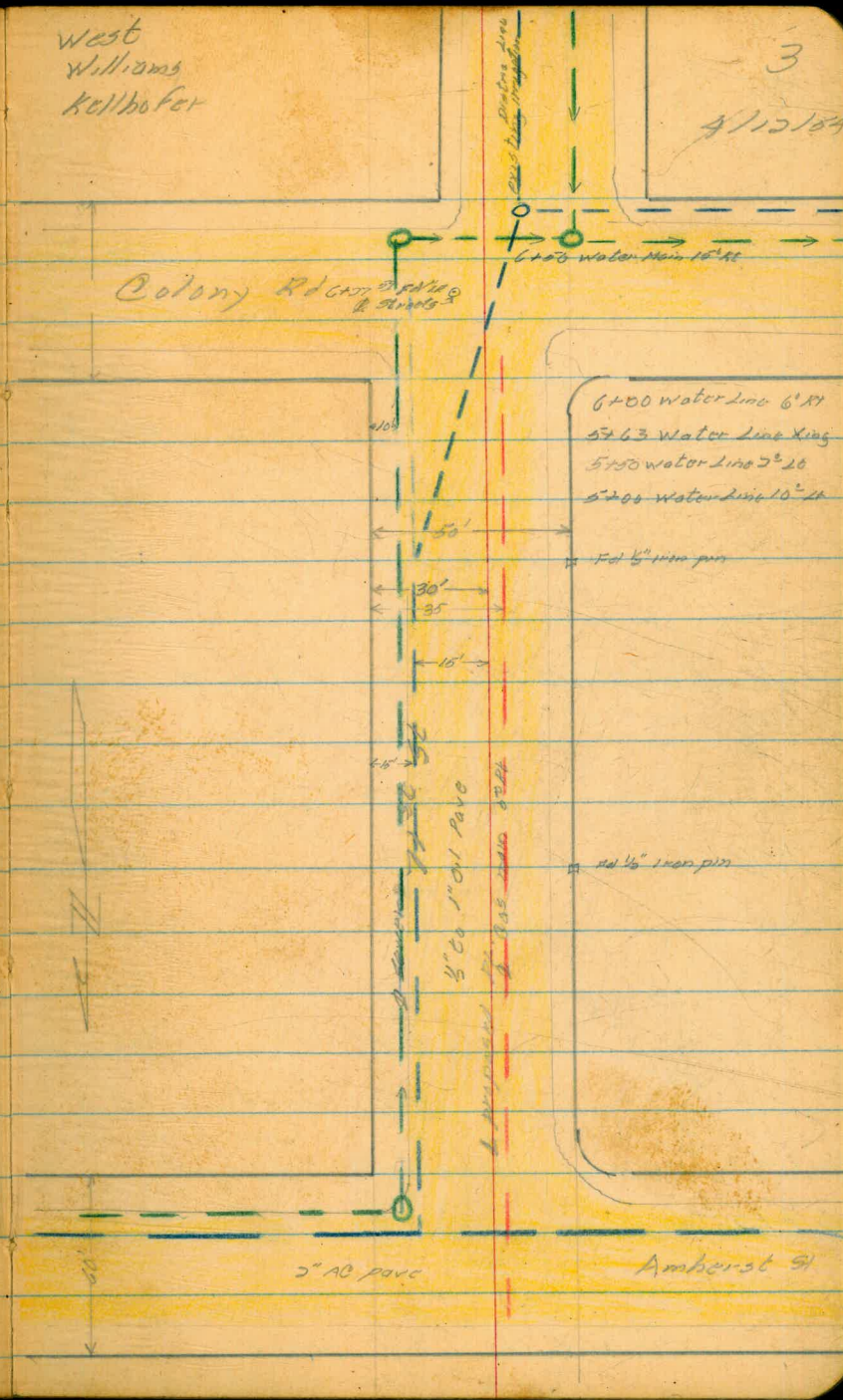
6+17⁵² $91^{\circ}45'30''$ Top = 0+29⁵¹ Colony Rd

4+60[±] POT

2+10³⁶ POT

0+35 POT = 4+64.22 Top

0+00 North prop line Amherst



Profile 71st St

See page #2

472.07

0+00		6.79	465.3	North prop line Amherst St
+18		6.27	465.8	edge AC paving
+50		4.75	467.3	
1+00		3.12	468.9	14' Lt edge oil 7' Rt edge oil
+50		2.31	469.7	
2+00		1.76	470.3	15' Lt edge oil 7' Rt edge oil
+50		1.45	470.6	
3+00	1.59 475.73	0.93	471.14	14' Lt edge oil 10' Rt edge oil
+50		3.79	471.9	
4+00		3.07	472.6	14' Lt edge oil 11' Rt edge oil
+50		3.55	472.1	
5+00		5.46	470.2	14' Lt edge oil 12' Rt edge oil
+50		7.47	468.2	
6+00		9.98	466.2	
+22 ⁵⁹		9.77	465.9	Turn
6+45 ⁶		9.89		+7.9 to Flow Line Top west edge sewer MH 20' Lt
6+45 ⁶		10.47		+8.7 to Flow Line Top east edge sewer MH 35' Rt
6+67 ⁵⁹		10.89		
	2.38 470.57	7.59	468.19	Turn Top FH NW Cor 71 st + Colony Rd
	2.28 465.27	7.58	462.99	
		0.99	461.28 = 461.26	BM BP 20 th St

Colony Rd
71st to 70th

4+09⁹²

West prop line 70th

3+79⁸¹

= 700

Transit line 70th

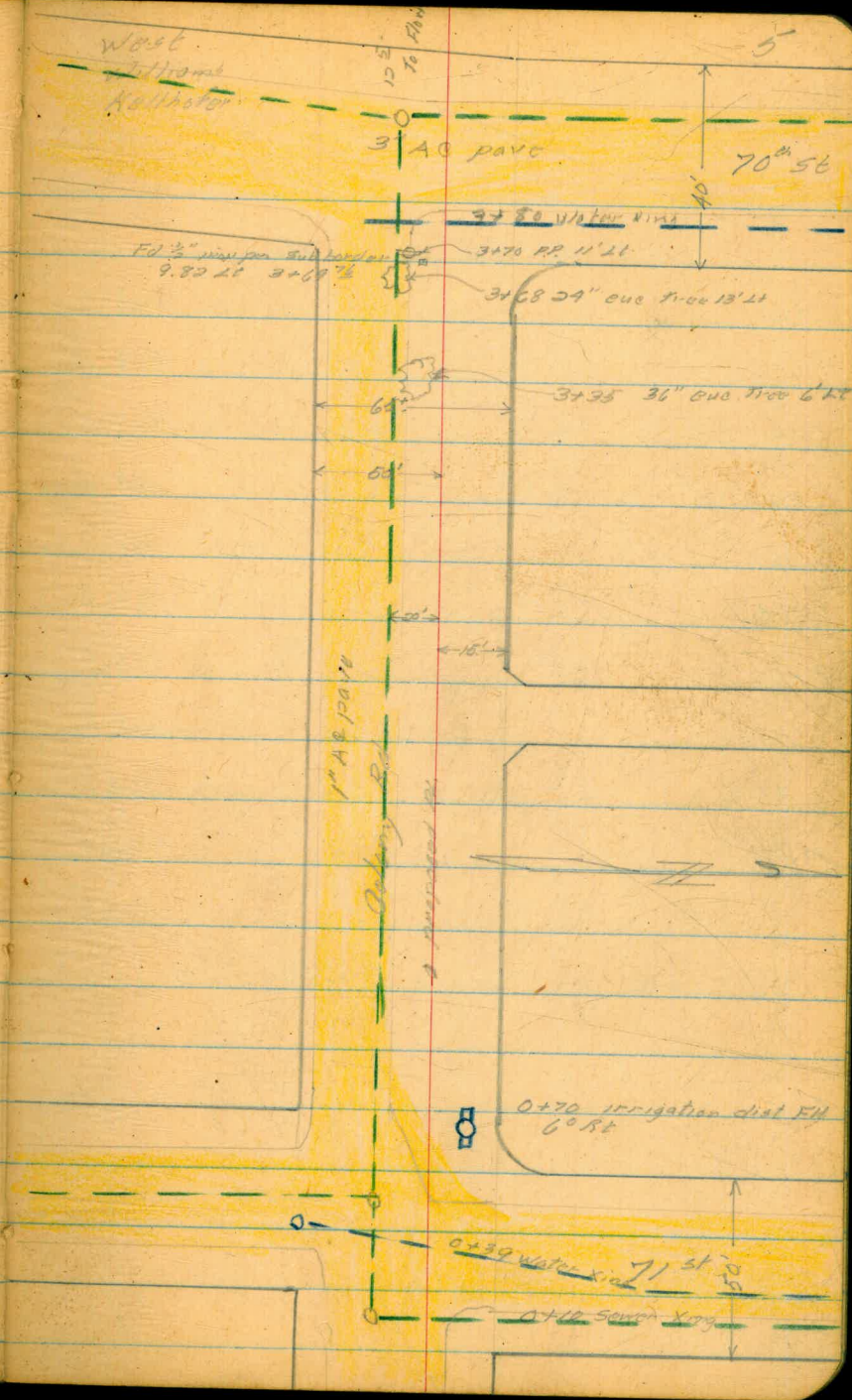
3+69⁷⁶

East prop line 70th

0+29⁸⁴

= 6+17⁸⁹

0+00



Profile Colony Rd
71st to 70th

West
Williams
Kullbsten

6

4/19/54

4.79 472.98 468.19

TBM Tap FH see page #1

0+00 6.77 466.2

+50 7.47 465.5

1+00 7.5 465.5

7.90
10'LT edge oil

6.1 6.3
7'RT 14'RT

+50 7.7 465.3

6.4 6.7
6'RT 10'RT

2+00 7.0 466.0

(13'RT oil edge) 8.2
10'LT

6.5
10'RT

+50 7.1 465.9

8.3
10'LT

6.3
10'RT

3+00 7.1 465.9

edge oil 8.6
13'LT 10'LT

6.8
10'RT

+50 7.7 465.3

+78 7.9 465.1

east edge AC pave 70th st

4+03 8.52 464.5

west edge AC pave 70th st

+09⁹² 7.6 465.4

west prop line 70th st

7.97 465.01

Turn on 1/2" iron pin 10'LT 3+69⁷²

70th St Colony Rd
to Amherst

Transit Line 10' Rt of & on & of irrigation Dist Line

West
Williams
Kellhofer

7
4/19/64

6+55¹³

North prop line Amherst

70th
6+20¹²

Amherst
= 0+76²²

Top

70th

0+50

Colony Rd

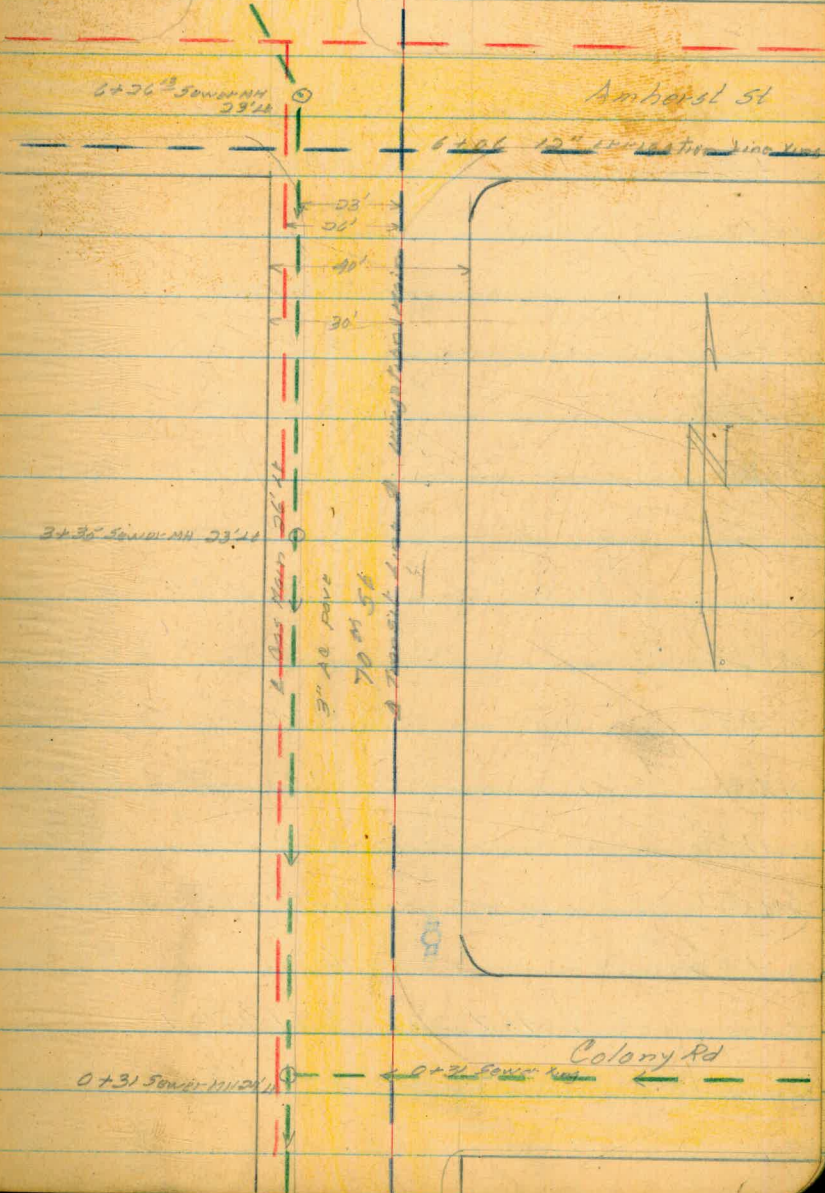
= 3+79²¹

Top

95° 30' 30" Rt

0+00

South prop line Colony Rd



Profile 70th

	7.53	472.54	465.01
0+00	8.84		463.7
+50	7.97		465.1
1+00	6.01		466.5
+50	5.41		467.1
2+00	5.21		467.3
+50	5.97		467.1
3+00	6.50		466.0
+50	7.05		465.0

	1.80	466.66	7.68	464.86
4+00	2.00			463.7
+50	4.04			462.6
5+00	4.92			461.8
+50	5.61			461.0
6+00	6.29			460.4
+50 ¹²	6.6			460.1

	6.77	467.22	6.21	460.15
			2.96	464.26

Turn on 1/2" iron pin see page #6

9.18	8.9	
20'LT	10'LT	South prop line along
7.79	7.39	
20'LT	10'LT	
6.87	6.37	
20'LT	10'LT	
(6.13)	5.63	
21'LT edge AC	10'LT	
(6.09)	5.16	
22'LT edge AC	10'LT	
6.54	5.86	
21'LT edge AC	10'LT	
7.15	6.58	
22'LT edge AC	10'LT	
7.87	7.12	
21'LT edge AC	10'LT	

3.14	2.56	
21'LT edge oil	10'LT	
4.26	3.66	
21'LT edge oil	10'LT	
5.1	4.67	
20'LT edge oil	10'LT	
5.88	5.43	
21'LT edge oil	10'LT	
6.64	6.04	
25'LT edge oil	10'LT	
7.14	6.8	
20'LT	10'LT	Amherst North prop line

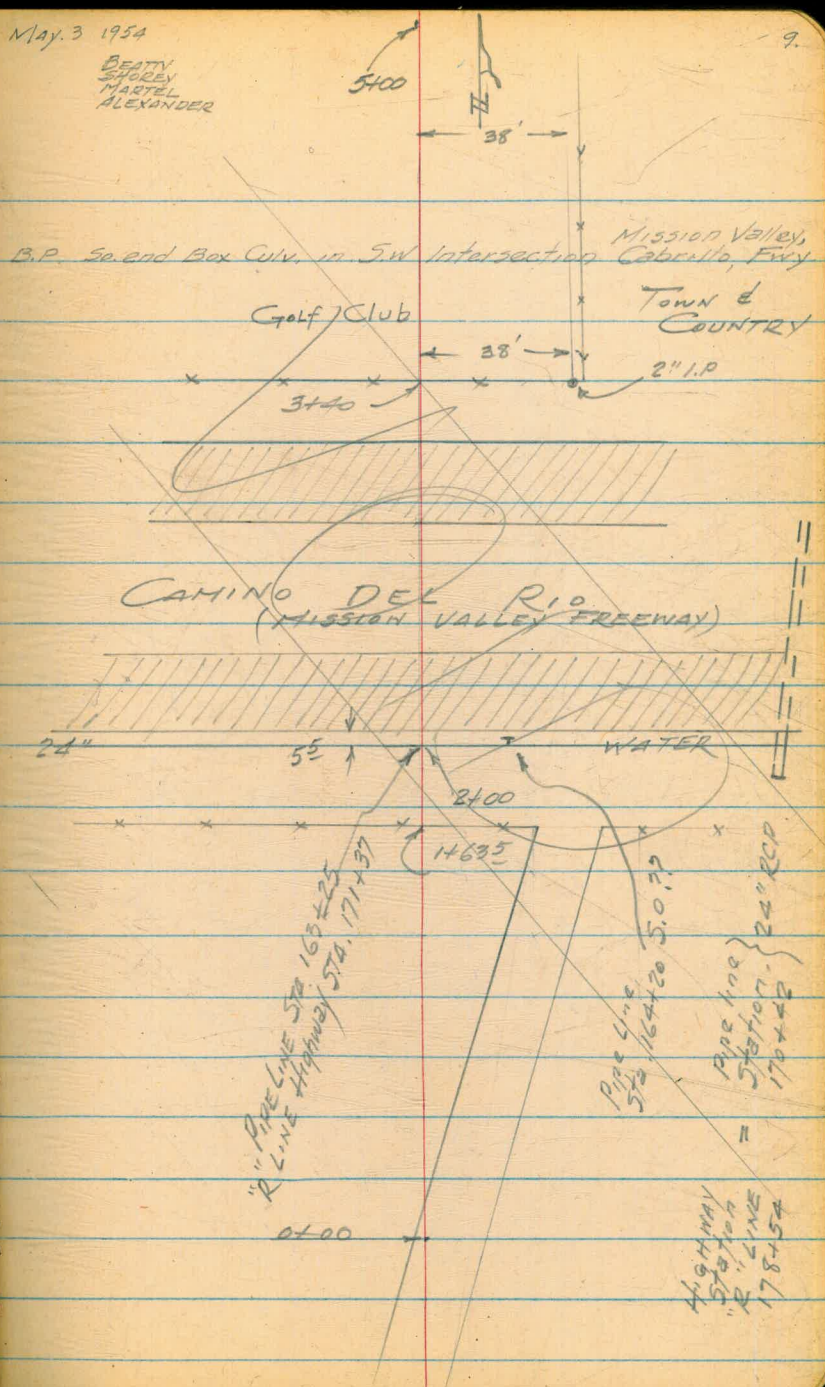
464.26 BP SW Cor 70th + E/ Cajon

950 CAMINO DEL RIO
(MISSION VALLEY FREEWAY)
& Profile for 8" FIRE SERVICE

BM	6.25	29.95	23.70
TP	0.40	24.69	5.66 24.29
TP	0.00	21.62	3.07 21.62
0700			9.5
0750			10.2
1700			10.6
1750			10.6
1765			10.8
17635	} at Sly Dry Fence		10.3
17635			9.9
1780	Top slope		10.0
1785			7.8
1793	Shld Rd		7.1
1795	Edge AC Berm		2.9
1796	Top AC Berm		2.8
17975			3.1
2700	& 24" RCP WATER		3.0
270550	Edge Conc Pavt		2.85
27275	Edge Conc Pavt		2.59

May. 3 1954

BEATTY
SHOREY
MARTEL
ALEXANDER



950 CAMINO DEL RIO
Cont'd

5/3/54

10.

2+45 on edge Conc gutter	2.39
2+46 ²⁰ Conc gutter	2.39
2+46 ⁵⁰ Top Conc Curb	1.90
2+47 Top Conc Curb	1.90
2+47 (dirt)	2.1
2+52 ⁵ Edge A.C	2.60
2+54 ⁵ Edge Conc Pavt	2.63
2+76 ⁵ Edge Conc Pavt	2.81
2+90 ⁵⁰ on A.C	2.95
2+91 Top A.C Berm	2.66
2+92 Top A.C Berm	2.69
2+92 ⁴ Edge A.C Berm	3.1
2+95 Shldr. of Road	3.2
3+00	5.6
3+10	8.2
3+20	9.7
3+26	12.5
3+32	12.1
3+36	9.1

950 Camino Del Rio

Cont'd

21.62

3+40 at Nly Bdy fence 8.9

3+50 Edge golf green 9.4

4+00 " " 9.2

4+50 " " 8.9

5+00 " " 9.0

SET TBM 4.68 8.78 12.84

ID 6.62 0.83

ID 8.05 2.51

CK BM not found 5.23 23.62 = 23.67

5/3/52

11

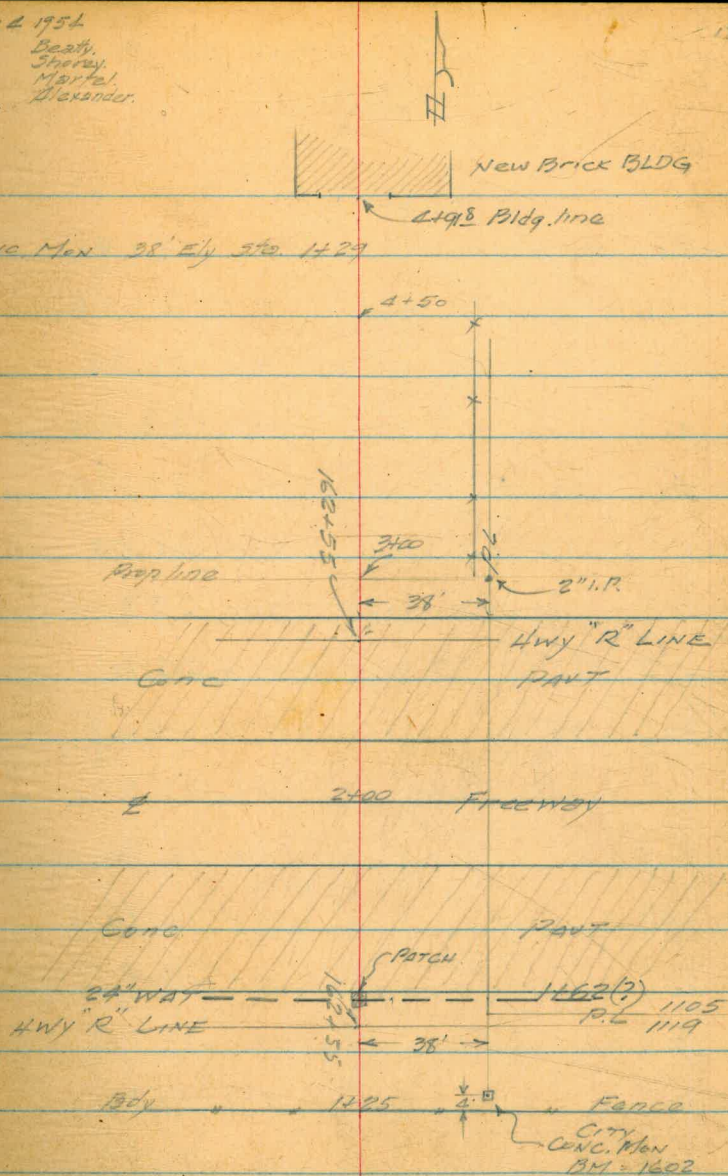
on 2" I.P. Nly prop line. Division between
Town & Country and
Golf Course

950 CAMINO DEL RIO
Mission Valley Freeway
& Profile for 8" Fire SERVICE

BM	9.34	25.36	16.02
0+00	= 200' Jct. E	8.3	17.06
	MISSION VALLEY Freeway		
0+50		9.1	16.26
1+00		9.2	16.16
1+21		9.8	15.5.6
1+25	} @ Div. Fence of Freeway	9.0	16.36
1+25		8.7	16.66
1+36		8.7	16.66
1+45		5.8	19.56
1+48		3.2	22.16
1+50		2.8	22.56
1+53.5	Edge A.C. Berm	2.3	23.06
1+54.5	Top A.C. Berm	2.0	23.36
1+55	" " "	2.0	23.36
1+56	on A.C. Shldr.	2.47	22.89
1+64.3	Edge Conc Pavt.	2.24	23.12
1+86.3	" " "	2.06	23.30
1+88.3	Edge A.C. Shldr	2.10	23.26
1+88.5	(dirt)	2.3	23.06

May 2 1954
Beatty,
Shroy,
Marfel,
Alexander.

Conc. Man 38' by 5' to 1+29



23.16
17.06
27.11

01.00

13.8

22.11

950 CAMINO DEL RIO

(Cont'd.)

5/2/50

13

25.36

2+00	4 (dirt)	3.4	21.96
2+12	Edge A.C. Shldr	2.11	23.25
2+14	Edge Conc. Pavt	2.13	23.23
2+36	" " "	2.26	23.00
2+50	on A.C. Shldr	2.66	22.70
2+56	on A.C. Shldr	2.73	22.63
2+56.7	Top A.C. Berm	2.40	22.96
2+57.0	" " " "	2.40	22.96
2+57.3	Edge A.C.	2.73	22.63
2+64		3.1	22.26
2+74.5		8.4	16.96
2+77		8.5	16.86
2+84		12.5	12.86
2+87		12.6	12.76
2+96		8.3	17.06
3+00		8.4	16.96
3+04	Edge A.C. ^{Parking Area}	9.90	15.46
3+06	on A.C.	10.14	15.22
3+09	on A.C.	10.07	15.29

2-WAT METS. - A'RT

2+60
2+63

2+63	4	□
2+60	4	□

950 CAMINO DEL RIO

5/2/54

(Cont'd)

25.36

3+50 on A.C.

9.80 15.56

4+00 on A.C.

9.14 16.22

4+50 on A.C.

8.74 16.62

4+91.8 " "

8.52 16.84

OK BM

9.34 16.02

950 CAMINO DEL RIO
 (4) GRDS FOR 8" FIRE SERVICE

May 17 1954
 Beatty
 Shorey
 Martell

(W-6381)

BM.	8.30	24.32	16.02			(See pg 12)
0+62 SOUTH	VERT. TEE	7.2	17.1	12.2		c29
0+62	" 90° BEND		17.1	16.6		c05
0+43	" 8" S.O.	1.4	22.9	16.6		c63
0+43	" Bottom 12" ENC		22.9	11.8		c112
0+43	" Bottom 8" C.I.		22.9	12.0		c107
0+00	North & So.	2.2	22.1	11.5		c106 8" C.I. c108 12" ENC
0+40	North Bottom 12" ENC	1.3	23.0	10.8		c122
0+40	" Bottom 8" C.I.		23.0	11.0		c120
0+56	" " " "	1.7	22.6	11.0		c116
0+78	" Bottom 12" ENC	8.1	16.2	10.8		c54
0+78	" " 8" C.I.		16.2	11.0		c52
0+90	" Bottom of ditch	11.6	12.7			
0+90	" Bottom 12" ENC	10.4	13.9	10.8		c31
0+90	" Bottom 8" C.I.		13.9	11.0		c29
1+00	" " " "	7.9	16.4	11.1		c53
1+50	" " " "	8.7	15.6	11.7		c39
1+80	" 8" TEE	8.3	16.0	12.0		c40
	90° Bend 12' East	8.2	16.1	12.0		c01
E FH		7.9	16.4	12.4		c40

950 Camino Del Rio
Cont'd.

6/30/54

16

TD	5.10	21.1	16.00		
1485	(2) 8" TEE	5.1	16.0	12.0	C40
2+00	(2) E pipe @ Cham.	4.9	16.2	12.0	C42
1489	(2) SLY	5.1	16.0	12.0	C40
2+15	(2) SLY	4.8	16.3	12.0	C43
2+15	(3) ELY	4.6	16.5	12.0	C45
2+30	E FH (3) ELY	4.5	16.6		C41
	(5) FH NLY	4.5	16.6		C02 C41

Amherst St
70th to 71st

Stks for CAC 170.00

	2.95	467.21	469.26
0+40	7.5	458.7	456.2
+50	7.1	460.1	456.0
+72	7.0	460.2	455.8
1700	7.1	460.1	455.7
+50	6.3	460.9	456.3

7.67 470.70 4.18 463.03

2+00	8.9	461.8	456.8
+50	8.3	462.4	457.5
3700	7.4	463.3	458.2
+50	6.2	464.5	458.7
4+10	4.8	465.9	459.4
+50	4.3	466.1	460.1
7692	4.1	466.6	460.3

West
Williams
Varonakis
Kullbacker

17

716154

SW BP 70th + El Cajon

C3 $\frac{5}{}$

C4 $\frac{1}{}$

C4 $\frac{4}{}$

C4 $\frac{4}{}$

C4 $\frac{6}{}$

Too

C5 $\frac{0}{}$

C4 $\frac{9}{}$

C5 $\frac{1}{}$

C5 $\frac{8}{}$

C6 $\frac{5}{}$

C6 $\frac{3}{}$

C6 $\frac{3}{}$

71st 56 Amberst St
to Colony Rd

Stks for 6" AC

470.70 from page 17

0+00		40	466.7	460.3	C6 $\frac{4}{}$	
+50		3.4	467.3	460.7	C6 $\frac{6}{}$	
+80		2.1	468.6	462.2	C6 $\frac{4}{}$	
+80		2.2	468.5	466.0	C2 $\frac{5}{}$	
1+00		1.7	469.0	463.2	C5 $\frac{8}{}$	
+50	7.26	477.08	0.98	469.2	464.9	CA $\frac{2}{}$
2+00		6.7	470.4	465.8	C4 $\frac{6}{}$	
+50		6.4	470.7	466.2	C4 $\frac{5}{}$	
3+00		5.9	471.2	466.7	C4 $\frac{5}{}$	
+50		5.2	471.9	467.2	C4 $\frac{7}{}$	
4+00		4.5	472.6	467.4	C5 $\frac{2}{}$	
+50		4.9	472.2	466.9	C5 $\frac{3}{}$	
5+00		6.8	470.3	465.5	C4 $\frac{8}{}$	
+50		8.8	468.3	463.4	C4 $\frac{9}{}$	
6+00		10.5	466.6	462.2	C4 $\frac{4}{}$	
+12 ⁵⁹	5.97	471.57	10.98	466.10	461.8	C4 $\frac{3}{}$

West
Williams
Vorontakis
Rullhofer

18

716/54

KH Tea

(37) @ 511

Colony Rd 71st to 70th
5th 6" AC Mann

West
Williams
Varanfakis
Kallhofer

19

718154

471.57 From page 18

0+29⁹⁴

5.7 465.9 461.8

C4 ¹

+50

6.2 465.9 461.8

C3 ⁶

+75

6.4 465.2 461.8

C3 ⁴

+75

5.3 466.3 465.4

C0 ²

FH Tee

⊙ FH 11' from prop
⊙ FH as per Ralph
Borden

+100

6.4 465.2 461.7

C3 ⁵

+50

6.5 465.1 461.7

C3 ⁴

+00

6.6 465.0 461.7

C3 ³

+50

6.5 465.1 461.7

C3 ⁴

+00

5.1 466.5 461.7

C4 ⁸

+50

6.8 464.8 461.6

C3 ²

+78

6.24 471.15 6.66 464.9 461.6

C3 ³

70th St Colony Rd
to Amherst St

Sigs for 6" AC

471.15

0+50	6.0	465.2	461.6
+80	5.4	465.8	462.1
+80	4.6	466.6	465.6
1+00	5.0	466.2	462.4
+50	4.3	466.9	463.3
2+00	4.1	467.1	463.2
+50	4.5	466.7	463.2
3+00	5.2	466.0	462.1
+50	6.0	465.2	461.0
4+00	7.1	464.1	460.0
+50	8.2	463.0	458.9
5+00	9.1	462.1	457.9
+50	6.08	467.29	9.91 461.21 456.9
6+00	6.7	460.6	455.9
	306	464.23	464.26

West
Williams
Varon Pakke
Kellhofer

20

7/6/59

C3 $\frac{6}{1}$

C3 $\frac{7}{1}$

C1 $\frac{0}{1}$

C3 $\frac{8}{1}$

C3 $\frac{6}{1}$

C3 $\frac{9}{1}$

C3 $\frac{5}{1}$

C3 $\frac{9}{1}$

C4 $\frac{2}{1}$

C4 $\frac{1}{1}$

C4 $\frac{1}{1}$

C4 $\frac{2}{1}$

C4 $\frac{3}{1}$

C4 $\frac{7}{1}$

C4 $\frac{7}{1}$

464.26

FH 700

(5)

FH as per Ralph
Balaban

8² from prep

Congress + Hortensia St
Stks for Water Meters

Congress St 0700 East Prop

10.94 76.07 65.13

5.98 80.00 2.05 74.02

Water Meters East of Hortensia

0+23 4.9 75.1 74.3

+25 4.9 75.1 74.8

+72 4.0 76.0 75.2

+83 3.6 76.4 75.8

1+13 2.9 77.1 76.0

+14 2.7 77.3 76.6

+59 2.4 77.6 76.6

+62 ^{1.8}
1.6 78.4 77.2

Water Meters West of Hortensia

0+60 6.2 73.8 72.9

1+25 6.9 73.1 72.2

1+31 8.1 71.9 71.5

1+65 7.3 72.7 71.4

1+90 7.9 72.1 70.8

2+10 7.5 72.5 70.5

+35 7.6 72.4 70.1

West
Williams
Varonakis
Kellhofer
Lure Hortensia 7/9/54

911 HT W ab of San Diego Ave & Hortensia

CO $\frac{8}{3}$ WMS

CO $\frac{3}{8}$ WMN

CO $\frac{8}{6}$ MMS

CO $\frac{6}{1}$ MMN

CI $\frac{1}{7}$ MMS

CO $\frac{7}{0}$ WMN

CI $\frac{0}{2}$ WMN

CI $\frac{2}{9}$ WMN

CO $\frac{9}{4}$ WMS

CO $\frac{4}{3}$ WMN

CO $\frac{3}{3}$ WMS

CI $\frac{3}{0}$ WMN

CI $\frac{0}{3}$ WMN

CO $\frac{3}{0}$ WMN

CO $\frac{0}{3}$ WMN

Hortonsia 56
Meters

0+00 South prop. line Congress

80.00

2+63 7.4 72.6 69.4

C3 $\frac{2}{5}$

WM N

2+93 7.6 72.4 68.9

C3 $\frac{5}{4}$

WM N

3+13 8.1 71.9 68.5

C3 $\frac{4}{7}$

WM N

4+1 8.3 71.7 68.0

C3 $\frac{7}{2}$

WM N

12.95 8.558 7.37 72.63
Hortonsia North of

1+48 +4.5 90.1 81.5

Congress 6
C8 $\frac{6}{2}$

WM E

0.26 76.55 9.29 76.29

1+22 6.9 71.7 70.3

C1 $\frac{4}{3}$

WM E

+52 8.9 67.7 69.0

F1 $\frac{3}{7}$

WM W

2+06 6.9 69.7 68.0

C1 $\frac{7}{2}$

WM E

11.44 65.71 = 65.13

West
Williams
Varon Falls
Kettbober

54

6.0
1.0
4.5
5

74

22

Profile & Proposed 12" Feeder
Main Murlands

Wert
Varonakis
Kellhoffer
Williams

23

7-19-54

0+00 M.H. Air Valve Existing 12"

Water 2' Lb.

+02.5

G.V. 2' Lb.

+21.50

B.C. 1" iron pipe 0.3 Lb. of ϕ

1+68.66

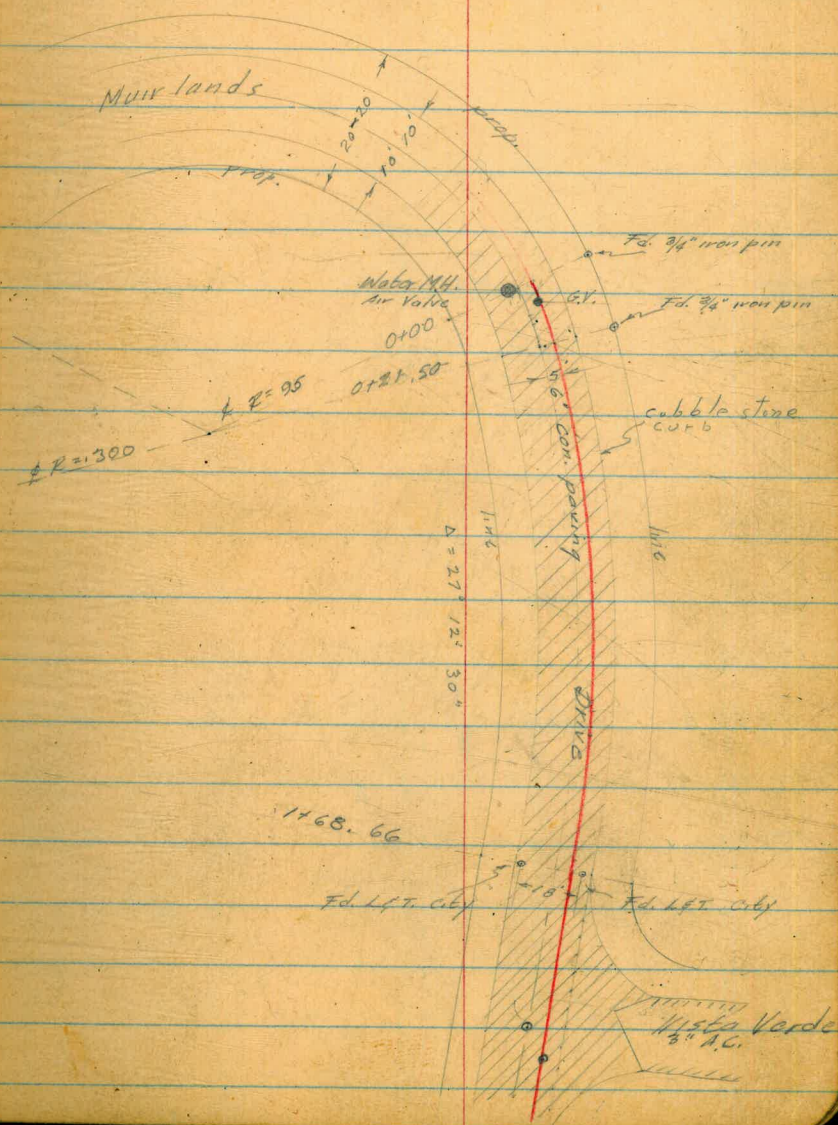
E.C.

2+11

Gas cover

2+10

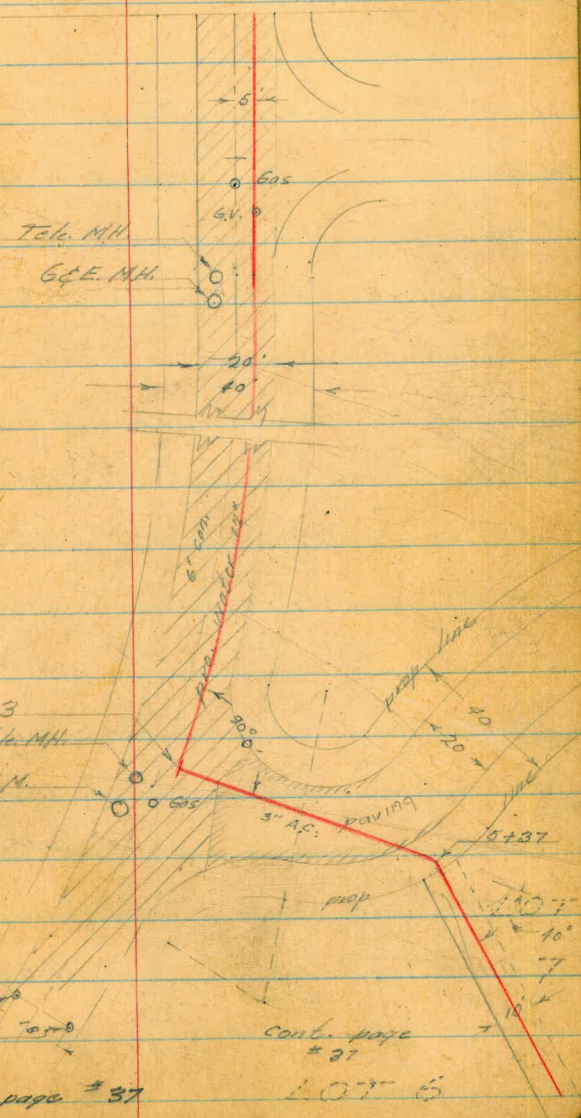
G.V. 5' Lb.



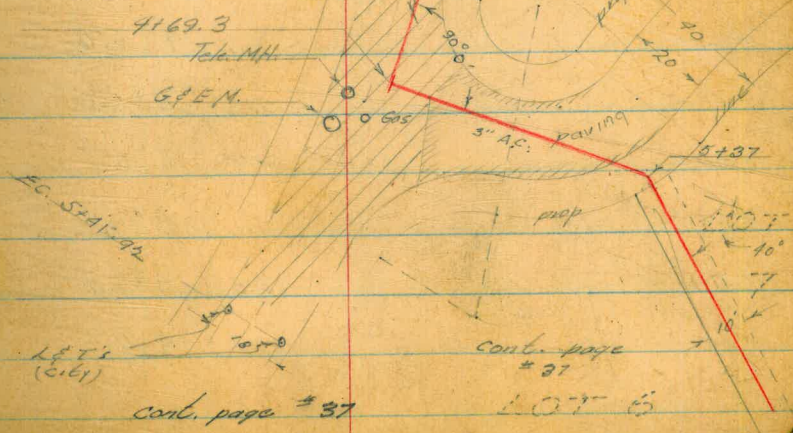
Profile Murlands Feeder

B.C.C. 1768.66

- 2+11 Gas Cover
- 2+18 G.V. 5' Lt
- 2+29 Tele. M.H. 5' Rt 5'x5'x9' con. box
- 2+35 G&E M.H. 6' Rt 5'x5'x9' con. box



- 4+69.3 Angle point, Existing Tee
- 4+77.3 Tele. M.H. 5'x5'x9' con. box, 5' Rt
- 4+79.3 Gas cover 1' Lt
- 4+83.2 G&E M.H. 5'x5'x9' con. box 6' Rt



LETI (E.67)

cont. page # 37

cont. page # 37

LOT 6

Profile Murrelands 12" line

			418.33	
			399.39	
	10.91		429.24	
			410.30	
0+00		8.7	420.54	
+00		9.1	420.14	
+09.5		8.0	421.24	
+50		5.5	423.74	
+100		1.9	427.34	
			428.91	
T.P.		0.33	409.97	
	12.96		441.37	
			422.43	
+150		10.1	431.27	
+200		6.4	434.9	
+11		5.7	435.6	
+18		5.3	436.0	
+29		4.5	436.8	
+35		4.1	437.2	
+41		3.6	437.7	
+50		2.8	438.5	

B.P. in base lamp post

Air valve chamber 7' Rt.

G.H. 2.8 Rt.

Gas cover 5' Rt.

G.H. on line

Tele. MH. 9' Rt.

G.P.E. MH. 10' Rt.

F.H. 70' Lt.

Note: Used wrong elevation
on starting B.M. corrections in red.

Profile of Highlands

496.37
422.13

0.26 491.11
422.17

11.22 452.33
433.39

3700 10.3 492.03

450 6.8 445.53

4100 3.3 449.03

77 0.24 452.09
433.15

7.91 460.00
441.06

4150 7.5 452.50

4169.3 6.3 453.70

1.74 458.26
439.32

11.15 469.41
450.97

4180 15.5 453.91

5400 14.5 454.9

429 12.7 456.7

137 8.6 460.8

449.50 3.1 466.3

0.60 468.81
449.87

10.01 478.82
459.88

Feeder line Cont.

Angle point

Edge 6" con. pavement, start AC paving

So. edge of pavement & toe of slope

Angle point in line

So. prop line 5' No., Center 10' easement

Profile of Murlands Feeder

12" line Cont

478.82

459.88

5+55.08

5.8

473.02

Top slope

476.47

2.35

457.53

486.97

10.50 468.03

6+06.89

12.4

474.5

Ground

" " "

10.3

476.6

Top stone terrace

6+10

10.5

476.4

" "

9.3

477.6

6+14

9.4

477.5

"

8.0

478.9

6+18

8.0

478.9

"

7.3

479.6

6+22

7.2

479.7

"

5.8

481.1

6+35

5.2

481.7

"

4.1

482.8

486.51

0.46

467.57

497.60

11.09 478.66

Profile of Mourlands 12" line

	497.60		
	478.66		
6150		12.6	487.0
6498.14		2.2	495.4
			495.01
		2.59	476.07
	507.01		
12.00	488.07		
6498.14		11.6	495.4
7150		1.7	505.3
			506.70
		0.31	487.76
	519.26		
12.56	500.32		
8100		5.0	514.2
			518.93
		0.33	499.99
	531.31		
12.38	512.37		
8130.99		11.5	519.8
			529.25
		2.06	510.31
	538.83		
9.58	519.89		
8150		12.0	526.8

Prop. line of lot 6 5' No., center 10' easement
Set T.B.M. on SE. cor. lot 6. 1" pipe

Angle point

East prop. line lot #1

Profile of Maryland Feeder

Line Cont.

	538.83		
	519.89		
8+55.99		11.5	527.3
8+80.90		10.4	528.4
9+30.90		6.7	532.1
9+80.90		3.3	535.5
			538.07
		0.76	519.13
	550.40		
12.33	531.46		
10+30.90		12.6	537.8
+50		11.3	539.1
11+00		7.6	542.8
+50		5.2	545.2
11+82.05		3.7	546.7
		0.82	549.7
			549.78
			530.84
	555.44		
5.66	536.50		
12+00		8.0	547.4
+50		5.5	549.9
13+00		2.5	552.9

Angle point B.C.

F.C.

B.C.

Set T.B.M. S.W. of road power guy pole

Profile Muirlands Feeder Line

	555.44			
	536.50			
T.P.		0.15	555.29	
			536.35	
	559.79			
4.50	540.85			
13+50		4.3	555.4	
13+70.11		4.1	555.6	F.C.
13+71.52		4.0	555.7	B.C.
14+00		4.4	555.3	
+25		4.9	554.8	
+50.27		4.4	555.3	F.C.
T.P.		4.39	555.90	
			536.96	iron pin 25 So. F.C.
	563.91			
8.01	544.47			
15+00		7.1	556.3	
+50		5.0	557.6	
+99.38		4.3	559.1	B.C.
T.P.		1.76	561.65	
			542.71	nail in So guy pole
	572.96			
11.31	554.02			
16+50		13.6	559.3	

PROFILE OF MUIRLAND FEEDER LINE CONT.

LEFT

RIGHT

572.96
554.02

17+00 116 561.3

+46.46 2.0 563.9

E.C.

18+00 7.5 565.4

+50 7.2 565.7

19+00 6.5 566.4

+38.27 4.5 568.4

B.C.

+50 3.6 569.3

81	43	46
51	51	70
73	43	42
51	31	41
56	31	23
51	31	81
42	26	25
51	31	81

T.P. 1.50 571.44
552.50

575.19
3.75 556.25

20+00 3.6 571.5

+50 3.6 571.5

21+00 4.5 570.6

+48.14 4.5 570.6

E.C.

22+00 4.9 570.2

+50 5.3 569.8

23+00 5.6 569.5

PROFILE OF MIDLAND FEEDER LINE CONT.

	575.19		
	556.25		
T.P.		5.62	569.57
			550.63
	573.79		
422	554.85		
23+31.03		4.3	569.4
+50		4.1	569.6
23+89.32		3.9	569.8
24+00		4.0	569.7
+50		3.9	569.8
25+00		3.8	569.9
+50		4.1	569.6
26+00		4.7	569.0
T.P.		5.84	567.95
			549.01
	570.92		
2.97	551.98		
26+50		3.6	567.3
27+00		4.1	566.8
+50		4.1	566.8
28+00		3.9	567.0
+50		3.8	567.1

BC

± 42°28' RIGHT

±

PROFILE MUIRLANDS FEEDER

LINE CONT.

	570.92 551.98		
29+00		7.2	566.7
+50		5.2	565.7
T.P.	568.67 566.79	5.19	565.73 546.79
	2.96 549.75		
29+62.36		3.3	565.39
30+00		4.5	564.1
+50		5.1	563.5
31+00		4.6	564.0
+50		4.0	564.69
32+00		3.7	565.0
+50		3.8	564.8
	564.77 562.87	1.50	564.19 562.29 545.25
	0.58 545.83		
33+00		0.8	563.9
+50		2.1	562.6
34+00		4.3	560.4

2" pipe NW prop cor. St George lot

Angle point

Profile of Murland's Feeder Line

564.72
~~522.87~~
 545.83

34+50 6.3 558.4

35+00 8.9 556.3

+50 11.0 553.7

35+79.54 12.6 552.2

+83 12.8 551.9

36+09.54 12.7 552.0

+17 12.7 552.0

36+29.54 14.00 550.77

531.83

~~553.97~~

11.30 539.53

564.72

~~542.82~~

11.25 545.78

T.P. 3.25 561.47 ✓

~~542.53~~

5.00 566.97 ✓

547.53

~~562.98~~

565.73 ✓

T.P. 0.74 546.79

7.39 573.12

554.18

561.33

T.P. 3.39 569.73 ✓

550.79

5.45 575.18

556.24

361.04

571.50 ✓

3.68 552.56

0.60 572.11

553.16

Line

Off of La Jolla Rancho

gutter

⊥

So. edge 1" K.C. paving

S/L La Jolla Rancho, spike on prop line

Set T.B.M. on driveway

ERASURES MADE BY R. BARBER 11-26-54

Profile of Murland 12" Line

	572.1		
	553.16		
T.P.		11.99	560.16
	560.94		541.22
	0.78		
	542.00		
T.P.		12.10	548.84
	549.10		528.90
	0.26		
	530.16		
T.P.		12.38	536.72
	537.14		517.78
	0.92		
	518.20		
T.P.		12.79	524.35
	524.71		505.41
	0.36		
	505.77		
T.P.		12.69	512.02
	512.15		493.08
	0.13		
	493.21		
T.P.		12.94	499.21
	500.25		480.27
	1.04		
	481.31		
T.P.		8.87	491.38
	492.17		472.44
	0.79		
	473.23		
T.P.		12.84	479.33
	479.54		460.39
	0.21		
	460.60		
T.P.		12.58	466.96
	467.88		448.02
	0.92		
	448.94		

Profile Murlands 12" line

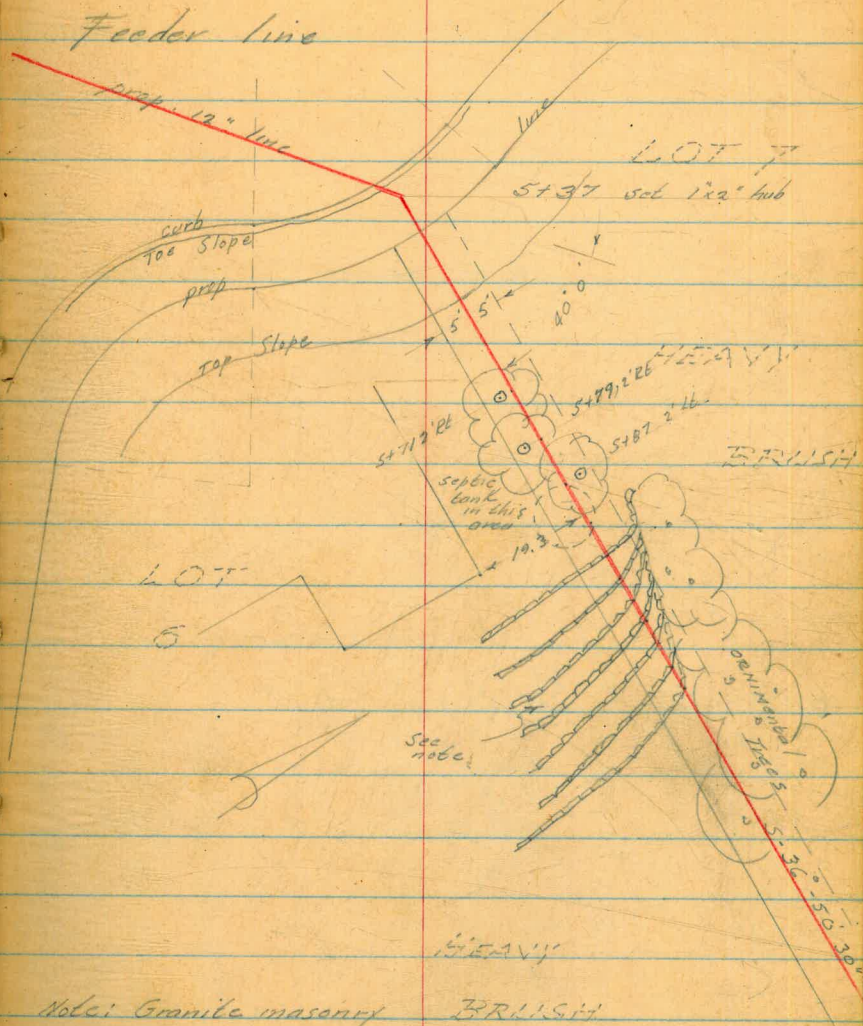
467.88
~~448.94~~T.P. 2.67 458.21
~~439.27~~0.99 458.65
~~439.71~~12.87 445.78
~~426.84~~0.03 445.81
~~426.87~~12.21 433.60
~~414.66~~0.04 433.64
~~414.70~~13.07 420.57
~~401.63~~8.01 428.58
~~409.64~~10.32 418.26
~~399.32~~

T.B.M. F.H. Murlands & El Paso Real - 439.32

418.26
B.P. Lamp post base Fl. 399.39

Profile of Murlands 12"

5437 Angle point in line
 5455 Top of Slope
 6400 East line of house
 6407 First rock terrace



Note: Granite masonry
 flower bed, terraced with
 sprinkler system on each
 terrace

Profile Muirlands 12" Feeder Line

6+98.14

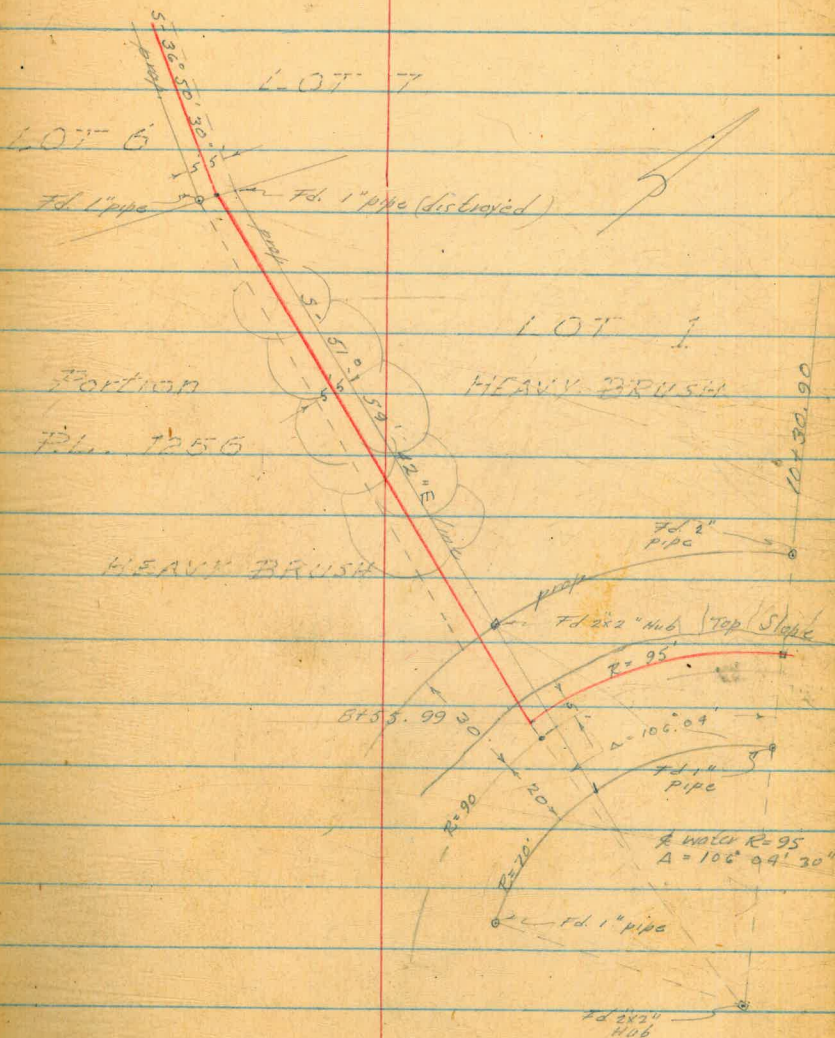
Angle point set 1 1/2" hub

8+30.99

E/L of Lab #1

8+55.99

Angle point in line

Set spike on ϕ post at ϕ water

Profile Murrland 12" Feeder Line

10+30.90

E.C., set 1 1/2" hub & water

10+30.90

7.1" pipe

2 1/2" pipe

← 20' → ← 30' →

← 15' →

M

M

W

W

11+82.05

B.C. Set spike & water

11+82.05

7.1" pipe

& water E=909.70
 $\Delta = 26^\circ 37' 23''$

prop line
 & Road prepared
 Top Slope
 water line

13+70.11

E.C. Set spike

13+71.52

B.C. Set spike

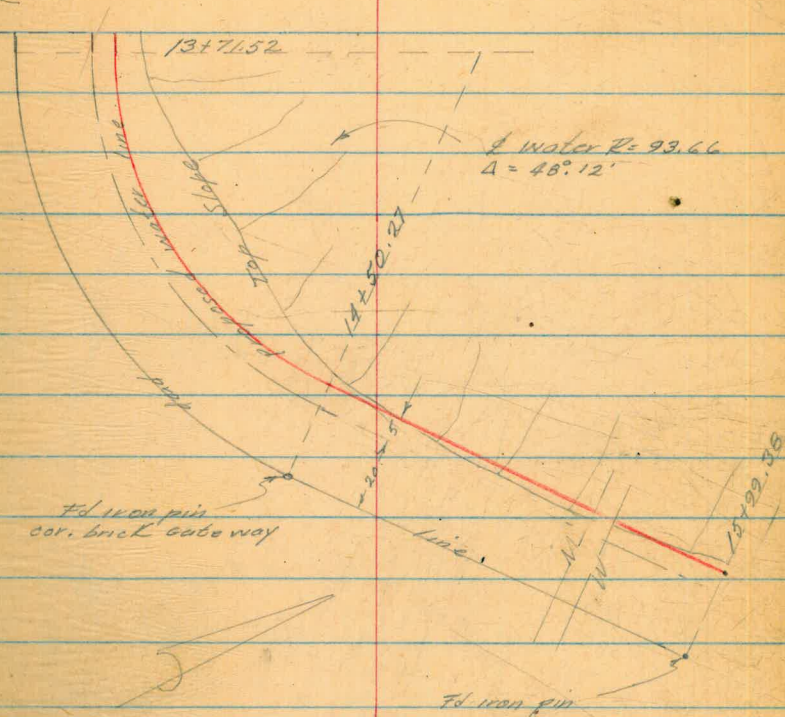
13+70.11

Profile Murrlands 12" Feeder

13+71.52

B.C. set spike & water

Line

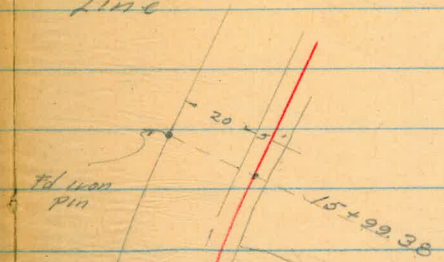


15+99.38

B.C. set spike & water

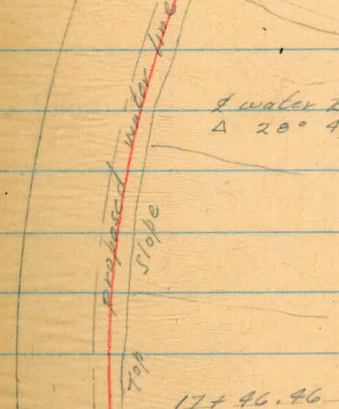
Profile Muirlands 12" Feeder line

15+99.38 B.C. Set spike & water



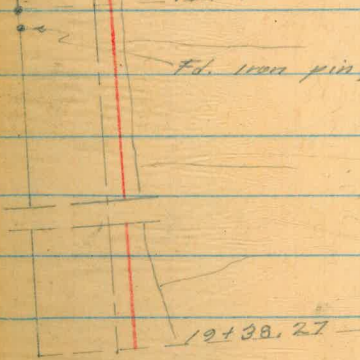
of water $R = 293.78$
 $\Delta 28^\circ 41'$

17+46.46 E.C. Set spike & water



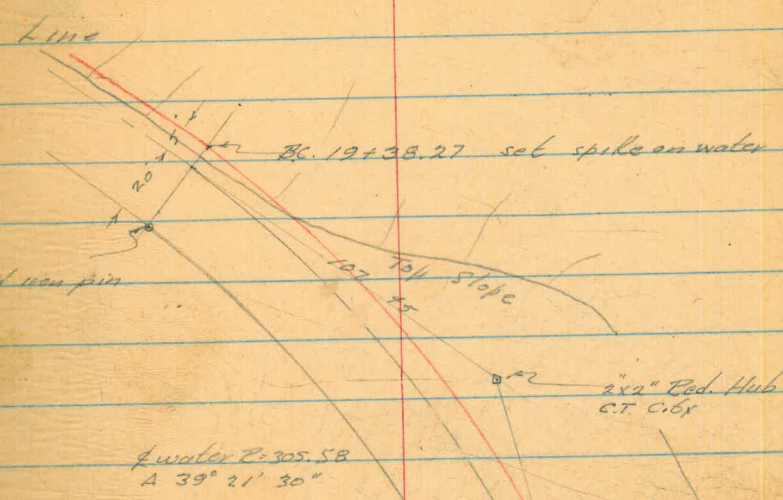
Fd. iron pin, Adjusted curve, Book 1731
page 32

19+38.27 B.C. Set spike & water



Profile of Muirlands 12" Feeder

19+30.27 B.C. set spike



21+48.14 E.C. set spike



23+31.03 B.C. set spike



Profile of Muirlands 12" Feeder Line

A ADJUSTED TO FIT AREAS.
LENGTH OF CURVE

R.E. BARBER
12-27-54

23+31.03

B.C.

23+31.03

15°17'37"

A = ~~17.54~~
R = 251.23
(water)

23+89.32

E.C. and angle point water line

23+89.32

24+15.60

25+36.20

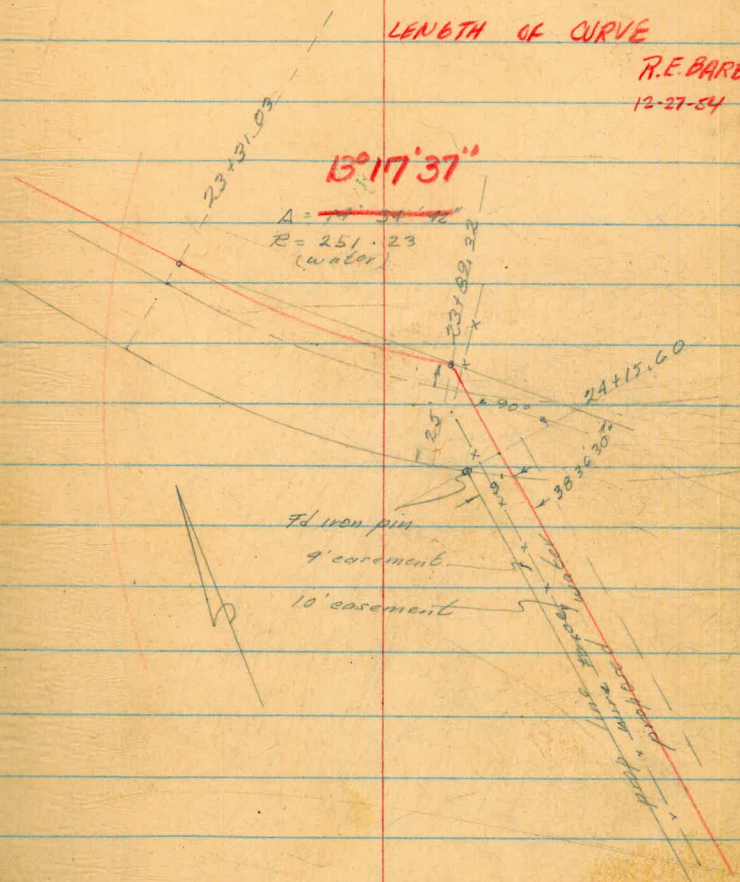
Fl iron pin

4' easement

10' easement

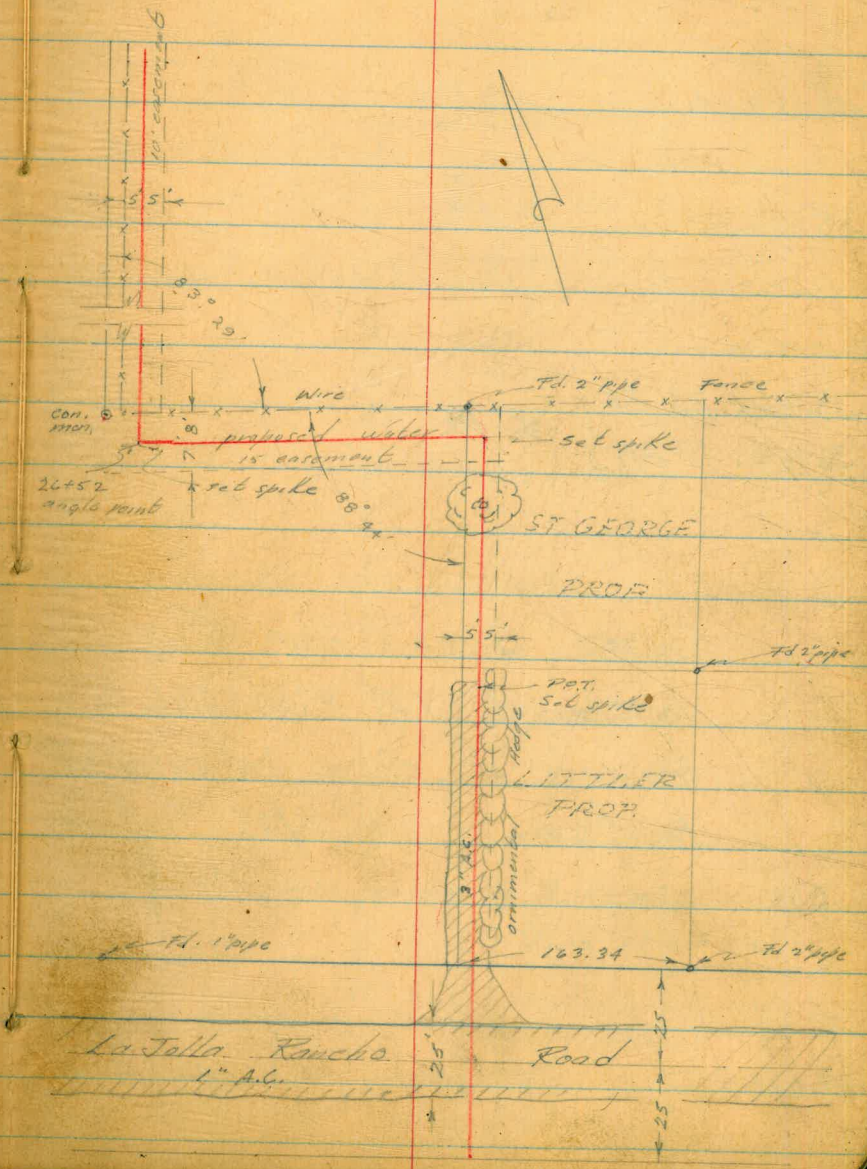


line shown is proposed
12" water main
with 4' easement



Profile of Muirlands 12" Feeder Line

- 26+98 con. mes.
- 26+52 Angle point water line
- 27+05 Power pole "C-cut 3' Rd.
- 29+62.36 Angle point in water line
- 29+87 6" brush on line
- 32+88.33 P.O.T., begin 3" x 10' Oil driveway
- 35+79.59 N/E of La Jolla Rancho Dr
- 36+29.54 S/E of La Jolla Rancho

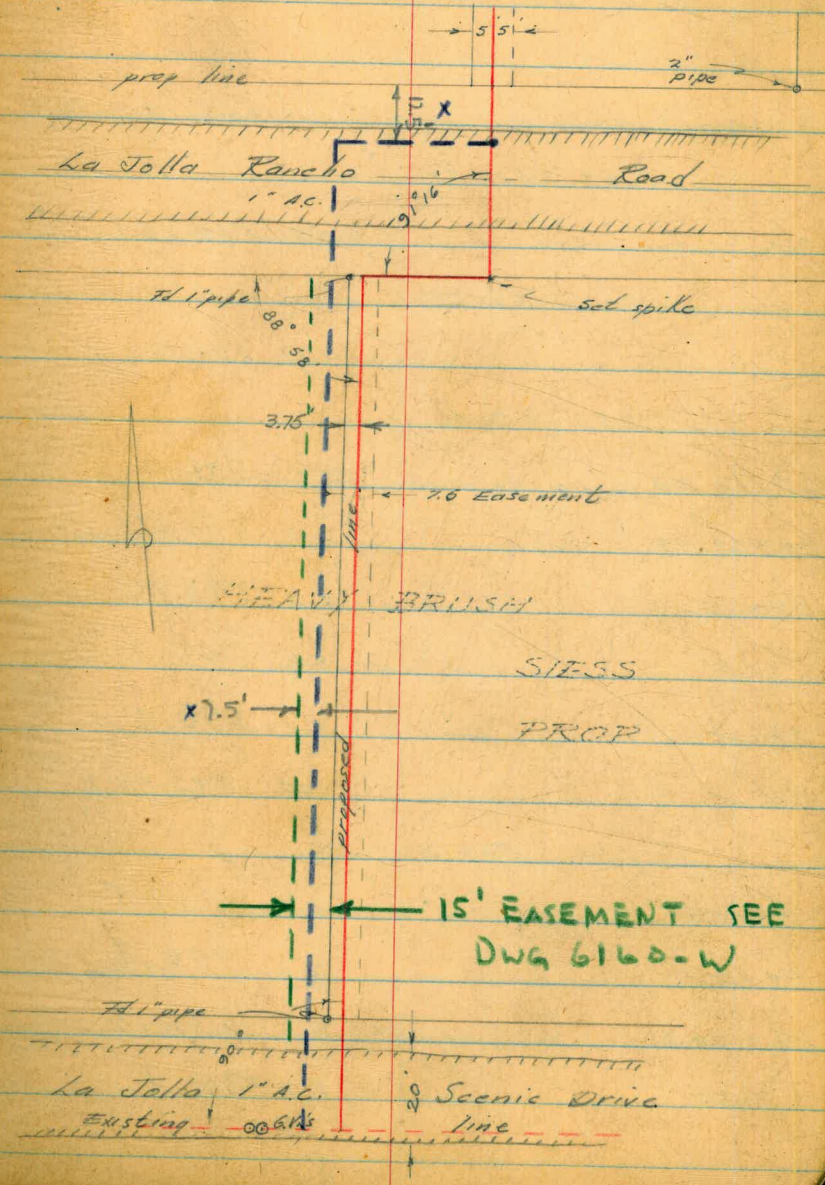


Muirlands 12" Feeder line Cont

- 35+79.54 N/L Rancho Rd
- 35+92.04 } 4 Pt. (
- 36+29.54 S/L Rancho Rd. Angle pt.
- 36+62.48 Angle pt.
- 36+36.23 BK } 4 Pt.
- 36+24.98 AH }

NOTE: Green & blue office location of 12" Pipe line because of error in easement location. 2/15/55 Jufferies

- 39+38.85 N/L Scenic Drive
- 39+74.92 Pl. proposed & existing lines



Muirlands 12" Feeder line

			565.72
	5.49	571.21	
T.P.		6.49	564.72
	0.67	565.39	
		13.13	552.26
	2.20	554.46	
36+29.54		3.4	551.06
36+62.48		3.4	551.06
37+00		5.7	548.76
+50		8.8	545.6
38+00		12.0	542.4
T.P.		12.07	542.39
	1.44	543.83	
38+50		4.3	539.5
39+00		7.0	536.8
39+38.85		8.5	535.3
+50		8.7	535.1

T.B.M. 2" pipe N.W. cor. St. George prop.

S/L of Rancho Rd. & angle pt. in line
Angle pt.

N/L of Scenic Drive

Muirlands 12" Feeder Cont.

593.83

39+54

8.6 535.2

No. edge 1" A.C. paving

39+79.92

9.1 534.7

Pl. of proposed and existing lines, & angle pt.

39+92.92

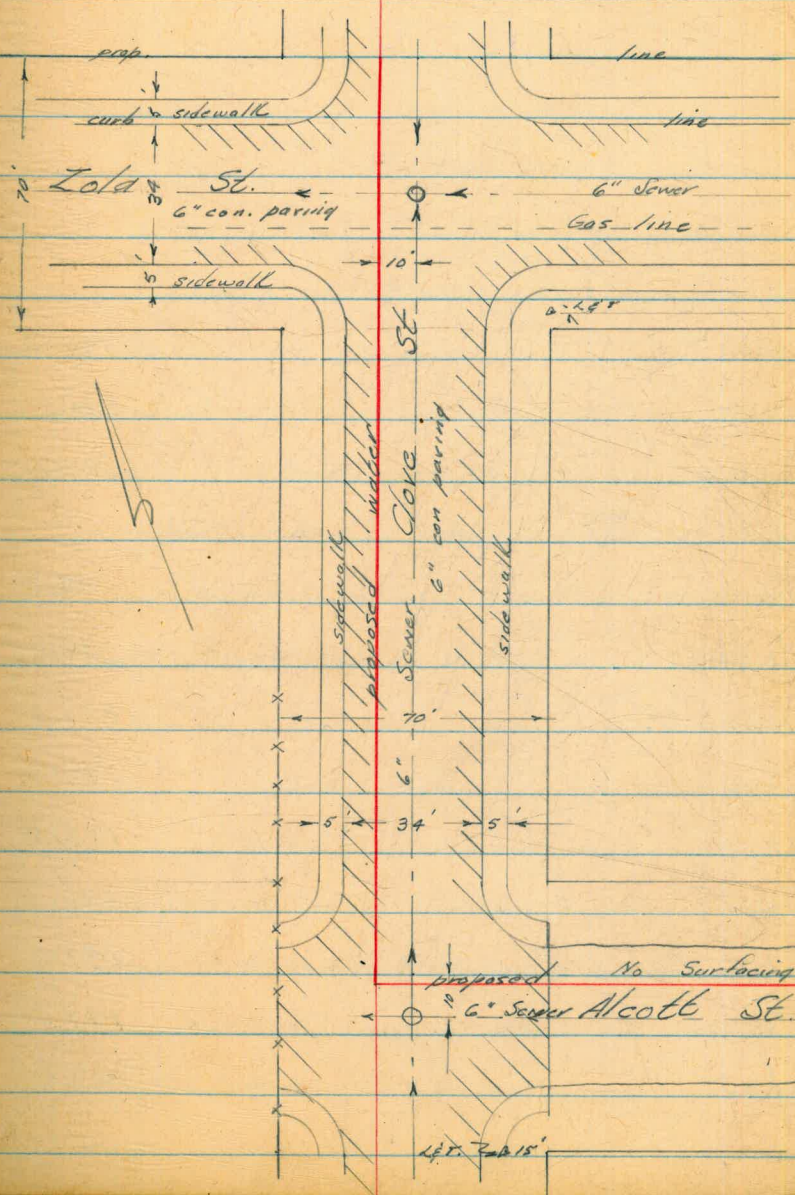
9.1 534.7

G.V.'s 18' Pl.

8-6-54

Profile of Proposed Water on Clove St.
Zola to Alcott St.

0+00	S/H Zola St.
+13	Back 5' sidewalk
+18	Curb line
+35	of Zola of 6" Sewer crossing
+46	Gas Crossing
+52	Curb line
+57	Back sidewalk
+70	N/H Zola
2+95	P.I. proposed water mains
3+05	of Alcott of sewer crossing



Profile of Clove Cont.

		161.50	B.M. BP. Zola & Chatsworth
2.39	163.89		
	12.02	151.87	
2.17	154.01		
0+00	7.7	146.3	S/H Zola
+18	8.3	145.7	S curb line Zola
+35	8.3	145.7	∩ Zola & Sewer crossing
+35	8.04	146.0	Sewer M.H. 10' 16" 5.8 to floor ^w
+46	8.8	145.2	Gas crossing
+52	9.2	144.8	N curb line Zola
1+00	8.8	145.2	
+50	8.6	145.4	
2+00	8.2	145.8	
+50	7.7	146.3	
+95	6.9	147.6	Pl. proposed water Clove & Alcott
3+00	6.3	147.7	
+05	6.2	147.8	Sewer crossing

Profile Clove Cont.

159.04

3105	6.02	148.0
+90	5.1	148.9
	5.92	148.12

Sewer M.H. 10' H. 4.7 to flow

N/E of Alcott

T.B.M. Water faucet on wire fence 15' So
of Alcott

Profile & Proposed Water on
Alcott St. Clove to 300 North

		148.12	
	11.79	159.91	
0+03		13.3	
+25		12.3	
+35		12.1	
+35		11.89	
+50		12.1	
+70		12.0	
1+00		10.4	
+50		9.4	
2+00		6.7	
+50		2.0	
3+00		+ 1.0	(hand level)
T.P.		6.86	153.05
	6.03	159.08	
T.P.		1.65	157.43
	7.81	165.24	
		371	161.53 =

T.B.M. Water faucet Alcott & Clove

Pl. proposed water lines Clove & Alcott

Sewer Crossing

Sewer M.H. 10' RT

End con. paving

161.50 B.P. on Chabsworth & Kola

Went
Kemp
Holahan

52

12-2-54

Level Circuit from St. George Property
to La Jolla Scenic Drive

B.M.

565.72

TBM 2" PIPE N.W. COR. ST. GEORGE PROP

4.60 570.32

5.59 564.73

0.66 565.39

11.85 553.54

0.62 554.16

11.14 543.02

0.56 543.58

8.16 535.42

4.59 540.01

2.37 537.64

7.75 545.39

CITY B.M. 544.15

2.24 543.15

SOUTH LAJOLLA RANCHO RD. & LAJOLLA SCENIC DR.

4.80 547.95

CITY B.M. 541.12

7.83 540.12

2" PROP. PIPE SE. COR. HOLT PROP.

12.02 552.14

552.19

0.78 551.36

12.28 563.64

3.17 560.47

0.59 561.06

7.80 553.26

10.20 564.06

4.70 559.36

7.76 567.12

1.36 575.76 = 565.70

CITY BM. 553.43 (554.98 original)

CON. MON. E. EDGE LAJOLLA SCENIC DR. N/2. P.L. 1774

TBM 2" PIPE N.W. COR. ST. GEORGE PROP

Level Circuit from St. George Prop
to Murlands Drive

B. M.

565.72

TBM 2" PIPE N.W. COR ST. GEORGE PROP.

TBM 565.72 (SEE PAGE 33.)

7.30 573.04

3.87 569.17

5.95 575.12

4.74 570.38

2" X 2" HVB P.I. OPP. STA. 20+00

3.22 573.60

11.95 561.65

TBM 561.65 (SEE PAGE 30.)
ANCHOR
SPK IN BRIDGE SIDE ROAD OPP. STA 16+70

0.40 562.05

12.21 549.84

0.28 550.12

12.66 537.96

0.60 538.00

12.56 525.52

0.63 526.15

13.01 513.14

0.24 513.39

513.38	
	13.20 500.18
198 502.16	
	6.88 495.28
2.08 497.36	
	3.64 493.72
0.21 493.93	
	12.10 481.83
0.91 482.74	
	12.53 470.21
0.86 471.07	
	12.54 458.53
1.18 459.71	
	12.51 447.20
1.08 448.28	
	8.68 439.60
0.97 440.57	
	12.52 428.05
0.61 428.66	

EL PASO REAL
E.H. 50. SIDE DRIVEN OPP. BURGNER RESIDENCE

E.H. E. SIDE MURKLANDS DR. OPP. F.F. BELL RESIDENCE

428.66		EL. 418.33
	10.48 418.18	BP LAMP POST MUIRLANDS DE END EXT. FEEDER LINE
1.00 419.18		
	12.01 407.17	
0.91 408.08		
	12.61 395.47	
0.29 395.76		
	12.58 383.18	
0.64 383.82		CITY BM. 372.61
	11.36 372.46	BP BASE LAMP POST EL CAMINO TEATRO & MUIRLANDS
12.03 384.99		
	0.12 384.37	
13.00 397.37		
	0.08 397.29	
12.02 409.31		
	0.18 409.13	
10.30 412.45		BM. 418.33
	1.26 412.19	BP LAMP POST MUIRLANDS DE END OF EXT. FEEDER LINE
12.27 429.06		

429.06	1.24 429.06	
12.60 440.62	1.00 439.62	T.B.M. 439.60 (SEE PAGE 55) E.H. E. SIDE MUIRLANDS DR. OPP. F.E. BELL RESIDENCE
11.29 450.86	0.77 450.09	
2.21 460.00	1.82 458.18	T.B.M. 458.21 (SEE PAGE 56) E.H. MUIRLANDS DR. & EL PASO REAL
10.07 468.25	0.96 467.19	
12.15 479.29	0.52 479.36	
12.65 492.01	2.42 489.52	
7.14 497.36	3.62 493.74	T.B.M. 493.72 (SEE PAGE 55) E.H. SW. SIDE EL PASO REAL OPP. BUDGENDER RESIDENCE
5.51 499.25	1.17 498.08	
12.56 510.69		

510.69

0.02 510.56

12.20 522.76

0.02 522.74

13.20 535.94

0.03 535.91

12.63 548.54

0.91 548.15

12.35 560.98

0.73 559.75

11.91 571.66

10.03 561.63

T.B.M. 561.63 (SEE PAGE 30.)

SPK IN P.P. ANCHOR 30. SIDE RD. OPP STA. 16470

11.60 573.23

2.86 570.37

T.B.M. 570.38 (SEE PAGE 59.)

3" X 2" HUB P.T. OPP STA. 20400

5.05 575.92

6.27 569.15

3.88 573.03

7.39 568.69

T.B.M. 565.72 (SEE PAGE 59.)

2" PIPE N.W. COR AT GEORGE ROAD

South Murrlands 12" Feeder Main

check on location of New House

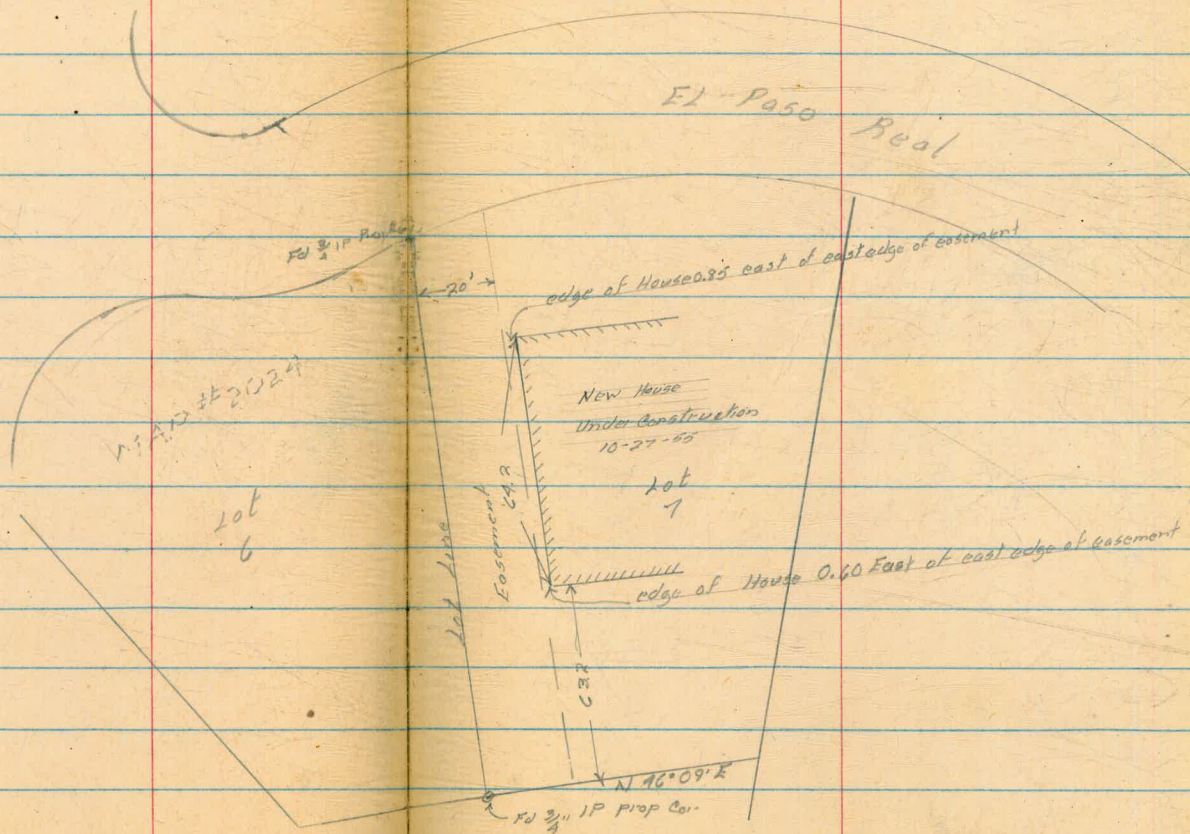
West
Williams

Varonfakis
KELLHOFFER

59

10-27-55

See DWG No 6160W



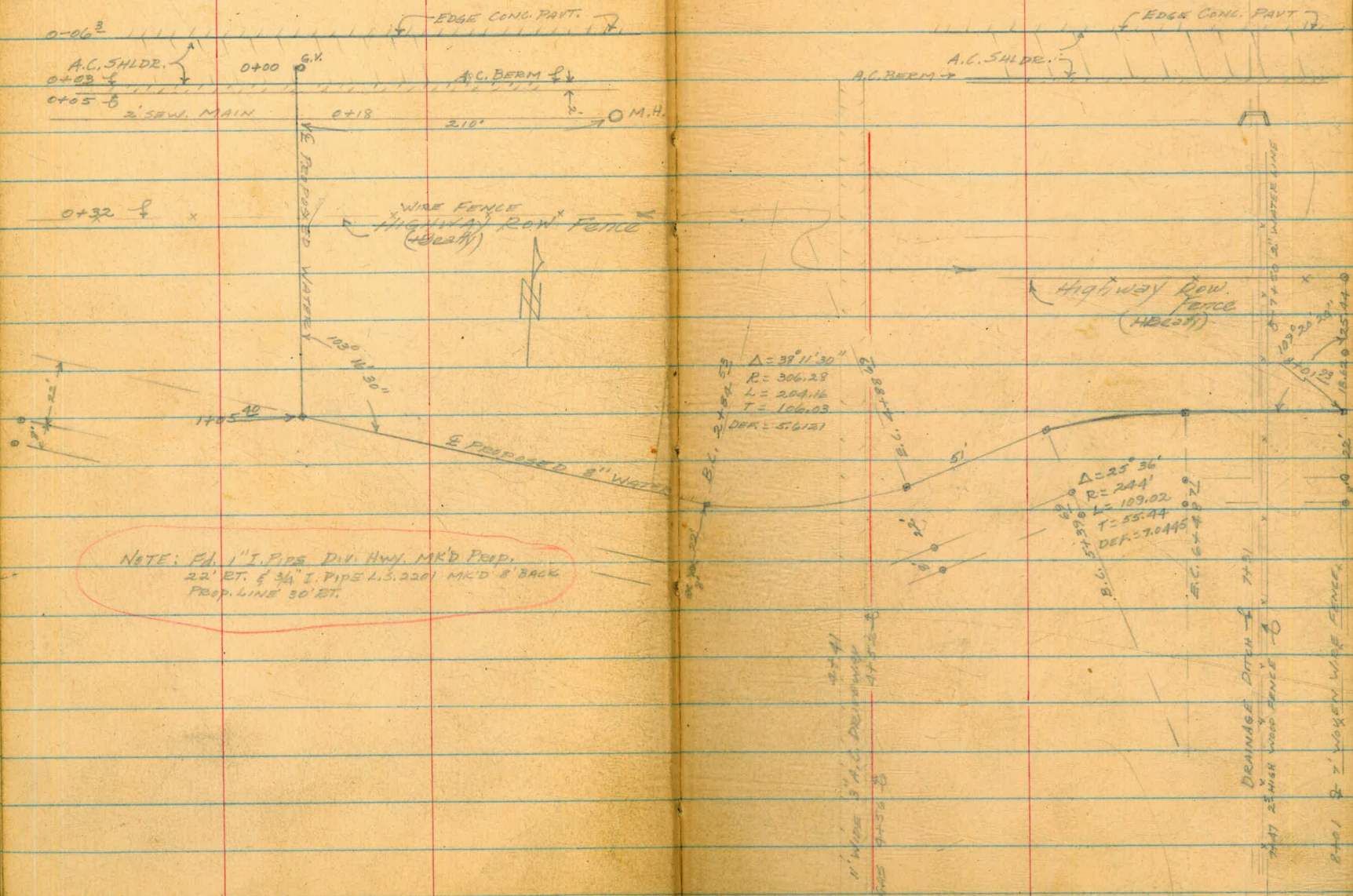
MAID #2024

FRONTAGE ROAD ALONG
CAMINO DEL RIO OPPOSITE
MISSION VALLEY COUNTRY CLUB
PROPOSED 8" WATER MAIN
ON FRONTAGE RD.

1-6-56
SHOREY
KEMP
MARTELL
SMITH

60

CAMINO DEL RIO
CULVERT



(CONT'D)

1/5/56
Beatty
Smith

61

BM	5.04	24.73 25.87	19.69 20.83
B.M	8.66	24.68	8.66 $\frac{16.07}{17.21} = 16.02$ See pp. 12
O-063		1.56	23.12
O+00		1.75	22.93
O+02		1.80	22.88
O+03		1.25	23.43
O+05		1.35	23.33
O+08		1.6	23.08
O+11		2.4	22.28
O+18		7.1	17.28
	SEW. M.H. SO. RIM	{ 5.06 14.4	{ 19.62 10.3
O+31		7.7	16.98
O+32		8.3	16.38
O+35		9.1	15.58
O+37		8.3	16.38
O+50		8.4	16.28
O+64		8.5	16.18
O+73		9.2	15.48
1+00		8.6	16.08
1+05 40 X PT.		8.4	16.28

chis x on s rim of Sew. MH City Engr. FB. 2146-13

on CONC ITION — FB 1670-61. Shows elev. 16.10

edge conc permit

on 30 shldr

on " "

on " berm

end " "

SEW. M.H. O+18 210' LT
#

s/s fence

RT (Sly)

8.4
c

1658
8.1
25

(Cont'd)

	24.68		7.4	17.28
1+50			7.3	17.38
1+53			7.9	16.78
1+56			7.4	17.28
1+59			7.2	17.48
2+00			6.4	18.28
2+50			5.9	18.78
2+84 ⁵³ B.C			5.18	24.38
TP			5.38	19.30
2+94			5.0	19.38
3+00			5.3	19.08
3+50			4.8	20.58
4+00			4.5	19.88
4+28			4.5	19.88
4+31			3.6	20.78
4+41 EDGE A.C. DRIVE			3.5	20.88
4+50 ON A.C.			3.8	20.58
TP	4.10	23.12	5.36	19.02
4+52 EDGE A.C. DRIVE			2.6	21.78

LT

RT

17.38

7.9
25

7.4
0

7.3
25

7.4
25

7.2
0

6.7
25

6.8
25

6.4
0

5.9
25

1" I.P. Prop. line 22' RT. BC 2+84.53
(Disc - Div. Highways)

19.78

5.7
25

5.3
0

4.6
25

5.5
25

4.8
0

4.2
25

5.3
25

4.5
0

3.8
25

21.38

4.3
25

3.8
0

3.6
25

1" I.P. PIPE 22' RT 4+88.69

(CONT'D)

23.12

LT

RT

63

4+54	2.9	20.22
4+55	3.7	19.42
4+28 ⁶⁹ E.C.	4.6	18.52
5+00	4.8	18.32
5+39 ⁶⁹ B.G.	5.3	17.82
5+50	5.4	17.72
6+00	5.3	17.82
6+48 ⁷¹ E.C.	5.3	17.82
6+50	5.3	17.82
7+00	4.4	18.72
7+27	3.5	19.62
7+31	2.8	20.32
7+38	4.5	18.62
7+41	4.5	18.62
7+43	2.8	20.32
7+47	2.4	20.72
7+50	3.1	20.02
7+54	4.6	18.52
7+70	4.7	18.22

4.9	4.6
2.5	C
5.2	4.8
2.5	C
5.7	5.3
2.5	C
5.7	5.4
2.5	C
6.0	5.3
2.5	C
5.3	5.3
2.5	C
5.3	5.3
2.5	C
4.4	4.4
2.5	C

19.02
4.1
2.5
18.72
4.4
2.5
18.02
5.1
2.5
18.02
5.1
2.5
18.32
4.8
2.5
18.12
4.9
2.5
18.22
4.9
2.5
18.62
4.5
2.5

4.1	3.1
2.5	C

19.62
3.5
2.5

(CONT'D)

LT

RT

64

23.12

7+76 TOP DIET SPWL 3.3 19.82

3.3

5.0

18.12

7+81 TOP DIET SPWL 5.0 18.12

17.92

7+83 TOP DIET SPWL 5.1 18.02

4.9

2.2

2.6

5.1

5.2

2.7

1.8

3

0

2.5

7+95 TOP DIET SPWL 3.3 19.82

8+00 TOP " " 4.5 18.62

5.1

5.0

2.7

4.5

3.3

5.5

5.4

2.5

1.1

5

0

6

1.3

2.5

17.72

8+01⁹³ END 4.1 19.02

5.1

5.0

4.1

3.3

5.5

5.4

2.5

1.0

0

6

1.3

2.5

17.72

SET B.M. 6.54 24.34 5.32 17.80

1" I. PIPE 22' RT. 8+01⁹³

TP 8.08 28.01 4.41 19.93 = 20.83

CHISEL ON M.H. # 24 according to 2240-D

CK. B.M. 8.39 19.62 = 19.69

CHISEL MK. ON M.H. (SEE PG. 61)

MISSION VALLEY INN SUBDIVISION

Proposed Water Main

West
Williams
Vairantakis
Kellhofer

3/19/56

7+79 1" Water Xing Top of Ground 65
7+78 4" Sewer Top of Ground 7+75"

3.01 Road

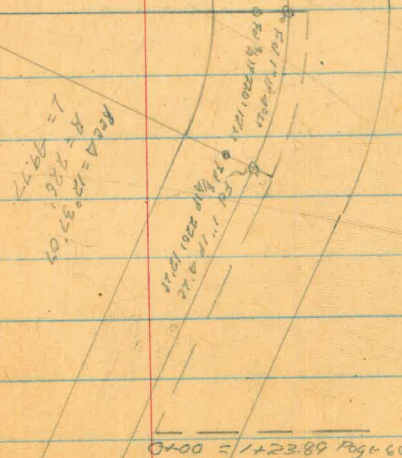
483' x
601
217
409

6+21 02 FOT RD 3/4 IP 4021

2+17.21 EC

1+67.44 BL
 $\Delta = 12^{\circ}37'07''$ Rad
 $R = 226.0'$
 $L = 49.77$ 7.40534

MAP 3347



0+00 = 1+23.89 Page 60 DWG 7100

0+00 = 1+23.89 Page 60

Profile Mission Valley

	6.47	22.49	16.02
0+00		5.3	17.19
+50		6.1	16.09
1+00		6.3	16.19
+50		6.2	16.29
+67 ⁴⁵ BO		5.0	17.49
+75		4.5	17.99
2+00		6.9	15.59
+17 ²¹ EC		6.9	15.59
+50		7.1	15.09
3+00		7.1	15.39
+50		7.0	15.49
4+00		7.6	14.89
+50 7.12	21.67	7.91	14.55
5+00		7.4	14.27
+50		7.0	14.67
+82		6.6	15.07
+87		5.2	16.47
6+00		5.2	16.47

Reduced by Palomares 3-20-56

TBM Men 38' east 0+38 page 61

Begin Work

Begin Loose Fill Area

End Loose Fill area

21.67

6+50 5.2 16.47

7+00 5.0 16.67

+41 3.58 18.09

+50 3.48 18.19

+57 3.53 18.14

+80 3.3 18.37

5.29 22.01 4.95 16.72

6.09 21.76 3.31 18.67

8.72 16.04 = 16.02

Begin 3" Oil road

End 3" Oil road

TP Top 3/4" 110 A' 11 Sta G+21⁰⁵

MISSION VALLEY INN SUBDIVISION
CAMINO DEL RIO ACCESS ROAD.

8" AC MAIN EXTENSION (4) STRS

	0.89	24.28	23.39	
0+03		6.8	17.5	12.4
0+40		6.1	18.2	12.0
		7.7	16.6	17.7
0+50		5.9	18.4	11.8
1+00		9.0	16.3	11.6
+50		8.4	15.9	11.5
+67 ¹¹ BC		8.8	15.5	11.4
1+75		8.5	15.8	11.4
2+00		8.9	15.4	11.4
+17 ¹² EC		8.9	15.4	11.3
+50		9.0	15.3	11.3
3+00		8.8	15.5	11.2
+42		9.8	14.5	11.1
	0.89	23.39	23.39	

Water Meter South
0+72

West
Williams
O'Brien
Henke

68

April 29 58
100' North 0+70

TBM Painted on end of Ch on R US 80

C4²

C6²

F12

(5) & FH

C6⁶

C4³

C4¹

C4¹

C4¹

C4²

C4¹

C4⁰

C4³

C3¹

Water Meter 3" To Mission

Valley Inn Set Meter flush

with ground

Please Return to
 City of San Diego Water Dept.
 Room 903 Civic Center

559.02

53.43

05

179 59 60

6.47

88 14 30

4.77

91 4 2 30

5.50

732 33 591.92
 18 72
 15 464.92

464.17 Tank Rim

17 + 75 458.0

573.03

7.34

565.69

18 + 10

566.69

464.17

565.72

458.00

1.17

720

565.69

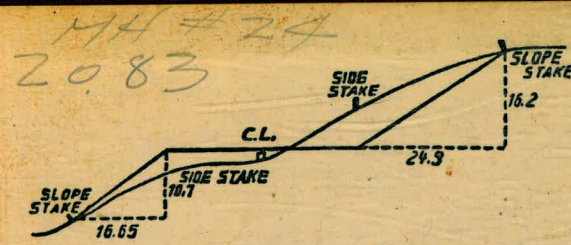
6.17

65.723

2.20

1

3.97



DISTANCES FROM SIDE STAKES FOR CROSS-SECTIONING.

SLOPE 1 1/2 TO 1. ROADWAY OF ANY WIDTH.

	0	.1	.2	.3	.4	.5	.6	.7	.8	.9	
0	0.00	0.15	0.30	0.45	0.60	0.75	0.90	1.05	1.20	1.35	0
1	1.50	1.65	1.80	1.95	2.10	2.25	2.40	2.55	2.70	2.85	1
2	3.00	3.15	3.30	3.45	3.60	3.75	3.90	4.05	4.20	4.35	2
3	4.50	4.65	4.80	4.95	5.10	5.25	5.40	5.55	5.70	5.85	3
4	6.00	6.15	6.30	6.45	6.60	6.75	6.90	7.05	7.20	7.35	4
5	7.50	7.65	7.80	7.95	8.10	8.25	8.40	8.55	8.70	8.85	5
6	9.00	9.15	9.30	9.45	9.60	9.75	9.90	10.05	10.20	10.35	6
7	10.50	10.65	10.80	10.95	11.10	11.25	11.40	11.55	11.70	11.85	7
8	12.00	12.15	12.30	12.45	12.60	12.75	12.90	13.05	13.20	13.35	8
9	13.50	13.65	13.80	13.95	14.10	14.25	14.40	14.55	14.70	14.85	9
10	15.00	15.15	15.30	15.45	15.60	15.75	15.90	16.05	16.20	16.35	10
11	16.50	16.65	16.80	16.95	17.10	17.25	17.40	17.55	17.70	17.85	11
12	18.00	18.15	18.30	18.45	18.60	18.75	18.90	19.05	19.20	19.35	12
13	19.50	19.65	19.80	19.95	20.10	20.25	20.40	20.55	20.70	20.85	13
14	21.00	21.15	21.30	21.45	21.60	21.75	21.90	22.05	22.20	22.35	14
15	22.50	22.65	22.80	22.95	23.10	23.25	23.40	23.55	23.70	23.85	15
16	24.00	24.15	24.30	24.45	24.60	24.75	24.90	25.05	25.20	25.35	16
17	25.50	25.65	25.80	25.95	26.10	26.25	26.40	26.55	26.70	26.85	17
18	27.00	27.15	27.30	27.45	27.60	27.75	27.90	28.05	28.20	28.35	18
19	28.50	28.65	28.80	28.95	29.10	29.25	29.40	29.55	29.70	29.85	19
20	30.00	30.15	30.30	30.45	30.60	30.75	30.90	31.05	31.20	31.35	20
21	31.50	31.65	31.80	31.95	32.10	32.25	32.40	32.55	32.70	32.85	21
22	33.00	33.15	33.30	33.45	33.60	33.75	33.90	34.05	34.20	34.35	22
23	34.50	34.65	34.80	34.95	35.10	35.25	35.40	35.55	35.70	35.85	23
24	36.00	36.15	36.30	36.45	36.60	36.75	36.90	37.05	37.20	37.35	24
25	37.50	37.65	37.80	37.95	38.10	38.25	38.40	38.55	38.70	38.85	25
26	39.00	39.15	39.30	39.45	39.60	39.75	39.90	40.05	40.20	40.35	26
27	40.50	40.65	40.80	40.95	41.10	41.25	41.40	41.55	41.70	41.85	27
28	42.00	42.15	42.30	42.45	42.60	42.75	42.90	43.05	43.20	43.35	28
29	43.50	43.65	43.80	43.95	44.10	44.25	44.40	44.55	44.70	44.85	29
30	45.00	45.15	45.30	45.45	45.60	45.75	45.90	46.05	46.20	46.35	30
31	46.50	46.65	46.80	46.95	47.10	47.25	47.40	47.55	47.70	47.85	31
32	48.00	48.15	48.30	48.45	48.60	48.75	48.90	49.05	49.20	49.35	32
33	49.50	49.65	49.80	49.95	50.10	50.25	50.40	50.55	50.70	50.85	33
34	51.00	51.15	51.30	51.45	51.60	51.75	51.90	52.05	52.20	52.35	34
35	52.50	52.65	52.80	52.95	53.10	53.25	53.40	53.55	53.70	53.85	35
36	54.00	54.15	54.30	54.45	54.60	54.75	54.90	55.05	55.20	55.35	36
37	55.50	55.65	55.80	55.95	56.10	56.25	56.40	56.55	56.70	56.85	37
38	57.00	57.15	57.30	57.45	57.60	57.75	57.90	58.05	58.20	58.35	38
39	58.50	58.65	58.80	58.95	59.10	59.25	59.40	59.55	59.70	59.85	39
40	60.00	60.15	60.30	60.45	60.60	60.75	60.90	61.05	61.20	61.35	40
41	61.50	61.65	61.80	61.95	62.10	62.25	62.40	62.55	62.70	62.85	41
42	63.00	63.15	63.30	63.45	63.60	63.75	63.90	64.05	64.20	64.35	42
43	64.50	64.65	64.80	64.95	65.10	65.25	65.40	65.55	65.70	65.85	43
44	66.00	66.15	66.30	66.45	66.60	66.75	66.90	67.05	67.20	67.35	44
45	67.50	67.65	67.80	67.95	68.10	68.25	68.40	68.55	68.70	68.85	45
46	69.00	69.15	69.30	69.45	69.60	69.75	69.90	70.05	70.20	70.35	46
47	70.50	70.65	70.80	70.95	71.10	71.25	71.40	71.55	71.70	71.85	47
48	72.00	72.15	72.30	72.45	72.60	72.75	72.90	73.05	73.20	73.35	48
49	73.50	73.65	73.80	73.95	74.10	74.25	74.40	74.55	74.70	74.85	49
50	75.00	75.15	75.30	75.45	75.60	75.75	75.90	76.05	76.20	76.35	50

THE NATIONAL BLANK BOOK COMPANY
 HOLYOKE MASSACHUSETTS
 NEW YORK CHICAGO BOSTON SAN FRANCISCO