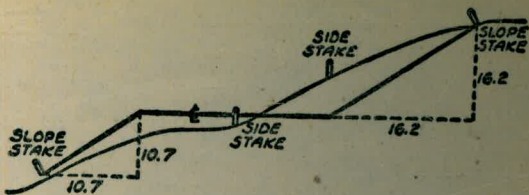


W924





DISTANCES FROM SIDE STAKES FOR CROSS-SECTIONING  
SLOPE 1 TO 1. ROADWAY OF ANY WIDTH

	0	.1	.2	.3	.4	.5	.6	.7	.8	.9
0	0.00	0.10	0.20	0.30	0.40	0.50	0.60	0.70	0.80	0.90
1	1.00	1.10	1.20	1.30	1.40	1.50	1.60	1.70	1.80	1.90
2	2.00	2.10	2.20	2.30	2.40	2.50	2.60	2.70	2.80	2.90
3	3.00	3.10	3.20	3.30	3.40	3.50	3.60	3.70	3.80	3.90
4	4.00	4.10	4.20	4.30	4.40	4.50	4.60	4.70	4.80	4.90
5	5.00	5.10	5.20	5.30	5.40	5.50	5.60	5.70	5.80	5.90
6	6.00	6.10	6.20	6.30	6.40	6.50	6.60	6.70	6.80	6.90
7	7.00	7.10	7.20	7.30	7.40	7.50	7.60	7.70	7.80	7.90
8	8.00	8.10	8.20	8.30	8.40	8.50	8.60	8.70	8.80	8.90
9	9.00	9.10	9.20	9.30	9.40	9.50	9.60	9.70	9.80	9.90
10	10.00	10.10	10.20	10.30	10.40	10.50	10.60	10.70	10.80	10.90
11	11.00	11.10	11.20	11.30	11.40	11.50	11.60	11.70	11.80	11.90
12	12.00	12.10	12.20	12.30	12.40	12.50	12.60	12.70	12.80	12.90
13	13.00	13.10	13.20	13.30	13.40	13.50	13.60	13.70	13.80	13.90
14	14.00	14.10	14.20	14.30	14.40	14.50	14.60	14.70	14.80	14.90
15	15.00	15.10	15.20	15.30	15.40	15.50	15.60	15.70	15.80	15.90
16	16.00	16.10	16.20	16.30	16.40	16.50	16.60	16.70	16.80	16.90
17	17.00	17.10	17.20	17.30	17.40	17.50	17.60	17.70	17.80	17.90
18	18.00	18.10	18.20	18.30	18.40	18.50	18.60	18.70	18.80	18.90
19	19.00	19.10	19.20	19.30	19.40	19.50	19.60	19.70	19.80	19.90
20	20.00	20.10	20.20	20.30	20.40	20.50	20.60	20.70	20.80	20.90
21	21.00	21.10	21.20	21.30	21.40	21.50	21.60	21.70	21.80	21.90
22	22.00	22.10	22.20	22.30	22.40	22.50	22.60	22.70	22.80	22.90
23	23.00	23.10	23.20	23.30	23.40	23.50	23.60	23.70	23.80	23.90
24	24.00	24.10	24.20	24.30	24.40	24.50	24.60	24.70	24.80	24.90
25	25.00	25.10	25.20	25.30	25.40	25.50	25.60	25.70	25.80	25.90
26	26.00	26.10	26.20	26.30	26.40	26.50	26.60	26.70	26.80	26.90
27	27.00	27.10	27.20	27.30	27.40	27.50	27.60	27.70	27.80	27.90
28	28.00	28.10	28.20	28.30	28.40	28.50	28.60	28.70	28.80	28.90
29	29.00	29.10	29.20	29.30	29.40	29.50	29.60	29.70	29.80	29.90
30	30.00	30.10	30.20	30.30	30.40	30.50	30.60	30.70	30.80	30.90
31	31.00	31.10	31.20	31.30	31.40	31.50	31.60	31.70	31.80	31.90
32	32.00	32.10	32.20	32.30	32.40	32.50	32.60	32.70	32.80	32.90
33	33.00	33.10	33.20	33.30	33.40	33.50	33.60	33.70	33.80	33.90
34	34.00	34.10	34.20	34.30	34.40	34.50	34.60	34.70	34.80	34.90
35	35.00	35.10	35.20	35.30	35.40	35.50	35.60	35.70	35.80	35.90
36	36.00	36.10	36.20	36.30	36.40	36.50	36.60	36.70	36.80	36.90
37	37.00	37.10	37.20	37.30	37.40	37.50	37.60	37.70	37.80	37.90
38	38.00	38.10	38.20	38.30	38.40	38.50	38.60	38.70	38.80	38.90
39	39.00	39.10	39.20	39.30	39.40	39.50	39.60	39.70	39.80	39.90
40	40.00	40.10	40.20	40.30	40.40	40.50	40.60	40.70	40.80	40.90
41	41.00	41.10	41.20	41.30	41.40	41.50	41.60	41.70	41.80	41.90
42	42.00	42.10	42.20	42.30	42.40	42.50	42.60	42.70	42.80	42.90
43	43.00	43.10	43.20	43.30	43.40	43.50	43.60	43.70	43.80	43.90
44	44.00	44.10	44.20	44.30	44.40	44.50	44.60	44.70	44.80	44.90
45	45.00	45.10	45.20	45.30	45.40	45.50	45.60	45.70	45.80	45.90
46	46.00	46.10	46.20	46.30	46.40	46.50	46.60	46.70	46.80	46.90
47	47.00	47.10	47.20	47.30	47.40	47.50	47.60	47.70	47.80	47.90
48	48.00	48.10	48.20	48.30	48.40	48.50	48.60	48.70	48.80	48.90
49	49.00	49.10	49.20	49.30	49.40	49.50	49.60	49.70	49.80	49.90
50	50.00	50.10	50.20	50.30	50.40	50.50	50.60	50.70	50.80	50.90

Distance of slope stake from side or shoulder stake for any width roadway, slope 1 to 1. If ground is nearly level, the cut or fill at side stake is located by the double entry method in left column and top row. The number in body of table in same row and column gives distance from side stake to slope stake. If ground is not level estimate the difference in elevation between the side stake and slope stake, lower target by this amount if cut, elevate if fill. Add this amount to cut or fill and find distance in table. Set up rod at this point, and line of sight should cut target. If it does not make the slight adjustment necessary.



TABLE XIII—CORRECTIONS FOR TANGENTS AND EXTERNALS

These corrections are to be added to the approximate values, found by dividing the tangent, or external, for a 1° curve (Table VIII) by the degree of curve, in order to obtain the true tangents, or externals. Intermediate values may be obtained by interpolation.

FOR TANGENTS ADD

Central Angle	DEGREE OF CURVE													
	5°	10°	15°	20°	25°	30°	35°	40°	45°	50°	55°	60°	65°	70°
10°	.03	.06	.09	.13	.16	.19	.22	.25	.28	.31	.34	.38	.42	.46
15°	.04	.10	.14	.19	.24	.29	.34	.39	.45	.51	.53	.58	.63	.68
20°	.06	.13	.19	.26	.32	.39	.45	.51	.58	.65	.72	.79	.84	.90
25°	.08	.16	.24	.33	.40	.49	.58	.67	.75	.83	.90	.99	1.06	1.14
30°	.10	.19	.29	.39	.49	.59	.69	.79	.89	.99	1.09	1.20	1.29	1.39
35°	.11	.22	.34	.47	.58	.69	.79	.81	.92	1.04	1.29	1.42	1.54	1.66
40°	.13	.26	.40	.53	.67	.80	.93	1.06	1.20	1.34	1.49	1.64	1.79	1.94
45°	.15	.30	.44	.60	.76	.91	1.06	1.21	1.37	1.52	1.70	1.87	2.04	2.21
50°	.17	.34	.51	.68	.85	1.02	1.19	1.36	1.54	1.72	1.91	2.10	2.29	2.48
55°	.19	.38	.57	.76	.95	1.14	1.32	1.52	1.72	1.92	2.14	2.35	2.56	2.77
60°	.21	.42	.63	.84	1.05	1.27	1.49	1.71	1.94	2.17	2.38	2.60	2.83	3.07
65°	.23	.46	.69	.93	1.16	1.40	1.64	1.88	2.13	2.38	2.63	2.88	3.13	3.39
70°	.25	.51	.76	1.02	1.28	1.54	1.80	2.06	2.33	2.60	2.88	3.16	3.44	3.72
75°	.27	.56	.83	1.12	1.40	1.69	1.98	2.27	2.57	2.87	3.16	3.47	3.78	4.09
80°	.30	.61	.91	1.22	1.53	1.84	2.15	2.46	2.78	3.10	3.44	3.78	4.12	4.46
85°	.33	.66	1.00	1.33	1.68	2.02	2.36	2.70	3.05	3.40	3.77	4.14	4.53	4.89
90°	.36	.72	1.09	1.45	1.83	2.20	2.57	2.94	3.32	3.70	4.10	4.50	4.91	5.32
95°	.39	.79	1.19	1.55	2.00	2.40	2.80	3.20	3.61	4.02	4.40	4.98	5.38	5.83
100°	.43	.86	1.30	1.74	2.18	2.62	3.06	3.50	3.95	4.40	4.88	5.37	5.85	6.34
110°	.51	1.03	1.56	2.08	2.61	3.14	3.67	4.21	4.76	5.31	5.86	6.43	7.01	7.60
120°	.62	1.25	1.93	2.52	3.16	3.81	4.45	5.11	5.77	6.44	7.12	7.80	8.50	9.22

FOR EXTERNALS ADD

Central Angle	DEGREE OF CURVE													
	5°	10°	15°	20°	25°	30°	35°	40°	45°	50°	55°	60°	65°	70°
10°	.001	.003	.004	.006	.007	.008	.009	.011	.012	.014	.015	.017	.018	.020
15°	.003	.007	.010	.014	.018	.023	.027	.032	.036	.041	.045	.050	.054	.059
20°	.006	.011	.017	.022	.028	.034	.038	.045	.051	.057	.063	.070	.076	.083
25°	.009	.018	.027	.036	.046	.056	.065	.074	.083	.093	.106	.120	.127	.135
30°	.013	.025	.038	.051	.065	.078	.090	.103	.116	.129	.149	.170	.179	.188
35°	.018	.035	.054	.072	.086	.109	.131	.153	.175	.197	.213	.230	.247	.264
40°	.023	.046	.070	.093	.117	.141	.172	.203	.234	.265	.277	.290	.315	.341
45°	.030	.060	.093	.119	.153	.184	.216	.254	.289	.325	.351	.378	.411	.445
50°	.037	.075	.116	.151	.189	.227	.266	.305	.345	.384	.425	.467	.508	.550
55°	.046	.093	.142	.188	.236	.283	.332	.381	.420	.479	.530	.582	.641	.700
60°	.056	.112	.168	.225	.283	.340	.398	.457	.516	.575	.636	.697	.774	.851
65°	.067	.135	.204	.273	.343	.412	.483	.554	.625	.697	.771	.845	.922	1.01
70°	.080	.159	.240	.321	.403	.485	.568	.652	.735	.819	.906	.994	1.08	1.17
75°	.095	.182	.266	.353	.440	.528	.617	.707	.797	.877	.971	1.07	1.18	1.29
80°	.110	.220	.332	.445	.558	.671	.787	.903	1.02	1.13	1.25	1.38	1.50	1.62
85°	.128	.259	.391	.524	.657	.790	.926	1.06	1.20	1.34	1.47	1.62	1.76	1.91
90°	.149	.299	.450	.603	.756	.910	1.07	1.22	1.38	1.54	1.70	1.87	2.03	2.20
95°	.174	.350	.522	.706	.885	1.06	1.25	1.43	1.62	1.80	1.99	2.18	2.38	2.58
100°	.200	.401	.604	.809	1.01	1.22	1.43	1.64	1.85	2.06	2.28	2.50	2.73	2.96
110°	.268	.536	.806	1.08	1.35	1.63	1.91	2.20	2.48	2.76	3.05	3.35	3.66	3.96
120°	.360	.721	1.08	1.45	1.82	2.19	2.57	2.95	3.33	3.72	4.11	4.50	4.91	5.32

21st St @ 3rd to 19th Preliminary 54-55 ✓  
Alice

INDEX

RUBY ST.; GOSHEN TO EUREKA - PRELIMINARY 1-2 ✓  
EUREKA ST.; LAURETTA TO RUBY - PRELIMINARY 3-5 ✓  
MILDRED ST.; EUREKA TO HUENEME - PRELIM. 6-9 ✓  
BUNKER HILL ST.; REVERE TO PAL. HWY. - PRELIM. 10-11 ✓  
GLENORA ST.; REVERE TO PAL. HWY. - PRELIM. 12-13 ✓  
MISSION BEACH - PRELIM. Alice  
ALLEY BLK'S 208 & 209 - BETWEEN SEAGIRT & SUNSET CT'S 14-16 ✓  
BETWEEN SUNSET & TANGIERS CT.  
ALLEY BLK'S 210, 211, 212 & 213 - MISSION BEACH - PRELIM. 17-20 ✓  
BETWEEN TANGIERS & TAYLOR  
ALLEY BLK'S 214, 215, 216 & 217 - MISSION BEACH - PRELIM. 21-24 ✓  
Alice  
TERALTA PL., HEERMOSA WAY 225' N.W. - PRELIMINARY 25-27 ✓  
FALCON ST., ARBOR DR. TO HUNTER ST. - PRELIMINARY 28-30 ✓  
Alice  
NORMAL HIGHT'S  
ALLEY BLK. 2 - E. of 34th N. of ARTHUR - METERS 31-32 ✓  
FOR LOWERING ✓  
52nd ST., POLK TO ORANGE @ STK'S DEMAIN - 33-34 ✓  
52nd ST., ELEV. ON EXIST. MAIN. → 35 ✓  
VOLTAIRE TO  
WEST PT. LOMA BLVD. - ABBOTT ST. PRELIM 36-38 ✓  
LANDIS TO Alice  
WATER METERS LEMONA AVE. - STERLING CT. 40 ✓  
8" A.C. MAIN  
JEWELL ST., MALDEN TO LOS ALTOS @ STK'S 41 ✓  
6" A.C. MAIN @ STK'S  
THORN ST., ALLEY BLK. 10 TO F.H.E. of MENLO 42 ✓  
LORING ST., COLLINGWOOD TO 350' WLY. & PEOPLE 43-45 ✓  
35 Preliminary PRELIM. Alice  
ALLEY BLK 28 N of Orange E of Wilson 47-49 ✓  
Check Depth of 6" AC pipe on Trojan  
151' South of @ 54th 50 ✓  
ALLEY BLK 28 N of Orange E of 40th St 51-53 ✓  
Preliminary Alice



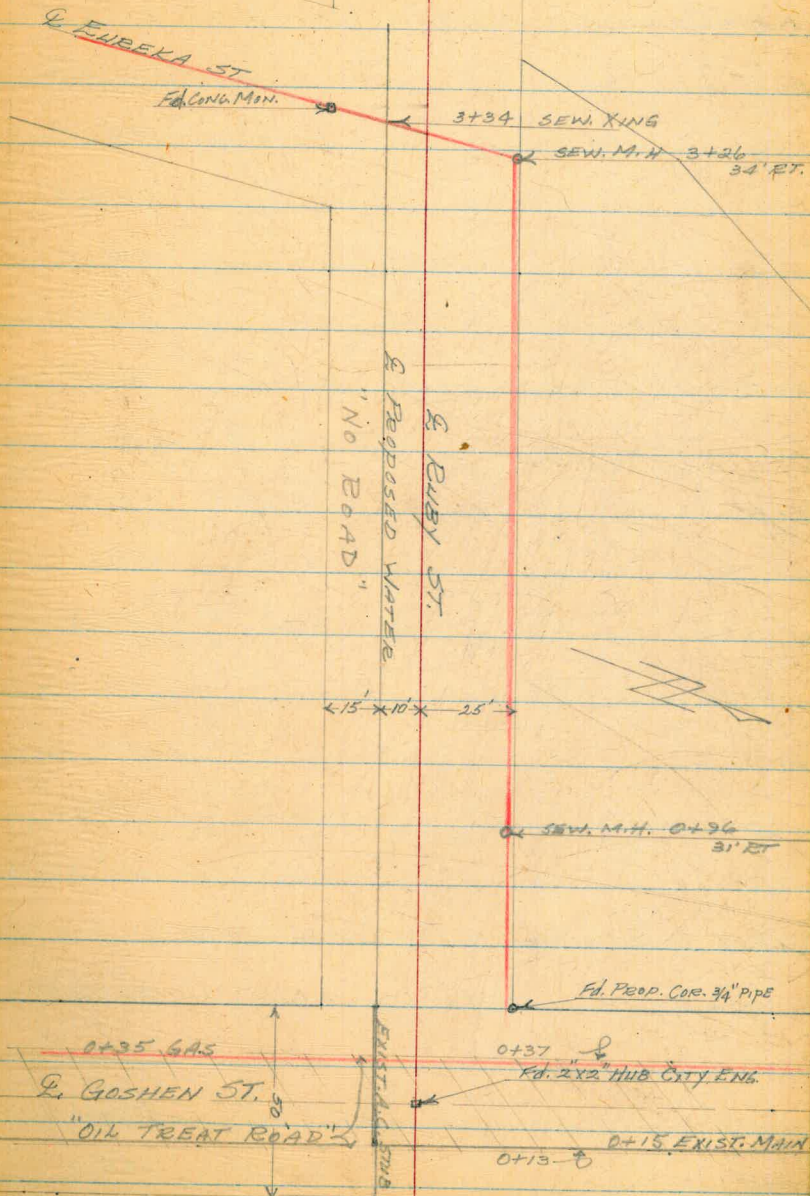
RUBY ST.  
GOSHEN ST. TO EUREKA ST.  
PRELIMINARY

3+61.31 = WLY. PROP. LINE EUREKA ST.

3+39.31 Fd. & CONC. MON. 15' LT.

0+00 = EAST PROP. LINE GOSHEN ST.

9/19/55  
SHORRY  
MARTEL  
16EMP  
HOLSTIAN



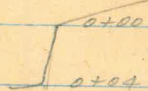


RUBY ST.  
(CONT'D)

BM	6.36	186.24		179.88
0+00			+16.4	202.64
0+04			1.6	184.64
0+13			5.2	181.04
0+25			5.2	181.04
0+37			5.6	180.64
0+50			4.7	181.54
0+65			4.5	181.74
	SEW. M.H. 0+96 31' BT.		9.83	
			17.64	
1+00			7.5	176.74
TP	0.14	173.45	12.93	173.31
1+50			5.1	168.35
2+00			13.0	160.45
TP	0.71	160.93	13.23	160.22
2+50			6.4	154.53
2+65			7.8	153.13
3+00			12.6	148.33
TP	2.13	150.00	13.06	147.87
3+16			3.8	146.2
TBM			5.78	144.02
			13.36	136.64
3+31			7.5	142.5
3+48			9.7	140.3
3+50			10.9	139.1
3+61 <sup>31</sup>	WLY LINE EUREKA ST.		13.1	136.9

Reduced by J. Gray  
9-26-55

PK. NAIL IN P.P. 2202	Approx. 20' NORTH RUBY ST.
Top of Slope	0+00
Toe of Slope	0+04
Edge oil	
G. GOUGHEN ST.	
LT	RT
Edge oil	
	5.0 10
	4.3 10
N. Edge SEW. M.H.	5.7 3.7 13 7
E. " " "	4.6 10
	12.0 10
	5.8 10
	12.4 10
E. RIM SEW. M.H. 3+26	34' BT.
E. SEW. " " "	" "
	2.8 2.8 10 5
	11.7 10





EUREKA ST.  
LAURETTA TO RUBY  
PRELIMINARY

6408<sup>69</sup> END

9/20/55  
SHOREY  
MARTEL  
KEMP  
HOLAHAN

3

E RUBY ST.

3401<sup>23</sup> FD. 2'x2" HUB E EUREKA & MILDRED

E MILDRED ST.

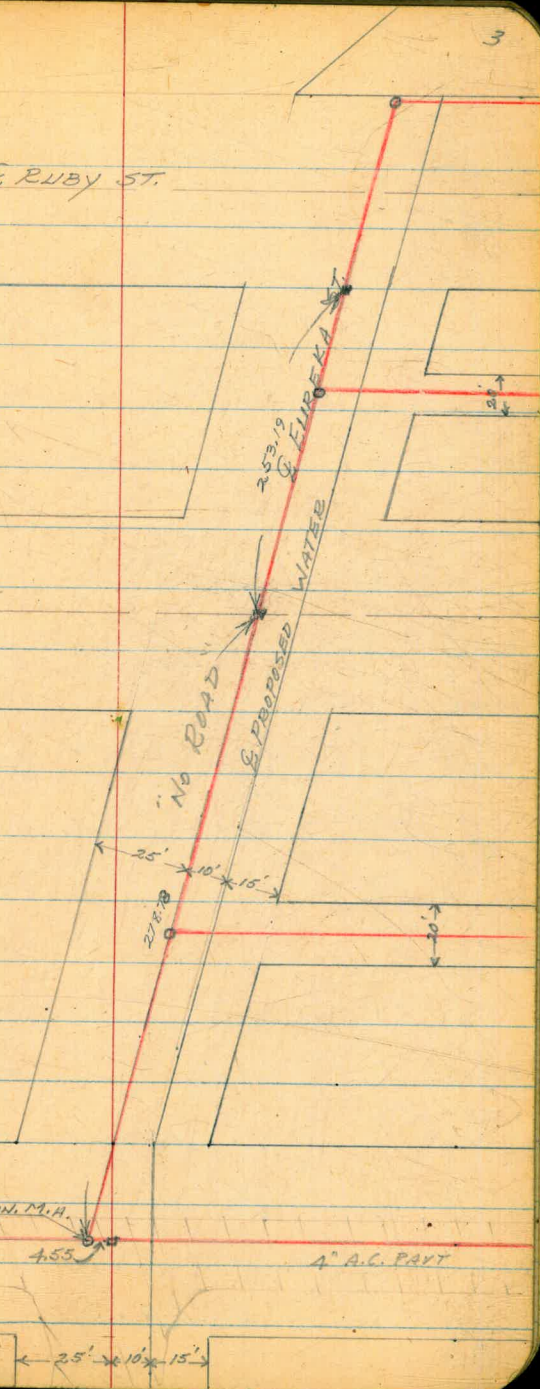
0+40<sup>39</sup> ΔPT. 14° 41' RT.

0+00 = So. PROP. LINE LAURETTA ST.

CHISEL MKD. 3/8" M.H.  
E LAURETTA ST.

4.55

4" A.C. PAVT





EUREKA ST.  
(CONT'D)

4

BM	3.14	114.56	111.42
0+00			9.6 104.76
0+2.5			7.1 107.46
			8.85 105.71
			13.65 100.91
0+36			7.1 107.46
0+37			6.2 108.36
0+40	<sup>39</sup> APT 14° 47' RT.		6.0 108.56
0+50			4.7 109.86
TP	12.85	126.25	1.16 113.40
1+00			10.7 115.55
1+50			5.8 120.45
			6.22 120.03
			12.67 113.58
1+62			4.8 121.45
2+00			1.8 124.45
TP	13.16	138.95	0.46 125.79
2+50			10.8 128.15
3+00			7.5 131.45
3+50			4.0 134.95
4+00			0.7 138.25
TP	10.02	148.65	0.32 138.63

Reduced by J. Gray  
9-26-55

PK. NAIL P.P. 559522-H APPROX. 15' RT. 0+42.

ON A.C. PAVT.

E. LAURETTA ST.

E. RIM SEW. M.H. 14<sup>5</sup> LT. 0+25

# " " " " " "

EDGE OIL

LT RT.

$\frac{2.1}{10}$   $\frac{2.3}{10}$

$\frac{5.7}{10}$   $\frac{3.8}{10}$

$\frac{11.9}{10}$   $\frac{9.8}{10}$

$\frac{7.5}{10}$   $\frac{4.6}{10}$

E. RIM SEW. M.H. 10 LT. 1+61

# " " " " " "

SEW. XING.

$\frac{3.7}{10}$   $\frac{0.2}{10}$

$\frac{13.0}{10}$   $\frac{9.6}{10}$

$\frac{9.7}{10}$   $\frac{6.0}{10}$

$\frac{5.7}{10}$   $\frac{2.6}{10}$

$\frac{2.7}{10}$   $\frac{+1.3}{10}$



EUREKA ST.  
(CONT'D)

5

148.65

TBM - SET

9.43 139.22

E. RIM SEW. M.H. 10' LT. 4+40

16.16

# " " " "

4+42

7.16

141.05

SEW. KING.

LT

RT

4+50

7.22

141.45

8.7

5.4

5+00

4.1

144.55

6.7 6.5 4.8

2.9

5+50

3.16

145.05

6.5 5.8 4.1

2.1

6+00

5.16

143.05

6.2

5.0

6+04

7.1

141.55

SEW. KING.

4.63

144.02

E. RIM SEW. M.H. 10' LT 6+04

12.01

136.64

# " " " "

6+08<sup>69</sup>

8.6

140.05

10.9

6.3

5.6

OK. TBM

4.63

144.02 = 144.02

SEE PAGE 2



MILDRED ST.  
EUREKA TO HUENEME  
PRELIMINARY

4+34<sup>50</sup> ΔPT 0° 04' 30" LT.

9/20/55

SHOREY  
MARTEL  
KEMP  
HOLLAND

Fd. 2" I. PIPE →

4+20 EXIST. A.C. MAIN

Q GOSHEN ST.

4+00 GAS XING

24'  
OIL TREAT

← 25' → 10' × 15' →

DIET ROAD

Q MILDRED ST.

Q PROPOSED WATER

75° 12'

Q EUREKA ST.

Fd. 2" × 2" HUB →

0+00 = WEST PROP. LINE EUREKA ST.

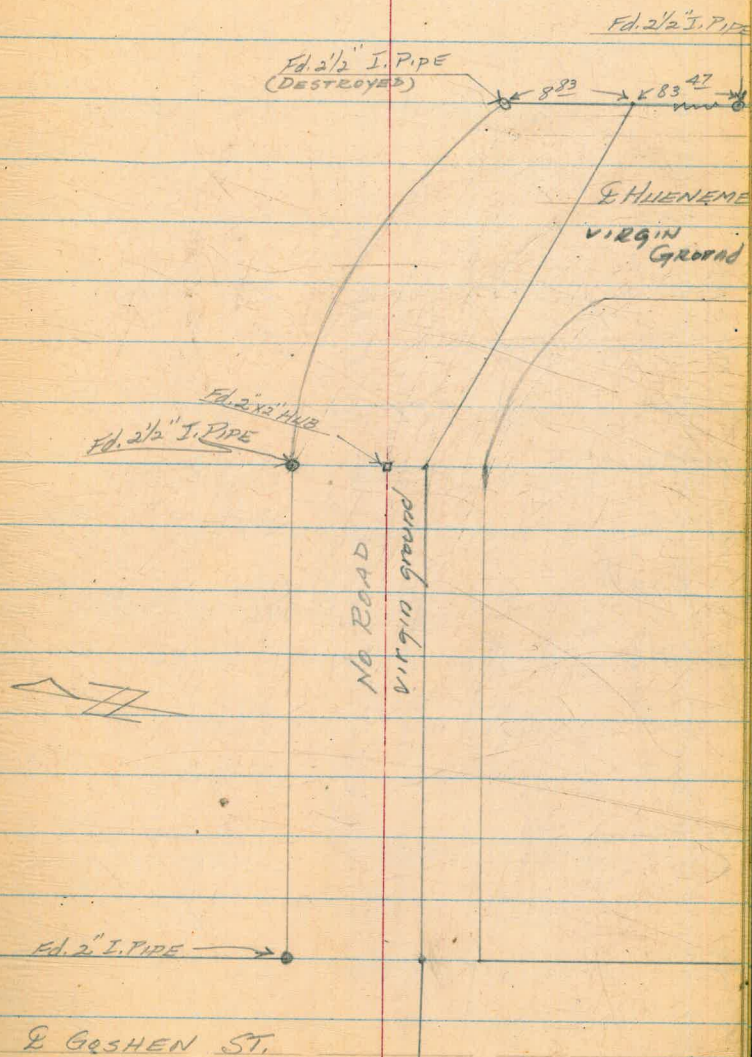


MILDRED ST.  
(CONT'D)

9+45<sup>97</sup> END

8+64<sup>50</sup> ΔPT. 30° 59' 10" RT.

4+34<sup>50</sup> ΔPT. 0° 24' 30" LT.





MILDRED ST.  
(CONT'D)

TBM	2.03	141.25		139.22
0+00			19.3	122.0
0+37			10.0	131.3
0+50			8.0	133.3
TP	12.93	154.07	0.11	141.14
1+00			11.7	142.7
1+50			6.3	147.8
2+00			1.7	152.2
TP	12.55	166.58	0.04	154.03
2+50			10.6	156.0
3+00			5.9	160.7
3+50			0.8	165.8
TP	12.95	179.28	0.25	166.33
4+00			10.5	168.8
4+07 <sup>5</sup>			9.8	169.5
OK. B.M.			4.15	175.13 = 175.10
4+34 <sup>50</sup> Δ PT.			8.3	171.0
4+37			7.8	171.5
4+50			7.3	172.0
5+00			4.0	175.3
TP	12.43	191.26	0.45	178.83
5+50			11.5	179.8
6+00			3.8	187.5
TP	12.81	203.77	0.30	190.96
6+50			6.0	197.8
6+71			0.9	202.9

Reduced by J. Gray 9.26.55

E. RIM SEW. M.H. 10' LT. 4+40 EUREKA ST.

LT	RT
18.6 10	20.0 10
9.2 10	10.5 10
7.3 10	8.5 10
11.0 10	12.1 10
5.8 10	6.6 10
1.3 10	1.8 10
10.6 10	12.8 10
5.0 10	5.9 10
0.2 10	1.5 10
10.0 10	11.1 10

G. GOSHEN ST.  
N.E. PROP. COR. PIPE GOSHEN & MILDRED

7.5 10	9.1 10
7.0 10	8.5 10
6.5 10	7.8 10
3.2 10	4.5 10
10.2 10	12.6 10
2.3 10	4.8 10
4.3 10	7.9 10
4.2 10	4.0 10



(CONT'D)

9

TP	12.46	203.77		
		216.16	0.07	203.70
7+00			9.6	306.6
7+50			1.1	315.1
TP	12.72	228.80	0.08	216.08
8+00			10.4	218.4
8+50			6.4	222.4
8+64 <sup>50</sup>	E. HUB 10' LT.		3.54	225.26
TBM	9.68	234.94		225.26
8+64 <sup>50</sup>	APT. 30°59'10" RT 11.2			223.7
9+00			10.2	229.7
9+45 <sup>97</sup>	END		8.2	226.7
TP	1.44	223.24	13.14	221.80
TP	2.21	212.45	13.00	210.24
TP	1.42	200.65	13.22	199.23
TP	0.67	188.21	13.11	187.54
OK. B.M.			13.07	175.14 = 175.10

LT

RT

	6.7			12.5
	10			10
	40.5			3.0
				10
	9.4			11.2
	10			10
	5.0			7.7
	10			10
SET TBM E. HUB				
	9.6			12.3
	10			10
	8.0			10.6
	10			10
	6.4			10.0
	10			10
N.E. COR. MILDRED & GOSHEN ST.				



BUNKER HILL  
 REVERE TO PACIFIC HWY  
 PRELIMINARY

3+85 APPROX. E. PAC. HWY

3+62 A.C. PAVT. PAC. HWY

3+52 A.C. SHLD. PACIFIC HWY

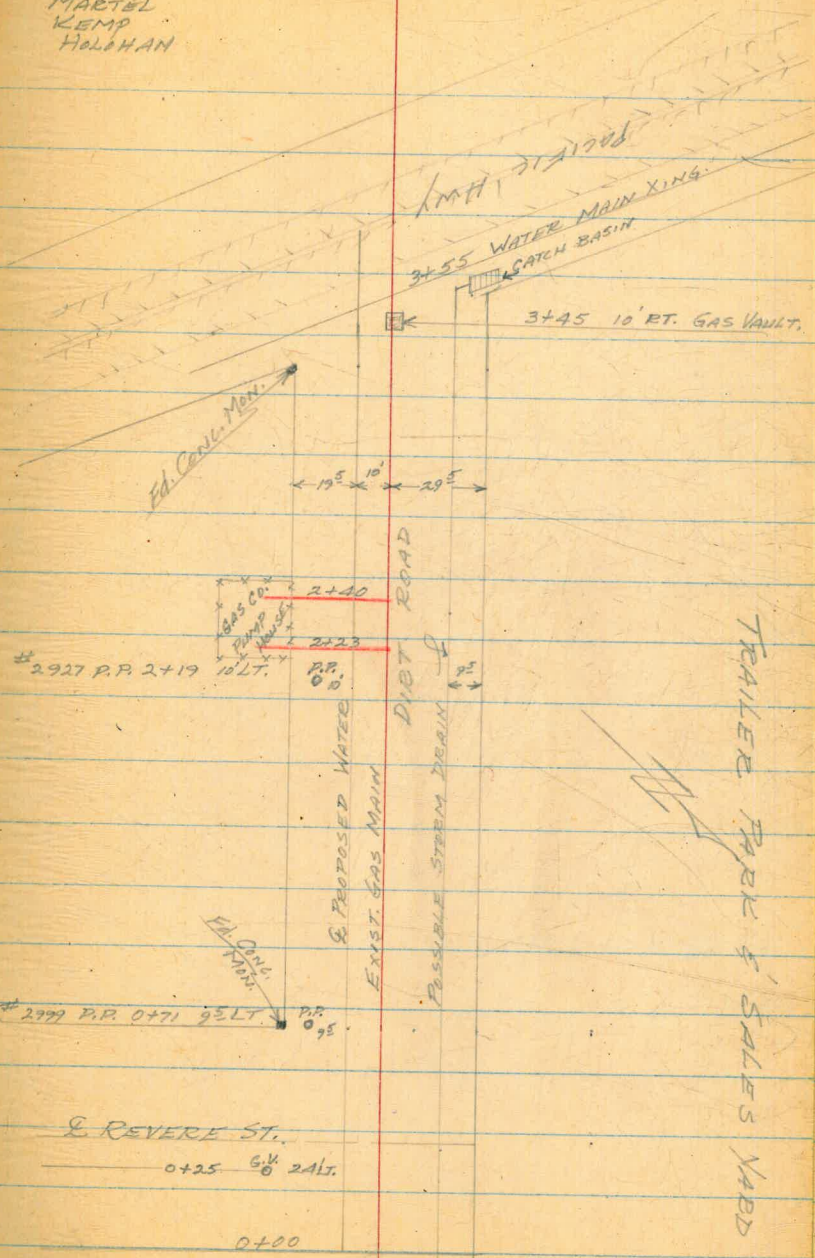
0+70

0+00 = NEARLY LINE REVERE ST

9/22/55

SHOREY  
 MARTEL  
 KEMP  
 HOLAHAN

10



TRAILER PARK & SALES YARD

0+00



BUNKER HILL ST.  
REVERE TO PACIFIC HWY  
PRELIMINARY

B.M	7.15	22.39		15.24
0+00			4.1	18.3
0+46			5.0	17.4
0+50			4.7	17.7
1+00			6.3	16.1
1+50			7.6	14.8
2+00			9.1	13.3
2+50			10.7	11.7
3+00			11.6	10.8
3+50			12.1	10.3
3+52			12.2	10.2
3+62			11.8	10.6
3+85			11.4	11.0
			11.87	10.52
SETTBM	3.10	19.34	6.15	16.24
CK. BM			4.10	15.24 = 15.24

9/22/55  
SHREY  
MARTEL  
KEMP  
HOLAHAN

11

PK. NAIL IN TEL. POLE NELY COR. REVERE & GLENDOVA  
LT RT

	5.2		5.0
	10		10
	5.0		5.0
	10		10
	6.8		6.5
	10		10
	7.8		8.3
	10		5
	8.4		9.4
	10		10
	11.0		10.7
	10		10
	11.6		11.6
	10		10

Edge A.C. Shid. PAC. HWY.

" " PART PAC. HWY.

Approx E PAC. HWY.

GAS & ELEC. Co. M.H. 3+45 14 RT.

CENC. MEN. SWLY COR. BUNKER HILL & REVERE



GLENDORA ST.  
REVERE TO PACIFIC HWY.  
PRELIMINARY

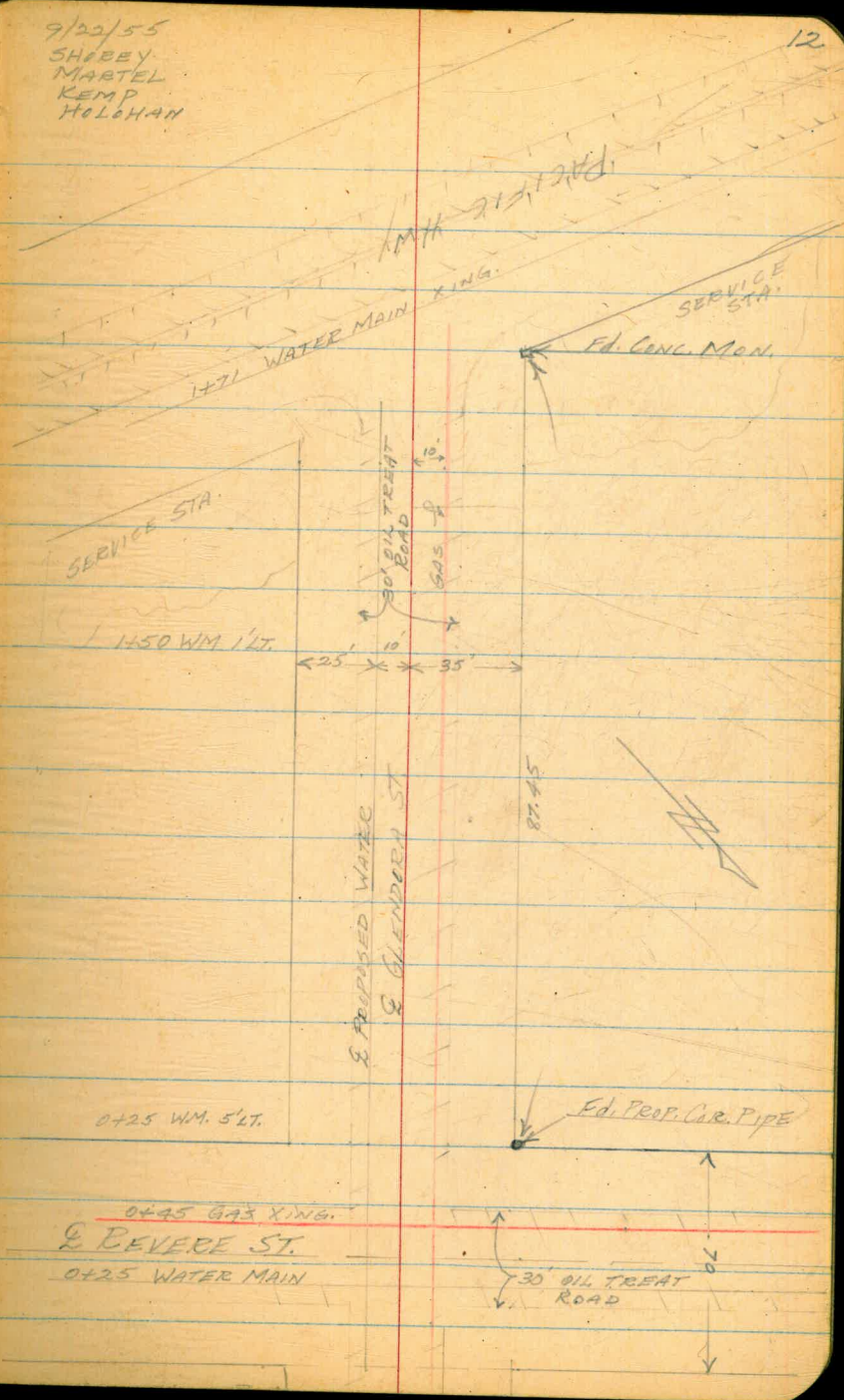
2+00 APPROX. & PAC. HWY

1+80 Edge A.C. Pav't PAC. HWY

1+67 Edge A.C. SHLD. PAC. HWY

9/22/55  
SHREY  
MARTEL  
KEMP  
HOLAHAN

12



0+00 = NELY LINE REVERE ST.



GLENDORA ST.

REVERE TO PACIFIC HWY  
PRELIMINARY

B.M.	155	16.79	15.24
0+00		3.1	13.7
0+50		4.9	11.9
1+00		6.3	10.5
1+50		7.4	9.4
1+67		7.7	9.1
1+80		7.4	9.4
2+00		7.2	9.6
TP	8.02	22.39	2.42 14.37
CK. TBM		6.15	16.24 = 16.24

9/22/55  
SHIREY  
MACTEL  
KEMP  
HALAHAN

13

PK. NAIL IN TEL. POLE 0+00 30' BT.

Edge A.C. Slid. on Pac. Hwy

PAVT

Approx. & Pac. Hwy

Cont. Mon. SWly Cor. REVERE & BUNKER HILL



ALLEY BLK 208 & 209  
 BETWEEN SEAGIRT CT. & SUNSET CT.  
 MISSION BEACH  
 PRELIMINARY  
 & PROFILE PROPOSED WATER

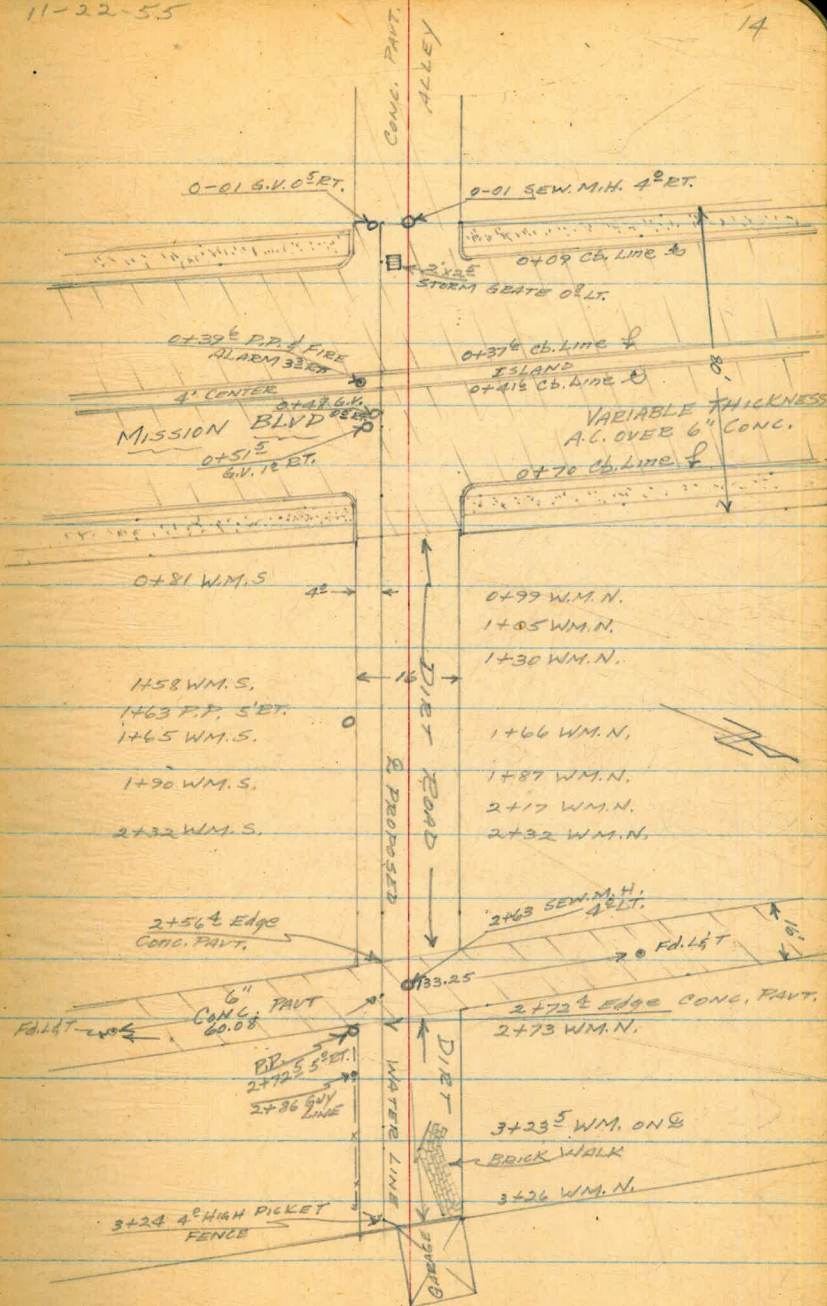
11-22-55

14

0+00 W/L MISSION BLVD.

0+80 = E/L MISSION BLVD.

3+26<sup>68</sup> END.





ALLEY BLK 13 208 & 209  
(CONT'D)

15

Redc'd  
by Rocky

B.M.	3.64	10.77	7.13	
TP	5.50	5.69	10.58	0.19
TBM	4.21	4.33	5.57	0.12
0+00			4.2	0.1
			4.2	
			5.9	
0+09 Cb. Line			4.8	-0.5
0+37 <sup>6</sup> GUTTER			4.3	0.0
0+37 <sup>6</sup> Top Cb.			3.6	0.7
0+41 <sup>6</sup> " "			3.8	0.5
0+41 <sup>6</sup> GUTTER			4.5	-0.2
0+50			4.6	-0.3
0+70 Cb. Line			5.0	-0.7
0+79 <sup>5</sup> Edge Conc.			5.2	-0.9
1+00			4.9	-0.6
1+50			4.9	-0.6
2+00			5.2	-0.9
2+50			5.7	-1.4
2+56 <sup>4</sup> Edge Conc.			5.7	-1.4
2+63			5.8	-1.5
			5.75	
			10.3	

SW BR. San Rafael Pl. & Mission Beach Seawall.

So. Edge Sew. M.H. 0+00

SEW. M.H. 0+00 4° LT

# " " " "

SEW. M.H. 2+63 4° LT

# " " " "



ALLEY BLK'S 208 & 209  
(CONT'D)

Rede'd  
by  
Rocky

16

4.33

2+72<sup>4</sup> Edge Conc. 5.7 -1.4

3+00 5.3 -1.0

3+26<sup>68</sup> END. 5.3 -1.0

TP 5.28 5.68 3.93 0.40

TP 10.86 11.04 5.50 0.18

CK. B.M. 3.92 7.12 = 7.13



ALLEY BLK'S. 210, 211, 212 & 213  
 BETWEEN SUNSET & TANGIERS OT'S  
 MISSION BEACH  
 PRELIMINARY  
 & PROFILE PROPOSED WATER

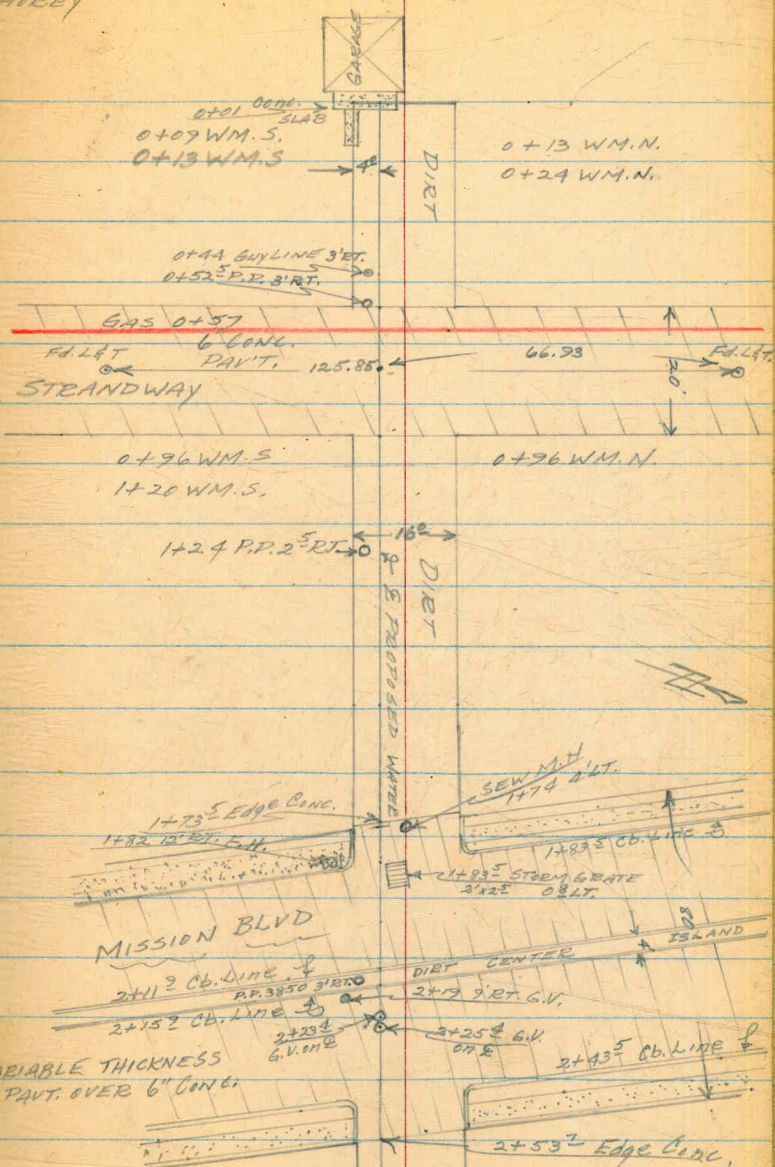
11-23-55  
 HOLDAN  
 SHIREY

17

0+00

0+53<sup>33</sup> W/L STRANDWAY

1+74<sup>47</sup> W/L MISSION BLVD.





(CONT'D)

18

MISSION BLVD

2+53<sup>2</sup> Edge Conc.  
2+77<sup>5</sup> WM.N.

3+00<sup>5</sup> P.P. 3<sup>5</sup> RT. → 0

3+31 WM.S.

3+28<sup>5</sup> WM.N.

3+55 P.P. 2<sup>5</sup> RT. → 0

3+57 WM.S.

3+68<sup>5</sup> WM.N.

3+89<sup>5</sup> WM.N.

4+07 WM.S.

4+09 WM.S.

x 40°

← 10°

4+28 Edge Conc.

6" CONC. PAVT

4+33<sup>2</sup> SEW. M.H.

4<sup>6</sup> LT.

4<sup>2</sup> Ed. Lt.

4+93<sup>5</sup> WM.S.

4+45 P.P. 4<sup>5</sup> RT.

4+48 WM.S.

4+77<sup>5</sup> WM.S.

4+92<sup>2</sup> 0<sup>2</sup> RT.

4+44 Edge Conc.

4+76 WM.N.

4+72

← 2' SIDEWALK

HOUSE

4+98<sup>28</sup> - END



(CONT'D)

TBM	5.09	5.21	0.12	
TP	7.21	10.43	1.99	3.22
0+00	ON DRIVE	SLAB	4.13	6.3
0+01	DIRT		4.2	6.2
0+50			4.3	6.1
0+53 <sup>33</sup>	Edge Conc.		4.28	6.15
0+63 <sup>33</sup>	1/2 STRAND WAY		4.54	5.89
0+73 <sup>33</sup>	Edge Conc.		4.37	6.06
1+00			5.6	4.8
1+50			8.4	2.0
1+73 <sup>5</sup>	Edge Conc.		10.20	0.2
1+74	So. RIM SEW. M.H.	4' LT.	10.30 12.40	0.1
TBM	4.64	4.77	10.30	0.13
1+83 <sup>5</sup>	Ob. Line		5.2	-0.4
			5.25	-0.5
			8.40	-3.2
2+00			4.8	0
2+11 <sup>2</sup>	GUTTER		4.7	+0.1
2+11 <sup>2</sup>	Top cb.		4.0	+0.7
2+15 <sup>2</sup>	" "		4.2	+0.6
2+15 <sup>2</sup>	GUTTER		4.9	-0.1

19

So. RIM SEW. M.H. (SEE PG. 15)

SEW. M.H. 1+74 4' LT.  
# " " "

So. RIM SEW. M.H. 1+74

1+83<sup>5</sup> TOP STORM DRAIN 0' LT.  
BOTTOM " " "



(CONT'D)

20

	4.77		
2+23 <sup>4</sup> Top G.V. Cap	4.9	-0.1	
2+25 <sup>4</sup> " " "	4.9	-0.1	
2+43 <sup>5</sup> Ch. Line	5.4	-0.6	
2+50	5.5	-0.7	
2+53 <sup>2</sup> Edge Conc.	5.5	-0.7	
3+00	4.9	-0.1	
3+50	5.3	-0.5	
4+00	5.9	-1.1	
4+28 Edge Conc.	5.90	-1.1	
4+30 <sup>2</sup> SUBD. SEW. M.H.	6.07 10.20	-1.3	
4+36 & ALLEY	6.02	-1.3	
4+44 Edge Conc.	5.83	-1.1	
4+50	5.7	-0.9	
4+87 <sup>2</sup> Edge Conc. WALK	4.77	0	
4+90 <sup>2</sup> " " "	4.75	0	
4+92 <sup>3</sup>	4.6	+0.2	
CK. TBM	4.65	0.12	= 0.12

4+33<sup>3</sup> 4<sup>1</sup>/<sub>2</sub> LT. SEW. M.H.  
E " " "



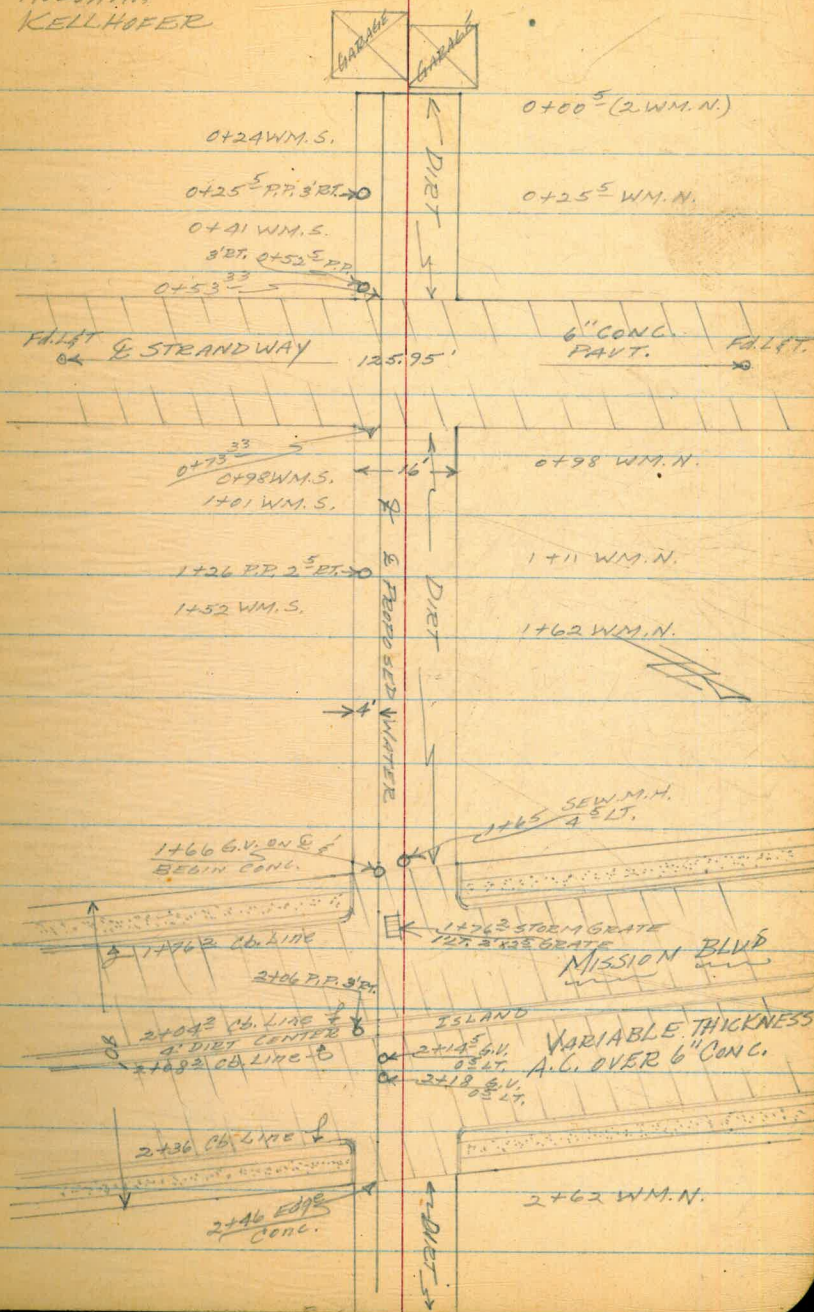
ALLEY BLK'S 214, 215, 216 & 217  
 BETWEEN TANGIERS & TONLON CT'S  
 MISSION BEACH  
 PRELIMINARY  
 & PROFILE

0+00

0+53 <sup>33</sup> W/L STRANDWAY

11-23-55  
 SHOREY  
 HOLAHAN  
 KELLHOFER

21

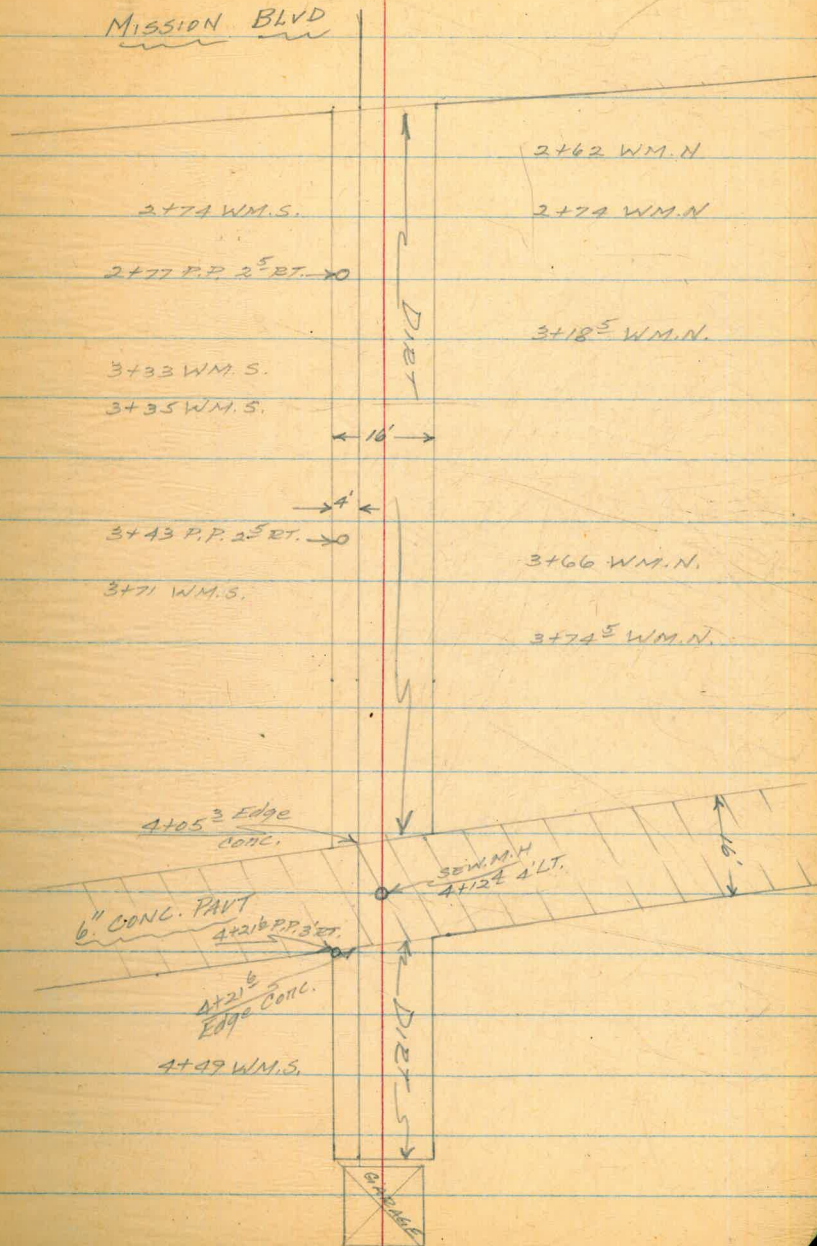




(CONT'D)

22

MISSION BLVD



4+75<sup>80</sup> END



(CONT'D)

23

TBM	5.17	5.29	0.12	
TP	7.48	7.67	3.02	2.21
0+00			4.3	5.4
0+50			3.8	5.9
0+53 <sup>33</sup> Edge CONC.			3.91	5.8
0+63 <sup>33</sup> & STRANDWAY			4.13	5.56
0+73 <sup>33</sup> Edge CONC.			3.99	5.7
1+00			5.6	4.1
1+50			8.7	1.0
			9.47	0.2
			11.87	
TBM	4.22	4.44	9.47	0.22
1+66 BEGIN CONC.			4.24	0.2
1+76 <sup>2</sup> CB LINE			4.90	-0.5
2+11 TOP STORM GRATE			4.99	-0.6
2+00			4.40	0.0
2+04 <sup>2</sup> GUTTER			4.35	+0.1
2+09 <sup>2</sup> Top Cb.			3.69	+0.75
2+08 <sup>2</sup> " "			3.88	+0.56
2+08 <sup>2</sup> GUTTER			4.52	-0.1
2+14 <sup>5</sup> Top G.V. Cap 1 <sup>5</sup> LT.			4.60	-0.2
2+8 Top " " 0 <sup>5</sup> LT.			4.64	-0.2

SEE PAGE 15 - So. Edge SEW. M. H.

1+65 SEW. M. H. 4<sup>5</sup> LT.  
# " " "So. RIM SEW. M. H. 1+65 4<sup>5</sup> LT.1+76<sup>2</sup> STORM GRATE 1<sup>0</sup> LT.



(CONT'D)

24

4.44

2+36 Cb. LINE 5.16 -0.72

2+46 Edge CONC. 5.33 -0.89

2+50 5.1 -0.7

3+00 5.1 -0.7

3+50 5.4 -1.0

4+00 5.7 -1.3

4+05<sup>3</sup> Edge CONC. 5.78 -1.4

SO. RIM SEW M.H. 5.97 -1.53

9.97 -5.6

4+13<sup>8</sup> & ALLEY 5.93 -1.49

4+21<sup>6</sup> Edge CONC. 5.76 -1.32

4+50 5.3 -0.9

4+75<sup>80</sup> END 5.9 -1.5

CK. TBM 4.32 0.12 = 0.13

SEW. M.H. 4+12<sup>4</sup> 4' LT.  
# " " "

SEE PAGE 19



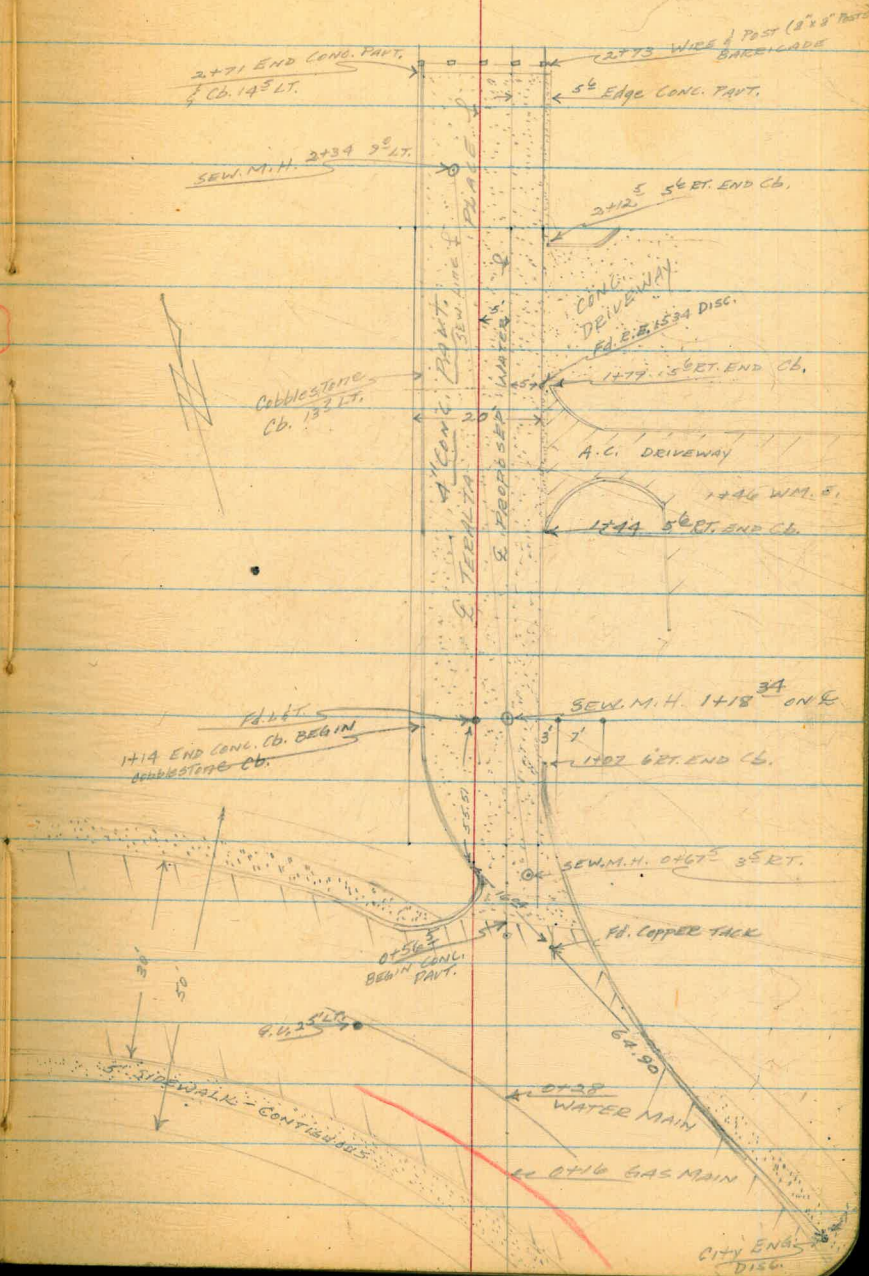
TERALTA PLACE  
 HERMOSA WAY 225' NLY  
 & PROFILE PROPOSED WATER LINE  
 PRELIMINARY

12-12-55  
 SHOREY  
 MARTELL  
 KEMP

25

2+75 END

NOTE: SEE FILE MAP # 1620 F  
 CITY ENG. T.P. BK. # 8



0+00 = Approx. 5/4 HERMOSA WAY



TERALTA PLACE  
(CONT'D)

26

BM.	4.07	270.08	266.01	
TP	5.44	263.74	11.78	258.30
SET TBM	5.09	262.64	6.19	257.55
0+00			2.4	260.24
0+05 <sup>S</sup>	Edge	SIDEWALK	2.5	260.1
0+10	TOP	CB	2.7	259.9
0+10	GUTTER		3.4	259.2
0+42	CB	LINE	4.2	258.4
0+50			4.1	258.5
0+56 <sup>S</sup>	Edge	CONC. PAVT.	4.0	258.6
		SEW. M.H. W.P.M.	{ 3.75 8.05	
1+00				
		SEW. M.H. W.P.M.	{ 9.49 13.2 17.3	253.15
TP	0.25	250.23	12.66	247.98
1+50			3.9	246.3
TP	6.03	237.32	12.74	237.29
2+10			3.0	234.3
		SEW. M.H. E.P.M.	{ 9.14 15.34	226.18
TP	1.08	227.26	11.14	226.18

N.E. R.P. VALLE VISTA & ALTAMIRA

N.W. COR. TERALTA PL. - NAIL IN CURB

SEW. M.H. 0+67<sup>S</sup> 3<sup>S</sup> RT.  
# " " "

{ SEW. M.H. 1+18<sup>3A</sup> ON E.  
# DEEP INLET TO M.H.  
# SEW. M.H.

SEW. M.H. 2+34 2<sup>0</sup> LT.  
# " " "

E.P.M. SEW. M.H.



	227.26			
2+47	SEWER KING	3.8		223.5
2+50		4.6		222.7
2+71	END OF CONC. PAVT.	8.7		218.6
2+75		2.4		217.9
TP	13.06	239.39	0.93	226.33
TP	13.12	252.37	0.14	239.25
TP	13.26	263.87	0.76	251.61
TP	6.88	265.14	3.61	258.26
TP	8.75	270.25	3.64	261.50
OK. B.M.		4.22	266.03	= 266.01



FALCON ST.

ARBOR DR. TO HUNTER ST.  
9" PEIRCE PREPARED WATER LINE  
PRELIMINARY

3+98<sup>73</sup> N/H HUNTER ST.

3+48<sup>73</sup> S/H HUNTER ST.

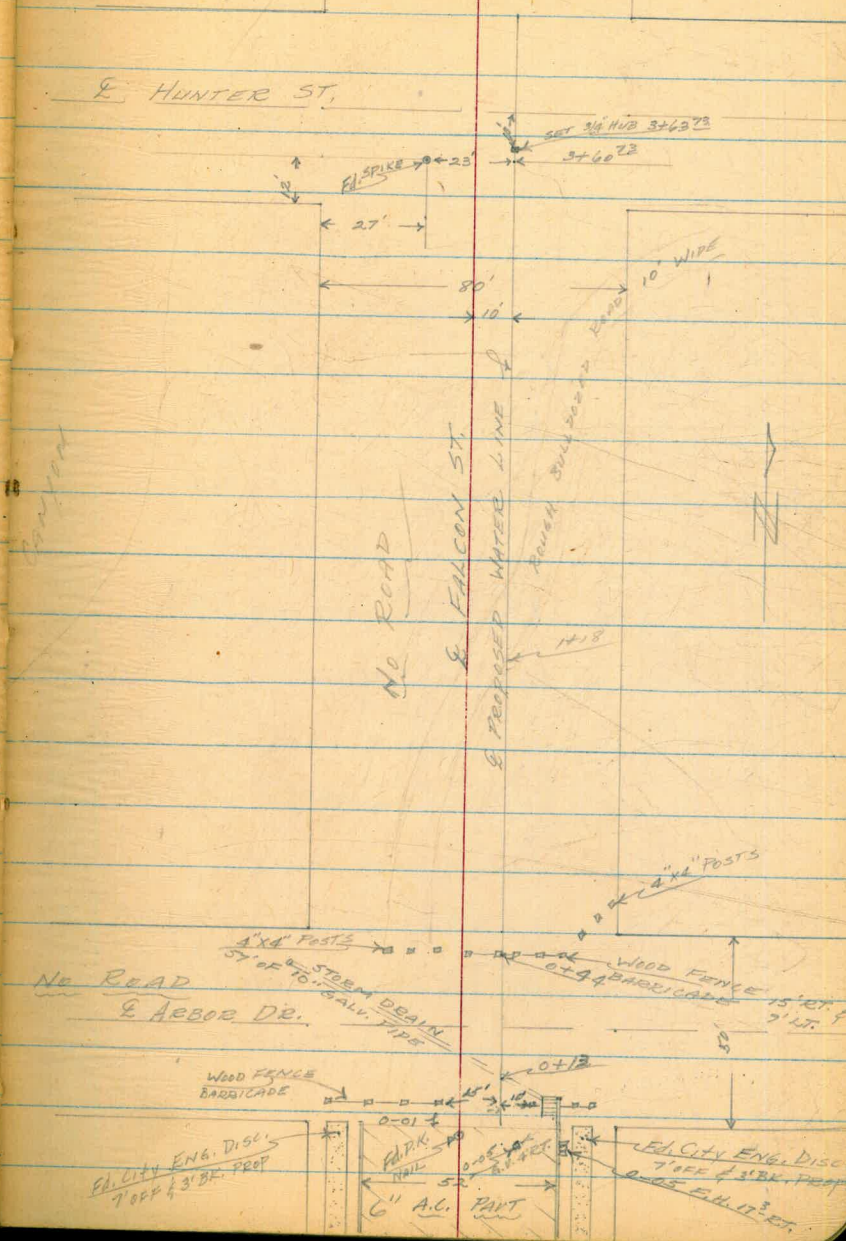
0+00 S/H ARBOR DR.

12-13-55

SHOBBY  
MASTELL  
KEMP

28

E HUNTER ST.





FALCON ST.  
(CONT'D)

TBM	370	246.91 <del>245.87</del>	263.13 <del>262.11</del>
0-01	END A.G. PAVT	5.0	261.9
0+00		5.0	261.9
		6.5	260.4
0+13	STORM DRAIN XING	9.4	257.5
0+31		4.5	262.4
0+50		3.7	263.2
		5.0	261.9
1+00	P.O.T.	10.5	256.9
1+13		13.0	253.9
TP	0.47	254.69 <del>253.69</del>	254.22 <del>253.22</del>
1+18		4.0	250.7
1+35		10.7	249.7
TP	0.27	241.77 <del>240.75</del>	241.50 <del>240.48</del>
1+50		11.0	240.8
1+85		8.1	233.7
2+00		12.0	229.8
TP	1.17	229.78 <del>227.76</del>	228.61 <del>227.59</del>
2+50	P.O.T.	8.3	221.5
TP	1.11	217.77 <del>216.77</del>	216.68 <del>215.66</del>
2+75		4.3	213.5

12-13-55  
SHOREY  
MARTELL  
KEMP

29

S.W. COR. FALCON & MONTICUTO WAY

R. STORM DRAIN 0+06 12" RT. 10" PIPE  
# " " 57' NWLY

		6.8 10	4.8 10
		14.4 15	14.4 11
		11.2 10	10.2 10
		14.7 10	16.7 4
		10 10	1.0 4
		+0.2 7	+2.5 10
		12.5 10	8.1 10
		19.0 10	8.9 5
		12.8 10	3.8 10
		8.3 10	0.0 10

Reduced by J. Gray  
12-14-55



FALCON ST.  
(CONT'D)

		217.79 <del>216.77</del>			
TP	3.20	208.53 <del>207.51</del>	12.46	205.33 <del>204.51</del>	
3+00			8.7	199.8	
TP	0.01	196.46 <del>195.44</del>	12.08	196.45 <del>195.43</del>	
TP	0.84	184.33 <del>183.31</del>	12.97	183.29 <del>182.47</del>	
3+50 P.O.T.			3.7	180.6	
3+63 <sup>73</sup> = 0+30		HUNTER ST.	9.9	174.7	
SET TBM	0.94	174.79 <del>173.77</del>	9.88	174.45 <del>173.43</del>	
3+98 <sup>73</sup> N/L		HUNTER ST.	19.2	166.1	
TP	12.43	186.88 <del>185.86</del>	0.34	174.45 <del>173.43</del>	
TP	12.41	198.63 <del>197.61</del>	0.66	186.22 <del>185.20</del>	
TP	11.93	210.13 <del>209.11</del>	0.43	198.20 <del>197.18</del>	
TP	12.67	222.02 <del>221.00</del>	0.80	209.33 <del>208.31</del>	
TP	12.47	234.13 <del>233.11</del>	0.36	221.66 <del>220.64</del>	
TP	12.73	246.21 <del>245.19</del>	0.65	233.48 <del>232.46</del>	
TP	13.17	258.32 <del>257.30</del>	0.66	246.15 <del>245.13</del>	
TP	8.95	267.10 <del>266.08</del>	0.17	258.15 <del>257.13</del>	
CK. TBM			3.94	263.16 <del>262.14</del> = 263.13 <del>262.11</del>	

12-13-55  
SHIBEY  
MARTELL  
KEMP

LT.

ET.

30

			10.8 <del>10</del>	67 <del>10</del>
			8.5 <del>10</del>	+1.3 <del>10</del>
			14.6 <del>10</del>	5.9 <del>10</del>
			24.3 <del>10</del>	12.0 <del>10</del>

3/4 HUB 3+63<sup>73</sup> = 0+30 HUNTER ST.



ALLEY BLK. 2  
 NORMAL HGT'S  
 E. OF 34<sup>th</sup>; NOR. OF ARTHUR

WATER METERS  
 0+00 = NIL ARTHUR

BM.	5.73	399.78	394.05
TP	5.64	401.77	3.65 396.13
0+23 W			5.1 396.7 396.1
0+25 E.			4.7 397.1 396.3
0+67 W.			4.5 397.3 396.5
0+89 E.			4.4 397.4 396.8
1+09 E.			4.3 397.5 396.9
1+45 W.			4.7 397.1 396.8
1+73 E.			4.8 397.0 397.0
1+93 W.			4.8 397.0 396.9
2+27 W.			4.6 397.2 397.0
2+32 E.			4.3 397.5 397.2
2+76 E.			3.8 398.0 397.3
2+95 W.			4.3 397.5 397.1
3+26 W.			4.6 397.2 396.8
3+39 E.			4.8 397.0 396.7
TP	3.24	399.72	5.29 396.48
3+75 E.			3.1 396.6 396.4
3+97 W.			3.6 396.1 396.0
4+16 W.			3.8 395.9 395.8
4+27 E.			3.7 396.0 395.8
4+77 E.			4.0 395.7 395.4

(CONT'D)

5/8/56  
 SHOREY  
 KEMP  
 SMITH

31

S.W.B.P. HAWLEY & NOR. MTN VIEW DR.

~~606~~ C1<sup>5</sup>

~~608~~ C1<sup>2</sup>

~~608~~ C1<sup>2</sup>

~~606~~ C1<sup>5</sup>

~~606~~ C1<sup>5</sup>

~~602~~ C1<sup>2</sup>

~~602~~ C0<sup>2</sup>

~~606~~ C1<sup>2</sup>

~~602~~ C1<sup>2</sup>

~~602~~ C1<sup>2</sup>

~~602~~ C0<sup>5</sup>

~~604~~ C0<sup>2</sup>

~~604~~ C1<sup>2</sup>

~~602~~ C1<sup>2</sup>

~~602~~ C1<sup>2</sup>

~~604~~ C0<sup>2</sup>

~~604~~ C1<sup>2</sup>

~~602~~ C1<sup>2</sup>

~~602~~ C1<sup>2</sup>

SET BACK OF METER BOX  
 0.25 FROM PROP.

RE-SET METERS - & VERT. RISER  
 1.85 FROM PROP. 5/21/56



ALLEY BLK. 2  
(CONT'D)  
WATER METERS

399.72

5+41 E.

4.3

395.4

395.0

~~60~~<sup>4</sup> C1<sup>1</sup>

5+52 E.

4.4

395.3

395.0

~~60~~<sup>3</sup> C1<sup>2</sup>

5+57 E.

4.4

395.3

394.9

~~60~~<sup>4</sup> C1<sup>3</sup>

CK. BM

5.69

394.03 = 394.05

5/8/56

SHOREY  
KEMP  
SMITH

32

SET BACK METER BOX  
0.25 FROM PROP.

RE-SET METERS - & VERT.  
RISER 1.85 FROM PROP.  
5/21/56



52<sup>ND</sup> ST.  
 PBLK TO ORANGE  
 (4) STK'S E GRD. FOR LOWERING  
 EXIST. MAIN

5/8/56  
 SHOREY  
 KEMP  
 SMITH

TBM	12.90	332.45	319.55	END OF EXIST. CB. ON E. SIDE
0+25			11.2 321.3 316.0	C5 <sup>3</sup>
0+50			9.5 323.0 317.7	C5 <sup>2</sup>
1+00			5.5 327.0 321.5	C5 <sup>5</sup>
1+50			1.2 331.3 326.0	C6 <sup>5</sup>
TP	12.56	344.88	0.13 332.32 325.3	
2+00			8.8 336.1 329.9	C6 <sup>3</sup> 6 <sup>2</sup>
2+50			4.9 340.0 334.0	C6 <sup>0</sup>
3+00			0.2 344.7 338.0	C6 <sup>7</sup>
TP	13.00	357.70	0.18 344.70 337.2	
3+50			8.0 349.7 342.1	C7 <sup>6</sup>
4+00			5.0 352.7 346.0	C6 <sup>2</sup>
4+25			3.6 354.1 345.7	C6 <sup>3</sup>
4+50			0.5 357.2 350.6	C6 <sup>6</sup>
TP	12.80	370.22	0.28 357.42 350.2	
5+00			6.2 364.0 358.6	C5 <sup>4</sup>
TP	11.87	382.03	0.06 370.16 358.2	
5+50			9.8 372.2 370.16	C4 <sup>8</sup>
6+00			4.1 377.9 367.4	C3 <sup>5</sup>
CK. BM.			4.49 377.52 = 377.51	
		WATER METERS		
		332.45		
0+84 W.			7.1 325.4 324.1	C1 <sup>2</sup>
		344.88		
2+41 W.			6.9 338.0 336.1	C1 <sup>2</sup>
2+70 W.			4.5 340.4 338.4	C2 <sup>0</sup>



52<sup>ND</sup> ST.  
(CONT'D)

5/8/56  
SHOREY  
KEMP  
SMITH

34

357.70

3424 W.

12.4 345.3 343.1

C<sub>2</sub><sup>2</sup>

3465 W.

9.5 348.2 345.9

C<sub>2</sub><sup>3</sup>

4404 W.

7.5 350.2 348.9

C<sub>1</sub><sup>3</sup>



ELEV. ON TOP. OF EXIST.  
MAIN. 52<sup>ND</sup> ST.  
POLK TO ORANGE

0+00 = N/L POLK

0+50	320.1
1+00	323.8
1+50	328.5
2+50	336.2
3+00	340.7
3+50	344.7
4+50	353.8
5+00	361.3
6+06	375.7

5/9/55  
SHOREY  
KEMP  
SMITH

35



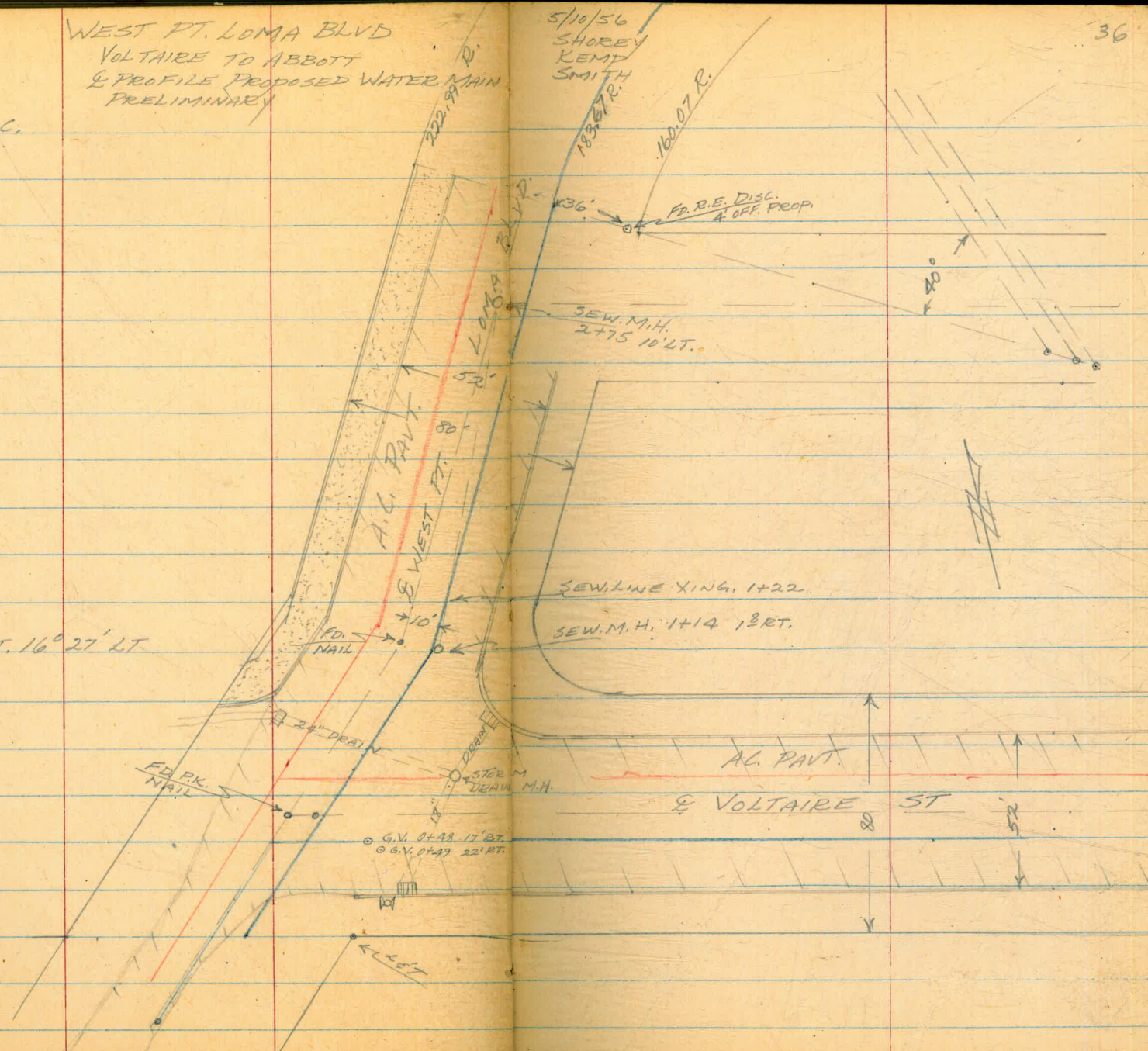
WEST PT. LOMA BLVD  
VOLTAIRE TO ABBOTT  
& PROFILE PROPOSED WATER MAIN  
PRELIMINARY

5/10/56  
SHOREY  
KEMP  
SMITH

3+16<sup>26</sup> B.C.

1+11<sup>26</sup> Δ PT. 16° 27' LT

0+00





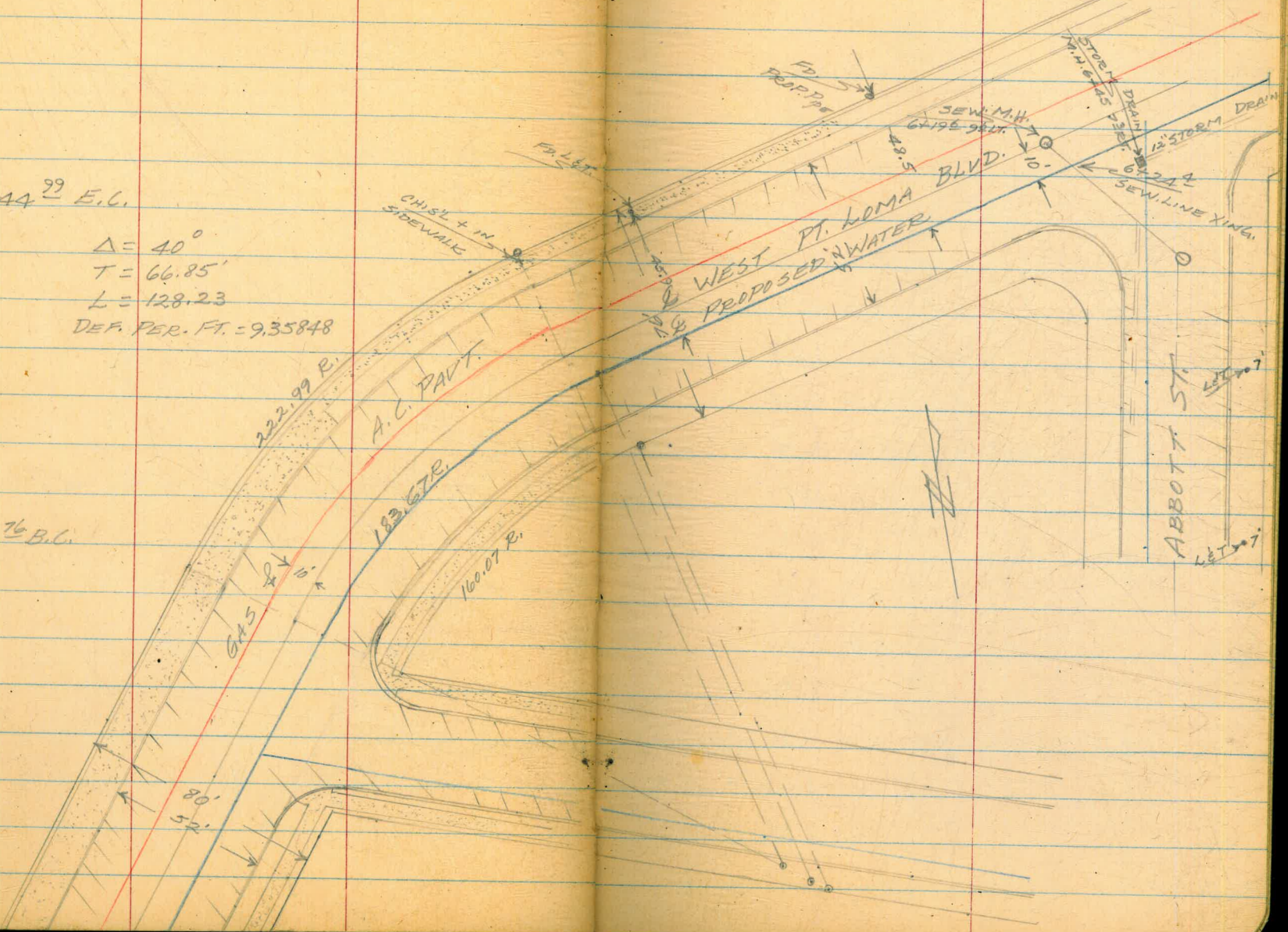
WEST PT. LOMA BLVD.  
(CONT'D)

7406<sup>48</sup> - END - INT. PROP. LINE ABBOTT ST.

4444<sup>99</sup> E.C.

$\Delta = 40^\circ$   
 $T = 66.85'$   
 $L = 128.23$   
 DEF. PER. FT. = 9.35848

3416<sup>76</sup> B.C.





WEST PT. LOMA BLVD.  
VOLTAIRE TO ABBOTT  
& PROFILE PROPOSED WATER MAIN  
PRELIMINARY.

BM	3.76	6.23	2.47
0+00		4.8	1.93
0+13	EDGE A.C. PAVT	4.9	1.33
		9.2	-3.03
0+50		4.8	1.43
		9.5	-3.3
		9.7	-3.5
		9.1	-2.9
1+00		4.7	1.53
1+11 <sup>96</sup>		4.8	1.43
	SO. RIM SEW. M.H.	4.90	1.33
		7.10	-87
1+22	SEW. LINE XING.	4.7	1.53
1+50		4.5	1.73
2+00		4.4	1.83
2+50		4.3	1.93
	SO. RIM SEW. M.H.	6.1	0.13
		7.9	-1.73
3+00		4.2	2.03
3+16 <sup>76</sup>	B.C.	4.1	2.13

5/10/56  
SHOREY  
KEMP  
SMITH

LT

RT

S.W.B.P. ABBOTT & VOLTAIRE

	4.9	
	2.2	Edge Oil
# STORM DRAIN 18"		0+47 34' RT.
# STORM DRAIN 24"		0+66 28' LT.
# STORM DRAIN M.H.		
# STORM DRAIN		1+00 23' RT.

SEW. M.H. 13 RT 1+19

# " " " "

SEW. M.H. 1.T. 2+75 10' LT.

# " " " "



WEST PT. LOMA BLVD.  
(CONT'D)

6.23

3+25			4.1	2.13
3+50			4.1	2.13
3+75			4.1	2.13
4+00 TP	5.01	7.14	4.10	2.13
4+25			4.9	2.24
4+44 <sup>99</sup> E.C.			4.9	2.24
4+50			4.9	2.24
5+00			4.8	2.34
5+50			4.7	2.44
6+00			4.7	2.44
SO. RIM. SEW. M.H.			4.48	2.66
			10.9	-3.76
6+24 <sup>A</sup> SEW. LINE XING.			4.6	2.54
			8.7	-1.56
6+50			4.6	2.54
7+00			4.8	2.34
7+06 <sup>487</sup>			4.8	2.34
TP	5.08	6.98	5.24	1.90
CK. B.M.			4.48	2.50 = 2.47

5/10/56  
SHOREY  
KEMP  
SMITH

39

SEW. M.H. 6+19<sup>6</sup> 7<sup>6</sup> LT

# " " " "

# STORM DRAIN M.H. 6+45<sup>2</sup> 7<sup>3</sup> RT

(6.54)



WATER METERS LEMONA AVE.  
LANDIS TO STERLING CT.

6/29/56

40

SHOCEY  
KEMP  
VARONAKIS  
SMITH

PK. NAIL IN POLE P1575 STERLING CT.

BM 1020 314.21 304.01

0-18 E. 10.6 303.6 298.3 C5<sup>3</sup>

0+13 E. 10.7 303.5 300.3 C3<sup>3</sup>

1+79 E. 3.1 311.1 310.8 C0<sup>3</sup>

1+79 W. TP 12.19 325.11 3.5 310.7 310.3 C0<sup>4</sup>

2+45 E. 1.29 312.92 315.7 F0<sup>6</sup>

10.0 315.1

"3679"

"3689"

3+70 S ELY 1.5 323.6 323.4 C0<sup>2</sup>

3+72 (S) F.H. 0.3 324.8 324.6 C0<sup>2</sup>

TP 6.15 329.77 1.49 323.62

OK. HUB 3.10 326.67 =

E.C. HUB MK'D C0<sup>5</sup>



JEWELL ST.  
MALDEN TO LOS ALTOS  
③ STK'S & GRD. 8" A.C. MAIN

TBM	13.15	222.95	209.80
TP			0.62 222.33
TP	12.23	234.56	0.42 234.14
TP	12.10	246.24	

0+50 BEGIN WORK City To Conn.  
To EXIST. 8" 11.5 226.1

1+00 3.8 242.4 235.7 C 7 2

1+25 0.4 245.8 239.6 C 6 2  
12.64 258.53 0.35 245.89

1+50 9.9 248.6 243.4 C 5 2

1+87 5.4 253.1 249.0 C 4 1

2+00 3.4 255.1 251.3 C 3 2  
11.77 269.56 0.74 269.79

2+37 7.9 261.7 258.6 C 3 1

2+52 8" G.V. 5.0 264.6 260.8 C 3 2

2+57 11/4 BEND & WORK. END OF WORK. 4.5 265.1 261.2 C 3 2

CK. TBM 1.47 268.09 = 268.08

WATER METERS  
246.24

1+10E. 2.4 243.8 239.8 C 2 0  
258.53

1+49W. 8.7 249.8 246.8 C 3 0

1+87E. 5.7

This is not to be put in  
Beatty  
7/18/56

7/9/56

SHOREY  
KEMP  
VARONIAKIS

41

2" PROP. PIPE NW COR. JEWELL & COLLINGWOOD

C TO EXIST. 8" MAIN

BOTTOM FLAGSTONE STEPS F.B. 870

1706 MAULDEN



THORN ST.  
ALLEY BLK. 10 TO F.H. E. OF MENLO  
④ STK'S & GRD 6" A.C. MAIN

BM	5.74	305.33	299.59
3+44 <sup>+</sup>		6" X 6" CROSS	298.5
3+50	1.8	303.5	298.2
4+00	5.2	300.1	295.7
4+50	7.4	297.9	<del>294.3</del> 294.7
4+75	7.9	297.4	<del>293.5</del> 294.2
5+00	7.7	297.6	<del>294.2</del> 294.7
5+37.5	5.8	299.5	295.4
5+50			295.8

WATER METER

0+00 = E/L ALLEY BLK. 11

305.33

0+41.5	12.1	293.2	290.0	C3 <sup>2</sup>
--------	------	-------	-------	-----------------

7/10/56

SHOZEY  
KEMP  
VARDONAKIS  
SMITH.

NAIL IN P.P. 99009 S.E. COR. MENLO & THORN

42







LOBING ST.  
(CONT'D)

TBM	0.89	260.76	259.87
TP	0.20	248.91	12.05 248.71
TBM	5.04	246.92	7.03 241.88
0+00 = E/L COLLINGSWOOD		5.5	
0+50		6.7	
0+73		6.4	
0+82		7.6	
1+00		7.3	
1+20		6.3	
1+50		5.7	
TP	5.75	248.17	4.50 242.42
1+79 <sup>94</sup> B.C.		6.3	
2+00		5.7	
2+25		6.1	
2+50		6.2	
2+75		7.0	

7/10/56  
SHOREY  
KEMP  
VARONAKIS  
SMITH

LT

RT

44

F.B. 921-71

(10' LT. STA. 23+20<sup>19</sup> LOS ALTOS RD.)

2x2 HUB 25' RT. 0+00

4.9  
15

4.3  
35

6.9  
15

5.7  
35

7.7 11.9  
15 5

6.5 6.0 7.0 6.2  
4 6 9 35

11.1 14.4  
15 9

6.0  
35

11.8  
15

5.8 6.7 5.5 2.7 1.7  
3 4 27 30 35

NAIL IN P.P. 1613 2+15 4' LT.

15.0 6.5  
15 4

7.4 6.3 3.0  
2 26 33

14.7 5.8  
15 2

7.2 5.9 2.4  
2 27 34

14.2 5.8  
16 6

6.5 5.1 1.8 4.3  
7 28 32 35

16.1 13.7 5.6  
15 12 2

6.7 4.4 1.4  
1 31 35

15.0 12.5 5.8  
15 12 3

2.0  
43



LORING ST.  
(CONT'D)

7/11/56

45

LT

RT

248.17

P.R.C. 2496<sup>03</sup>

8.5

12.6 10.0 8.2 7.1  
15 12 4 1

4.3  
35 EDGE OIL ROAD

3400

8.7

9.3 8.7 7.2  
15 11 1

4.4  
36

3425

9.8

9.2 8.1 9.8  
26 3 2

8.6 4.9  
24 30

3450

11.1

10.9 10.3 11.2  
18 6 4.5

10.5 5.4  
23 29

3475

12.4

11.9 12.6  
12 4

11.9 9.8  
22 27

3486 EDGE CONC. PAVT.

12.9

4400

13.5

12.8 13.0 13.5  
10 4 Top Cb. 4 GUTTER

13.6 13.1 10.8  
2A GUTTER 2A Top Cb. 30

4406<sup>22</sup> E.C.

13.7

13.0 13.7  
10 4

13.8 13.3 11.0  
2A GUTTER Top Cb.

SET TBM

9.14 246.92 10.39 237.78

Top F.H. 3482 5' LT.

10.62 254.24 3.30 243.62

7.97 261.49 0.72 253.52

CK. TBM

1.61 259.88 = 259.87

SEE Pg. 44



F.H. RELOCATION  
14<sup>th</sup> & RUSS ST.

2.17

1488<sup>3</sup>

2.17

7/11/56  
SHOREY  
KEMP  
VARONFAKIS  
SMITH

46

HUB MK'D 3' BK. Ch. B.C. 1490<sup>40</sup> F1 05

F1<sup>25</sup>

2<sup>1</sup> So. of S.E. Ch. B.C.



35  
 Alley BIK 38 N of Orange St  
 E of Wilson  
 Polian

West  
 Williams  
 Killhofer

8/2/56 17

6+86 Sly prop line El Cajon

Water Meters

West	East
1+00	1+33
1+66	1+35
2+14	1+37
2+44	2+12
2+95	2+36
3+17	2+88
3+57	4+20
4+17	4+53
4+68	4+60
5+20	5+07
5+40	5+63
6+34	5+97
	6+48

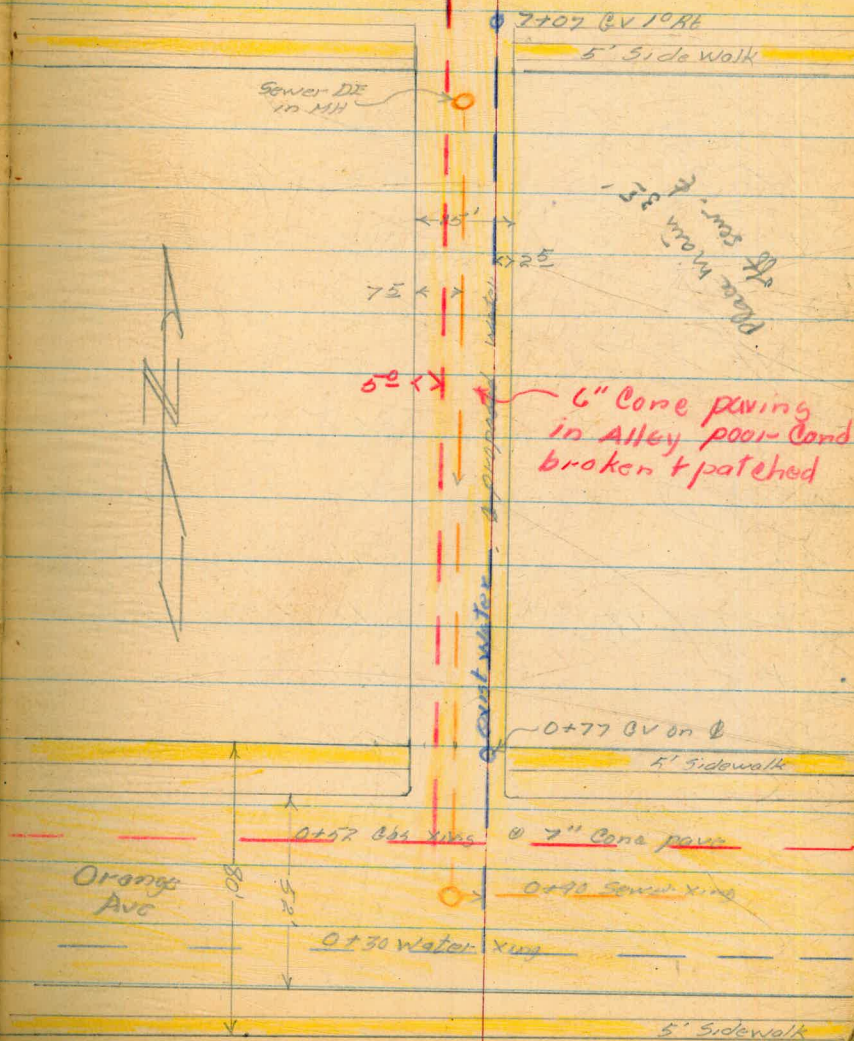
0+73 POT

0+00

Sly prop line Orange Ave

El Cajon Ave

7+22?





Alley East of Wilson N of Orange

Reduced by Lee  
8-21-56

3.53 380.58

377.05

0+00

4.9 375.68

+14

4.79 375.79

+14

5.19 375.39

+6.0 To Flow Line

+39

4.06 376.52

+50

4.15 376.43

+64

4.55 376.03

1+00

3.93 376.75

+50

3.70 376.88

2+00

3.36 377.22

+50

3.16 377.42

3+00

2.91 377.67

+6.0 To Flow Line

+27 5.93

383.59

2.92

377.66

+50

5.61 377.98

4+00

5.27 378.32

+50

5.37 378.22

5+00

5.32 378.27

+50

4.93 378.66

6+00

4.73 378.86

West  
Williams  
Kellhofer

0+77.84

5.11 37 380.26

48

8/2/56

BM NW BP Wilson Orange

Sly prop line Orange

Top of Sly Ob Orange

Batt

Top Ely Rim Sewer MH 5' 11"

Butter Line

Turn Top Ely Rim Sewer MH 5' 11"

86  
59  
27



383.59

+50		4.38	379.21	
			+56 to Flow	
+66		4.51	379.08	
7+00		4.71	378.88	
+06		4.81	378.78	
6.39	385.19	4.79	378.80	
		4.52	380.67 =	
5.12	387.23	7.08	378.11	
		5.11	378.12 =	
316	380.59	5.80	377.43	
3.68	380.78	3.49	377.10 =	
		3.75	377.03 =	

Top Fly rim sewer MH 4811

Gutter line S4 side El Cajon

380.08 SW BP El Cajon + Wilson

377.94 SW BP El Cajon + 36th

377.10 NW BP Wilson + Orange



Check Depth of 6" AC Main  
on Trojon Ave 131 South of E. of 54th

4.48	356.14	351.66
8.21	347.93	
5.78	350.36	
4.48	351.66	

West  
Williams  
Kellhofer

50

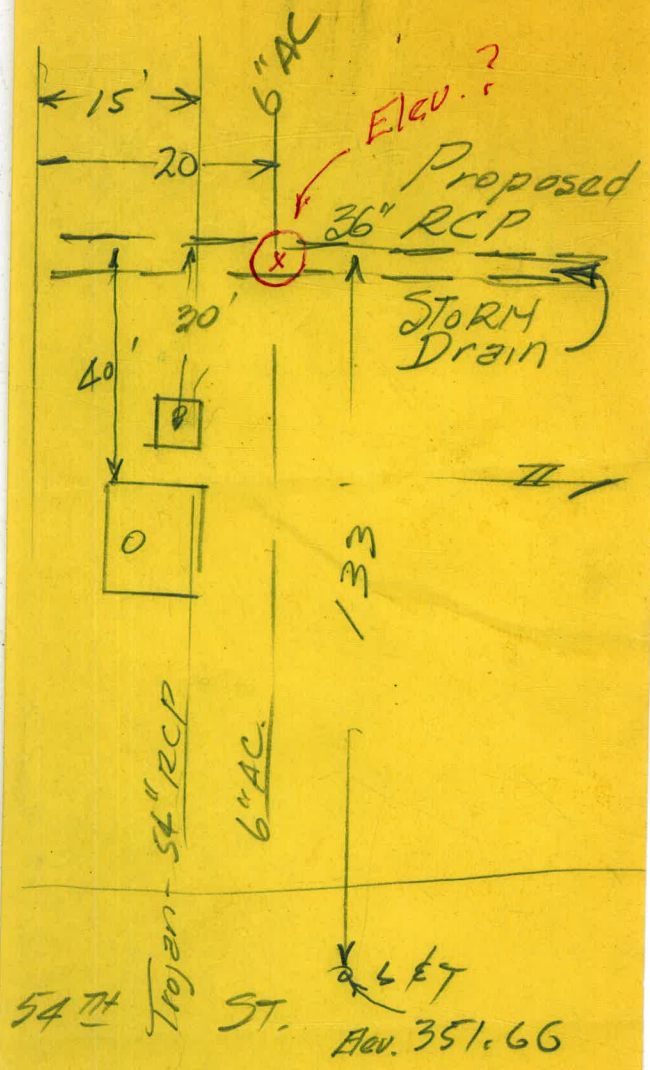
9/2/56

BM L+T @ 54th & Trojon

Top of 6" AC pipe

Top AC pave







Alley BIK 28 N of Orange E of 40th

Pelims proposed Pl.

6+86±

Sly prop line El Cajon

Water Meters	
West	East
1+19	1+15
1+82	2+05
2+20	2+61
2+69	3+02
3+00	3+41
3+43	3+84
3+99	4+14
4+33	4+78
4+67	4+96
5+38	5+58
5+83	6+09
6+28	6+30
6+35	6+31

0+73

POT

0+00

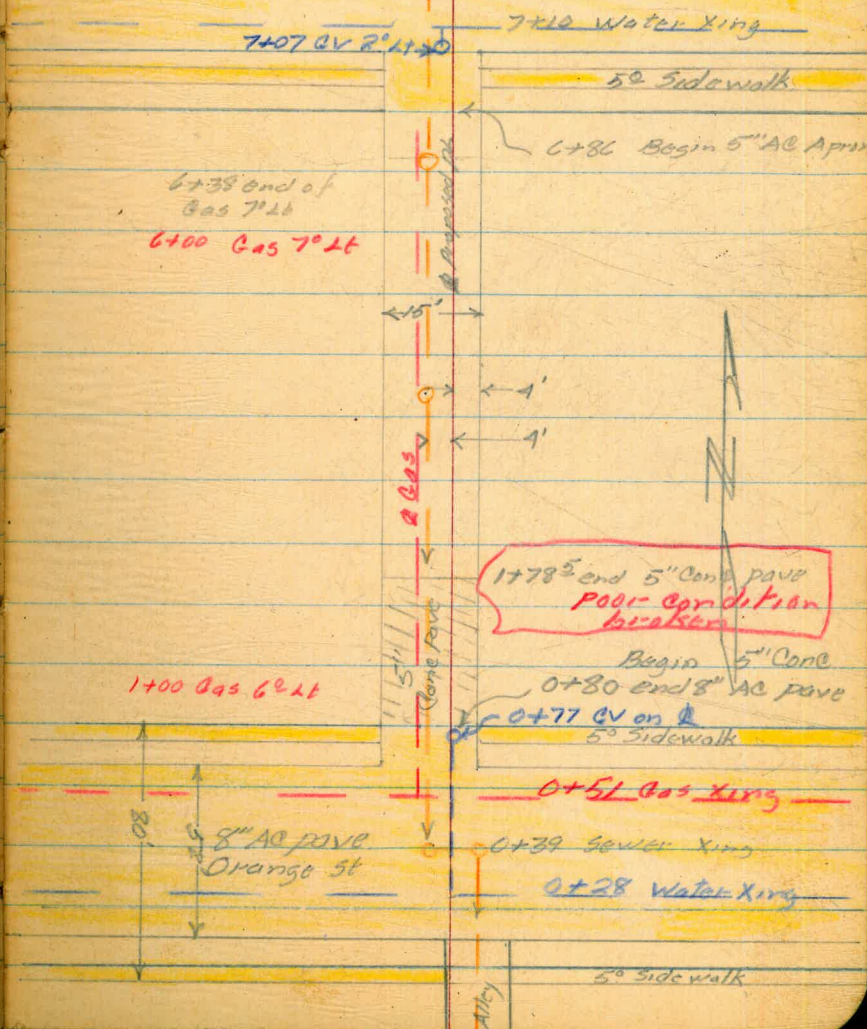
Sly prop line Orange

West  
Williams  
Kellhofer

51

8/21/56

El Cajon





2 Profile Alloy Bk 28  
E of 40<sup>th</sup> St N of Orange

Red. by  
H. Wada  
8-8-56

West  
Williams  
Kellhofer

52

8/2/56

	4.34	368.96	364.62	
0+00			5.27	363.69 ✓
+13			5.55	363.41 ✓ +8.4 To Flow
+39			4.67	364.29 ✓
+50			4.66	364.30 ✓
+64			5.1	363.86 ✓
1+00			4.53	364.43 ✓
+50			3.80	365.16 ✓
2+00			3.3	365.66 ✓
+50			2.6	366.36 ✓
3+00			2.5	366.46 ✓ +9.3 to Flow Line
+49	5.76	372.19	2.53	366.43 ✓
+50			5.7	366.49 ✓
4+00			5.5	366.69 ✓
+50			5.0	367.19 ✓
5+00			5.0	367.19 ✓
+50			5.2	366.99 ✓
6+00			5.6	366.59 ✓
+50			6.6	365.59 ✓ +7.1 To Flow
+65			6.7	365.49 ✓

BM NW BP 40<sup>th</sup> + Orange

Sly prop line Orange

Sly gutter " Orange

Top Fly rim sewer MH 4' Lt

Gutter Line

Top Fly rim sewer MH 4' Lt

Fly rim sewer MH 3' Lt



prior line

372.19

6+86

6.91 365.28 ✓

Begin AC pave

7+00

7.19 365.00 ✓

+06

7.27 364.92 ✓

Cutter line Sly Side E1 Canyon

5.26 370.31 7.14 365.05

1.37 5.47 364.84 =

364.64 SW BP Central E1 Canyon

4.30 370.56 4.05 366.26

5.94 364.62



21<sup>st</sup> St C<sup>st</sup> to B<sup>st</sup>

Pelvic

4+60 52

Sly prop line B<sup>st</sup>

3+87 53 P.O.T

Water Met West	
1+79	1124-26-30
2+35	1142
2+91	1150
3+30	1158
3+60	1172
Water Met East	
1+01	
1+44	1121
2+00	1133
2+54	1145
3+24	1161

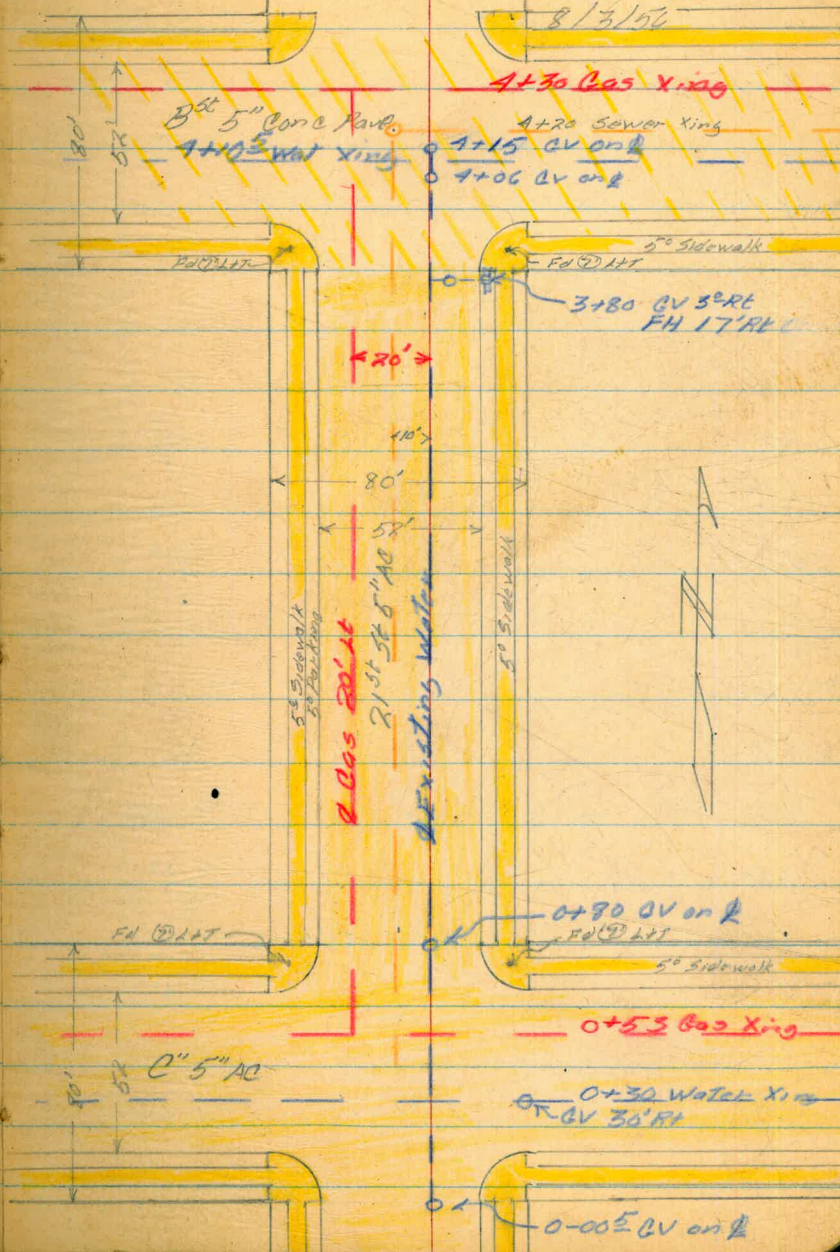
0+73 P.O.T

0+00

Sly prop line C<sup>st</sup>

West  
Williams  
Kullhofer

51





21<sup>st</sup> C<sup>st</sup> to B<sup>st</sup>

114.87

55

Profile

Reduced by L. ee.  
8-20-56

	8.79	121.80	113.01
0+00		7.74	114.06
+14		8.05	113.75
+40		7.68	114.12
+50		7.77	114.03
+66		7.82	113.98
1+00		6.32	115.48
+50		3.85	117.95
2+00		1.41	119.39
+50		0.25	121.55
3+00		1.17	120.63
+50		1.97	119.83
+80		2.74	119.06
4+00		3.14	118.66
+20		3.60	118.20
+50		4.31	117.49
+60 <sup>57</sup>		3.77	118.03
	8.38	121.91	8.27 113.53
	6.03	121.16	6.78 115.13
		6.83	114.33 = 114.45

NW BP 21<sup>st</sup> + C<sup>st</sup>Sly prop line C<sup>st</sup>

Cutter-line

Cutter-line

Begin 5" Conc pavement on B<sup>st</sup>Ely Rim  
Top Sewer MH 10' LFSly prop line B<sup>st</sup>NW BP 21<sup>st</sup> + E<sup>st</sup>

56



0216 GAS MAIN ✓  
 0438 WATER MAIN ✓  
 1444 SPT END CB. ✓  
 1446 W.M.E. ✓  
 1495 SPT END CB. ✓  
 2112 SPT END CB. ✓  
 2434  
 0463 CB. 38' LT. & 16' RT.  
 0446 W.M.E.  
 0423 G.V. 25' LT.

10.34

3735.35  
 10.34  
 3725.01

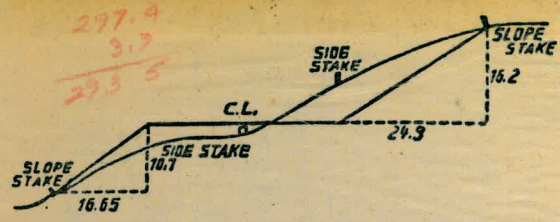
2642  
 15  
 13210  
 2642  
 39690  
 75

162.90  
 185.6

53.04  
 53.56  
 180.60  
 107.00  
 73

363.73  
 15  
 3748.73  
 12

59.62  
 19.26  
 78.88  
 64.43  
 143.31



DISTANCES FROM SIDE STAKES FOR CROSS-SECTIONING.  
 SLOPE 1 1/2 TO 1. ROADWAY OF ANY WIDTH.

	0	.1	.2	.3	.4	.5	.6	.7	.8	.9	
0	0.00	0.15	0.30	0.45	0.60	0.75	0.90	1.05	1.20	1.35	0
1	1.50	1.65	1.80	1.95	2.10	2.25	2.40	2.55	2.70	2.85	1
2	3.00	3.15	3.30	3.45	3.60	3.75	3.90	4.05	4.20	4.35	2
3	4.50	4.65	4.80	4.95	5.10	5.25	5.40	5.55	5.70	5.85	3
4	6.00	6.15	6.30	6.45	6.60	6.75	6.90	7.05	7.20	7.35	4
5	7.50	7.65	7.80	7.95	8.10	8.25	8.40	8.55	8.70	8.85	5
6	9.00	9.15	9.30	9.45	9.60	9.75	9.90	10.05	10.20	10.35	6
7	10.50	10.65	10.80	10.95	11.10	11.25	11.40	11.55	11.70	11.85	7
8	12.00	12.15	12.30	12.45	12.60	12.75	12.90	13.05	13.20	13.35	8
9	13.50	13.65	13.80	13.95	14.10	14.25	14.40	14.55	14.70	14.85	9
10	15.00	15.15	15.30	15.45	15.60	15.75	15.90	16.05	16.20	16.35	10
11	16.50	16.65	16.80	16.95	17.10	17.25	17.40	17.55	17.70	17.85	11
12	18.00	18.15	18.30	18.45	18.60	18.75	18.90	19.05	19.20	19.35	12
13	19.50	19.65	19.80	19.95	20.10	20.25	20.40	20.55	20.70	20.85	13
14	21.00	21.15	21.30	21.45	21.60	21.75	21.90	22.05	22.20	22.35	14
15	22.50	22.65	22.80	22.95	23.10	23.25	23.40	23.55	23.70	23.85	15
16	24.00	24.15	24.30	24.45	24.60	24.75	24.90	25.05	25.20	25.35	16
17	25.50	25.65	25.80	25.95	26.10	26.25	26.40	26.55	26.70	26.85	17
18	27.00	27.15	27.30	27.45	27.60	27.75	27.90	28.05	28.20	28.35	18
19	28.50	28.65	28.80	28.95	29.10	29.25	29.40	29.55	29.70	29.85	19
20	30.00	30.15	30.30	30.45	30.60	30.75	30.90	31.05	31.20	31.35	20
21	31.50	31.65	31.80	31.95	32.10	32.25	32.40	32.55	32.70	32.85	21
22	33.00	33.15	33.30	33.45	33.60	33.75	33.90	34.05	34.20	34.35	22
23	34.50	34.65	34.80	34.95	35.10	35.25	35.40	35.55	35.70	35.85	23
24	36.00	36.15	36.30	36.45	36.60	36.75	36.90	37.05	37.20	37.35	24
25	37.50	37.65	37.80	37.95	38.10	38.25	38.40	38.55	38.70	38.85	25
26	39.00	39.15	39.30	39.45	39.60	39.75	39.90	40.05	40.20	40.35	26
27	40.50	40.65	40.80	40.95	41.10	41.25	41.40	41.55	41.70	41.85	27
28	42.00	42.15	42.30	42.45	42.60	42.75	42.90	43.05	43.20	43.35	28
29	43.50	43.65	43.80	43.95	44.10	44.25	44.40	44.55	44.70	44.85	29
30	45.00	45.15	45.30	45.45	45.60	45.75	45.90	46.05	46.20	46.35	30
31	46.50	46.65	46.80	46.95	47.10	47.25	47.40	47.55	47.70	47.85	31
32	48.00	48.15	48.30	48.45	48.60	48.75	48.90	49.05	49.20	49.35	32
33	49.50	49.65	49.80	49.95	50.10	50.25	50.40	50.55	50.70	50.85	33
34	51.00	51.15	51.30	51.45	51.60	51.75	51.90	52.05	52.20	52.35	34
35	52.50	52.65	52.80	52.95	53.10	53.25	53.40	53.55	53.70	53.85	35
36	54.00	54.15	54.30	54.45	54.60	54.75	54.90	55.05	55.20	55.35	36
37	55.50	55.65	55.80	55.95	56.10	56.25	56.40	56.55	56.70	56.85	37
38	57.00	57.15	57.30	57.45	57.60	57.75	57.90	58.05	58.20	58.35	38
39	58.50	58.65	58.80	58.95	59.10	59.25	59.40	59.55	59.70	59.85	39
40	60.00	60.15	60.30	60.45	60.60	60.75	60.90	61.05	61.20	61.35	40
41	61.50	61.65	61.80	61.95	62.10	62.25	62.40	62.55	62.70	62.85	41
42	63.00	63.15	63.30	63.45	63.60	63.75	63.90	64.05	64.20	64.35	42
43	64.50	64.65	64.80	64.95	65.10	65.25	65.40	65.55	65.70	65.85	43
44	66.00	66.15	66.30	66.45	66.60	66.75	66.90	67.05	67.20	67.35	44
45	67.50	67.65	67.80	67.95	68.10	68.25	68.40	68.55	68.70	68.85	45
46	69.00	69.15	69.30	69.45	69.60	69.75	69.90	70.05	70.20	70.35	46
47	70.50	70.65	70.80	70.95	71.10	71.25	71.40	71.55	71.70	71.85	47
48	72.00	72.15	72.30	72.45	72.60	72.75	72.90	73.05	73.20	73.35	48
49	73.50	73.65	73.80	73.95	74.10	74.25	74.40	74.55	74.70	74.85	49
50	75.00	75.15	75.30	75.45	75.60	75.75	75.90	76.05	76.20	76.35	50

THE NATIONAL BLANK BOOK COMPANY  
 HOLYOKE MASSACHUSETTS  
 NEW YORK CHICAGO BOSTON SAN FRANCISCO