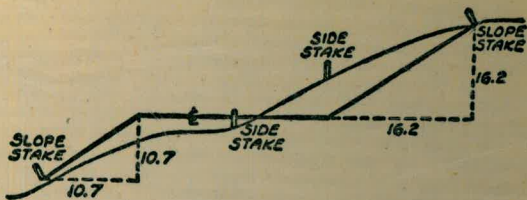


W 926



DISTANCES FROM SIDE STAKES FOR CROSS-SECTIONING
SLOPE 1 TO 1. ROADWAY OF ANY WIDTH

	0	.1	.2	.3	.4	.5	.6	.7	.8	.9	
0	0.00	0.10	0.20	0.30	0.40	0.50	0.60	0.70	0.80	0.90	0
1	1.00	1.10	1.20	1.30	1.40	1.50	1.60	1.70	1.80	1.90	1
2	2.00	2.10	2.20	2.30	2.40	2.50	2.60	2.70	2.80	2.90	2
3	3.00	3.10	3.20	3.30	3.40	3.50	3.60	3.70	3.80	3.90	3
4	4.00	4.10	4.20	4.30	4.40	4.50	4.60	4.70	4.80	4.90	4
5	5.00	5.10	5.20	5.30	5.40	5.50	5.60	5.70	5.80	5.90	5
6	6.00	6.10	6.20	6.30	6.40	6.50	6.60	6.70	6.80	6.90	6
7	7.00	7.10	7.20	7.30	7.40	7.50	7.60	7.70	7.80	7.90	7
8	8.00	8.10	8.20	8.30	8.40	8.50	8.60	8.70	8.80	8.90	8
9	9.00	9.10	9.20	9.30	9.40	9.50	9.60	9.70	9.80	9.90	9
10	10.00	10.10	10.20	10.30	10.40	10.50	10.60	10.70	10.80	10.90	10
11	11.00	11.10	11.20	11.30	11.40	11.50	11.60	11.70	11.80	11.90	11
12	12.00	12.10	12.20	12.30	12.40	12.50	12.60	12.70	12.80	12.90	12
13	13.00	13.10	13.20	13.30	13.40	13.50	13.60	13.70	13.80	13.90	13
14	14.00	14.10	14.20	14.30	14.40	14.50	14.60	14.70	14.80	14.90	14
15	15.00	15.10	15.20	15.30	15.40	15.50	15.60	15.70	15.80	15.90	15
16	16.00	16.10	16.20	16.30	16.40	16.50	16.60	16.70	16.80	16.90	16
17	17.00	17.10	17.20	17.30	17.40	17.50	17.60	17.70	17.80	17.90	17
18	18.00	18.10	18.20	18.30	18.40	18.50	18.60	18.70	18.80	18.90	18
19	19.00	19.10	19.20	19.30	19.40	19.50	19.60	19.70	19.80	19.90	19
20	20.00	20.10	20.20	20.30	20.40	20.50	20.60	20.70	20.80	20.90	20
21	21.00	21.10	21.20	21.30	21.40	21.50	21.60	21.70	21.80	21.90	21
22	22.00	22.10	22.20	22.30	22.40	22.50	22.60	22.70	22.80	22.90	22
23	23.00	23.10	23.20	23.30	23.40	23.50	23.60	23.70	23.80	23.90	23
24	24.00	24.10	24.20	24.30	24.40	24.50	24.60	24.70	24.80	24.90	24
25	25.00	25.10	25.20	25.30	25.40	25.50	25.60	25.70	25.80	25.90	25
26	26.00	26.10	26.20	26.30	26.40	26.50	26.60	26.70	26.80	26.90	26
27	27.00	27.10	27.20	27.30	27.40	27.50	27.60	27.70	27.80	27.90	27
28	28.00	28.10	28.20	28.30	28.40	28.50	28.60	28.70	28.80	28.90	28
29	29.00	29.10	29.20	29.30	29.40	29.50	29.60	29.70	29.80	29.90	29
30	30.00	30.10	30.20	30.30	30.40	30.50	30.60	30.70	30.80	30.90	30
31	31.00	31.10	31.20	31.30	31.40	31.50	31.60	31.70	31.80	31.90	31
32	32.00	32.10	32.20	32.30	32.40	32.50	32.60	32.70	32.80	32.90	32
33	33.00	33.10	33.20	33.30	33.40	33.50	33.60	33.70	33.80	33.90	33
34	34.00	34.10	34.20	34.30	34.40	34.50	34.60	34.70	34.80	34.90	34
35	35.00	35.10	35.20	35.30	35.40	35.50	35.60	35.70	35.80	35.90	35
36	36.00	36.10	36.20	36.30	36.40	36.50	36.60	36.70	36.80	36.90	36
37	37.00	37.10	37.20	37.30	37.40	37.50	37.60	37.70	37.80	37.90	37
38	38.00	38.10	38.20	38.30	38.40	38.50	38.60	38.70	38.80	38.90	38
39	39.00	39.10	39.20	39.30	39.40	39.50	39.60	39.70	39.80	39.90	39
40	40.00	40.10	40.20	40.30	40.40	40.50	40.60	40.70	40.80	40.90	40
41	41.00	41.10	41.20	41.30	41.40	41.50	41.60	41.70	41.80	41.90	41
42	42.00	42.10	42.20	42.30	42.40	42.50	42.60	42.70	42.80	42.90	42
43	43.00	43.10	43.20	43.30	43.40	43.50	43.60	43.70	43.80	43.90	43
44	44.00	44.10	44.20	44.30	44.40	44.50	44.60	44.70	44.80	44.90	44
45	45.00	45.10	45.20	45.30	45.40	45.50	45.60	45.70	45.80	45.90	45
46	46.00	46.10	46.20	46.30	46.40	46.50	46.60	46.70	46.80	46.90	46
47	47.00	47.10	47.20	47.30	47.40	47.50	47.60	47.70	47.80	47.90	47
48	48.00	48.10	48.20	48.30	48.40	48.50	48.60	48.70	48.80	48.90	48
49	49.00	49.10	49.20	49.30	49.40	49.50	49.60	49.70	49.80	49.90	49
50	50.00	50.10	50.20	50.30	50.40	50.50	50.60	50.70	50.80	50.90	50

Distance of slope stake from side or shoulder stake for any width roadway, slope 1 to 1. If ground is fairly level, the cut or fill at side stake is located by the double entry method in left column and top row. The number in body of table in same row and column gives distance from side stake to slope stake. If ground is not level estimate the difference in elevation between the side stake and slope stake, lower target by this amount if cut, elevate if fill. Add this amount to cut or fill and distance in table. Set up rod at this point, and line of sight should cut target. If it does not make the slight adjustment necessary.

REPRODUCED
 BY
 APR 26 1965

TABLE XIII—CORRECTIONS FOR TANGENTS AND EXTERNALS

These corrections are to be added to the approximate values, found by dividing the tangent, or external, for a 1° curve (Table VIII) by the degree of curve, in order to obtain the true tangents, or externals. Intermediate values may be obtained by interpolation.

FOR TANGENTS ADD

Central Angle	DEGREE OF CURVE														
	5°	10°	15°	20°	25°	30°	35°	40°	45°	50°	55°	60°	65°	70°	
10°	.03	.06	.09	.13	.16	.19	.22	.25	.28	.31	.34	.38	.42	.46	
15°	.04	.10	.14	.19	.24	.29	.34	.39	.45	.51	.53	.58	.63	.68	
20°	.06	.13	.19	.26	.32	.39	.45	.51	.58	.65	.72	.79	.84	.90	
25°	.08	.16	.24	.33	.40	.49	.58	.67	.75	.83	.90	.99	1.06	1.14	
30°	.10	.19	.29	.39	.49	.59	.69	.79	.89	.99	1.09	1.20	1.29	1.39	
35°	.11	.22	.34	.47	.58	.69	.79	.81	.92	1.04	1.29	1.42	1.54	1.66	
40°	.13	.26	.40	.53	.67	.80	.93	1.06	1.20	1.34	1.49	1.64	1.79	1.94	
45°	.15	.30	.44	.60	.76	.91	1.06	1.21	1.37	1.52	1.70	1.87	2.04	2.21	
50°	.17	.34	.51	.68	.85	1.02	1.19	1.36	1.54	1.72	1.91	2.10	2.29	2.48	
55°	.19	.38	.57	.76	.95	1.14	1.32	1.52	1.72	1.92	2.14	2.35	2.56	2.77	
60°	.21	.42	.63	.84	1.05	1.27	1.49	1.71	1.94	2.17	2.38	2.60	2.83	3.07	
65°	.23	.46	.69	.93	1.16	1.40	1.64	1.88	2.13	2.38	2.63	2.88	3.13	3.39	
70°	.25	.51	.76	1.02	1.28	1.54	1.80	2.06	2.33	2.60	2.88	3.16	3.44	3.72	
75°	.27	.56	.83	1.12	1.40	1.69	1.98	2.27	2.57	2.87	3.16	3.47	3.78	4.09	
80°	.30	.61	.91	1.22	1.53	1.84	2.15	2.46	2.78	3.10	3.44	3.78	4.12	4.46	
85°	.33	.66	1.00	1.33	1.68	2.02	2.36	2.70	3.05	3.40	3.77	4.14	4.55	4.89	
90°	.36	.72	1.09	1.45	1.83	2.20	2.57	2.94	3.32	3.70	4.10	4.50	4.91	5.32	
95°	.39	.79	1.19	1.55	2.00	2.40	2.80	3.20	3.61	4.02	4.40	4.98	5.38	5.83	
100°	.43	.86	1.30	1.74	2.18	2.62	3.06	3.50	3.95	4.40	4.88	5.37	5.85	6.34	
110°	.51	1.03	1.56	2.08	2.61	3.14	3.67	4.21	4.76	5.31	5.86	6.43	7.01	7.60	
120°	.62	1.25	1.93	2.52	3.16	3.81	4.45	5.11	5.77	6.44	7.12	7.80	8.50	9.22	

FOR EXTERNALS ADD

Central Angle	DEGREE OF CURVE														
	5°	10°	15°	20°	25°	30°	35°	40°	45°	50°	55°	60°	65°	70°	
10°	.001	.003	.004	.006	.007	.008	.009	.011	.012	.014	.015	.017	.018	.020	
15°	.003	.007	.010	.014	.018	.023	.027	.029	.032	.035	.039	.043	.047	.051	
20°	.006	.011	.017	.022	.028	.034	.038	.045	.051	.057	.063	.070	.076	.083	
25°	.009	.018	.027	.036	.046	.056	.065	.074	.083	.093	.106	.120	.127	.135	
30°	.013	.025	.038	.051	.065	.078	.090	.103	.116	.129	.149	.170	.179	.188	
35°	.018	.035	.054	.072	.086	.109	.131	.153	.175	.197	.213	.230	.247	.264	
40°	.023	.046	.070	.093	.117	.141	.172	.203	.234	.265	.277	.290	.315	.341	
45°	.030	.060	.093	.119	.153	.184	.216	.254	.289	.325	.351	.378	.411	.445	
50°	.037	.075	.116	.151	.189	.227	.266	.305	.345	.384	.425	.467	.508	.550	
55°	.046	.093	.142	.188	.236	.283	.332	.381	.420	.479	.530	.582	.641	.700	
60°	.056	.112	.168	.225	.283	.340	.398	.457	.516	.575	.636	.697	.774	.851	
65°	.067	.135	.204	.273	.343	.412	.483	.554	.625	.697	.711	.845	.922	1.01	
70°	.080	.159	.240	.321	.403	.485	.568	.652	.735	.819	.906	.994	1.08	1.17	
75°	.095	.182	.286	.383	.480	.578	.678	.777	.877	.977	1.07	1.18	1.29	1.39	
80°	.110	.220	.332	.445	.558	.671	.787	.903	1.02	1.13	1.25	1.38	1.50	1.62	
85°	.128	.259	.391	.524	.657	.790	.926	1.06	1.20	1.34	1.47	1.62	1.76	1.91	
90°	.149	.299	.450	.603	.756	.910	1.07	1.22	1.38	1.54	1.70	1.87	2.03	2.20	
95°	.174	.350	.522	.706	.885	1.06	1.25	1.43	1.62	1.80	1.99	2.18	2.38	2.58	
100°	.200	.401	.604	.809	1.01	1.22	1.43	1.64	1.85	2.06	2.28	2.50	2.73	2.96	
110°	.268	.536	.806	1.08	1.35	1.63	1.91	2.20	2.48	2.76	3.05	3.35	3.66	3.96	
120°	.360	.721	1.08	1.45	1.82	2.19	2.57	2.95	3.33	3.72	4.11	4.50	4.91	5.32	

INDEX

DICKINSON ST., FRONT TO 900' WLY. PRELIM. 1-3 ✓
 alicie ✓
 Exchange Pl Reservoir Property Lines A ✓
 and structure Survey 16
 alicie ✓
 Exchange Pl Reservoir ✓
 345 for Cone ret wall 18 ✓
 alicie ✓
 Exchange Pl. Res Elev of Cone ✓
 Footing of Ret Wall 20-23
 alicie ✓
 La Jolla Res. Top of Wall was built 24

DICKINSON ST.
FRONT ST. WLY 900'
PRELIMINARY

9+00 END

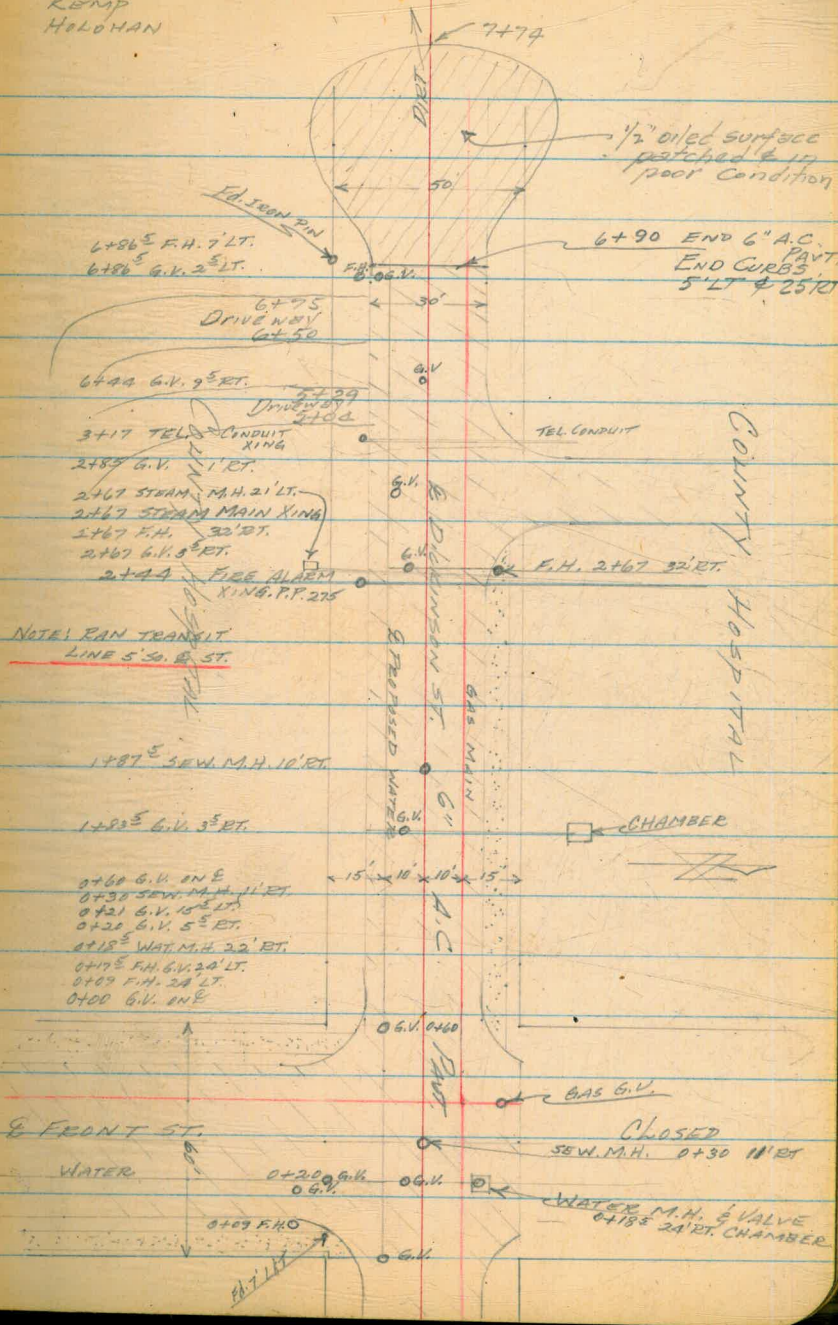
7-76 End (Patched) oil surface

6+90 END 6" A.C. PAVT. End CURB 5' LT & 25' RT.
Begin 1/2" (Patched, 4 in poor condition) oiled surface

6+75 }
6+50 }
5+29 } CONCRETE
5+04 } DRIVEWAY
4+05 } 10' LT
3+80 } TO
3+70 } HOSPITAL
3+50 } PARKING.
2+41 }
2+21 }

0+00 = ELY. LINE FRONT ST.

10/19/55
SHOREY
MARTELL
KEMP
HOLOHAN



DICKINSON ST.
FRONT ST. TO 900' W. WY.
PRELIMINARY

10/19/55
SHOREY
MAETELL
KEMP
HOLAHAN

2

B.M. 289.76

S.E. TOP E.H. DICKINSON & FRONT

338 293.14

0+00 6.1 289.0

+18.5

{ 5.64

WATER MANHOLE

+18.5

{ 10.20

TOP 8" WATER MAIN 22' RT.

+30

{ 5.50

SEWER M.H.

{ 8.16

E

+50

5.3

289.8

1+00

5.1

10-21-55

288.0

+50

4.9

Reduced by J Gray

288.2

+87.5

{ 4.29

SEWER M.H.

{ 7.2

E

2+00

4.7

288.4

+50

4.4

288.7

+67

{ 3.89

STEAM M.H. 22' LT.

{ 6.49

TOP STEAM PIPE

4.1

3+00

289.0

+50

3.8

289.3

4+00

3.5

289.6

T.P.

3.27 289.87

5.61 295.48

4+50

5.6

289.9

5+00

5.4

290.1

+50

5.1

290.4

6+00

4.9

290.6

CONT'D

3.

295.48

6+50	4.7	290.8
+87	4.4	291.1
7+00	3.5	292.0
+50	2.2	293.3
8+00	3.1	292.1
+50	4.9	290.6
9+00	5.6	289.9

T.B.M. 2.04 293.44

1.40 294.84

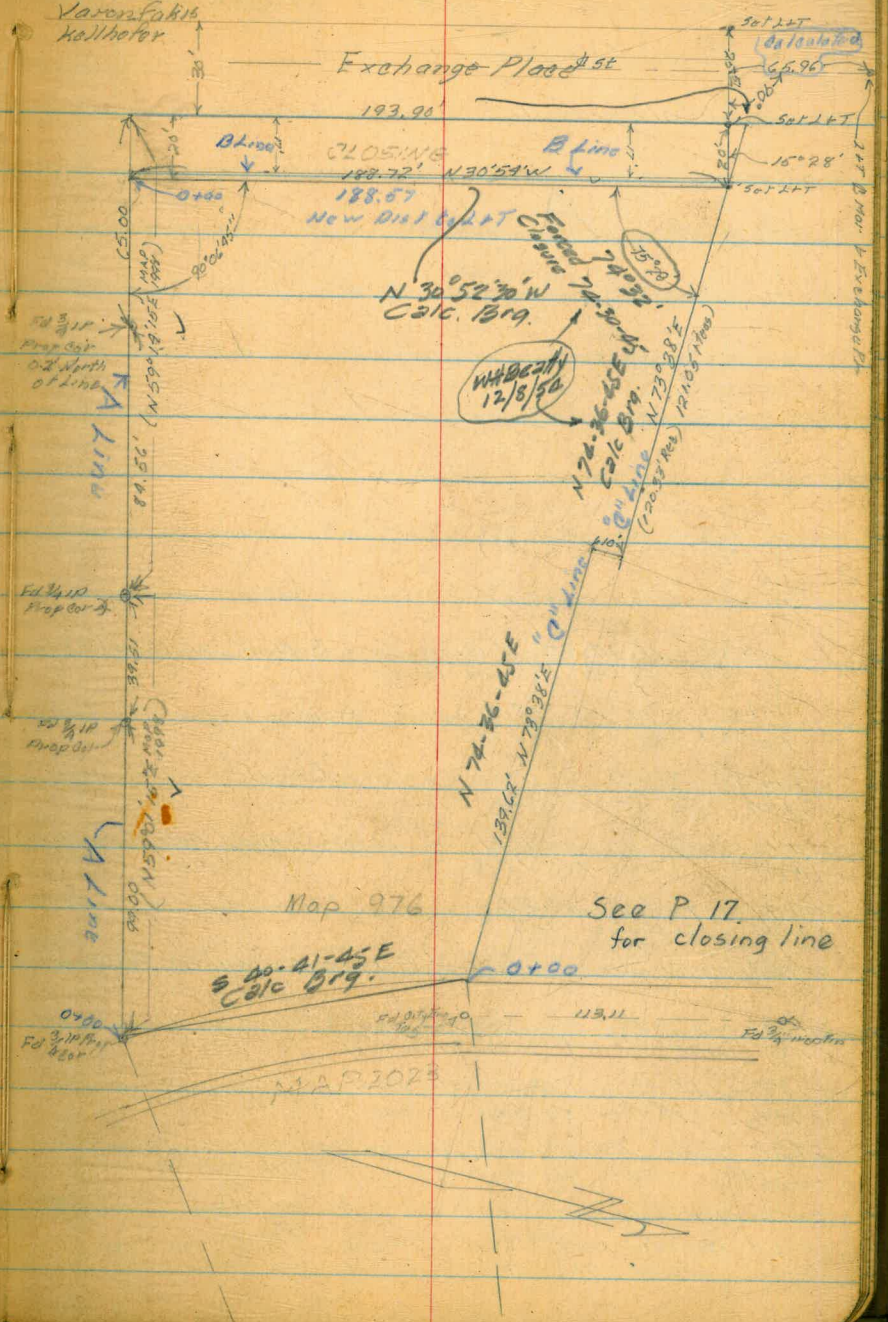
5.09 289.75 = 289.76

TOP E.H. DICKINSON ST. W. END. S. CURB

SE. TOP E.H. DICKINSON ST. FRONT

Exchange Place Res Plot Plan
 Showing Location of Control Found

West
 Williams
 Varentakis
 Kallhofer

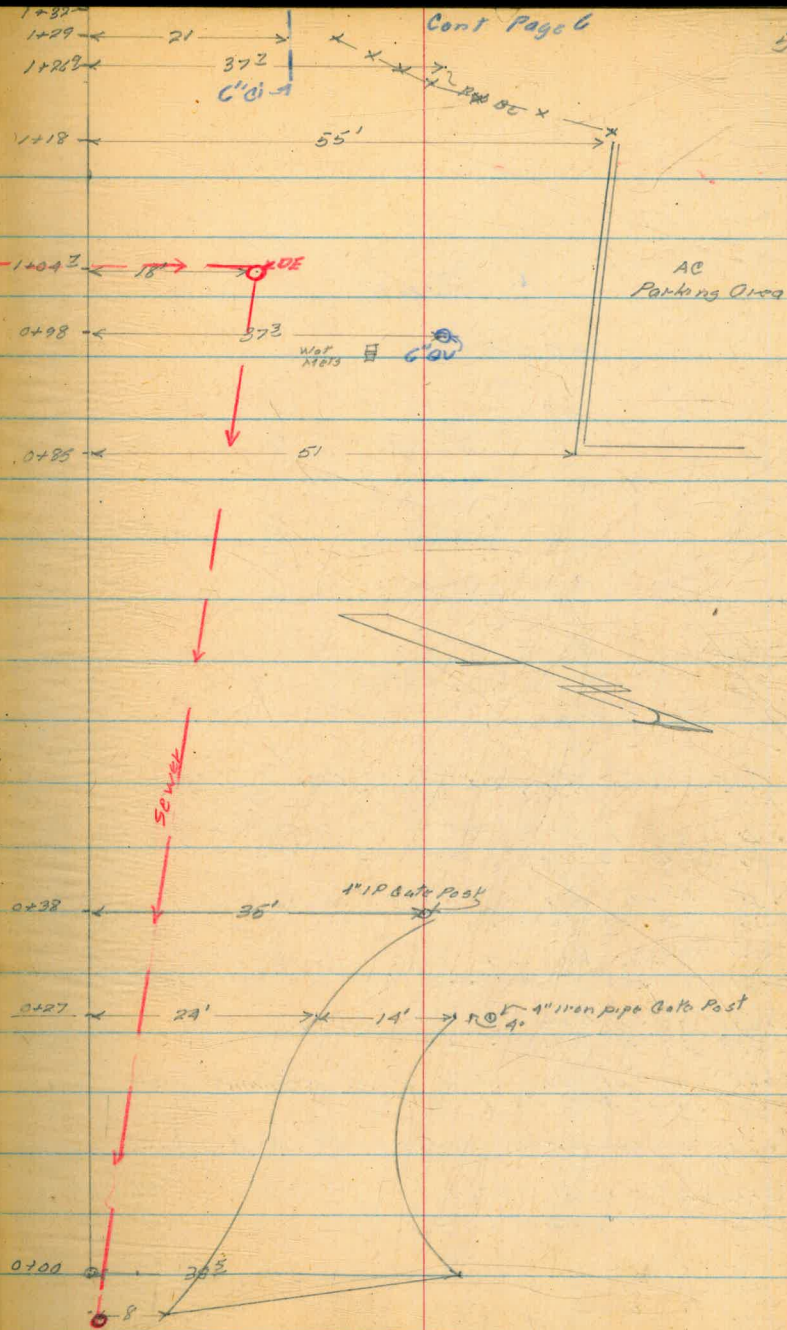


Location of existing structures
from Sly Property line

All locations are at 90° from prop line

A Line

- 1+32 16.49 RT 6' High Conc Retaining Wall 15" Thick
- 1+29 26' RT 6' Res Fence
- 1+29 21' RT 6" Ci Water Main
- 1+26 37 1/2 RT Res BC
- 1+23 36' RT 6" High cyclone fence
- 1+19 55' RT 6' High cyclone fence
- 1+18 55' RT end of AC parking Area end of Berm
- 1+042 Sewer MH 18' RT
- 0+98 37.2 RT 6" QV
- 0+97 2 Water Mts 31' RT
- 0+85 51' RT Beginning of 8" Berm AC parking Place
- 0+38 35' RT 4" Pipe Gate Post
- 0+27 12' RT 4" Pipe Gate Post
- 0+27 38 1/2 RT Nly edge of Conc driveway
- 0+27 24' RT edge of Conc driveway
- 0+00 38 1/2 RT Beginning of Nly edge of City Conc driveway
- 0+00 Prop Cor end
- 0-04 Beginning of City Conc driveway 8' RT
- 0-05 Sewer MH 2' RT



A Line Cont

2+28 35² RT. EC. of Res.
2+31² 39² RT. EC. of Cyano Fence

2+59² 2² LT. & 14² RT. Beg. 4" Rock Wall

2+49 6² LT. & 13² RT. Beg. 12" Terrace Wall
2+39 6² LT. & 11² RT. Beg. 12" Terrace Wall.

2+35 15² RT. & 4² LT. CONC. WALK Way
2+33 3² RT. WAT. Met.

2+31 9² RT. NW. COR. LATH House
2+31 3² RT. COR. Post LATH House Door

2+29¹ 1² LT. END of LATH House.
2+28 37² RT. FENCE LINE

2+25 16² RT. END of 15" CONC. RETAINING WALL
2+21 WAT. Met. ON E

2+20 Beg. LATH House 1² LT. & 9² RT.

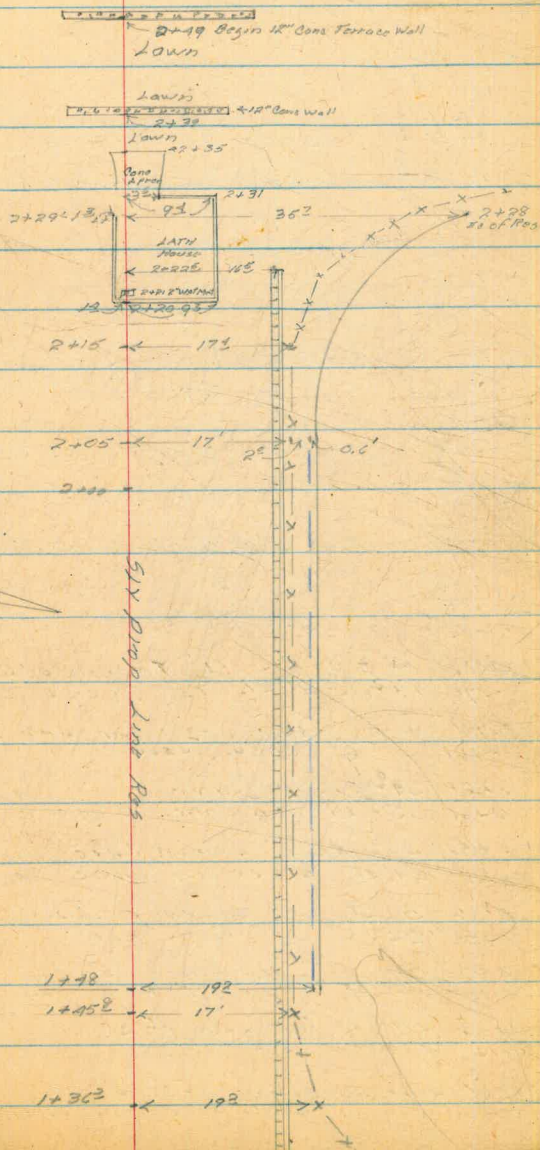
2+16 2" COPPER WATER SEE. FROM TOP 6" C.I.
2+15 17² RT. BC. FENCE LINE

2+05 19² RT. RESU. EC.
2+05 - 19² RT. to 6" C.I.

1+48 19² RT. EC. OF RESU.

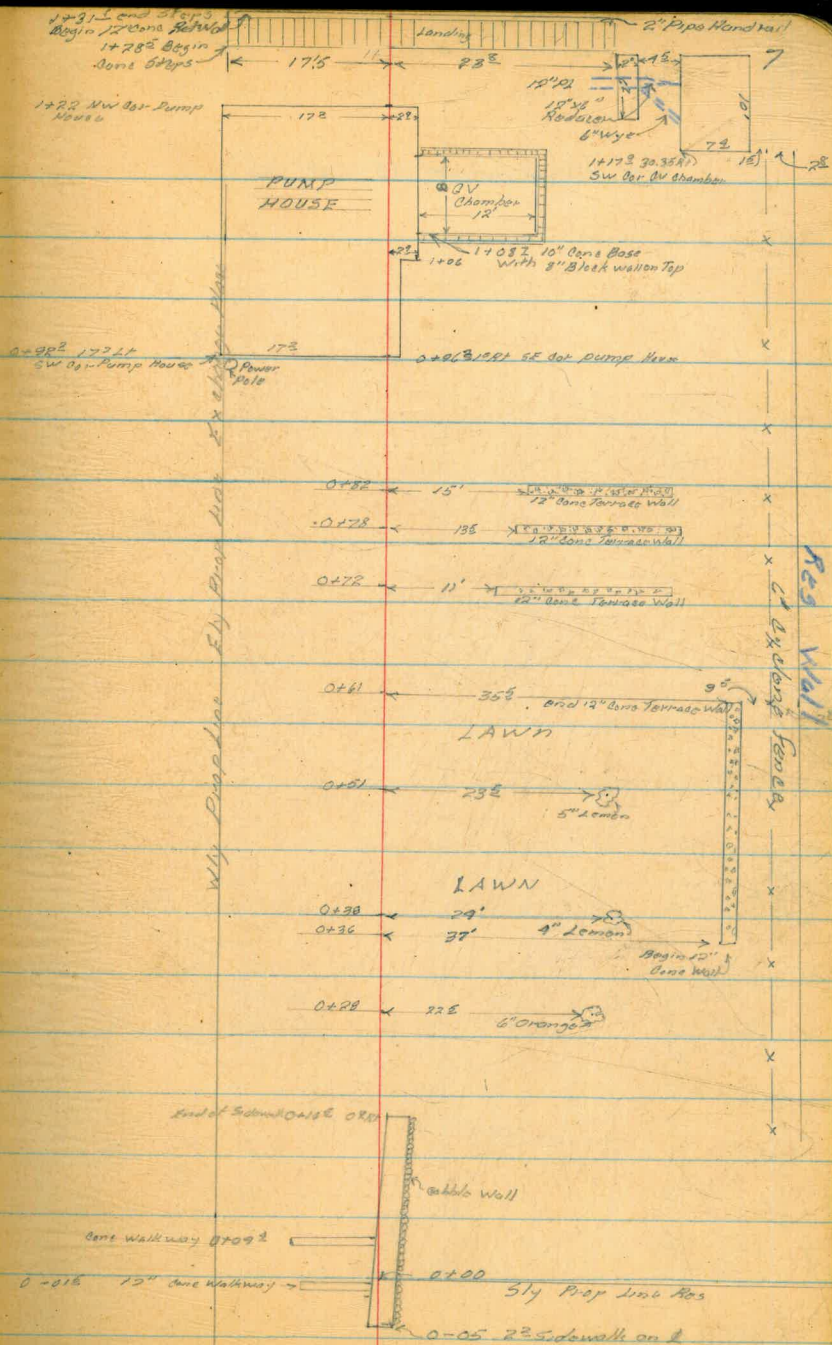
1+45² 17² RT. FENCE LINE

1+36² 19² RT. FENCE LINE



"B" Line Exchange Pl Res
 "B" Line 17' East of East Prop Line
 of Exchange Pl
 all measurements @ 90°

- 1+17² 42.0 RT B.C. RES. WALL
 1+17² 37.7 RT S.E. COR G.V. CHAMBER
 1+17² 30.35 RT S.W. COR G.V. CHAMBER
 1+22 17³/₂ RT. N.W. COR PUMP HOUSE
 1+22 2² RT. N.E. COR PUMP HOUSE
 1+16² 16² RT. N.E. COR G.V. CHAMBER
 1+16² 4² RT. N.W. COR G.V. CHAMBER
 1+08² 14² RT. S.W. COR G.V. CHAMBER
 1+08² 10' CON. BASE + 8" CON. BLOCK WALL 2² RT.
 1+06 2² RT. ROOF BORDER
 0+96² 17² LT S.W. COR PUMP HOUSE
 0+96² 1' RT S.E. COR PUMP HOUSE
 0+95² 8" DRAIN PIPE ON ⊥
 0+82 15²/₂ RT. 12" TERRACE WALL (CONC)
 0+78 13²/₂ RT. 12" TERRACE WALL (CONC)
 0+72 11²/₂ RT. 12" TERRACE WALL (CONC)
 0+61 4²/₂ RT. RESU. WALL
 0+61 39° OFFENCE LINE
 0+61 35²/₂ RT. 2ND CONC. TERRACE WALL
 0+51 23²/₂ RT. 5" LEMON TREE
 0+38 24²/₂ RT. 4" LEMON TREE
 0+36 37²/₂ RT. 12" TERRACE WALL
 0+35 22²/₂ RT. 6" ORANGE TREE
 0+17 END OF LATH FENCE 3²/₂ RT.
 0+16 31²/₂ RT. END OF 4" BLOCK WALL ON EDGE OF SIDE WALK
 0+15 END OF SIDE WALK 2²/₂ RT.
 0+12 4" GUAVA TREE 2²/₂ LT.
 0+04⁴ CONC. WALK WAY. 0²/₂ LT. @ 7²/₂ LT.
 0-01² 13²/₂ RT. 12" CONC. WALK WAY. 0²/₂ LT. @ 7²/₂ LT.
 0-05 Req. 2²/₂ CONC. WALL ON ⊥



"C" Line Exchange Place Res

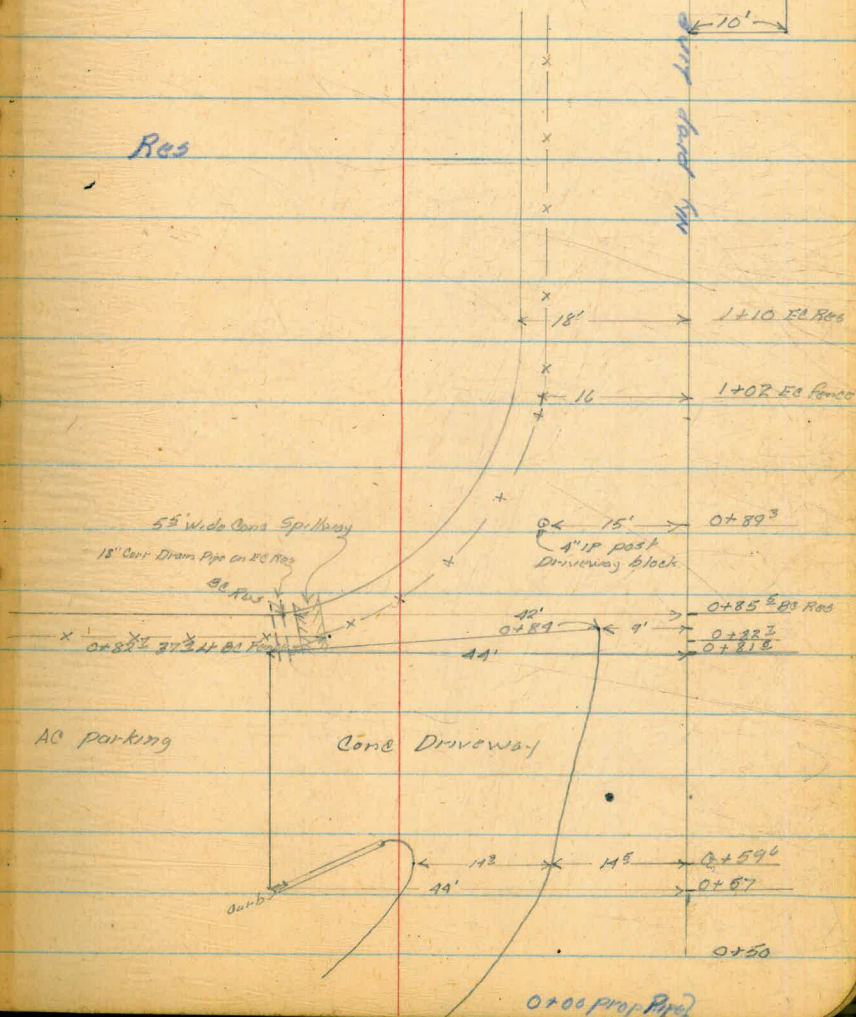
"C" Line on Property Line

All Measurements @ 90°

Nest
Williams
Varonakis
Kellhofer

11/21/55

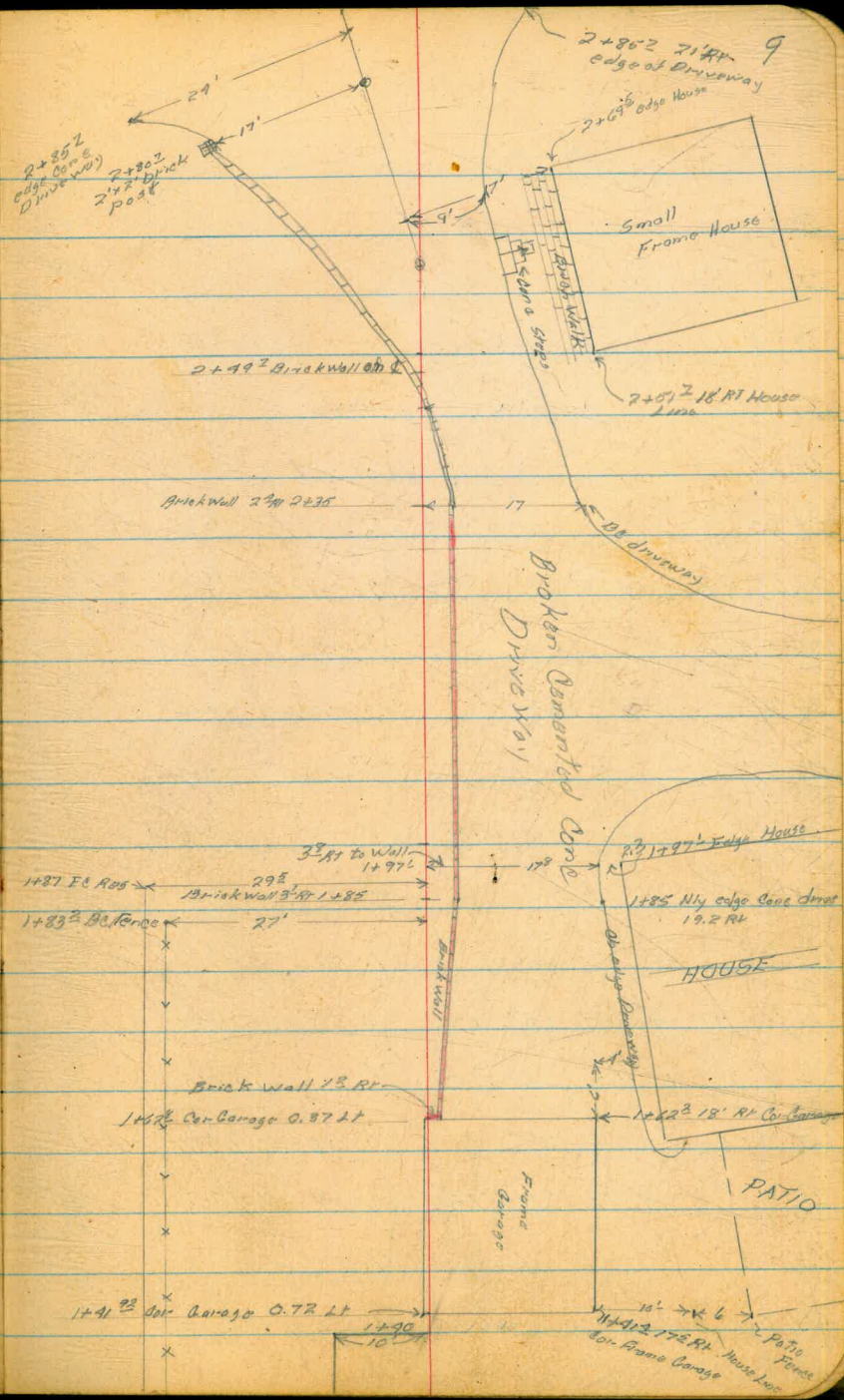
Cont Next Page



C Line Cont

2+79⁹⁵ New Prop Line Exchange Pt
for 20' street Closing

2+59⁹⁵ 15° 28' 11" New Property Line



EXCHANGE PLACE RESERVOIR

A Line profile

B.M.	0.46	265.44		264.98
T.P.	0.63	253.30	12.77	252.67
T.P.	0.69	240.76	13.23	240.07
0-05			8.45	
0-04			8.73	
0+00			7.95	
0+00.40			9.64	
0+27			4.5	
0+27			2.63	
0+27			2.10	
0+27			2.28	
0+38			0.95	
0+38			1.48	
T.P.	13.00	253.08	0.68	240.08
T.P.	12.50	265.22	0.36	252.72
CHECK B.M.			0.23	264.99 = 264.98
B.M.	9.77	274.75		264.98
0+85			7.60	
0+86			8.22	

WEST
WILLIAMS X
VARONFAKIS †
KELLHOFER

10

11/17/55 SHOWERS

END CON CURB (NELY) SEE F.B. 787-50

TOP NELY RIM SEWER M.H

BEGIN CON. DRIVE 8' RT

PROP COR. ON &

38⁵ RT BEGIN NLY EDGE CITY CON. DRIVE

24 RT. EDGE CON. DRIVE

38⁵ RT. NLY EDGE CON. DRIVE

40 RT TOP CURB

42 RT 4" PIPE GATE POST

37⁴ RT SLY EDGE CON. DRIVE

35 RT 4" PIPE GATE POST

11/18/55

51 RT. BEGINING 8" BERM A.C. PARKING

52 RT. A.C. PARKING PLACE (SURFACE)

EXCHANGE PLACE RESERVOIR

"A" LINE PROFILE

274.75

0+97	4.21
0+98	4.98
0+98	6.37
⁷ 1+04	3.18
1+18	7.03
1+17	7.74
⁹ 1+26	6.92
⁹ 1+26	8.86
⁹ 1+26	9.04
1+29	7.41
1+32	3.21
1+32	2.18
1+48	6.92
1+48	8.06
1+48	8.82
1+48	8.06
2+05	8.21
2+05	6.92
2+05	8.05
2+05	8.78

WEST
WILLIAMS X
VARONFAKIS †
KELLHOFER

11

11/18/55 SUNNY-COOL

2 WAT. MET (SHOT ON SHUT OFF LOCK)
37.3 RT. TOP 6" G.V.
37.8 RT TOP 6" PIPE
18' RT TOP N. RIM SEWER M.H.
^{8"} 55' RT END BERM (SHOT TOP BERM)
TOP A.C. PARKING AREA
⁷ 37' RT. TOP RESERVOIR B.C (WOOD)
⁷ 37' RT. TOP RESERVOIR B.C FOOTING (CON.)
⁷ 37' RT TOP RESERVOIR B.C DRAIN (CON)
21' RT TOP 6" C.I. MAIN
16.49 RT. TOP CON. RETAINING WALL
^{RETAINING} 16.49 RT. TOP CON. BLOCK ON WALL
19 ⁸ RT TOP RESERVOIR E.C. (WOOD)
19 ⁸ RT TOP RESERVOIR E.C. FOOTING (CON.)
19 ⁸ RT TOP RESERVOIR E.C. DRAIN (CON)
19 ⁸ RT TOP 6" C.I. MAIN
19 ² RT. TOP 6" C.I. MAIN
19 ⁶ RT. TOP RESERVOIR E.C. (WOOD)
19 ⁶ RT. TOP RESERVOIR E.C. FOOTING (CON)
19 ⁶ RT. TOP RESERVOIR E.C. DRAIN (CON)

EXCHANGE PLACE RESERVOIR

"A" LINE PROFILE

274.75

2+16		8.02	
2+21			
2+22 ⁵		4.40	
2+22 ⁵		3.37	
2+28		6.90	
2+28		8.02	
2+28		9.05	
T.P	5.47	273.41	6.81 267.94
T.P	9.54	278.34	4.61 268.80
2+29 ^L		1.42	
2+31		1.6	
2+35		2.35	
2+39		2.56	
2+49		4.38	
2+59 ⁵		6.08	
2+70		7.51	

"B" LINE PROFILE NEXT PAGE

12

11/18/55

TOP 6" C.I. MAIN WHERE 2" COPPER ENTERS		
WATER METER		
16 ⁵ RT. TOP CON. RETAINING WALL		
16 ⁵ RT. TOP CON. BLOCK ON RETAINING WALL		
35 ² RT. TOP RESERVOIR E.C. (WOOD)		
35 ² RT. TOP RESERVOIR E.C. FOOTING (CON)		
35 ² RT. TOP RESERVOIR E.C. DRAIN (CON)		
(0.77 TOP CON.)		
1 ³ LT. END OF LATH HOUSE FOUNDATION LATH H.		
3 ⁶ RT. COR. LATH HOUSE DOOR		
1.95	2.52	CON
4.2 LT	1.5 RT	WALK WAY
2.46	2.77	TERRACE
6.3 LT	11.5 RT	WALL
4.3	4.54	
6.2 LT	13.5 RT	TERRACE WALL
6.1	6.79	
2.8 LT	14 RT	ROCK WALL
7.34	8.23	
4.7 LT	16 RT	ROCK WALL

EXCHANGE PLACE RESERVOIR

"B" LINE PROFILE

278.34

0-05			8.80	
0-01 ⁵			9.01	
0+04 ⁴			9.26	
T.P. ⁵				
0+16	3.66	272.50	9.50	268.84
0+36			4.15	
0+61			4.56	
0+61			7.0	
0+72				
0+78				
0+82				
CHECK				
B.M.			7.53	264.97 = 264.98
B.M.	5.81	270.79		264.98
1+17 ⁹			2.08	
1+27 ⁹			2.15	
			3.79	
			3.78	
1+31 ^L			5.74	
T.P.	1.25	259.76	12.28	258.51
1+22			6.10	

13.

11/18/55

CONCRETE WALK &

0 ⁵ LT. CON. WALKWAY	9.22	75 LT.
0 ⁵ LT. CON. WALKWAY	9.44	70 LT.
0 ⁹ RT. END CON. WALK		
37' RT. TOP 12" TERRACE WALL (CON.)		
35 ⁵ RT. TOP 12" TERRACE CON. WALL		
41 ⁸ RT. RESERVOIR WALL (SHOT CON. DRAIN)		
	5.50	5.29
12" CON. TERRACE WALL	11' RT.	30' RT.
	5.69	5.48
12" CON. TERRACE WALL	13.5 RT.	31 RT.
	5.79	5.56
12" CON. TERRACE WALL	15 RT.	30' RT.
2		
37 RT. S.E. COR. G.V. CHAMBER		
N.E. COR. G.V. CHAMBER		
KICK BLOCK 5' WEST G.V. CHAMBER N.E. COR.		
KICK BLOCK 5' WEST G.V. CHAMBER S.E. COR.		
LANDING TOP CON. STEPS 29.16 RT. N.E. COR.		
17 ² LT. N.W. COR. PUMP HOUSE (TOP ROOF BORDER)	3.44	

EXCHANGE PLACE RESERVOIR

"B" LINE PROFILE

259.76

1+22		5.3	
0+99 ⁵		5.51	
0+99 ⁵		5.50	
1+16 ⁷		5.0	
1+16 ⁷		4.7	
1+08 ⁷		3.88	
1+31 ⁴		5.75	
T.P.	1.52	248.38	12.90 246.86
1+28 ⁵		6.02	242.36 248.36
T.P.	11.49	259.87	0.00 248.38
T.P.	11.91	271.06	0.72 259.15
CHECK			
B.M.		6.05	265.01 = 264.98

"C" LINE

B.M.	4.16	269.14	264.98
0+59 ⁶		6.74	
0+59 ⁶		5.56	
0+59 ⁶		7.08	
0+57		4.44	
0+57		4.02	

11/18/55

- ON ROOF (TOP ROOF BORDER)
- 2' RT. N.E. COR. PUMP HOUSE (4.4)
- ON ROOF (TOP ROOF BORDER)
- 1' RT. S.E. COR. PUMP HOUSE (4.33)
- ON ROOF (TOP ROOF BORDER)
- 17' LT. S.W. COR. PUMP HOUSE (3.44)
- 4⁹ RT. N.W. COR. G.V. CHAMBER
- 16⁹ RT. N.E. COR. G.V. CHAMBER (5.7 TO TOP CON. BLOCK WALL)
- 2⁹ RT. TOP CON. BASE S.W. COR. (12")
- 3' RT. CON. LANDING TOP CON. STEPS
- Bench moved
- 17⁵ LT. BOTTOM CON. STEP LANDING

11/21/55

RAINING 2:00 P.M.

- 5
- 14⁵ LT. EDGE CON. DRIVE
- 5
- 14 LT. TOP CON. BLOCK WALL
- 8
- 28⁸ LT. EDGE CON. DRIVE
- 44 LT. EDGE CON. (MEETS AC.)
- 44' LT. TOP CON. CURB

EXCHANGE PLACE RESERVOIR
"C" LINE PROFILE

15.

269.14

0+81 ⁵				3.55	
0+85 ⁵				1.39	
0+85 ⁵				2.46	
0+85 ⁵				3.50	265.64
0+85 ⁵				4.38	264.90
0+85 ⁵				2.19	
1+10				1.38	
1+10				2.49	
1+10				3.28	
1+37				1.40	
1+37				2.07	
1+37				3.42	
0+83				4.59	
T.P.	2.19	258.71	12.62	256.52	
1+41 ⁴				4.18	
1+41 ⁹				4.0	
1+62 ²				4.09	
1+62 ⁸				4.07	
1+63 ⁵				9.46	
T.P.	2.70	298.29	13.12	245.59	

11/21/55

44 LT EDGE CON. (MEETS A.C.)
 TOP RESERVOIR E.C (WOOD) 42 LT
 TOP RESERVOIR E.C FOOTING (CON) 42 LT
 TOP RESERVOIR E.C DRAIN (CON) 42 LT
 CON. OVERFLOW 35 LT
 TOP OVERFLOW LINE 39 LT (COR. PIPE)
 18 LT TOP RES. E.C (WOOD)
 18 LT TOP RES. E.C FOOTING (CON)
 18 LT TOP RES. E.C DRAIN (A.C.)
 19⁵ LT TOP RES. E.C (WOOD)
 19⁵ LT TOP RES. E.C FOOTING (CON)
 19⁵ LT TOP RES. E.C DRAIN (A.C.)
 9 LT EDGE CON. DRIVE (MEETS A.C.)

11/22/55

17⁵ RT TOP COR GARAGE BORDER (TOP ROOF) 4.97
 0.7 LT TOP COR GARAGE BORDER (TOP ROOF) 4.2
 18 RT TOP COR GARAGE BORDER (TOP ROOF) 4.44
 0.37 LT TOP COR GARAGE BORDER (TOP ROOF) 4.41
 1.2 RT TOP BRICK WALL

EXCHANGE PLACE RESERVOIR
"C" LINE PROFILE

248.29

1764	2.00	
1764	2.00	
+85	3.28	
+97 ¹	4.05	
+85	0.19	
2+35	6.40	
+35	6.73	
+35	3.35	
+49 ^I	5.71	242.58
+51 ^I	9.06	

T.P. 1.36 236.74 12.91 235.38

2+69 ⁵	1.91	
+80	1.23	
+85 ^I	0.94	

T.P. 11.22 247.96 0.00 236.74

CHECK T.B.M. 5.63 242.33 = 248.36

WEST
WILLIAMS
VARONFAKIS &
KELLHOFER X

16.

11/22/55 SUNNY

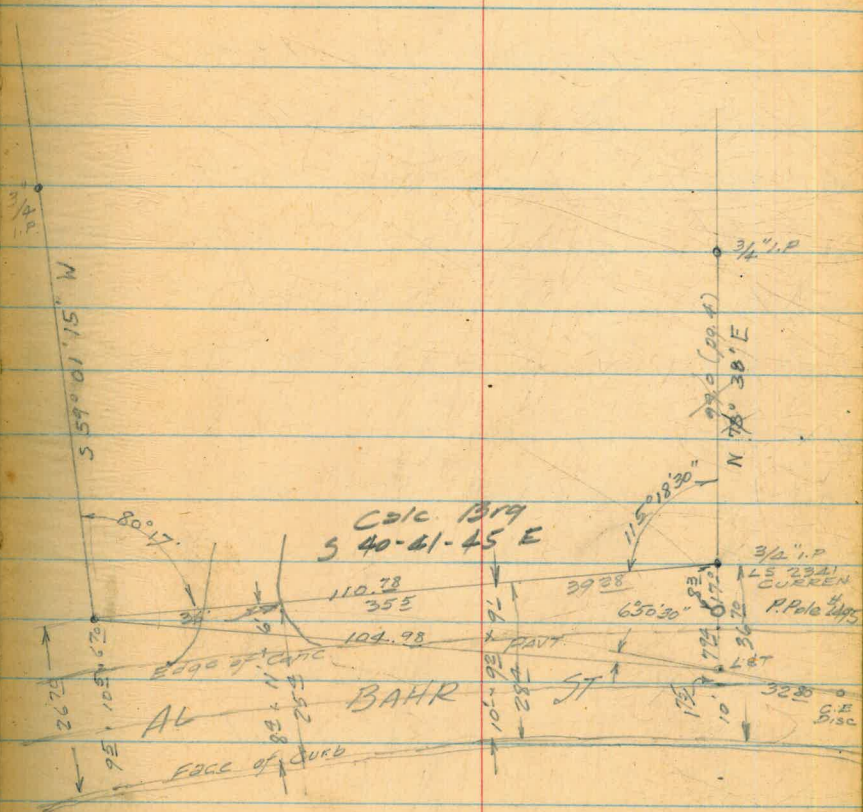
18' RT TOP CON DRIVE
1.5 RT
19.2 RT NLY EDGE CON DR.
17² RT NLY EDGE CON. DR.
3' RT TOP BRICK WALL
16¹ RT B.C DRIVEWAY (CON)
2⁴ RT B.C DRIVEWAY (CON)
2⁴ RT TOP BRICK WALL
E TOP BRICK WALL
12' RT. EDGE DRIVEWAY
9' RT. EDGE DRIVEWAY (BRICK POST 15)
17' LT. EDGE DRIVE (4.29 HIGH)
24' LT. EDGE DRIVE (12⁹ RT. 6.74)

This Bench moved See Page 18' (SEE BOTTOM CON. STEP LANDING PAGE 14)

DEC. 7 1955
 BRATTY
 KELLHOFFER

17.

EXCHANGE PLACE RES
 Additional TIES



Exchange Pl. Reservoir

STKs for Cone net wall North side

6.01	270.99	264.98	
1.63	259.61	13.01	257.98
0.26	247.08	12.79	246.82
4.17	246.90	4.35	242.73
11.47	251.41	6.96	239.94
2+49.7		12.16	239.25 244.00
2+40		10.60	240.81 245.95
2+20		8.49	242.92 249.97
2+00		7.40	244.01 253.98
1+80		6.48	244.93 258.00
1+60		5.2	246.2 258.0
1.81	247.38	5.84	245.57
1+11		2.01	245.37 259.0
1+00		2.25	245.13 259.0
0+90		2.46	244.92 259.0
0+78		2.56	244.82 259.0
0+70.7		2.69	244.69 252.5
TP	12.56	251.68	5.32 242.06
	12.57	266.74	0.45 254.17
		1.75	264.99 = 264.98

West
Williams
Kellhofer

18

915156

End of N Ely Ob Sec F-B 787-50

17'20" Sta 1+28" B" Line

TBM pointed on butt of step

F 4⁷⁵ end of wall (6)

F 5¹⁴

F 7⁰⁵

F 9⁹²

F 14⁹³ F 13⁰²

F 11⁸

F 13⁶³

F 13⁸¹

F 14⁰⁸

F 14¹⁸

F 7⁸¹

590
25.37
13.63

EXCHANGE PLACE RES
Elev. of Existing Rubble
PAVING of Driveway

9/18/56
Beatty
O'Brien

STATION	+ BS	H.I.	- F.S	Elev.
TBM	9.64	252.37		242.73
TBM	1.04	247.32	6.09	246.28
2+05				
2+10				
2+15				
2+20				
2+25				
2+30				
2+35				
2+40				
2+45				

Bottom step (see pg 18)

Plumb line of Well

Elev	Red	DIST
243.81	243.87	
3.51	3.45	
6	13	
on broken conc. rubble driveway paving.		
243.55	243.54	
3.77	3.78	
52	13	
243.19	243.18	
4.13	4.14	
52	11	
242.90	242.87	
4.22	4.25	
6	10	
242.69	242.65	
4.63	4.67	
52	10	
242.24	242.11	
5.08	5.21	
9	9	
241.56	241.48	
5.76	5.84	
28	9	
241.01	240.81	
6.21	6.51	
25	9	
240.15	240.10	
7.17	7.22	
24	7	
238.78	239.24	
8.24	8.28	
21		

EXCHANGE PLACE RES

Elev of Cone footing for Ret Wall

Note all Dist Taken from C'RW Line

4.64 250.92

246.28

0+70^z

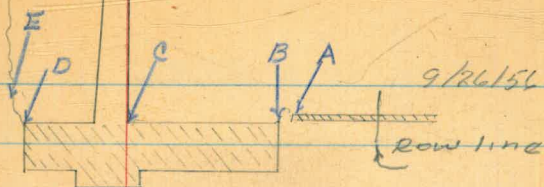
0+78

0+90

0+100

West
Williams
Paulson

20



7811

A $\frac{6.10}{47.20} \text{ ft}$
244.82

B $\frac{6.17}{47.20} \text{ ft}$
244.75

C $\frac{6.17}{5.20} \text{ ft}$
244.75

D 82 ft

E 82 ft

A $\frac{5.92}{5.92} \text{ ft}$
245.00

B $\frac{6.15}{5.92} \text{ ft}$
244.77

C $\frac{6.14}{11.25} \text{ ft}$
244.78

D 15.03 ft

E 18 ft

A $\frac{5.97}{43} \text{ ft}$
244.35

B $\frac{6.17}{43} \text{ ft}$
244.75

C $\frac{6.23}{95} \text{ ft}$
244.69

D 172 ft

E 153 ft

A $\frac{5.84}{30} \text{ ft}$
245.08

B $\frac{6.15}{30} \text{ ft}$
244.77

C $\frac{6.19}{89} \text{ ft}$
244.73

D 11.1 ft

E 14.6 ft

250.92

1+11

5.57 244.35

F 14⁶⁵

$$A \frac{5.6}{13} \text{ Dir-L} \\ 245.32$$

$$B \frac{6.13}{13} \\ 244.79$$

$$C \frac{6.14}{60} \text{ L} \\ 244.78$$

D 92 L

E 133 L

1+20

5.32 245.60 258

F 12⁴⁰

$$A \frac{5.3}{7.5} \text{ L Dir-L} \\ 245.62$$

$$B \frac{4.94}{13} \text{ L} \\ 245.98$$

$$C \frac{4.98}{60} \text{ L} \\ 245.94$$

D 92 L

E 132 L

2.25 248.53 4.64 246.28

1+30

2.43 246.10 258

F 11.90

$$A \frac{2.54}{13} \text{ L} \\ 245.99$$

$$B \frac{2.54}{13} \text{ L} \\ 245.99$$

$$C \frac{2.68}{60} \text{ L} \\ 245.85$$

D 92 L

E 12.5 L

248.53

1+40

2.47 246.06 258.0 F 11.94

$$A \begin{array}{r} 2.55 \\ 139.10 \\ \hline 245.88 \end{array}$$

$$B \begin{array}{r} 2.55 \\ 138.16 \\ \hline 245.98 \end{array}$$

$$C \begin{array}{r} 2.61 \\ 62.26 \\ \hline 245.92 \end{array}$$

D 92.26

E 122.26

1+50

$$A \begin{array}{r} 2.08 \\ 140 \\ \hline 246.95 \end{array}$$

$$B \begin{array}{r} 2.58 \\ 140 \\ \hline 245.94 \end{array}$$

$$C \begin{array}{r} 2.59 \\ 62.26 \\ \hline 245.94 \end{array}$$

D 90.26

E 112.26

1+60

$$A \begin{array}{r} 2.23 \\ 135.26 \\ \hline 246.30 \end{array}$$

$$B \begin{array}{r} 2.61 \\ 135 \\ \hline 245.92 \end{array}$$

$$C \begin{array}{r} 2.59 \\ 62.26 \\ \hline 245.94 \end{array}$$

D 92.26

E 112

1+70

$$A \begin{array}{r} 2.78 \\ 02.26 \\ \hline 245.75 \end{array}$$

$$B \begin{array}{r} 3.18 \\ 132.26 \\ \hline 245.35 \end{array}$$

$$C \begin{array}{r} 3.24 \\ 62.26 \\ \hline 245.29 \end{array}$$

D 8.95.26

E 8.95.26

248.53

1+80

$$\begin{array}{r} A \ 3.60 \\ 0.91 \text{ lb} \\ \hline 244.93 \end{array}$$

$$\begin{array}{r} B \ 3.83 \\ 0.91 \text{ lb} \\ \hline 244.70 \end{array}$$

$$\begin{array}{r} C \ 3.88 \\ 0.91 \text{ lb} \\ \hline 244.71 \end{array}$$

$$D \ 8.75 \text{ lb}$$

$$E \ 8.8 \text{ lb}$$

190

$$\begin{array}{r} A \ 4.19 \\ 1.73 \text{ lb} \\ \hline 244.34 \end{array}$$

$$\begin{array}{r} B \ 4.19 \\ 1.73 \text{ lb} \\ \hline 244.34 \end{array}$$

$$\begin{array}{r} C \ 4.26 \\ 0.62 \text{ lb} \\ \hline 244.27 \end{array}$$

$$D \ 9.35 \text{ lb}$$

$$E \ 9.40 \text{ lb}$$

2+00

$$\begin{array}{r} A \ 4.53 \\ 0.35 \text{ lb} \\ \hline 244.00 \end{array}$$

$$\begin{array}{r} B \ 4.52 \\ 2.13 \text{ lb} \\ \hline 244.01 \end{array}$$

$$\begin{array}{r} C \ 4.61 \\ 0.6 \text{ lb} \\ \hline 243.92 \end{array}$$

$$D \ 8.82 \text{ lb}$$

$$E \ 8.9 \text{ lb}$$

1.60 244.75 5.38 243.15

2+10

$$\begin{array}{r} A \ 1.20 \\ 0.23 \text{ lb} \\ \hline 247.33 \\ 243.55 \end{array}$$

$$\begin{array}{r} B \ 1.24 \\ 2.33 \text{ lb} \\ \hline 247.29 \\ 243.51 \end{array}$$

$$\begin{array}{r} C \ 1.27 \\ 0.2 \text{ lb} \\ \hline 247.26 \\ 243.48 \end{array}$$

$$D \ 8.6 \text{ lb}$$

$$E \ 8.6 \text{ lb}$$

244.75

2+20

$$\begin{array}{r} A \ 1.85 \\ 02 \text{ lb} \\ \hline 242.90 \end{array}$$

$$\begin{array}{r} B \ 1.74 \\ 2.95 \text{ lb} \\ \hline 243.01 \end{array}$$

$$\begin{array}{r} C \ 1.75 \\ 60 \text{ lb} \\ \hline 243.00 \end{array}$$

D 82 lb

F 83

2+30

$$\begin{array}{r} A \ 2.47 \\ 25 \text{ lb} \\ \hline 243.28 \end{array}$$

$$\begin{array}{r} B \ 2.47 \\ 25 \text{ lb} \\ \hline 243.28 \end{array}$$

$$\begin{array}{r} C \ 2.46 \\ 60 \text{ lb} \\ \hline 243.29 \end{array}$$

D 78

F 72

2+40

$$\begin{array}{r} A \ 3.87 \\ 22 \text{ lb} \\ \hline 240.88 \end{array}$$

$$\begin{array}{r} B \ 3.87 \\ 22 \text{ lb} \\ \hline 240.88 \end{array}$$

$$\begin{array}{r} C \ 3.83 \\ 60 \text{ lb} \\ \hline 240.92 \end{array}$$

D 82 lb

E 82 lb

2+49 3

$$\begin{array}{r} A \ 5.72 \\ 365 \text{ lb} \\ \hline 239.03 \end{array}$$

$$\begin{array}{r} B \ 5.72 \\ 365 \text{ lb} \\ \hline 239.03 \end{array}$$

$$\begin{array}{r} C \ 5.65 \\ 60 \text{ lb} \\ \hline 239.10 \end{array}$$

D 78 lb

E 84 lb

9.78 246.83 7.70 237.05

4.12 242.71 = 242.73

EXCHANGE PLACE RES.
 (LA JOLLA RES)
 Top of Wall & Top of Ftg.
 (AS BUILT.)

10/31/56
 BERTY
 MARTELL

BM	9.67	252.40	242.73
2+49.2	Top of Wall	8.38	244.02
	Top of Ftg.	13.37	239.03
2+28	Top of Wall	4.04	248.36
	Top of Ftg.	9.89	242.51
IP	11.66	263.73	0.33 252.07
2+00	Top of Wall	9.86	253.87
	Top of Ftg.	19.86	243.87
1+80	Top of wall	5.77	257.96
	Top of Ftg.	19.00	244.73
1+20	Top of Wall	5.77	257.96
	Top of Ftg.	17.82	245.91
1+11	Top of Wall	4.77	258.96
	Top of Ftg.	18.97	244.76
0+78	Top of Wall	4.70	259.03
	Top of Ftg.	18.96	244.77
0+70.2	Top of Wall	11.20	252.53
	Top of Ftg.	18.95	244.78
IP CK BM	6.46	269.53	0.66 263.07
			2.55 264.98 = 264.98

NOTE 1+60
 opposite page

2170 Horiz. Dist.

2800 " "

2000 " "

6000 " " 1+60

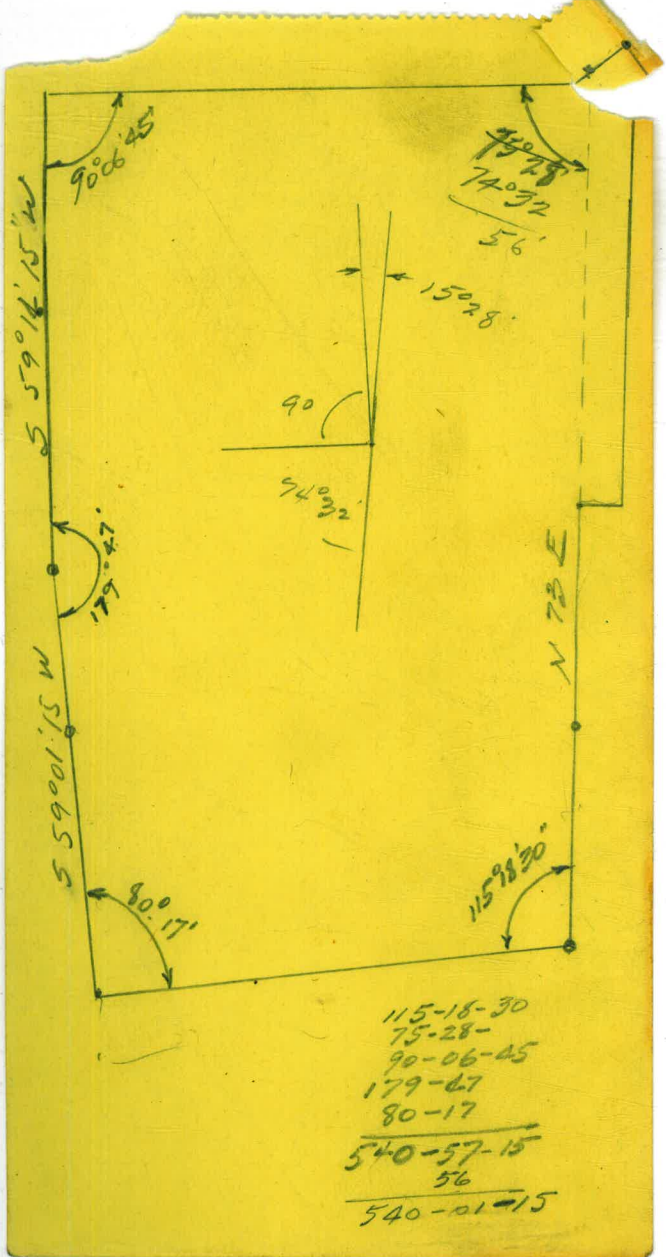
900 " "

3360 " "

1030 " "

Top of Wall 5.77 257.96

Top of Ftg. 17.96 245.77



2.60 7.57

294.84

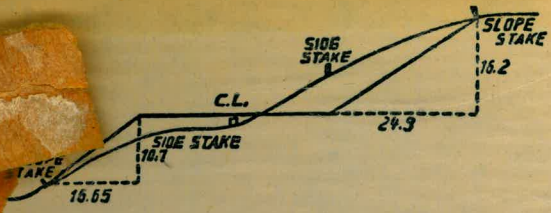
5.59

289.25

293.14

289.25

03.89

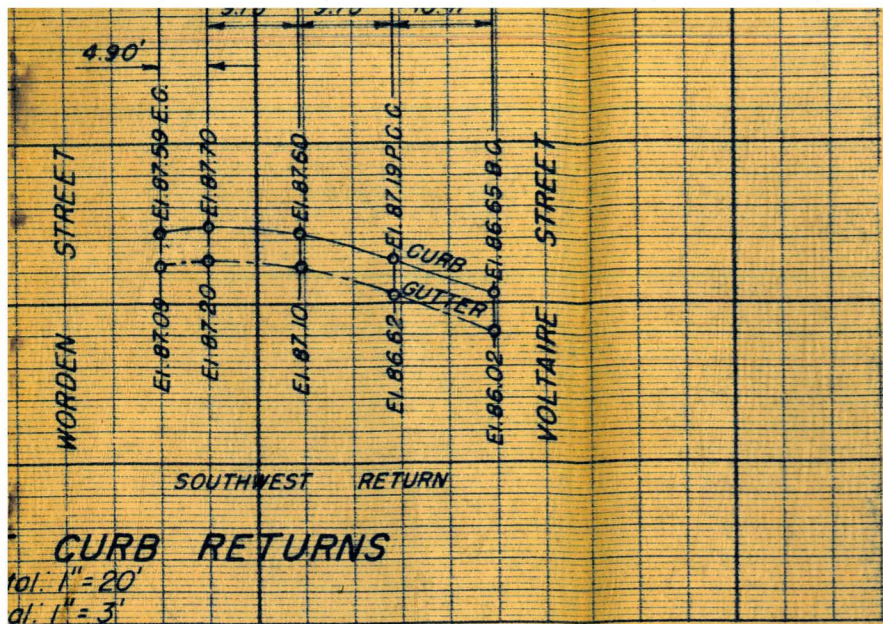


DISTANCES FROM SIDE STAKES FOR CROSS-SECTIONING.

SLOPE 1 1/2 TO 1. ROADWAY OF ANY WIDTH.

	0	.1	.2	.3	.4	.5	.6	.7	.8	.9	
0	0.00	0.15	0.30	0.45	0.60	0.75	0.90	1.05	1.20	1.35	0
1	1.50	1.65	1.80	1.95	2.10	2.25	2.40	2.55	2.70	2.85	1
2	3.00	3.15	3.30	3.45	3.60	3.75	3.90	4.05	4.20	4.35	2
3	4.50	4.65	4.80	4.95	5.10	5.25	5.40	5.55	5.70	5.85	3
4	6.00	6.15	6.30	6.45	6.60	6.75	6.90	7.05	7.20	7.35	4
5	7.50	7.65	7.80	7.95	8.10	8.25	8.40	8.55	8.70	8.85	5
6	9.00	9.15	9.30	9.45	9.60	9.75	9.90	10.05	10.20	10.35	6
7	10.50	10.65	10.80	10.95	11.10	11.25	11.40	11.55	11.70	11.85	7
8	12.00	12.15	12.30	12.45	12.60	12.75	12.90	13.05	13.20	13.35	8
9	13.50	13.65	13.80	13.95	14.10	14.25	14.40	14.55	14.70	14.85	9
10	15.00	15.15	15.30	15.45	15.60	15.75	15.90	16.05	16.20	16.35	10
11	16.50	16.65	16.80	16.95	17.10	17.25	17.40	17.55	17.70	17.85	11
12	18.00	18.15	18.30	18.45	18.60	18.75	18.90	19.05	19.20	19.35	12
13	19.50	19.65	19.80	19.95	20.10	20.25	20.40	20.55	20.70	20.85	13
14	21.00	21.15	21.30	21.45	21.60	21.75	21.90	22.05	22.20	22.35	14
15	22.50	22.65	22.80	22.95	23.10	23.25	23.40	23.55	23.70	23.85	15
16	24.00	24.15	24.30	24.45	24.60	24.75	24.90	25.05	25.20	25.35	16
17	25.50	25.65	25.80	25.95	26.10	26.25	26.40	26.55	26.70	26.85	17
18	27.00	27.15	27.30	27.45	27.60	27.75	27.90	28.05	28.20	28.35	18
19	28.50	28.65	28.80	28.95	29.10	29.25	29.40	29.55	29.70	29.85	19
20	30.00	30.15	30.30	30.45	30.60	30.75	30.90	31.05	31.20	31.35	20
21	31.50	31.65	31.80	31.95	32.10	32.25	32.40	32.55	32.70	32.85	21
22	33.00	33.15	33.30	33.45	33.60	33.75	33.90	34.05	34.20	34.35	22
23	34.50	34.65	34.80	34.95	35.10	35.25	35.40	35.55	35.70	35.85	23
24	36.00	36.15	36.30	36.45	36.60	36.75	36.90	37.05	37.20	37.35	24
25	37.50	37.65	37.80	37.95	38.10	38.25	38.40	38.55	38.70	38.85	25
26	39.00	39.15	39.30	39.45	39.60	39.75	39.90	40.05	40.20	40.35	26
27	40.50	40.65	40.80	40.95	41.10	41.25	41.40	41.55	41.70	41.85	27
28	42.00	42.15	42.30	42.45	42.60	42.75	42.90	43.05	43.20	43.35	28
29	43.50	43.65	43.80	43.95	44.10	44.25	44.40	44.55	44.70	44.85	29
30	45.00	45.15	45.30	45.45	45.60	45.75	45.90	46.05	46.20	46.35	30
31	46.50	46.65	46.80	46.95	47.10	47.25	47.40	47.55	47.70	47.85	31
32	48.00	48.15	48.30	48.45	48.60	48.75	48.90	49.05	49.20	49.35	32
33	49.50	49.65	49.80	49.95	50.10	50.25	50.40	50.55	50.70	50.85	33
34	51.00	51.15	51.30	51.45	51.60	51.75	51.90	52.05	52.20	52.35	34
35	52.50	52.65	52.80	52.95	53.10	53.25	53.40	53.55	53.70	53.85	35
36	54.00	54.15	54.30	54.45	54.60	54.75	54.90	55.05	55.20	55.35	36
37	55.50	55.65	55.80	55.95	56.10	56.25	56.40	56.55	56.70	56.85	37
38	57.00	57.15	57.30	57.45	57.60	57.75	57.90	58.05	58.20	58.35	38
39	58.50	58.65	58.80	58.95	59.10	59.25	59.40	59.55	59.70	59.85	39
40	60.00	60.15	60.30	60.45	60.60	60.75	60.90	61.05	61.20	61.35	40
41	61.50	61.65	61.80	61.95	62.10	62.25	62.40	62.55	62.70	62.85	41
42	63.00	63.15	63.30	63.45	63.60	63.75	63.90	64.05	64.20	64.35	42
43	64.50	64.65	64.80	64.95	65.10	65.25	65.40	65.55	65.70	65.85	43
44	66.00	66.15	66.30	66.45	66.60	66.75	66.90	67.05	67.20	67.35	44
45	67.50	67.65	67.80	67.95	68.10	68.25	68.40	68.55	68.70	68.85	45
46	69.00	69.15	69.30	69.45	69.60	69.75	69.90	70.05	70.20	70.35	46
47	70.50	70.65	70.80	70.95	71.10	71.25	71.40	71.55	71.70	71.85	47
48	72.00	72.15	72.30	72.45	72.60	72.75	72.90	73.05	73.20	73.35	48
49	73.50	73.65	73.80	73.95	74.10	74.25	74.40	74.55	74.70	74.85	49
50	75.00	75.15	75.30	75.45	75.60	75.75	75.90	76.05	76.20	76.35	50

THE NATIONAL BLANK BOOK COMPANY
 HOLYOKE MASSACHUSETTS
 NEW YORK CHICAGO BOSTON SAN FRANCISCO

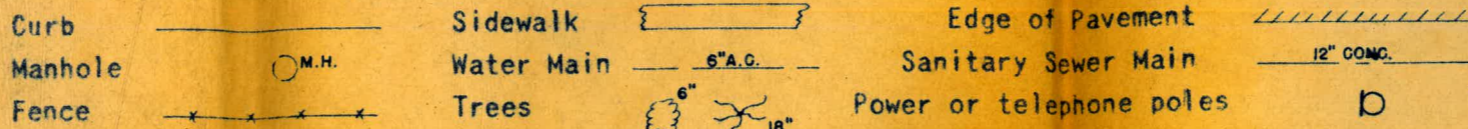


The preparation of subgrade and paving of the portions of the streets shown shaded thus:

The construction of Type G curb as shown thus:

The construction of a concrete drain slab as shown on the plans.

EXISTING WORK



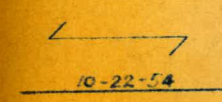
STANDARD DRAWINGS

9-E-B

LEGEND

Property ownerships

Property divisions by deed



Standard Specifications of the City of San Diego filed July 7, 1954

NOTE: 6" A.C. water main in Worden Street to be constructed by Water Department prior to award of this contract.

PLAT NO. 2780

SHEET 1		CITY OF SAN DIEGO ENGINEERING DEPARTMENT		2 SHEETS	
Plans for the improvement of WORDEN STREET between the southwesterly line of Voltaire Street and the southwesterly line of Tennyson Street.					
APPROVED		<i>a.k. Foyz</i> CITY ENGINEER		DATE 6/22/55	
DRAWN BY AKIN 5-20-55		CHANGED		DATE	
TRACED BY		O.K.		DRAWING NUMBER	
CHECKED BY 1818				12371-L	
FIELD BOOKS 1818					

WATER DEPARTMENT JWC

SEWER DEPARTMENT M. J. Murray 6-15-55

DRAINAGE R. F. Kunkin 6-16-55

FIELD CHECK E. G. Gable 6-16-55

OFFICE CHECK J. H. Gable 6/22/55

PLANNING COMMISSION J. H. Gable 6/22/55

GRADES J. H. Gable 6-15-55

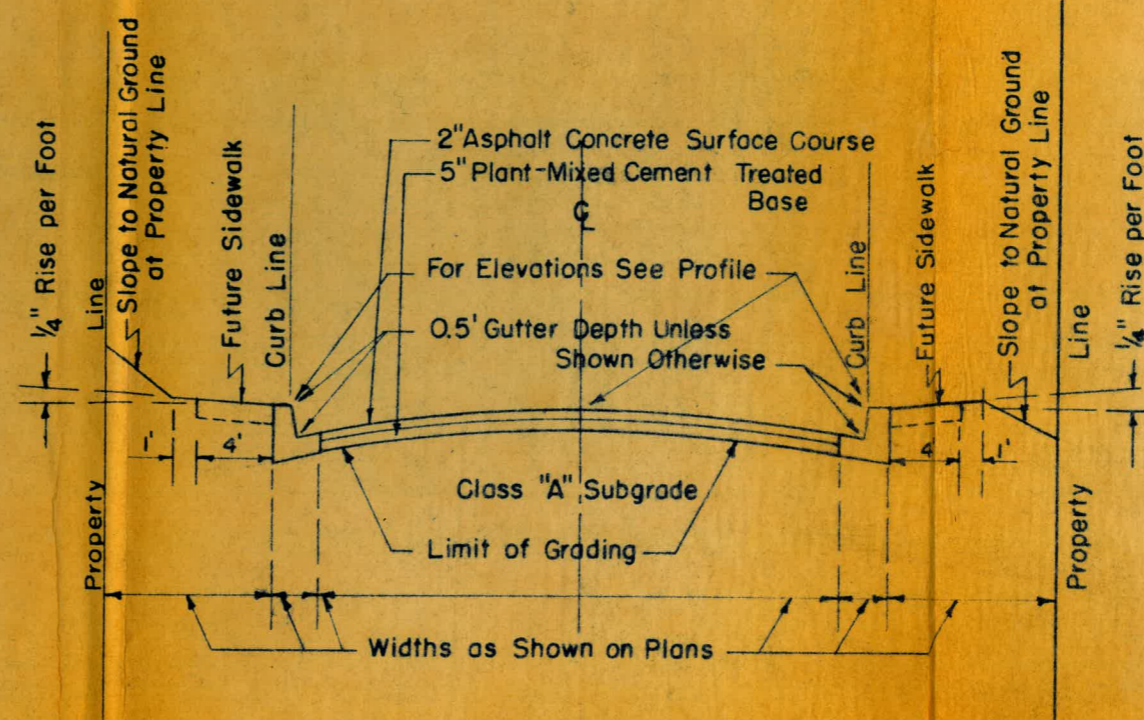
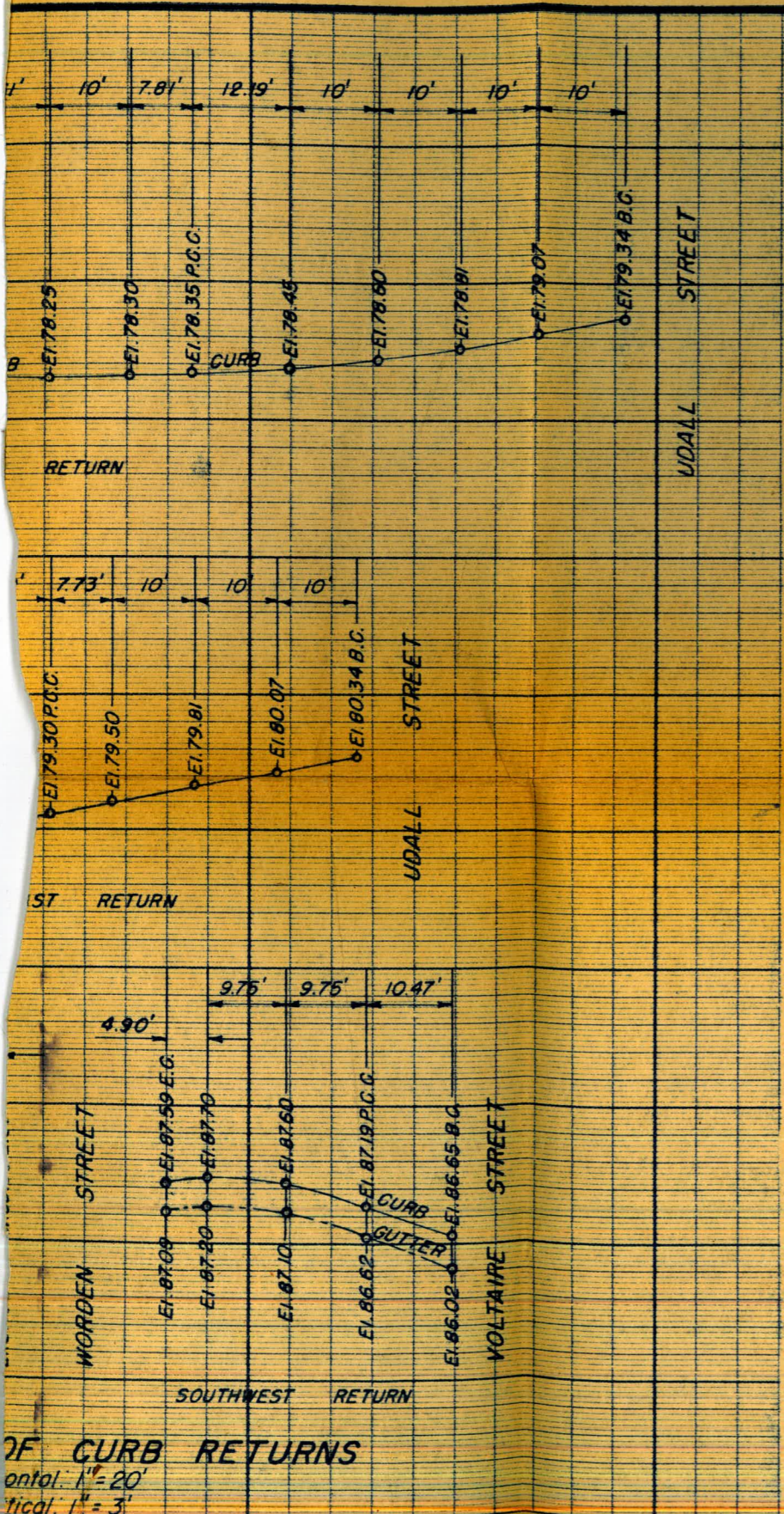
SUPERVISOR R. F. Kunkin 6-16-55

Highway Engr. R. J. Kunkin 6/19/55

CONSTRUCTION		RECORD		W. O. No. 31626	
CONTRACTOR		INSPECTOR			
DATE STARTED		REVISIONS		DATE	BY
DATE COMPLETED					

Res
Evans


PRINTED IN U.S.A.
 PLAN PROJE B'ALE B
 CHARLES BRUNING COMPANY





TYPICAL CROSS SECTION OF STREET
 No Scale

WORK TO BE DONE

The improvement consists of the following work to be done according to these plans and the specifications hereto attached:


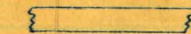

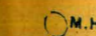
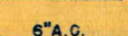
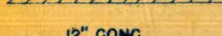

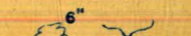
The grading of the portions of the streets shown hatched thus: 

The preparation of subgrade and paving of the portions of the streets shown shaded thus: 

The construction of Type G curb as shown thus: 

The construction of a concrete drain slab as shown on the plans.

EXISTING WORK

Curb		Sidewalk		Edge of Pavement	
Manhole		Water Main		Sanitary Sewer Main	
Fence		Trees		Power or telephone poles	

OF CURB RETURNS
 ontal. 1" = 20'
 tical. 1" = 3'

59.62
80
139.62
130.33
259.95

130.33
72
1.05

37 2/3
120

139.62
131.05
260.67

40.1 @ 30° 40'

1699
121
5.894

11.8
5.1
9.8



CITY RESERVOIR
EXCHANGE PLACE

TENNISON

9008.15
59.14.15
30° 54'

58.55
20.1
50

70.53
8.17

28.9
20.1
9

25.5
17.3

W. Prep Line Exchange P.

18.81
15.81

15.1
13.1
15.1

49.60
10.0
10.0

11.2
11.2

11.2
11.2

11.2
11.2

11.2
11.2

11.2
11.2

11.2
11.2

11.2
11.2

11.2
11.2

11.2
11.2

11.2
11.2

11.2
11.2

11.2
11.2

11.2
11.2

11.2
11.2

11.2
11.2

11.2
11.2

11.2
11.2

11.2
11.2

11.2
11.2

11.2
11.2

11.2
11.2

11.2
11.2

11.2
11.2

11.2
11.2

11.2
11.2

11.2
11.2

11.2
11.2

11.2
11.2

11.2
11.2

11.2
11.2

11.2
11.2

11.2
11.2

11.2
11.2

11.2
11.2

11.2
11.2

11.2
11.2

11.2
11.2

11.2
11.2

11.2
11.2

11.2
11.2

11.2
11.2

11.2
11.2

11.2
11.2

11.2
11.2

11.2
11.2

11.2
11.2

11.2
11.2

11.2
11.2

11.2
11.2

11.2
11.2

11.2
11.2

11.2
11.2

11.2
11.2

11.2
11.2

11.2
11.2

11.2
11.2

11.2
11.2

11.2
11.2

11.2
11.2

11.2
11.2

11.2
11.2

11.2
11.2

11.2
11.2

11.2
11.2

11.2
11.2

11.2
11.2

11.2
11.2

11.2
11.2

11.2
11.2

11.2
11.2

11.2
11.2

11.2
11.2

11.2
11.2

11.2
11.2

11.2
11.2

11.2
11.2

11.2
11.2

11.2
11.2

11.2
11.2

11.2
11.2

11.2
11.2

11.2
11.2

11.2
11.2

11.2
11.2

11.2
11.2

11.2
11.2

11.2
11.2

11.2
11.2

11.2
11.2

11.2
11.2

11.2
11.2

11.2
11.2

11.2
11.2

11.2
11.2

11.2
11.2

11.2
11.2

11.2
11.2

11.2
11.2

11.2
11.2

11.2
11.2

11.2
11.2

11.2
11.2

11.2
11.2

11.2
11.2

11.2
11.2

11.2
11.2

11.2
11.2

11.2
11.2

11.2
11.2

11.2
11.2

11.2
11.2

11.2
11.2

11.2
11.2

11.2
11.2

11.2
11.2

11.2
11.2

11.2
11.2

11.2
11.2

11.2
11.2

11.2
11.2

11.2
11.2

11.2
11.2

11.2
11.2

11.2
11.2

11.2
11.2

11.2
11.2

11.2
11.2

11.2
11.2

11.2
11.2

11.2
11.2

11.2
11.2

11.2
11.2

11.2
11.2

11.2
11.2

11.2
11.2

11.2
11.2

11.2
11.2

11.2
11.2

11.2
11.2

11.2
11.2

11.2
11.2

11.2
11.2

11.2
11.2

11.2
11.2

11.2
11.2

11.2
11.2

11.2
11.2

11.2
11.2

11.2
11.2

11.2
11.2

11.2
11.2

11.2
11.2

11.2
11.2

11.2
11.2

11.2
11.2

11.2
11.2

11.2
11.2

11.2
11.2

11.2
11.2

11.2
11.2

11.2
11.2

11.2
11.2

11.2
11.2

11.2
11.2

11.2
11.2

11.2
11.2

11.2
11.2

11.2
11.2

11.2
11.2

11.2
11.2

11.2
11.2

11.2
11.2

11.2
11.2

11.2
11.2

11.2
11.2

11.2
11.2

11.2
11.2

11.2
11.2

11.2
11.2

11.2
11.2

11.2
11.2

11.2
11.2

11.2
11.2

247.96
 11.22
 236.74
 + 1.36
 238.10
 - 12.91
 225.19
 + 2.70
 227.89
 13.12
 240.71
 + 2.19
 242.90

269.14
 - 15.62
 253.52
 85.51
 09.68
 15.38
 101.89
 264.98
 41.8
 223.18

139.62
 121.05
 260.67

