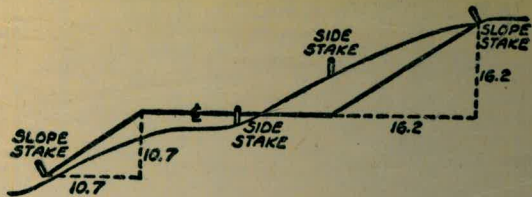


W 932





DISTANCES FROM SIDE STAKES FOR CROSS-SECTIONING  
SLOPE 1 TO 1. ROADWAY OF ANY WIDTH

	0	.1	.2	.3	.4	.5	.6	.7	.8	.9	
0	0.00	0.10	0.20	0.30	0.40	0.50	0.60	0.70	0.80	0.90	0
1	1.00	1.10	1.20	1.30	1.40	1.50	1.60	1.70	1.80	1.90	1
2	2.00	2.10	2.20	2.30	2.40	2.50	2.60	2.70	2.80	2.90	2
3	3.00	3.10	3.20	3.30	3.40	3.50	3.60	3.70	3.80	3.90	3
4	4.00	4.10	4.20	4.30	4.40	4.50	4.60	4.70	4.80	4.90	4
5	5.00	5.10	5.20	5.30	5.40	5.50	5.60	5.70	5.80	5.90	5
6	6.00	6.10	6.20	6.30	6.40	6.50	6.60	6.70	6.80	6.90	6
7	7.00	7.10	7.20	7.30	7.40	7.50	7.60	7.70	7.80	7.90	7
8	8.00	8.10	8.20	8.30	8.40	8.50	8.60	8.70	8.80	8.90	8
9	9.00	9.10	9.20	9.30	9.40	9.50	9.60	9.70	9.80	9.90	9
10	10.00	10.10	10.20	10.30	10.40	10.50	10.60	10.70	10.80	10.90	10
11	11.00	11.10	11.20	11.30	11.40	11.50	11.60	11.70	11.80	11.90	11
12	12.00	12.10	12.20	12.30	12.40	12.50	12.60	12.70	12.80	12.90	12
13	13.00	13.10	13.20	13.30	13.40	13.50	13.60	13.70	13.80	13.90	13
14	14.00	14.10	14.20	14.30	14.40	14.50	14.60	14.70	14.80	14.90	14
15	15.00	15.10	15.20	15.30	15.40	15.50	15.60	15.70	15.80	15.90	15
16	16.00	16.10	16.20	16.30	16.40	16.50	16.60	16.70	16.80	16.90	16
17	17.00	17.10	17.20	17.30	17.40	17.50	17.60	17.70	17.80	17.90	17
18	18.00	18.10	18.20	18.30	18.40	18.50	18.60	18.70	18.80	18.90	18
19	19.00	19.10	19.20	19.30	19.40	19.50	19.60	19.70	19.80	19.90	19
20	20.00	20.10	20.20	20.30	20.40	20.50	20.60	20.70	20.80	20.90	20
21	21.00	21.10	21.20	21.30	21.40	21.50	21.60	21.70	21.80	21.90	21
22	22.00	22.10	22.20	22.30	22.40	22.50	22.60	22.70	22.80	22.90	22
23	23.00	23.10	23.20	23.30	23.40	23.50	23.60	23.70	23.80	23.90	23
24	24.00	24.10	24.20	24.30	24.40	24.50	24.60	24.70	24.80	24.90	24
25	25.00	25.10	25.20	25.30	25.40	25.50	25.60	25.70	25.80	25.90	25
26	26.00	26.10	26.20	26.30	26.40	26.50	26.60	26.70	26.80	26.90	26
27	27.00	27.10	27.20	27.30	27.40	27.50	27.60	27.70	27.80	27.90	27
28	28.00	28.10	28.20	28.30	28.40	28.50	28.60	28.70	28.80	28.90	28
29	29.00	29.10	29.20	29.30	29.40	29.50	29.60	29.70	29.80	29.90	29
30	30.00	30.10	30.20	30.30	30.40	30.50	30.60	30.70	30.80	30.90	30
31	31.00	31.10	31.20	31.30	31.40	31.50	31.60	31.70	31.80	31.90	31
32	32.00	32.10	32.20	32.30	32.40	32.50	32.60	32.70	32.80	32.90	32
33	33.00	33.10	33.20	33.30	33.40	33.50	33.60	33.70	33.80	33.90	33
34	34.00	34.10	34.20	34.30	34.40	34.50	34.60	34.70	34.80	34.90	34
35	35.00	35.10	35.20	35.30	35.40	35.50	35.60	35.70	35.80	35.90	35
36	36.00	36.10	36.20	36.30	36.40	36.50	36.60	36.70	36.80	36.90	36
37	37.00	37.10	37.20	37.30	37.40	37.50	37.60	37.70	37.80	37.90	37
38	38.00	38.10	38.20	38.30	38.40	38.50	38.60	38.70	38.80	38.90	38
39	39.00	39.10	39.20	39.30	39.40	39.50	39.60	39.70	39.80	39.90	39
40	40.00	40.10	40.20	40.30	40.40	40.50	40.60	40.70	40.80	40.90	40
41	41.00	41.10	41.20	41.30	41.40	41.50	41.60	41.70	41.80	41.90	41
42	42.00	42.10	42.20	42.30	42.40	42.50	42.60	42.70	42.80	42.90	42
43	43.00	43.10	43.20	43.30	43.40	43.50	43.60	43.70	43.80	43.90	43
44	44.00	44.10	44.20	44.30	44.40	44.50	44.60	44.70	44.80	44.90	44
45	45.00	45.10	45.20	45.30	45.40	45.50	45.60	45.70	45.80	45.90	45
46	46.00	46.10	46.20	46.30	46.40	46.50	46.60	46.70	46.80	46.90	46
47	47.00	47.10	47.20	47.30	47.40	47.50	47.60	47.70	47.80	47.90	47
48	48.00	48.10	48.20	48.30	48.40	48.50	48.60	48.70	48.80	48.90	48
49	49.00	49.10	49.20	49.30	49.40	49.50	49.60	49.70	49.80	49.90	49
50	50.00	50.10	50.20	50.30	50.40	50.50	50.60	50.70	50.80	50.90	50

The slope of slope stake from side or shoulder stake for any width roadway, slope 1 to 1. If ground is nearly level, the cut or fill at side stake is located by the double entry method in left column and top row. The number in body of table in same row and column gives distance from side stake to slope stake. If ground is not level estimate the difference in elevation between the side stake and slope stake, lower target by this amount if cut, elevate if fill. Add this amount to cut or fill and find distance in table. Set up rod at this point, and line of sight should cut target. If it does not make the slight adjustment necessary.



TABLE XIII—CORRECTIONS FOR TANGENTS AND EXTERNALS

These corrections are to be added to the approximate values, found by dividing the tangent, or external, for a 1° curve (Table VIII) by the degree of curve, in order to obtain the true tangents, or externals. Intermediate values may be obtained by interpolation.

FOR TANGENTS ADD

Central Angle	DEGREE OF CURVE													
	5°	10°	15°	20°	25°	30°	35°	40°	45°	50°	55°	60°	65°	70°
10°	.03	.06	.09	.13	.16	.19	.22	.25	.28	.31	.34	.38	.42	.46
15°	.04	.10	.14	.19	.24	.29	.34	.39	.45	.51	.53	.58	.63	.68
20°	.06	.13	.19	.26	.32	.39	.45	.51	.58	.65	.72	.79	.84	.90
25°	.08	.16	.24	.33	.40	.49	.58	.67	.75	.83	.90	.99	1.06	1.14
30°	.10	.19	.29	.39	.49	.59	.69	.79	.89	.99	1.09	1.20	1.29	1.39
35°	.11	.22	.34	.47	.58	.69	.79	.81	.92	1.04	1.29	1.42	1.54	1.66
40°	.13	.26	.40	.53	.67	.80	.93	1.06	1.20	1.34	1.49	1.64	1.79	1.94
45°	.15	.30	.44	.60	.76	.91	1.06	1.21	1.37	1.52	1.70	1.87	2.04	2.21
50°	.17	.34	.51	.68	.85	1.02	1.19	1.36	1.54	1.72	1.91	2.10	2.29	2.48
55°	.19	.38	.57	.76	.95	1.14	1.32	1.52	1.72	1.92	2.14	2.35	2.56	2.77
60°	.21	.42	.63	.84	1.05	1.27	1.49	1.71	1.94	2.17	2.38	2.60	2.83	3.07
65°	.23	.46	.69	.93	1.16	1.40	1.64	1.88	2.13	2.38	2.63	2.88	3.13	3.39
70°	.25	.51	.76	1.02	1.28	1.54	1.80	2.06	2.33	2.60	2.88	3.16	3.44	3.72
75°	.27	.56	.83	1.12	1.40	1.69	1.98	2.27	2.57	2.87	3.16	3.47	3.78	4.09
80°	.30	.61	.91	1.22	1.53	1.84	2.15	2.46	2.78	3.10	3.44	3.78	4.12	4.46
85°	.33	.66	1.00	1.33	1.68	2.02	2.36	2.70	3.05	3.40	3.77	4.14	4.55	4.89
90°	.36	.72	1.09	1.45	1.83	2.20	2.57	2.94	3.32	3.70	4.10	4.50	4.91	5.32
95°	.39	.79	1.19	1.55	2.00	2.40	2.80	3.20	3.61	4.02	4.40	4.98	5.38	5.83
100°	.43	.86	1.30	1.74	2.18	2.62	3.06	3.50	3.95	4.40	4.88	5.37	5.85	6.34
110°	.51	1.03	1.56	2.08	2.61	3.14	3.67	4.21	4.76	5.31	5.86	6.43	7.01	7.60
120°	.62	1.25	1.93	2.52	3.16	3.81	4.45	5.11	5.77	6.44	7.12	7.80	8.50	9.22

FOR EXTERNALS ADD

Central Angle	DEGREE OF CURVE													
	5°	10°	15°	20°	25°	30°	35°	40°	45°	50°	55°	60°	65°	70°
10°	.001	.003	.004	.006	.007	.008	.009	.011	.012	.014	.015	.017	.018	.020
15°	.003	.007	.010	.014	.018	.023	.027	.029	.032	.035	.039	.043	.047	.051
20°	.006	.011	.017	.022	.028	.034	.038	.045	.051	.057	.063	.070	.076	.083
25°	.009	.018	.027	.036	.046	.056	.065	.074	.083	.093	.106	.120	.127	.135
30°	.013	.025	.038	.051	.065	.078	.090	.103	.116	.129	.149	.170	.179	.188
35°	.018	.035	.054	.072	.086	.109	.131	.153	.175	.197	.213	.230	.247	.264
40°	.023	.046	.070	.093	.117	.141	.172	.203	.234	.265	.277	.290	.315	.341
45°	.030	.060	.093	.119	.153	.184	.216	.254	.289	.325	.351	.378	.411	.445
50°	.037	.075	.116	.151	.189	.227	.266	.305	.345	.384	.425	.467	.508	.550
55°	.046	.093	.142	.188	.236	.283	.332	.381	.420	.479	.530	.582	.641	.700
60°	.056	.112	.168	.225	.283	.340	.398	.457	.516	.575	.636	.697	.774	.851
65°	.067	.135	.204	.273	.343	.412	.483	.554	.625	.697	.771	.845	.922	1.01
70°	.080	.159	.240	.321	.403	.485	.568	.652	.735	.819	.906	.994	1.08	1.17
75°	.095	.182	.286	.383	.480	.578	.678	.777	.877	.977	1.07	1.18	1.29	1.39
80°	.110	.220	.332	.445	.558	.671	.787	.903	1.02	1.13	1.25	1.38	1.50	1.62
85°	.128	.259	.391	.524	.657	.790	.926	1.06	1.20	1.34	1.47	1.62	1.76	1.91
90°	.149	.299	.450	.603	.756	.910	1.07	1.22	1.38	1.54	1.70	1.87	2.03	2.20
95°	.174	.350	.522	.706	.885	1.06	1.25	1.43	1.62	1.80	1.99	2.18	2.38	2.58
100°	.200	.401	.604	.809	1.01	1.22	1.43	1.64	1.85	2.06	2.28	2.50	2.73	2.96
110°	.268	.536	.806	1.08	1.35	1.63	1.91	2.20	2.48	2.76	3.05	3.35	3.66	3.96
120°	.360	.721	1.08	1.45	1.82	2.19	2.57	2.95	3.33	3.72	4.11	4.50	4.91	5.32

INDEX

TRIANGULATION OTAY LAKES

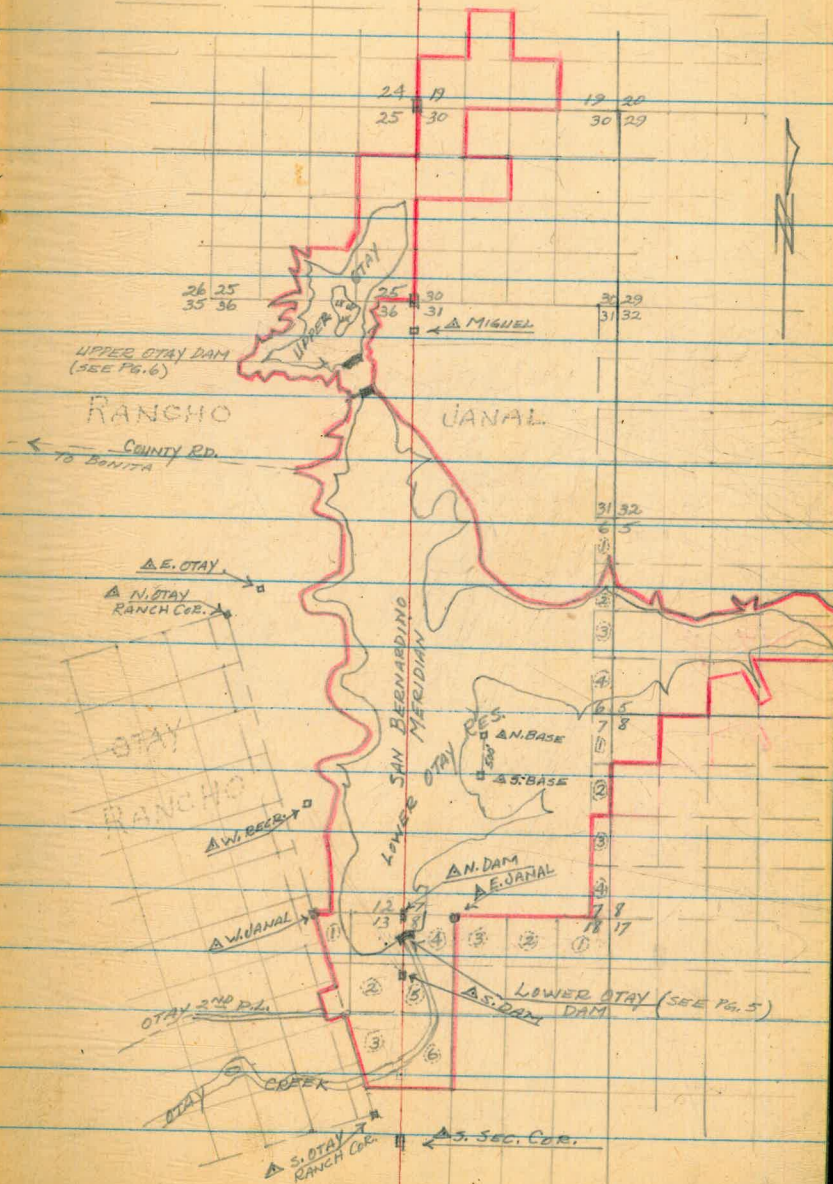
1-



3/29/56  
SHOESY  
MARTELL  
KEMP  
SMITH

NOTE: RED LINE REPRESENTS  
CITY PROP. —

△ MIGUEL ETC. MEANS  
TRIANGULATION STATION





4/3/56

SHIREY  
MARTELL  
SMITH

RANCHO JANAL

2

92+84 FENCE COR.  
1056.35

FD. 3X3 POST MK'D  
92+68.96

△ E. OTAY

JR. IN N.  
ONE COR. ON E,  
1C IN W.



FD. 3X3 POST MK'D JR. ON E.  
69+50.38 058 " S.  
= " W.

OTAY

FD. 3X3 POST MK'D  
56+31.25

JR ON N.  
058 " E.  
2E " S.  
1E " W.

FD. 1/2" D STEEL PIN  
54+42.81 155.0 FENCE

RANCHO

FD. 1/2" D STEEL PIN & LATH  
44+77.81 02 E. OF FENCE

△ W. RECREATION

8003.00 REF.  
8268.96 MARKS

FD. MD. OF STONE  
23+33 ON FENCE LINE

FENCE

3449.23  
FD. 3X3 POST MK'D 058 ONE EAST  
EB " N.  
3E " W.  
4E " S.

RANCHO JANAL  
COR. #2

FD. CONC. MD.  
& BURNED  
POST.

12. 7  
13. 18

SAN BERNARDINO MERIDIAN



4/10/5  
SHOREY  
MARBELL  
KEMP  
SMITH

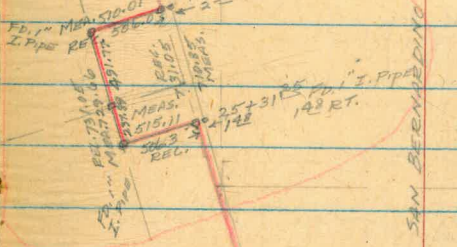
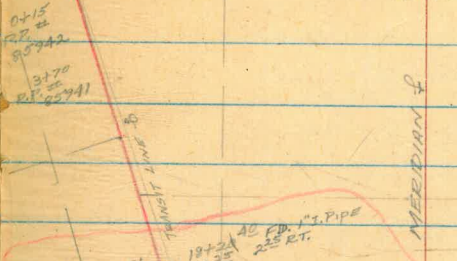
RANCHO JANAL

0+00 - JANAL RANCH COR. #2

SIGHTED FENCE LINE NORTH; PRODUCED  
THIS LINE SOUTH TO STA. 15+20<sup>40</sup> -  
ANGLE PT. AT STA. 18+20<sup>40</sup> 0°05' RT. TO  
SOUTH OTAY RANCH COR.

OTAY  
RANCH

FD CONC. MD. & BURNED POST  
JANAL RANCH COR. #2  
0+00 12 7  
13 18



SEE DETAIL ON PAGE 4

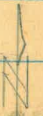
WELL DEFINED  
WELL COR. 3' 10" RADIUS  
POST WAVED TO FENCE  
POST MD. 0 SE COR  
COR. MD. SE

FD. OLD MD. OF ROCK  
STONE 10' X 8" X 18"  
SEC. COR

FD. EVIDENCE  
OF MD. STONE  
8' X 12" X 20"

BRID WIRE ON G.P.D. &  
EVIDENCE OF OLD FENCE

SAN BERNARDINO MERIDIAN





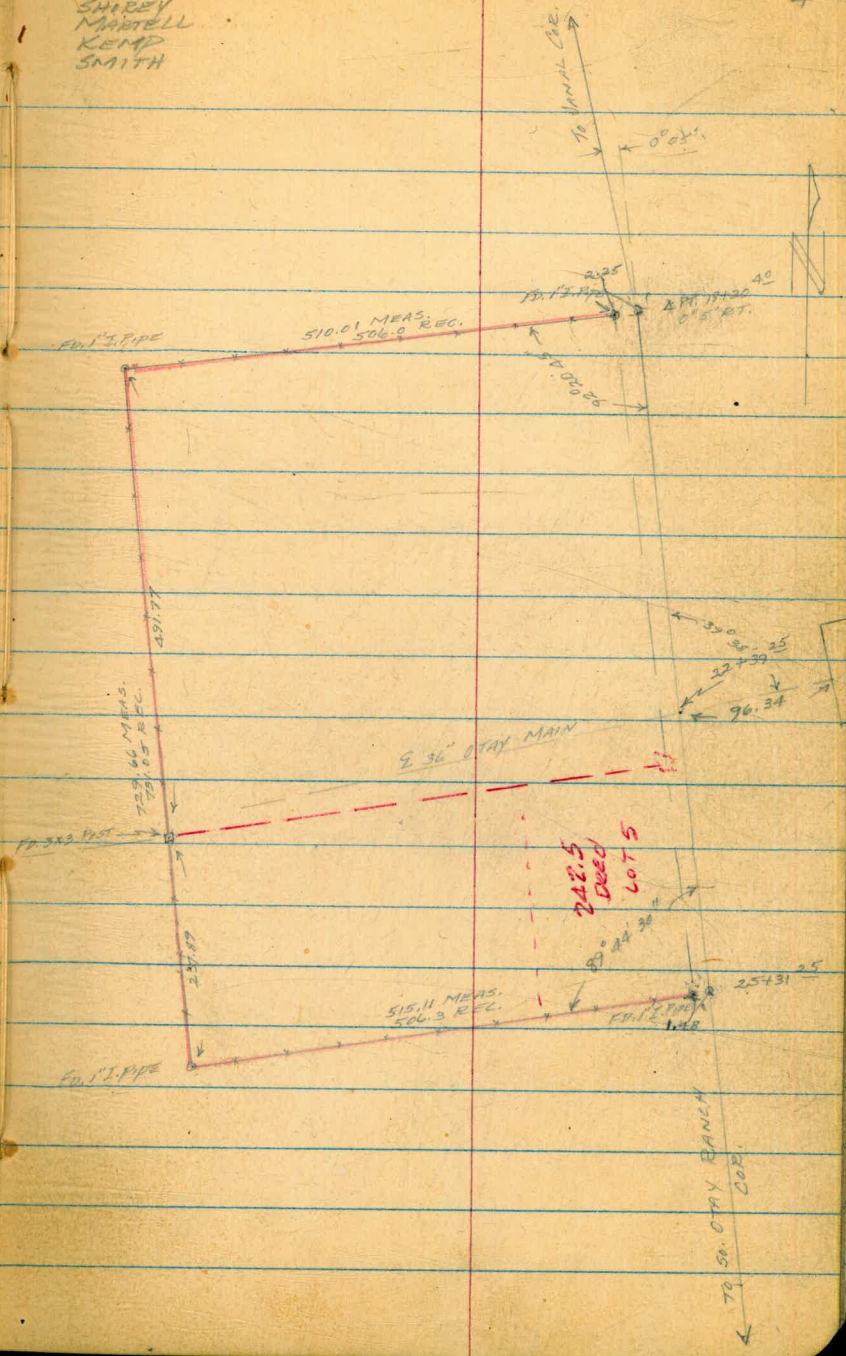
4/10/56  
 SHREY  
 MARTELL  
 KEMP  
 SMITH

- 0+00 = JANAL COR. # 2
- 0415 P.P. # 85942
- 3+70 P.P. # 85941
- { 8+96 NOR. EDGE CORR. GARAGE
- 9+12 So. " "
- 9+18 NOR. EDGE HOUSE
- 9+20 P.P. # 85940
- 9+48 So. EDGE HOUSE
- 9+70 P.P. # 88730
- { 9+97 NOR. EDGE HOUSE
- 10+22 So. " "
- { 10+22 NOR. EDGE CORR. GARAGE
- 10+43 So. " "
- { 10+71 NOR. EDGE HOUSE
- 10+76 So. " "
- { 11+03 NOR. WOODEN GARAGE
- 11+16 So. " "
- 11+19 P.P. # 85739
- { 11+30 NOR. EDGE CORR. GARAGE
- 11+47 So. " "
- { 11+50 NOR. EDGE HOUSE
- 11+80 So. " "
- { 11+79 NOR. EDGE WOODEN GARAGE
- 12+15 So. " "
- { 12+23 NOR. EDGE HOUSE
- 12+67 So. " "
- 12+70 P.P. # 88729
- { 13+03 NOR. EDGE HOUSE
- 13+49 So. " "
- { 13+49 NOR. EDGE CORR. BLDG.
- 13+77 So. " "
- { 13+99 NOR. EDGE HOUSE
- 14+15 So. " "
- 14+25 P.P. # 82607
- { 14+35 NOR. WATER TOWER & CORR. BLDG.
- 14+52 So. " "
- { 14+52 NOR. EDGE HOUSE
- 14+84 So. " "
- 17+23 P.P. # 82606
- 18+20<sup>40</sup> FD. 1" I. PIPE 2<sup>35</sup> RT.
- 19+53 P.P. # 82605
- 21+23 TP. # 605589 H
- 22+39<sup>25</sup> 6 36" OXY MAIN
- FROM FILTER PLANT
- 25+31<sup>25</sup> FD. 1" I. PIPE 1<sup>25</sup> RT.

10<sup>7</sup> LT

84<sup>7</sup> LT

84<sup>2</sup> LT

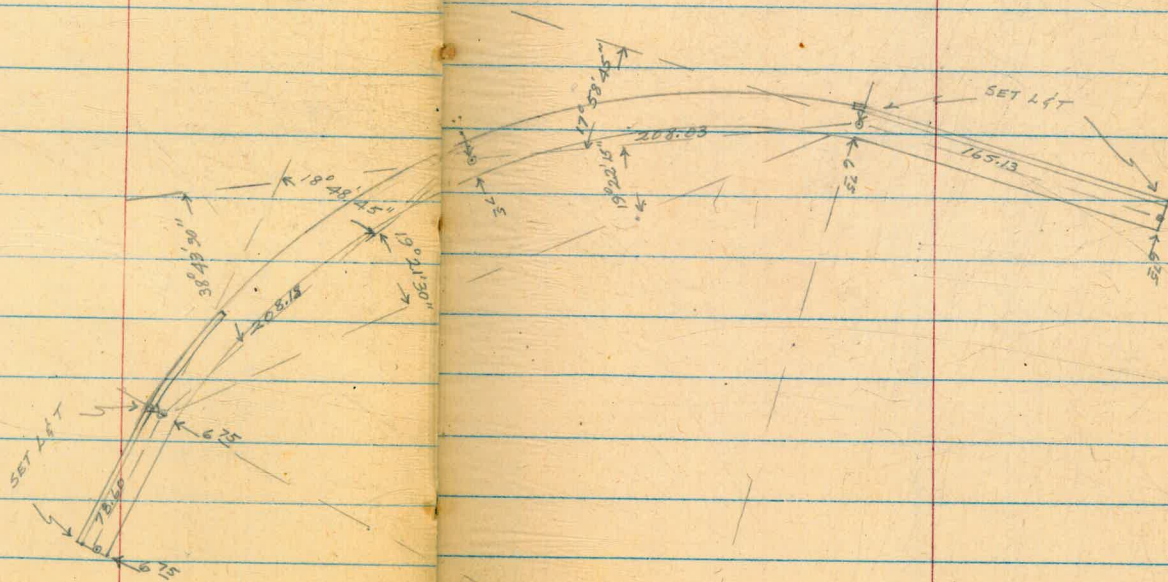




4/11/56  
SHARKEY  
KEMP  
MARTELL  
SMITH

5

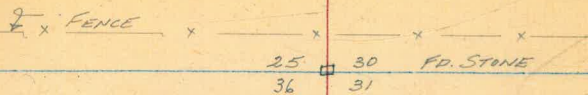
LOWER OTAY DAM





4/11/56

6



550.65

△ MIGUEL

1113.19

UPPER OTAY DAM



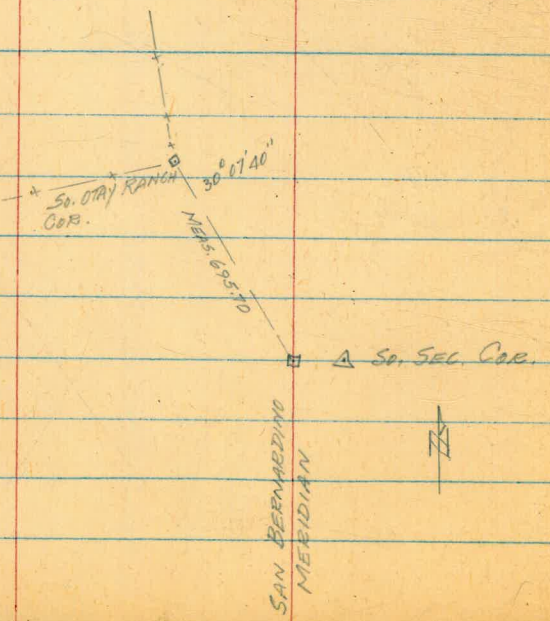
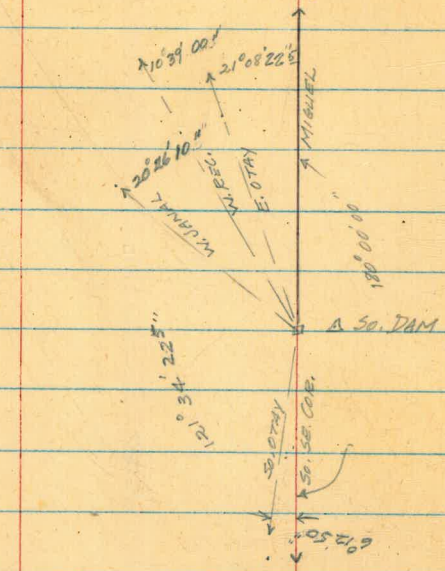
1287.71

120° 56' 17.5"

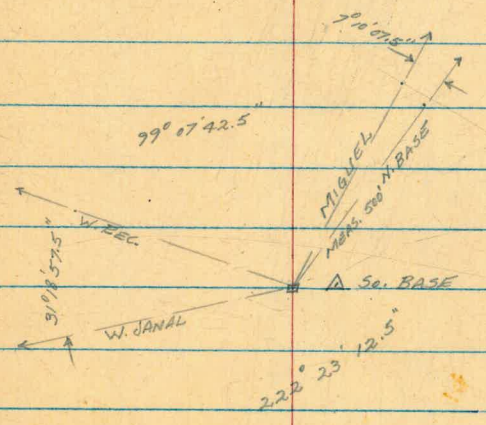
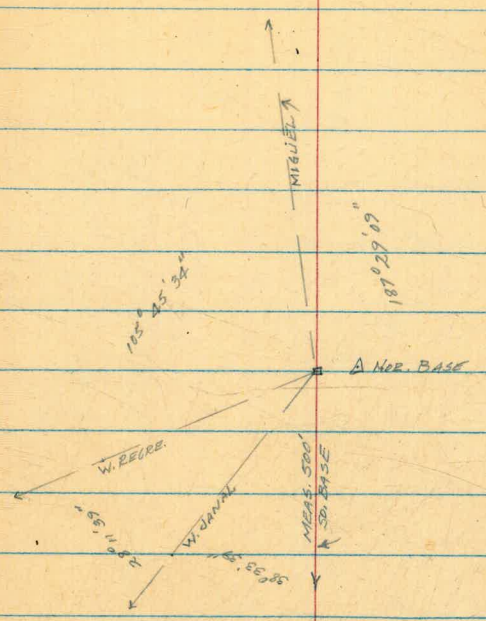
SAN BERNARDINO MERIDIAN



4/12/56  
 SHREY  
 KEMP  
 MARTELL  
 SMITH



SAN BERNARDINO  
 MERIDIAN



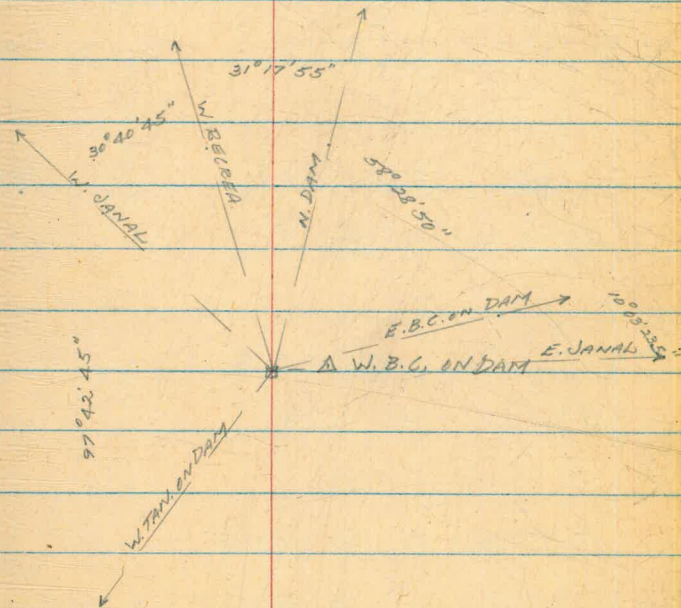
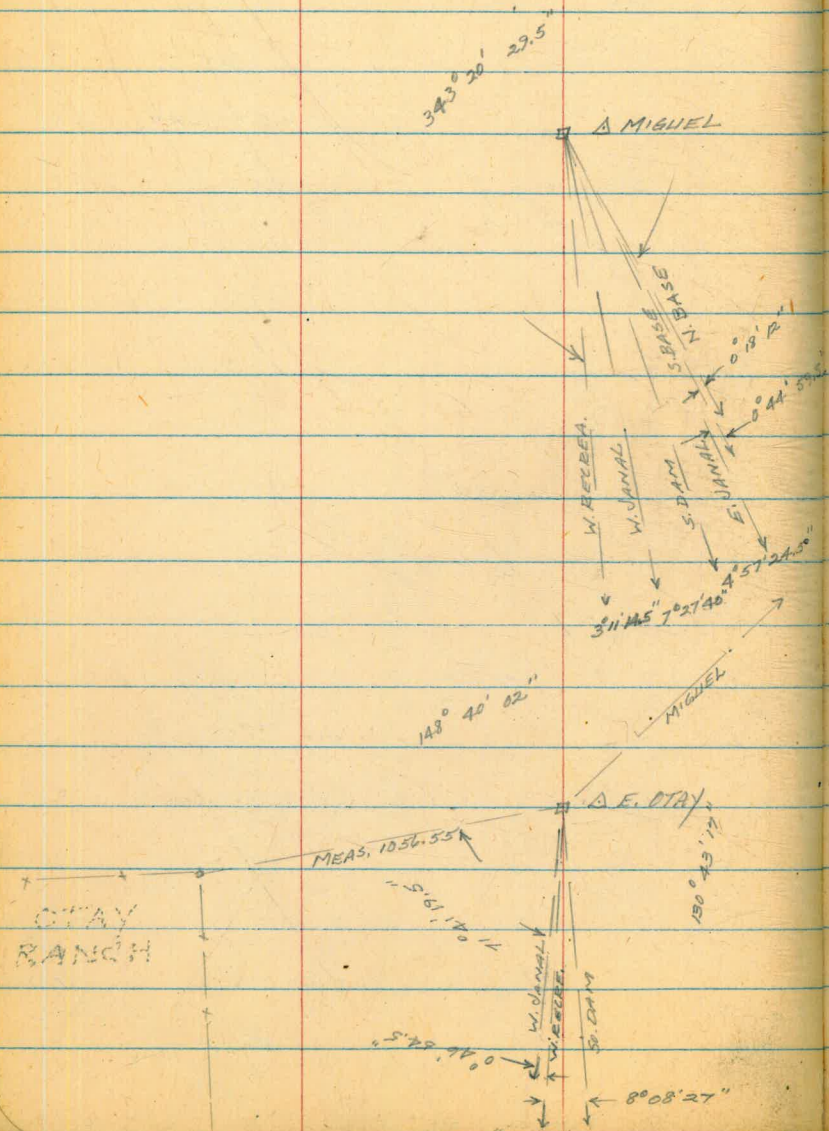






4/12/56  
SHIREY  
MARTELL  
KEMP  
SMITH

9.





TRIANGULATION  
AT  
OTAY RES. (Cont'd.)

T AT W. JANAL

NE Cor OTAY Ranch to W. RECREATION

1)  $8^{\circ}56'00''$  2)  $53^{\circ}34'00''$  M)  $8^{\circ}55'40''$

W. RECREATION To Lyons Peak Beacon

1)  $68^{\circ}13'30''$  2)  $409^{\circ}20'30''$  M)  $68^{\circ}13'25''$

W. RECR. to SAN MIGUEL Beacon

1)  $9^{\circ}08'30''$  2)  $54^{\circ}51'00''$  M)  $9^{\circ}08'30''$

Lyons Peak Beacon To OTAY PEAK Tower  
(300' Nly of Bldg)

1)  $43^{\circ}43'30''$  2)  $262^{\circ}21'$  M)  $43^{\circ}43'30''$

NE Cor Otay produced by to So DAM.

1)  $33^{\circ}02'00''$  2)  $198^{\circ}14''$  M)  $33^{\circ}02'20''$

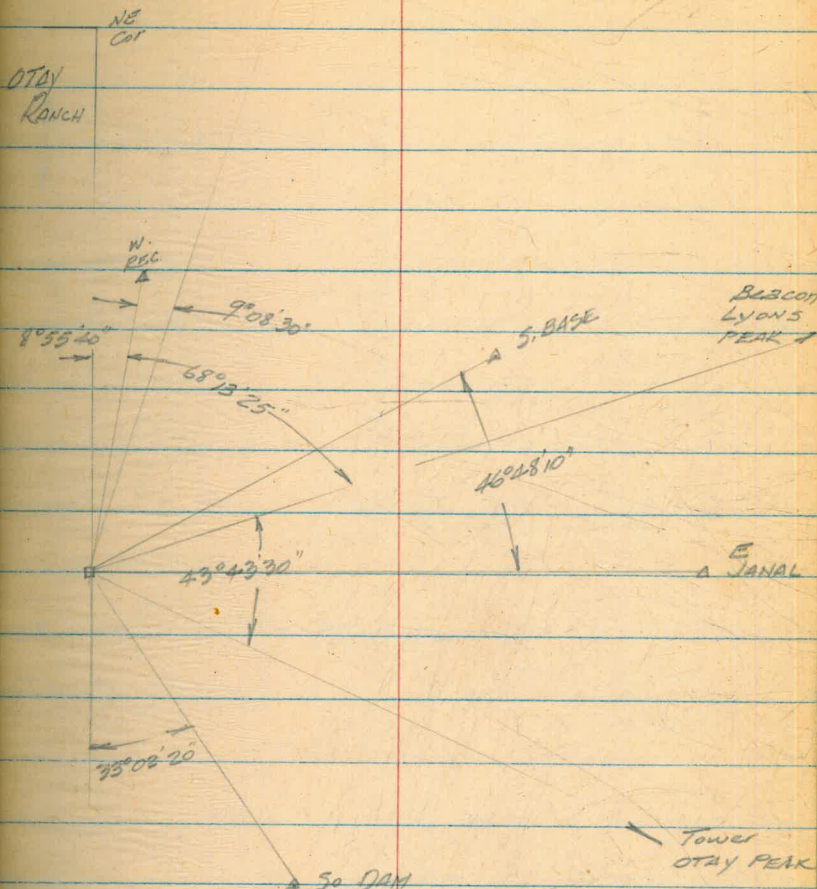
So. BASE to E. JANAL

1)  $46^{\circ}48'00''$  2)  $280^{\circ}49'00''$  M)  $46^{\circ}48'10''$

April 25 1956  
JEFFREY

Beacon  
SAN MIGUEL

10.

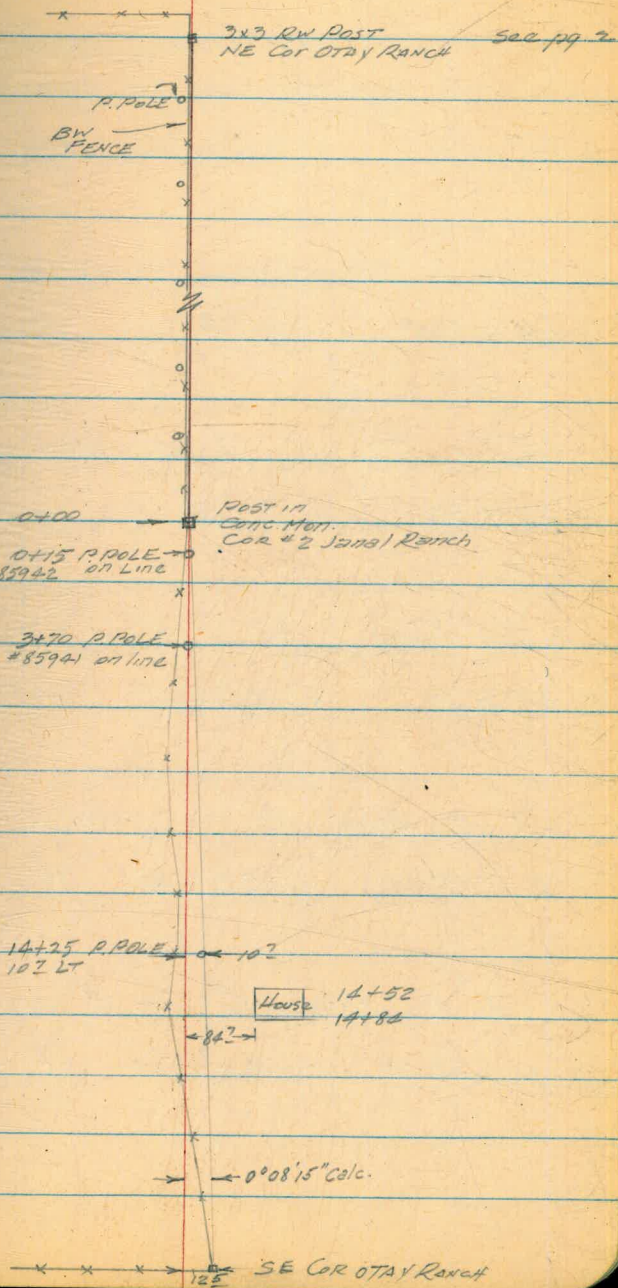




OTAY RES  
Cont'd

April 25-26 1956  
BEATTY  
SHREY.  
KEMP  
SMITH.

11





TRIANGULATION  
OTAY RES.

April 26 1956  
Beatty  
Smith

12

T AT W. RECREATION

BEACON SAN MIGUEL TO LYONS PEAK

1)  $60^{\circ}26'00''$  6)  $362^{\circ}35'30''$  M)  $60^{\circ}25'55''$

BEACON SAN MIGUEL TO TOWER OTAY MT.

1)  $106^{\circ}27'00''$  6)  $638^{\circ}40''$  M)  $106^{\circ}26'40''$   
<sup>278'40'</sup>

TOWER OTAY MT TO W. JANAL A

1)  $63^{\circ}38'30''$  6)  $381'50''$  M)  $63^{\circ}38'20''$

A So DAM TO A W. JANAL

1)  $21^{\circ}32'30''$  6)  $129^{\circ}14'00''$  M)  $21^{\circ}32'20''$  ✓

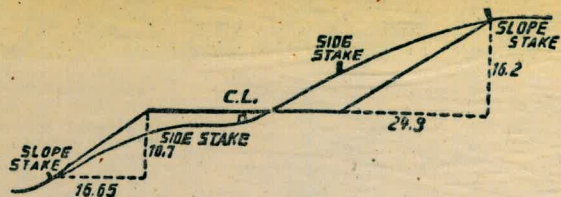
A E JANAL TO So DAM A

1)  $25^{\circ}35'30''$  6)  $153^{\circ}35'00''$  M)  $25^{\circ}35'50''$  ✓

A So BASE TO A E JANAL

1)  $47^{\circ}28'00''$  6)  $284^{\circ}45'00''$  M)  $47^{\circ}27'30''$





**DISTANCES FROM SIDE STAKES FOR CROSS-SECTIONING.**  
 SLOPE  $1\frac{1}{2}$  TO 1. ROADWAY OF ANY WIDTH.

	0	.1	.2	.3	.4	.5	.6	.7	.8	.9	
0	0.00	0.15	0.30	0.45	0.60	0.75	0.90	1.05	1.20	1.35	0
1	1.50	1.65	1.80	1.95	2.10	2.25	2.40	2.55	2.70	2.85	1
2	3.00	3.15	3.30	3.45	3.60	3.75	3.90	4.05	4.20	4.35	2
3	4.50	4.65	4.80	4.95	5.10	5.25	5.40	5.55	5.70	5.85	3
4	6.00	6.15	6.30	6.45	6.60	6.75	6.90	7.05	7.20	7.35	4
5	7.50	7.65	7.80	7.95	8.10	8.25	8.40	8.55	8.70	8.85	5
6	9.00	9.15	9.30	9.45	9.60	9.75	9.90	10.05	10.20	10.35	6
7	10.50	10.65	10.80	10.95	11.10	11.25	11.40	11.55	11.70	11.85	7
8	12.00	12.15	12.30	12.45	12.60	12.75	12.90	13.05	13.20	13.35	8
9	13.50	13.65	13.80	13.95	14.10	14.25	14.40	14.55	14.70	14.85	9
10	15.00	15.15	15.30	15.45	15.60	15.75	15.90	16.05	16.20	16.35	10
11	16.50	16.65	16.80	16.95	17.10	17.25	17.40	17.55	17.70	17.85	11
12	18.00	18.15	18.30	18.45	18.60	18.75	18.90	19.05	19.20	19.35	12
13	19.50	19.65	19.80	19.95	20.10	20.25	20.40	20.55	20.70	20.85	13
14	21.00	21.15	21.30	21.45	21.60	21.75	21.90	22.05	22.20	22.35	14
15	22.50	22.65	22.80	22.95	23.10	23.25	23.40	23.55	23.70	23.85	15
16	24.00	24.15	24.30	24.45	24.60	24.75	24.90	25.05	25.20	25.35	16
17	25.50	25.65	25.80	25.95	26.10	26.25	26.40	26.55	26.70	26.85	17
18	27.00	27.15	27.30	27.45	27.60	27.75	27.90	28.05	28.20	28.35	18
19	28.50	28.65	28.80	28.95	29.10	29.25	29.40	29.55	29.70	29.85	19
20	30.00	30.15	30.30	30.45	30.60	30.75	30.90	31.05	31.20	31.35	20
21	31.50	31.65	31.80	31.95	32.10	32.25	32.40	32.55	32.70	32.85	21
22	33.00	33.15	33.30	33.45	33.60	33.75	33.90	34.05	34.20	34.35	22
23	34.50	34.65	34.80	34.95	35.10	35.25	35.40	35.55	35.70	35.85	23
24	36.00	36.15	36.30	36.45	36.60	36.75	36.90	37.05	37.20	37.35	24
25	37.50	37.65	37.80	37.95	38.10	38.25	38.40	38.55	38.70	38.85	25
26	39.00	39.15	39.30	39.45	39.60	39.75	39.90	40.05	40.20	40.35	26
27	40.50	40.65	40.80	40.95	41.10	41.25	41.40	41.55	41.70	41.85	27
28	42.00	42.15	42.30	42.45	42.60	42.75	42.90	43.05	43.20	43.35	28
29	43.50	43.65	43.80	43.95	44.10	44.25	44.40	44.55	44.70	44.85	29
30	45.00	45.15	45.30	45.45	45.60	45.75	45.90	46.05	46.20	46.35	30
31	46.50	46.65	46.80	46.95	47.10	47.25	47.40	47.55	47.70	47.85	31
32	48.00	48.15	48.30	48.45	48.60	48.75	48.90	49.05	49.20	49.35	32
33	49.50	49.65	49.80	49.95	50.10	50.25	50.40	50.55	50.70	50.85	33
34	51.00	51.15	51.30	51.45	51.60	51.75	51.90	52.05	52.20	52.35	34
35	52.50	52.65	52.80	52.95	53.10	53.25	53.40	53.55	53.70	53.85	35
36	54.00	54.15	54.30	54.45	54.60	54.75	54.90	55.05	55.20	55.35	36
37	55.50	55.65	55.80	55.95	56.10	56.25	56.40	56.55	56.70	56.85	37
38	57.00	57.15	57.30	57.45	57.60	57.75	57.90	58.05	58.20	58.35	38
39	58.50	58.65	58.80	58.95	59.10	59.25	59.40	59.55	59.70	59.85	39
40	60.00	60.15	60.30	60.45	60.60	60.75	60.90	61.05	61.20	61.35	40
41	61.50	61.65	61.80	61.95	62.10	62.25	62.40	62.55	62.70	62.85	41
42	63.00	63.15	63.30	63.45	63.60	63.75	63.90	64.05	64.20	64.35	42
43	64.50	64.65	64.80	64.95	65.10	65.25	65.40	65.55	65.70	65.85	43
44	66.00	66.15	66.30	66.45	66.60	66.75	66.90	67.05	67.20	67.35	44
45	67.50	67.65	67.80	67.95	68.10	68.25	68.40	68.55	68.70	68.85	45
46	69.00	69.15	69.30	69.45	69.60	69.75	69.90	70.05	70.20	70.35	46
47	70.50	70.65	70.80	70.95	71.10	71.25	71.40	71.55	71.70	71.85	47
48	72.00	72.15	72.30	72.45	72.60	72.75	72.90	73.05	73.20	73.35	48
49	73.50	73.65	73.80	73.95	74.10	74.25	74.40	74.55	74.70	74.85	49
50	75.00	75.15	75.30	75.45	75.60	75.75	75.90	76.05	76.20	76.35	50

THE NATIONAL BLANK BOOK COMPANY  
 HOLYOKE MASSACHUSETTS  
 NEW YORK CHICAGO BOSTON SAN FRANCISCO